

Behringer U-PHORIA UMC202HD/ UMC204HD Installation for Digitizer (Windows 7, 8 and 10)

Installing the Drivers for the UMC20xHD (Stereo users install 1 at a time)

- 1) Start the host PC.
- 2) Attach the supplied USB cable from the UMC20xHD into a free USB port on your PC
- 3) Windows will try and find the drivers for the UMC20xHD. Let the found new hardware wizard end and it will say no suitable drivers found.
- 4) Insert the Disc marked 'Behringer UMC Driver' disc and run the 'BEHRINGER_UMC_XXXXX setup' file from inside the 'Windows 7, 8 and 10' folder.
- 5) Follow the onscreen instructions to install the drivers. After this Windows will find the hardware again and finish installing. Stereo users should now connect the other UMC20xHD and windows will install the drivers automatically.

Setting the sample rate to 192khz

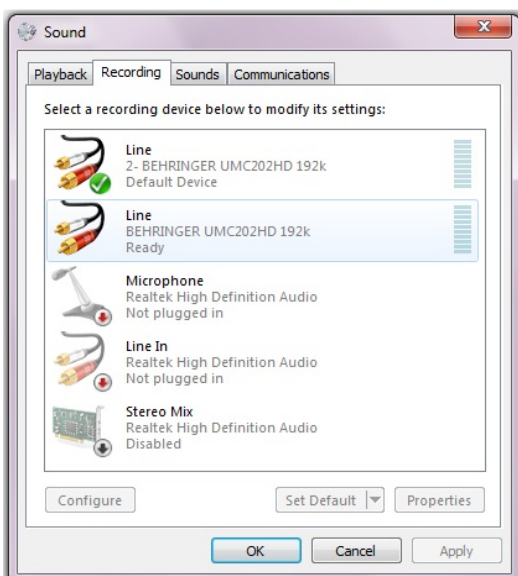
In order for the Digitizer to record the audio at the highest resolution, the sample rate for the UMC20xHD's has to be set to 192Khz in the Windows sound settings. Here's how to find the sample rate settings menu:

Windows 8 and 10

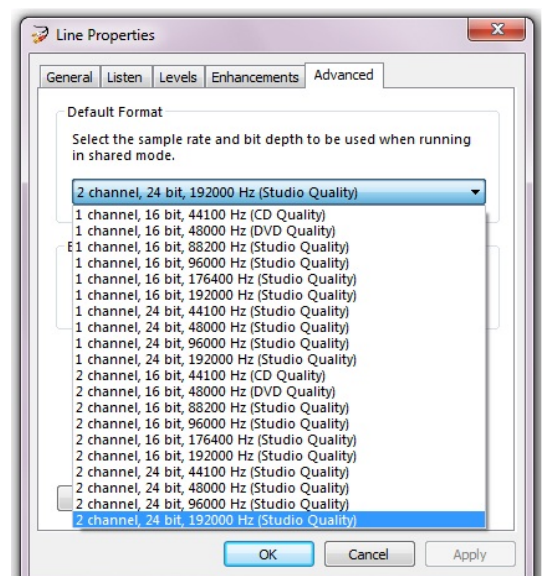
From the settings menu, select 'System'. Click on 'Sound' in the column on the left. On the right hand side at the top of this windows there is a link to 'Sound control panel' under 'Related settings'. This will bring up the window shown below:

Windows 7

Navigate to the Windows 'Control Panel'. Change the 'view by' setting in the top left of the window from 'Category' to 'Large icons'. Click on the 'Sound' link and this will bring up the following window:



Select the 'Recording' tab at the top. A double click on the 'BEHRINGER UMC 20xHD 192k' will bring up the 'Properties' window. Click on the 'Advanced' tab and select the sample rate of '2 channel, 24 bit, 192000 Hz, (Studio quality)'. Click 'Apply' then 'OK' and close both windows. Stereo users repeat for the other sound card too.



USB to Serial Cable Installation

If your Laptop/Tower PC does not have a serial (RS232) port you need to use the RS232 to USB adaptor (supplied). To install...

- 1) Start the host computer system and insert the CD marked 'USB to serial driver' into the CD/DVD drive on your PC.
- 2) Browse to the CDRom folder D:\USB Serial Adapter\Windows\
- 3) Select the appropriate folder for your operating system and Double click on the icon PL2303_Prolific_DriverInstaller
- 4) Follow the on-screen instructions to install the driver. Plug in the USB to serial adaptor, Windows will apply the drivers automatically.
- 5) Check in the Windows device manager, under ports (COM & LPT) you should see Prolific USB to serial COM port(COM??) The COM port that is emulated by the USB to serial adaptor is displayed in the brackets.

Connecting the Digitizer to the PC and UMC20xHD

Using the supplied multi cable,

- 1) Connect the 15 pin D-type connector to the back of the Digitizer.
- 2) Connect the smaller 9 pin D-type connector to the serial port of the PC or the USB to serial adaptor.
- 3) Connect the 'A' side jack plug to 'Input 1' and the 'B' side jack plug to 'Input 2' of the UMC20xHD.
Stereo users connect the 'AL' jack plug to 'Input 1' and 'AR' jack plug to 'Input 2' of one of the UMC20xHD's. Leave the 'B' side jacks unplugged at this moment.

Mono Configuration



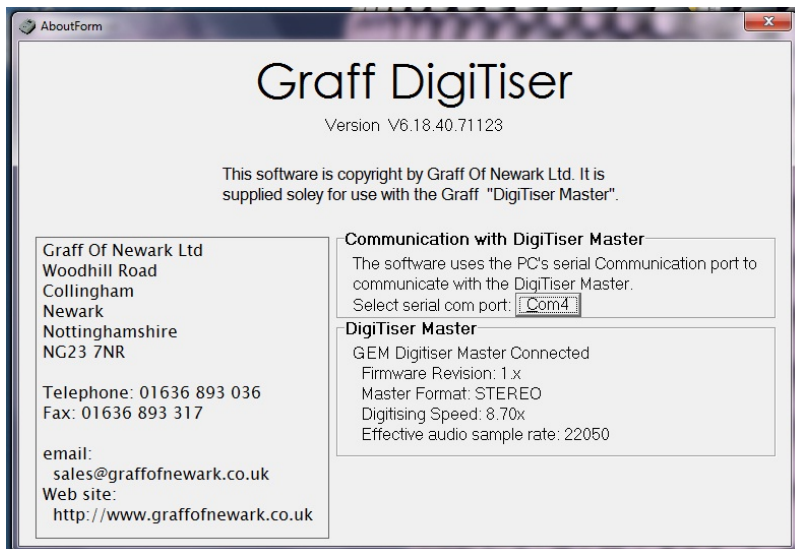
Stereo Configuration



The gain controls on the front of the UMC20xHD can be used to give a little extra level if required but ensure the level meters in the Graff software do not hit the top otherwise distortion will be introduced.

First run with the Digitizer

After installing the Graff Digitizer software from the 'Digitizer 6.--' CD, you can run the program from the shortcut icon created on the desktop. When the software runs for the first time it needs to find the Digitizer com port and assign the sound cards. This is done by clicking on the 'About' link at the top of the window.



From here you can select the com port that the Digitizer is using. Select each one in turn until you see the information about the Digitizer displayed in the box below the com port selector. The sound cards will be automatically assigned on exit from this page. Mono users are now set up and ready to go.

For a stereo system, the software assigns one sound card per side but we need to establish which sound card is being used for which side:

For the stereo Digitizer, Digitize a tape and see if the A side level meters show. If they show then plug the B side jacks into the other UMC20xHD. If the B side meters show, then swap the A side jacks into the other UMC20xHD and put the B side jacks into the first UMC20xHD.