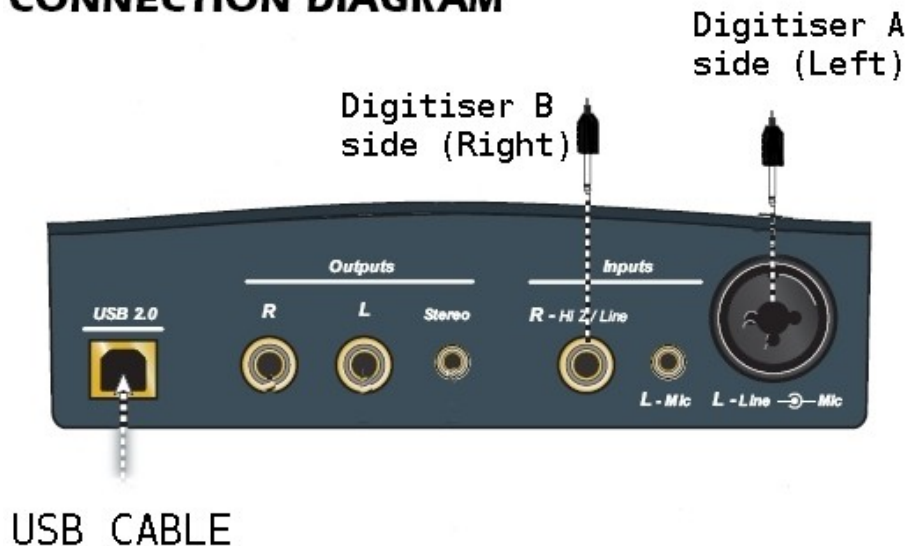


E-MU 0204 - Install for Digitiser (Windows XP, Vista and Windows 7)

- 1) Start up the host PC.
- 2) Plug the USB cable supplied with the E-MU 0204 into the USB connector on the back of the E-MU 0204 audio interface. (Stereo users: only connect one of the E-MU 0204 interfaces at this time).
- 3) Plug the other end of the cable into an unused USB 2 port on your laptop/tower PC.
- 4) Turn on the E-MU 0204 audio interface by rotating the level control at the far right of the unit clockwise. The power light on the unit should illuminate. On the computer screen a found new hardware wizard should appear – click on cancel to cancel the wizard.
- 5) Insert the E-MU 0204 Software/Manual installation CD-ROM CD/DVD drive from the E-MU Installation kit.
- 6) The software should install automatically, if it does not, open "My Computer" and double click on the CD item marked E-MU. User access control will ask whether you want to install the program. Click on allow.
- 7) Follow the on-screen instructions – when prompted to select installation type, select Full Installation. When installation is complete, click 'finish' and allow the computer to re-start. Stereo users connect and turn on the second E-MU 0204 interface (when the reboot has completed), the drivers will install automatically.

CONNECTION DIAGRAM



USB to Serial Cable Installation

If your Laptop/Tower PC does not have a serial (RS232) port you need to use the RS232 to USB adaptor (supplied). To install...

- 1) Start the host computer system and insert the CD marked 'Graff Digitiser 6.** CD-ROM' into the CD/DVD drive on your PC.
- 2) Browse to the CDRom folder D:\USB Serial Adapter\Windows\
- 3) Select the appropriate folder for your operating system and Double click on the icon PL2303_Prolific_DriverInstaller
- 4) Follow the on-screen instructions to install the driver.

Plug in the USB to serial adaptor, Windows will apply the drivers automatically.

Check in the Windows device manager, under ports (COM & LPT) you should see Prolific USB to serial COM port (COM??) The COM port that is emulated by the USB to serial adaptor is displayed in the brackets.

Digitiser cable connection

Connect the 15-way D type connector to the rear connector on the Digitiser.

Connect the 9-way D type connector to the RS232 to Serial adaptor 9-pin D type connector.

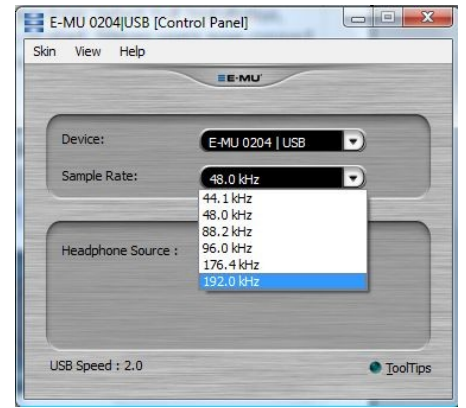
Connect the audio leads (jack plugs) to the connectors on the rear of the E-MU 0204 as shown above.

Note: On stereo Digitisers, connect the 'A L' and 'A R' cables to one of the sound cards only at this time.

Using The Digitiser/E-MU 0204

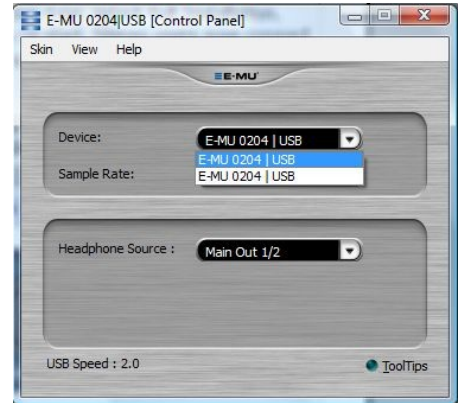
The E-MU 0204 may start up with the sample rate set to 48000 samples/second. Before the Digitiser can be used, this must be set to 192.0kHz in the E-MU control panel.

If you attempt to use the Digitiser with the sound card set to the wrong sample rate, the Digitiser software may show the message "Undefined External Error". If the error does not occur, the audio will be very poor quality and lacking high frequencies.



Stereo Digitiser Users:

When using a stereo Digitiser, ensure that both cards are set to 192kHz, the devices can be selected as shown.



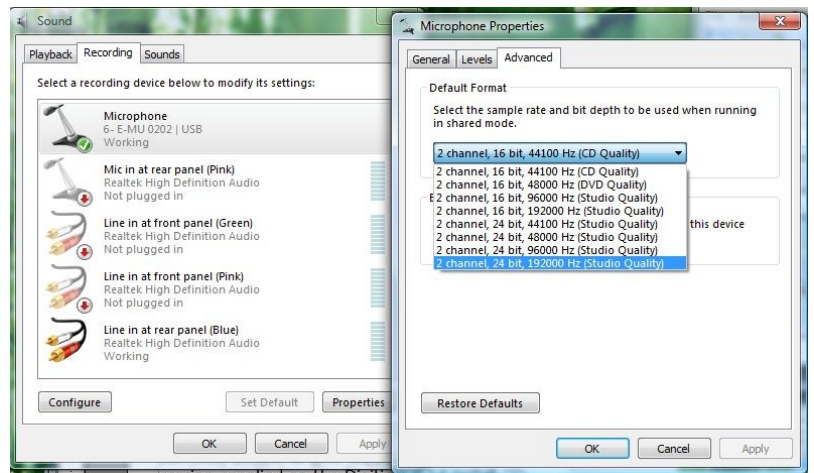
Set Windows Sample rate

(Windows Vista only)

Click on start menu and browse to Control panel – Sound, Click on the 'Recording' tab, select the E-MU0204 Microphone icon and click on 'Properties'.

In the properties window, click on the 'Advanced' tab. Select the default format as 2 Channel, 24 bit, 192000Hz (Studio Quality)

Stereo Digitiser Users - ensure that both sound cards are set to this value.



Set Audio Level (Important)

In the Sound card properties, set the level to 3 for Windows 7, and 23 for Windows Vista.

This should give a standard line level for the Digitiser. It may be necessary to adjust this level control to compensate for poor levels on cassette.

The Audio input level controls on the front of the E-MU 0204 USB interface should always be set to zero.

Please note: It is not necessary for the Digitiser sound card to be the default.

