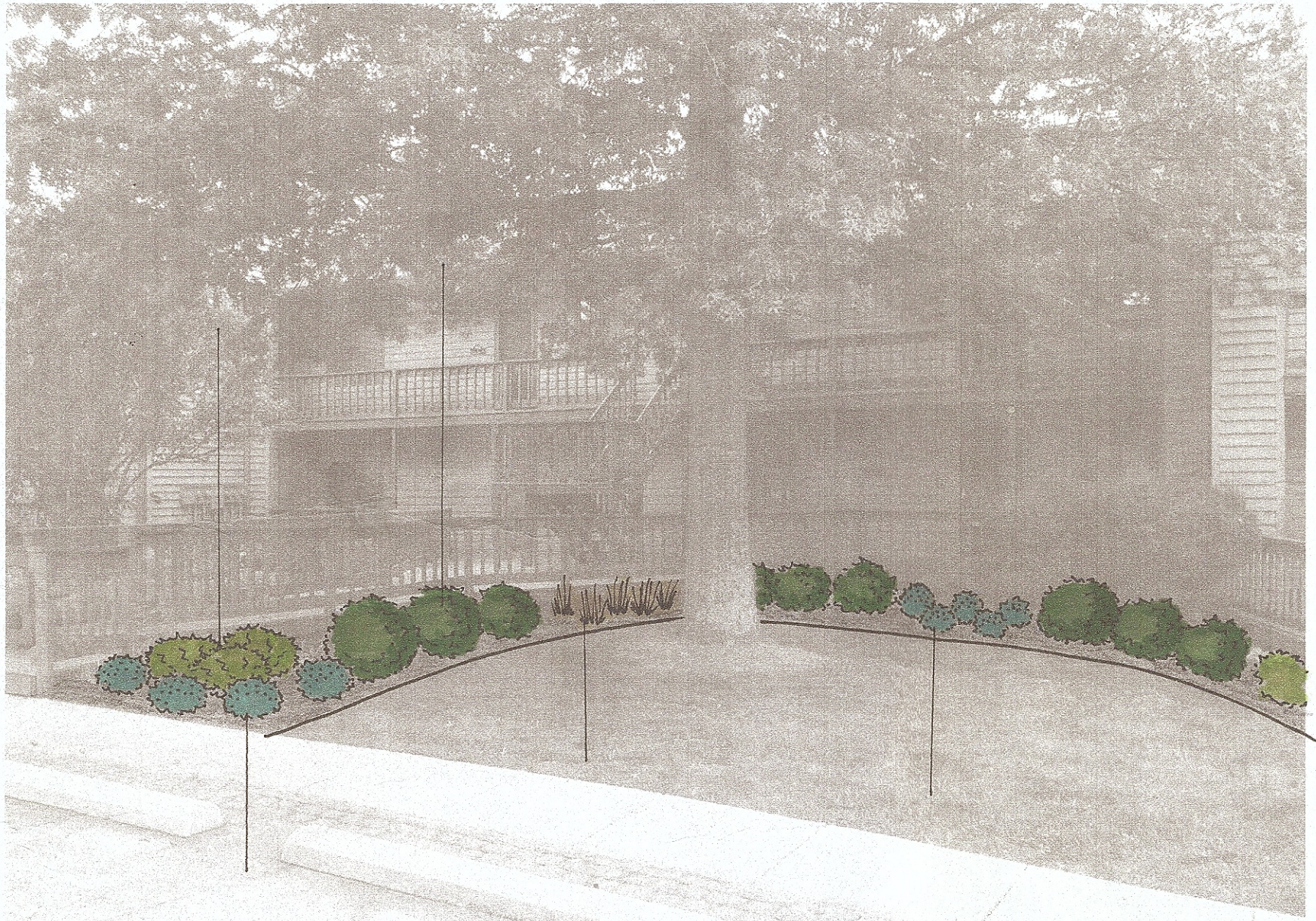


Waters Edge

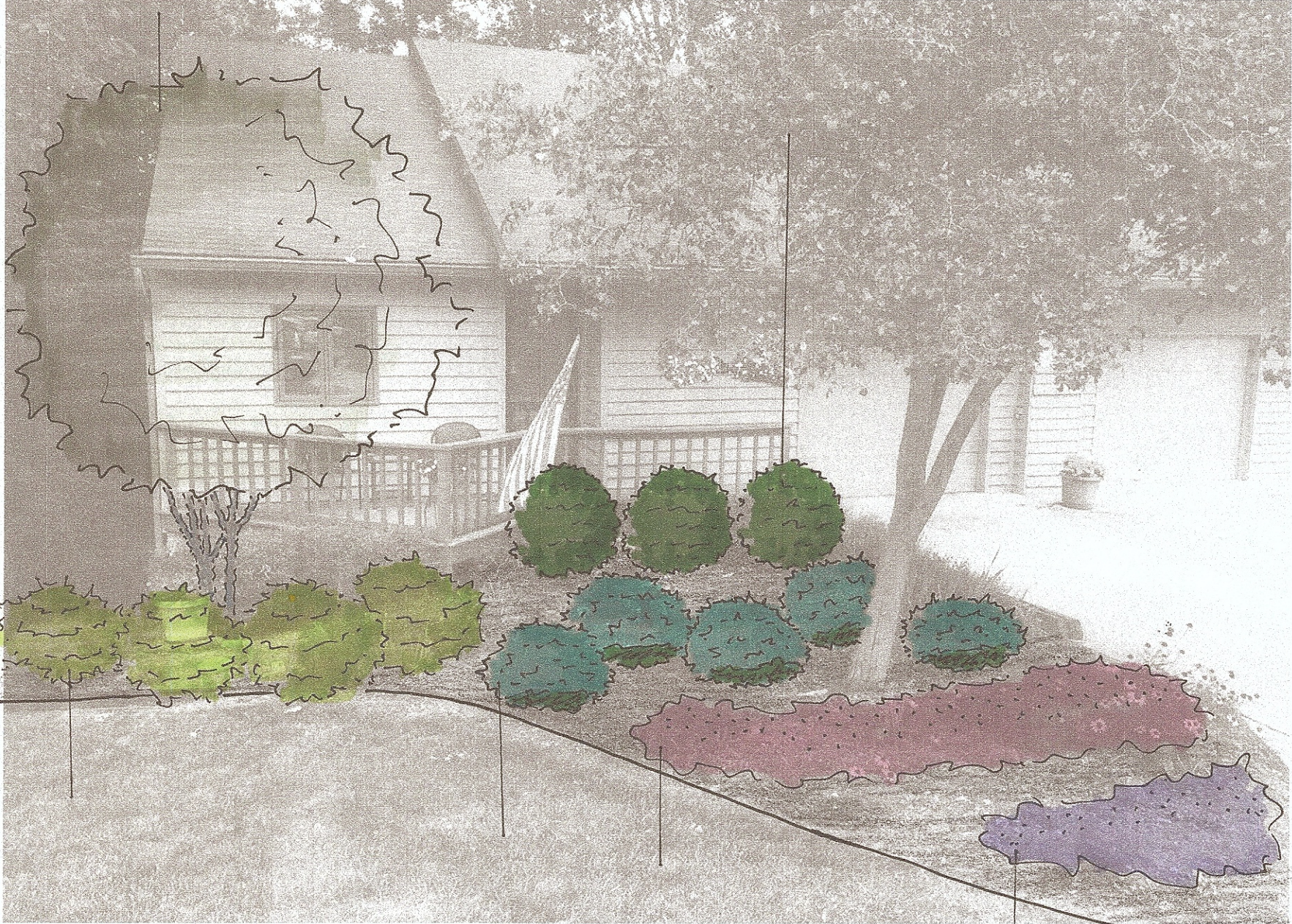
Eagle Pointe Bloomington, IN

Perspective A Unit Example



This image illustrates an example of a typical unit design layout. I chose this image because I saw this bed layout on multiple units. Trying to keep maintenance in mind I chose a simple layout, adding color and texture. Since this area is mostly shaded from the large tree in the center these plants will need to be shade tolerant.

Perspective B Unit Example



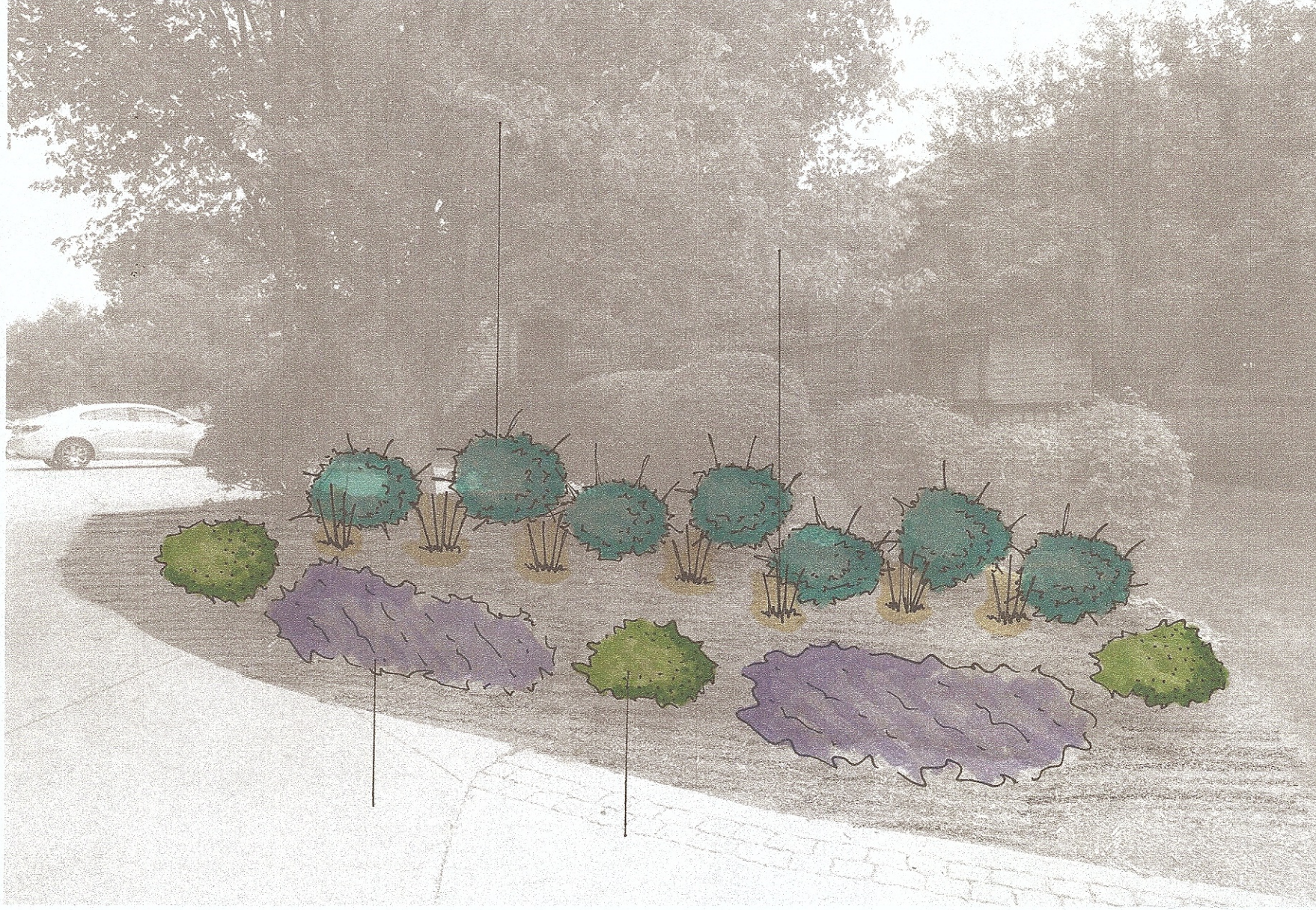
This image illustrates a planting design for a unique unit landscape. Throughout the community there are many different front yards that will need to be addressed individually. We can still make the landscape cohesive by using similar plant materials and groupings of plants to make the area have a uniform style, without compromising the homeowners personal touch.

Plan View Recreation Area



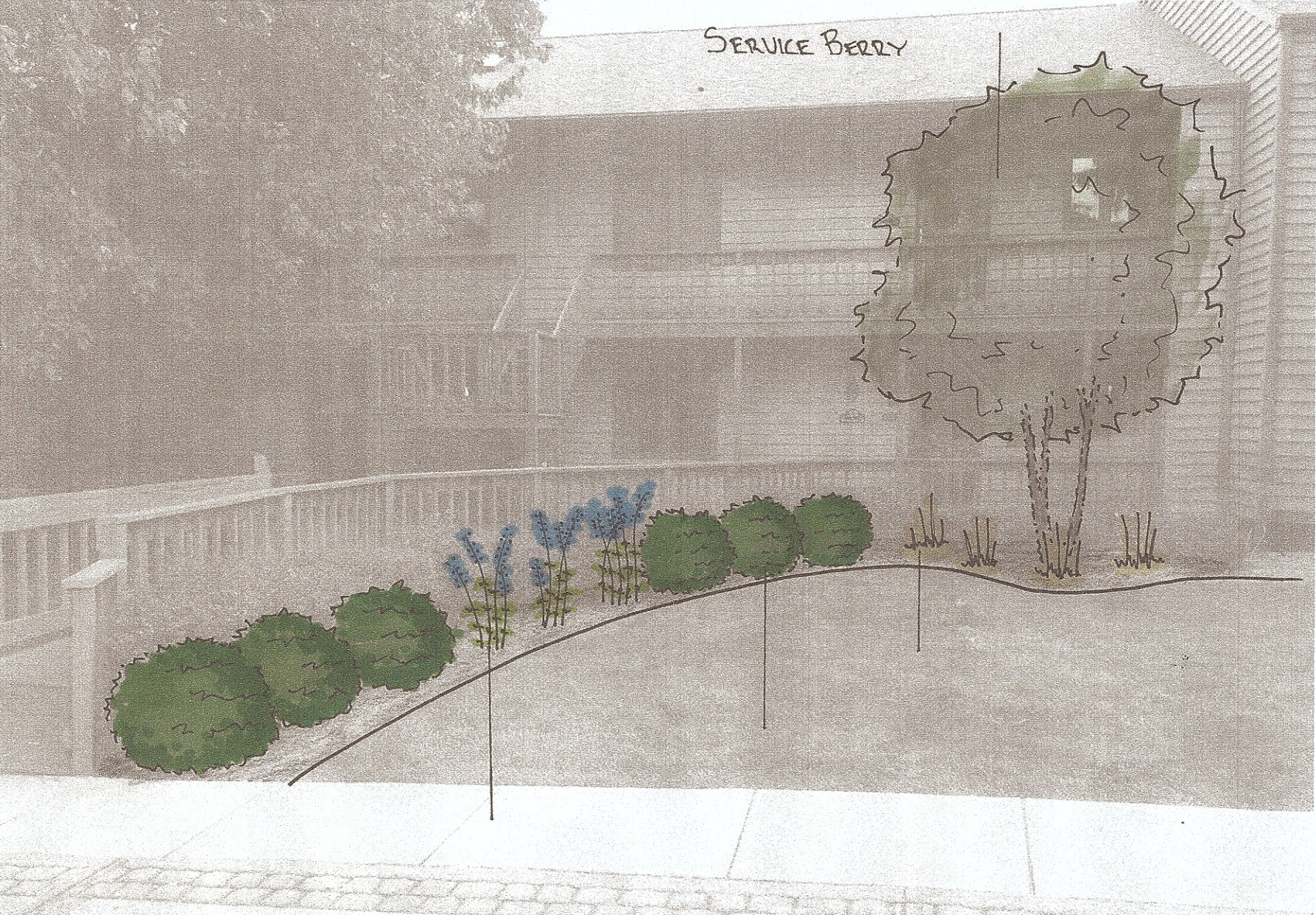
Above is a plan for the pool area in the community. New plant bed layouts will help add a new look to the area. Extending some of the beds will cut down on grass to mow around the fence and allow for more room for colorful plants around the pool. Plants will be determined on site.

Perspective C Corner Bed Example



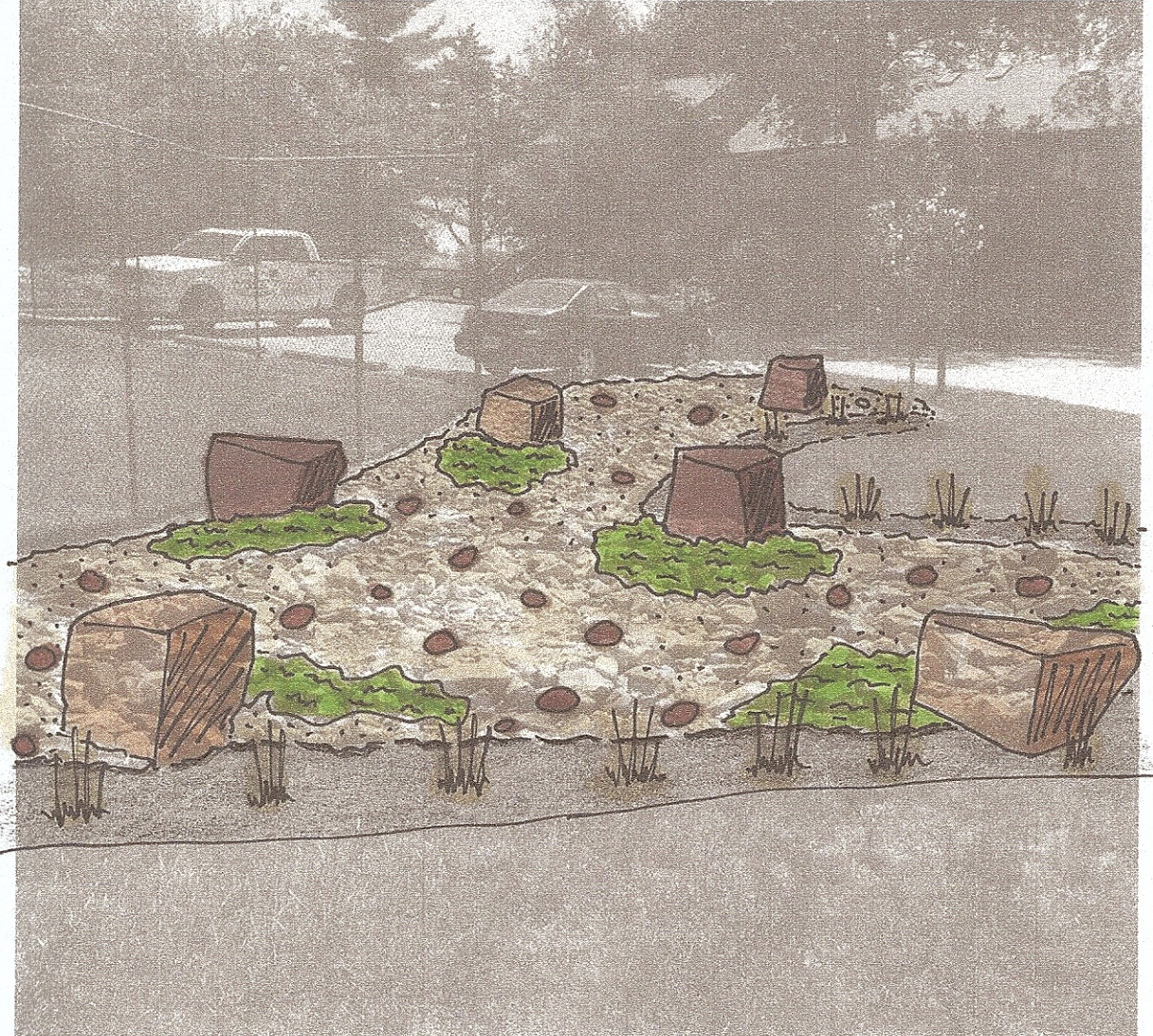
Throughout the property there are already established corner plots along the main road that are landscape beds. Most of these beds have shrubs and plants that are at their mature height and need to be removed and updated with new plants. Using simple arrangement of plants by their size and shape gives the area curb appeal that is aesthetically pleasing.

Perspective D Unit Example



This image illustrates an example of a typical unit design layout. I selected this image because I saw this bed layout on multiple units. Trying to keep maintenance in mind I chose a simple layout featuring color and texture.

Perspective E



Some of the drainage areas throughout the property can be viewed as an eye sore. To help soften this look we are proposing the addition large, naturally weathered, boulders to the middle and edge to give the area some height and depth. We suggest to top dressing the rip rap with river gravel to help mask the unsightliness. Also, adding some small patches of ground cover to provide interest and color. This will not effect any storm water management these areas produce.

Perspective F Entrance



This image illustrates the front entrance with the new sign design. I incorporated a rock bubbler water feature to help draw attraction to the space. A row of Blue Atlas Cedars is proposed for the back ground to provide unique color and texture. Replacing the retaining block wall with natural stone boulders will give the space a more natural look. Edging the bed in river gravel will help tie the bubbler in with the landscape.