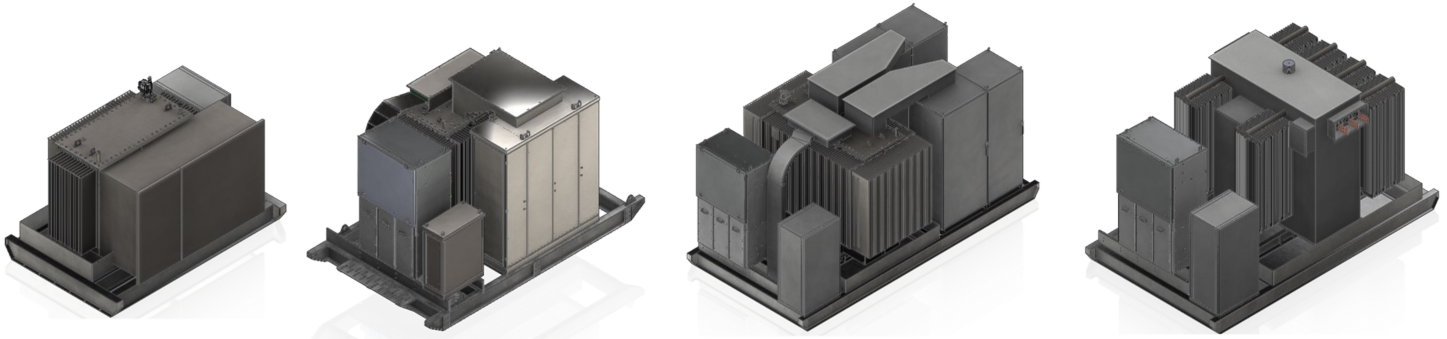




M2L Industria de Equipamentos Elétricos Ltda
 Rua Luiz Albino de Oliveira, 52
 Bairro dos Pessegueiros
 Extrema/MG
 CEP 37.630-000

Digital Power Stations for Solar PV



M2L-1SP

M2L-1S

M2L-2S

M2L-2C

Model	Inverter		kVA (30C)	V		LV Qty	Hz	Z (%)	Losses (W)		Dimensions (mm)			Weight (kg)
	Type	Qty		MV	LV				No Load	Load	Length	Width	Height	
M2L-1SP	String	up to 12	500	up to 23.000	up to 1000	1	50 or 60	6	1,200	3,800	1,800	1,300	1,800	2,400
			1000						1,800	8,200	2,200	1,600	1,900	3,400
			2500						3,500	21,500	2,600	2,000	2,100	5,600
M2L-1S	String	up to 18	2500	up to 34.500	up to 1000	1	50 or 60	7	3,200	21,800	4,000	2,300	2,300	6,700
			3000						3,400	25,600	4,100	2,300	2,300	7,800
			3500						4,000	31,000	4,200	2,400	2,400	8,400
			4000						4,500	39,500	4,250	2,450	2,450	9,100
			4500						4,800	40,200	4,300	2,500	2,500	9,800
M2L-2S	String	up to 36	5000	up to 34.500	up to 1000	2	50 or 60	7	5,000	45,000	4,200	2,500	2,700	11,800
			5500						5,500	49,500	4,250	2,550	2,700	12,400
			6000						6,000	54,000	4,300	2,550	2,750	13,000
			6500						6,500	58,500	4,400	2,550	2,750	13,700
			7000						7,000	63,000	4,400	2,600	2,800	14,300
M2L-2C	Central	2	5000	up to 34.500	up to 1000	2	50 or 60	7	5,000	45,000	4,100	2,500	2,750	11,600
			5500						5,500	49,500	4,100	2,550	2,750	12,300
			6000						6,000	54,000	4,200	2,550	2,800	12,900
			6500						6,500	58,500	4,200	2,600	2,800	13,500
			7000						7,000	63,000	4,300	2,600	2,850	14,000
			7500						7,500	67,500	4,300	2,600	2,850	14,500

TRANSFORMER

- Standards: IEC/ANSI/NBR applicable to DPV Power Generation systems
- Hermetically Sealed Liquid Filled or Sealed w/ Nitrogen Chamber
- No Load Tap Changer (NLTC) or Automatic Voltage Regulation (OLTC) under request.
- Electrostatic Shield MV/LV
- Mineral Oil or Natural Ester Fluid
- MV Plug-in Load break / Dead brake Epoxy bushings incl. Surge Arresters
- MV/LV Bushing Protection Chamber
- Temperature, Pressure, Level and Gas Acc. Indication, with alarm and trip signals).

LV SWITCHGEAR (M2L-1S and M2L-2S)

- Main ACB Circuit Breakers for LV winding
- MCCB Circuit Breakers for each String Input
- DPS Surge Protection & Fuses
- IP-55 Protection Degree.
- Terminal Blocks for String Input Cables.

MV SWITCHGEAR

- RMU Outdoor, super-compact Disconnector + Vacuum CB combined unit, tested according to IEC 62271 standards.
- Up to 40,5 kV, 630 A, 25kA 3s.
- No Current Derating up to 55°C
- IAC 25kA 1s A-FLR, Internal Arc Proof, Front-Lateral-Rear, Class A included cables box compartment.
- IP-55 Protection Degree.
- Protection Relay w/ 50, 51, 50N and 59 functions
- Configuration: Line Switch/Line Feeder CB/Line Switch or Line Switch/Line Feeder CB

GENERAL

- Skid: mechanical platform that supports the weight of all the equipment, also used as pass-way for cabling and air flow,
- Oil spill containment and filter.
- C4 Corrosion Category
- Resistant to Earthquakes

M2L-1SP

- MV load-break Switch, Expulsion Bay-O-Net and Current-Limiting Backup Fuses incorporated in the Transformer
- MCCB Circuit-Breakers for String Input incorporated in the LV Compartment

SSAA CABINET

- Dry Type Auxiliary Transformer up to 50 kVA, LV/LV, Dyn11, class F insulation
- MCB Circuit Breakers for Auxiliary Functions
- IP-55 Protection Degree.
- Inverters Control & Communication
- UPS & Batteries on request

DIGITALIZATION

Remote Monitoring via Sensors, with Asset Management System, SW in cloud or server, with statistical analysis of performance, predictive analysis and maintenance centered on reliability (RCM), in order to guarantee the availability of the System.