

RATES Schooner Creek Resort, Inc.

27 Schooner Creek Rd.
Kimberling City, MO 65686

Phone: 417-739-4417

Fax: 417-739-1479

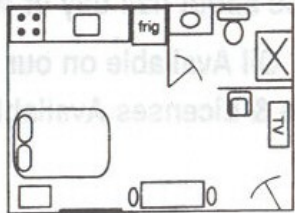
E-mail: prior@tri-lakes.net
www.schoonercreekresort.com

All units are **housekeeping** and have color cable TV, electric heat, air conditioning, furnished kitchens, coffee makers, microwaves, linens and towels. Fresh towels will be provided daily to your unit. Please bring your own towels for pool and dock.

EFFICIENCY

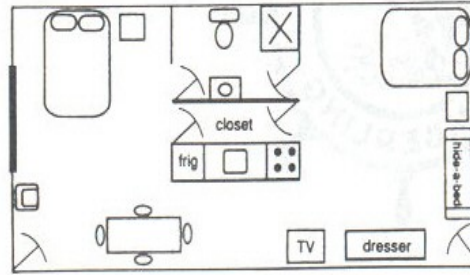
Unit 7 NO SMOKING NO PETS
Unit 8, 9 Smoking and Dog Friendly
Unit 10 NO SMOKING, Dog Friendly

- 1 Queen bed
- shower only
- sleeps 2
- lakeview



SEMI PRIVATE—2 bedroom kitchenette
Unit 6 Smoking and Dog Friendly
Unit 12 NO SMOKING NO PETS
Unit 12 - 1 king bed 1 queen bed (1st floor of 2-story)

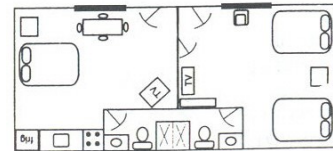
- 1 queen(#6) • 1 double(#6) • 1 twin hide-a-bed
- shower only • sleeps 4 • lakeview



DOUBLE UNIT KITCHENETTE (With Connecting Door)

Unit 4-5 Smoking and Dog Friendly

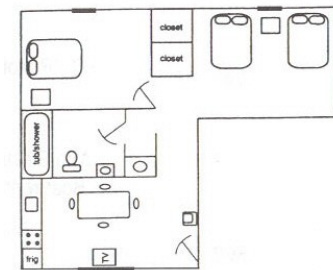
- 1 queen • 1 double • 1 hide-a-bed • 2 TVs 2 bathrooms/showers only • sleeps 4 • no lakeview



2 BEDROOM KITCHEN—(1st floor of 2-story)

Unit 11 Smoking and Dog Friendly

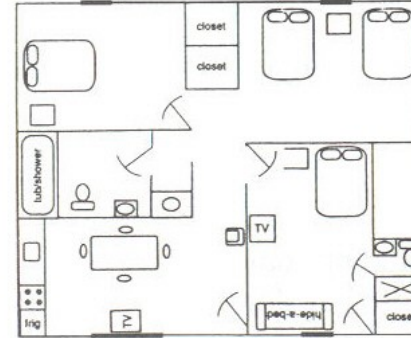
- 1 king bed • 2 double beds • full bath
- sleeps 6 • lakeview



3 BEDROOM KITCHEN—(2nd floor of 2-story)

Unit 15-16, 17-18 Smoking and Dog Friendly

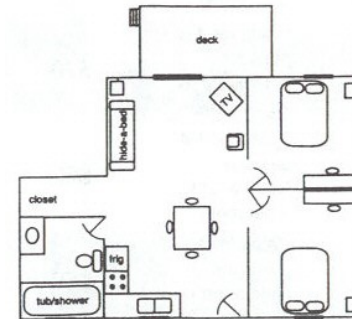
- 1 king bed • 3 double beds • 1 hide-a-bed
- 2 bathrooms • 2 TV's • sleeps 8 • lakeview



2 BEDROOM DUPLEX

Units 1C, 3C NO SMOKING NO PETS
Units 5C, 7C Smoking and Dog Friendly

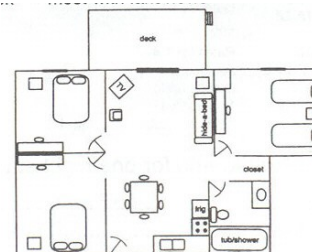
- 1 queen bed • 1 double bed • 1 hide-a-bed
- 1 full bath • kitchen/living room • deck
- sleeps 4 • most with lakeviews



3 BEDROOM DUPLEX

Units 2C, 4C, 6C, 8C—NO SMOKING NO PETS

- 1 queen bed • 1 double bed • 2 twin beds
- 1 hide-a-bed • kitchen/living room • deck
- 1 full bath • sleeps 6 • most with lakeviews

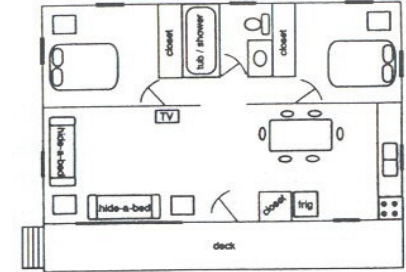


INDIVIDUAL 2 BEDROOM COTTAGE

Unit 21 NO SMOKING NO PETS

Unit 22 NO SMOKING, Dog Friendly

- 1 queen bed • 1 double bed • 2 hide-a-beds
 - deck • kitchen/living room • full bath
 - sleeps 7 • central heat & air • lakeview
- Unit 22* has 1 king bed, 1 queen bed

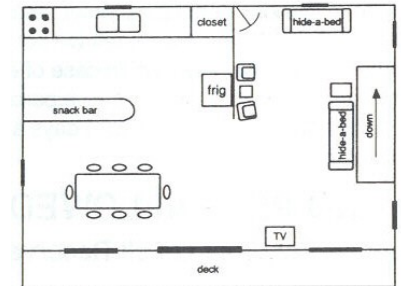


LARGE INDIVIDUAL COTTAGE—2 story house

Unit 19 NO SMOKING, Dog Friendly

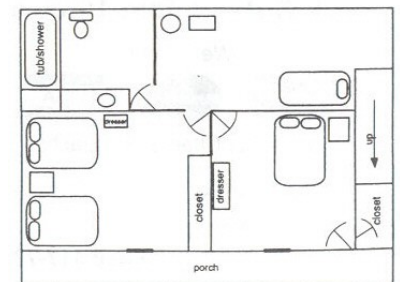
Unit 20 NO SMOKING NO PETS

- 1st floor—kitchen • living room • dining room
 - 2 hide-a-beds • deck • central heat & air
 - limited lakeview
- Unit 20 has 1 3/4 bath



Downstairs—2 bedrooms • 2 double beds • porch

- 1 twin bed • 1 king bed • full bath (#20 has 1 3/4 bath) • sleeps 9



OUR RESERVATION POLICY

Our Reservation Policy is intended to be fair to all of our guests. Once a guest reserves a unit and a partial prepayment is made, we remove that unit from the market, refusing all other requests for it. **You are responsible for all days reserved.**

A 40% prepayment is required on a 7 night reservation and a 50% prepayment is required on less than a 7 night stay at the time reservation is made. The remaining balance is due upon arrival.

Minimum 3 night stays are required for peak periods in some units. Rates are subject to change without notice.

We are not responsible for fishing conditions, weather conditions or personal emergencies including deaths. **Late arrivals and early departures will be charged for all days reserved.**

Add 10% additional charges to rate for one night stays.
7th Night Free but you must call to make your reservation because online booking will not handle it.

PETS ALLOWED UPON APPROVAL

In some units at \$20 minimum per night

Dogs under 30 lbs are allowed in some of our units. Dog must be crated when left alone and on a leash when on the grounds. You are responsible for any damages from the dog and clean up after the dog. Please email us at prior@tri-lakes.net or call us at 417-739-4417 for approval of a dog in a particular unit. Not all units are dog friendly.

**All reservations are due in full
upon arrival**

**Check In—After 3:00 p.m. or LATER
Check Out—Before 10:00 a.m.**

RESORT AMENITIES

- 25' x 50' Swimming Pool with large slide
- Picnic Tables/BBQ Grills
- Concrete Launch Ramp
- 26 Stall Lighted Boat Dock
- 10' x 24' Individual Boat Stalls
- Electrical outlets on each Boat Stalls
- Boat Trailer Parking
- 2 Fire Pits Located on grounds
- Playground
- Free Wireless Internet
- Daily Towel Service to Each Housekeeping Unit
- Fax Available
- Air Conditioning/Heat
- Basic Furnished Kitchens
- Microwaves, Toasters, Coffee Makers
- 14 cu ft Refrigerators or Larger
- Convenient to Grocery, Shopping and Restaurants
- Convenient to Port of Kimberling Marina for Boat Rentals
- Sales Tax Rate is 8.475%
- We DO NOT Charge Extra to Take Your Credit Card

Leon & Jody Prior
Owners & Your Hosts
Phone: 417-739-4417
E-Mail: prior@tri-lakes.net
Fax: 417-739-1479
www.SchoonerCreekResort.com

We accept at no additional charge



Personal Checks & Cash

SCHOONER CREEK RESORT RATE SHEET
417-739-4417

			----- Off Season-----		----- Mid Season -----		----- Peak Season ----	
			1/1 – 5/19 & 9/7 – 12/31		5/20 – 6/19 & 8/13 – 9/6		6/20 – 8/12	
Unit Description	B	Unit # D S	2-6 Nights**	7+ Nights	2-6 Nights**	7+ Nights	2-6 Nights**	7+ Nights
Boat Slip			12	10	15	13	18	15
Efficiency	2	7	55	47	68	58	79	68
Efficiency	2	8 D S	55	47	68	58	79	68
Efficiency	2	9 D S	55	47	68	58	79	68
Efficiency	2	10 D	55	47	68	58	79	68
Semi-Private	4	6 D S	75	64	94	81	110	94
Semi-Private	4	12	75	64	94	81	110	94
Double Kitchenette	4	4-5 D S	75	64	98	84	110	94
2Bedroom Kitchen	4	11 D S	80	69	104	89	119	102
2Bedroom Duplex	4	7C D S	88	75	114	98	149	128
2Bedroom Duplex	4	5C D S	88	75	114	98	149	128
2Bedroom Duplex	4	3C	88	75	114	98	149	128
2Bedroom Duplex	4	1C	88	75	114	98	149	128
Sm Individual Cott	4	22 D	108	93	139	119	169	145
Sm Individual Cott	4	21	124	106	159	136	179	153
3Bedroom Kitchen	4	15-16 D S	100	86	129	111	155	133
3Bedroom Kitchen	4	17-18 D S	100	86	129	111	155	133
3Bedroom Duplex	4	2C	108	93	139	119	169	145
3Bedroom Duplex	4	4C	108	93	139	119	169	145
3Bedroom Duplex	4	6C	108	93	139	119	169	145
3Bedroom Duplex	4	8C	108	93	139	119	169	145
Lg Individual Cott	4	19 D	114	98	149	128	179	153
Lg Individual Cott	4	20	129	111	169	145	194	166

B – Base number of people per unit. Add \$10/person to above rates for additional people.

D – Dog allowed with advance permission. Minimum **\$20** charge per day.

S – Smoking permitted. Additional cleaning charge might apply.

Note: 7 night rate is equivalent to 7th night free. **Call** to get this rate – online booking will not handle.

**** Add 10% for a 1 night stay, if available. Must call.**