

FEATURES YOU'VE
ALWAYS WANTED

Few things are more rewarding than creating hand-crafted goods. With the eXperience 620 and 660's irresistible features, you'll very likely discover creative talents you never knew you had.



eXperience 620-660

TECHNICAL FEATURES

Built-in needle threader
Adjustable foot pressure
Adjustable sewing speed up to 820 (stitches per minute)
Automatic drop feed dog
Manuel thread tension (620)
Automatic thread tension (660)
Extra-high pressure foot lift
Horizontal rotary hook with transparent bobbin cover
Horizontal spool pin
Built-in thread cutter
Auto declutch bobbin winder
Metric and inch seam allowance lines
Free arm
Circular sewing pivot points

ACCESSORIES

standard metal foot, overlock foot, zipper foot, satin stitch foot, hemmer foot, blind hem foot, multi-cord foot, automatic buttonhole foot, extra-long buttonhole foot (660), 1/4 seam foot (660), darning foot (660), open toe walking foot (660), additional spool pin, spool stand, bobbins, needles, screwdriver, seam ripper, lint brush, knee lifter (660), circular sewing pivot points and pedal with retractable cable.

Many optional accessories available, see www.elna.com

STITCH FEATURES

	620	660
Stitches incl. buttonholes	60	200
Buttonholes	4	12
Alphabet	-	3
Maximum stitch width	7 mm	7 mm
Maximum stitch length	5 mm	5 mm

KEYS AND SCREEN

	620	660
LCD screen: stitches display, of its lenght and width	-	x
Up/down needle key	x	x
Auto-lock key (knot)	x	x
Reverse key	x	x
Start/Stop key	-	x
PS key (Personal Settings) to save your personalized adjustments	-	x
Permanent memories to save, recall, overwrite and clear sequences	-	x
Face-to-face and mirror key	-	x
Elongation key	-	x

WARRANTY AND SERVICE: Elna's superior reputation was established in 1940 with the production of its first sewing machine. Ever since, Elna has continued to be a leading brand of home sewing and related equipment especially designed with the innovative sewer in mind. Thousands of professionals worldwide provide expert service. Millions of people have chosen Elna for its quality, performance and reliability.



eXperience 620-660



TECHNICAL FEATURES

PROTECTION COVER
Chart of available Stitches and Buttonholes.

BUILT-IN NEEDLE THREADER
Change the thread easier in no time.

UPPER FEED DEVICE
Both models have all you need for your Quilting projects.



SCREEN AND STITCH DISPLAY
View the selected stitch with its length and width, the tension and the recommended foot.

DIRECT SELECTION
Ten useful stitches in direct selection mode.

STORAGE SPACE
In the upper case, on the side, storage with tilt-forward compartments for a permanent and easy access.



KNEE LIFTER (660)
Rise and lower the bar of the press to keep both hands free.

STORAGE AND ACCESSORIES

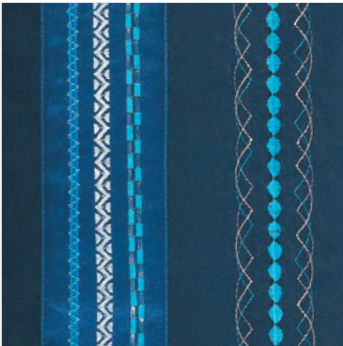


CARRYING BAG
Ideal for transporting and storing the machine and its accessories.



SEWING TABLE
Extra comfort to sew large scales sewing projects.

EASY AND FUN!



200 ENTICING STITCHES
Select from a wide array of stitches to express your sewing style. There's something for everyone.



CIRCULAR SEWING PIVOT
Perfect curves and circles are guaranteed by simply inserting the elna exclusive pin into one of the three points on the free arm.



PERSONAL SETTINGS (660)
The Personal Setting key (PS), allows you to reset the ten stitches in direct selection mode.



FREE ARM
Simply slide off the extension table to access the free arm and sew circular areas like sleeves, waistbands and pant legs.

Many possibilities
thanks to a large scale of integrated accessories and numerous stitches.

