



HS6008
 HS6013
 HS6017
 HS6024
 HS6028
 HS6032
 HS6040
 HS6057
 HS6085
 HS6110

HS SERIES WASHER EXTRACTORS **WASHING FOR A GREENER WORLD**



GIRBAU

HS SERIES WASHER EXTRACTORS

WASHING FOR A GREENER WORLD



WASHING SAVINGS



DURABILITY

The sturdy build of Girbau washing machines means:

- Girbau washing machines have a long working life and are virtually maintenance-free.
- Fabric lasts longer thanks to the careful treatment it receives during the washing process and the Care Touch Drum system.



PRODUCTIVITY

It is possible to set each washing parameter to suit the precise needs of each load (thereby saving time). This, combined with the stability of the process, which prevents unplanned stoppages, significantly increases productivity.



WATER AND ENERGY CONSUMPTION

Features like Aquamixer and Aquafall ensure maximum performance in washes with low water levels, minimising the water and power used.



SAFETY

Girbau washing machines have double safety features. The machine only starts up after checking that the door is closed and locked. In each washing cycle the system checks the dual status (open/closed) of the safety controls.



EASE OF USE

The machine is simple, intuitive and ergonomic both to use and to maintain.



FLEXIBILITY

HS Series washing machines and their controls can adapt to suit all kinds of business and laundering needs.

TAKING CARE OF THE FABRIC, TAKING CARE OF THE SKIN



For generations our mothers and grandmothers washed their linen in rivers or wash houses. Girbau keeps up the philosophy and the wisdom of these generations: washing thoroughly, but with the care of someone who values every garment.





GIRBAU

GREENING THE WORLD

One of the principles for achieving a better world is to respect it. This is the leitmotif that has always spurred Girbau on to manufacture washing machines that consume less natural resources and energy, that pollute less and have less impact in terms of CO2 emissions.

Series 6 washers make laundries into businesses that are environmentally friendly, by taking sustainability into account.

**Green laundries
for a greener world**



G
Drive

- + DURABILITY
- + SILENCE
- ELECTRIC CONSUMPTION

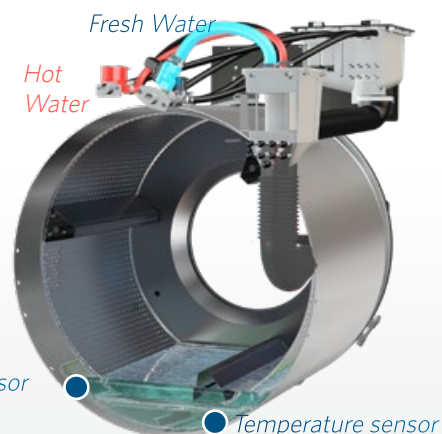
Girbau's exclusive control and communication system linking the inverter, motor and microprocessor ensures that the whole assembly is properly balanced and has a longer life. GDRIVE makes it possible to control the speed, correct imbalances and reduce noise (noise level below 70dB), vibration and component fatigue.



Aqua
MIXER

- + TEMPERATURE ACCURACY
- + FASTER CYCLE
- WATER AND ENERGY

A hot and cold water mixer that achieves a highly precise temperature with the programmed water level saves energy and reduces wash cycle time.



OPTIONS FOR HEATING

Electric

Steam

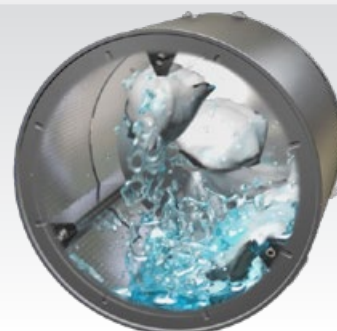
No heating (outside hot water feed)



Aqua
FALL

- + MECHANICAL ACTION
- + FASTER CYCLE
- WATER

Aquafall is the result of a study of the movement of water inside the drum. With a minimum level of water, and with recirculation through perforated blades, it provides a cascade flow, increases the washing action, reduces cycle time and saves water.





SOFT-MOUNT TECHNOLOGY

Free Standing
SM
Technology

- + FAST, FLEXIBLE INSTALLATION**
- RESIDUAL MOISTURE**

• EFFICIENT SPINNING

Girbau HS Series washing machines work at high spin speeds, up **to 400G** (depending on the model), extracting water efficiently (**residual moisture of less than 50%** depending on the fabric) and achieving energy savings on the subsequent drying process.

• SPINNING MANAGEMENT

With smaller loads than usual, the system for detecting and handling imbalances ensures a high spinning success rate without harming the mechanism.

• EASY INSTALLATION

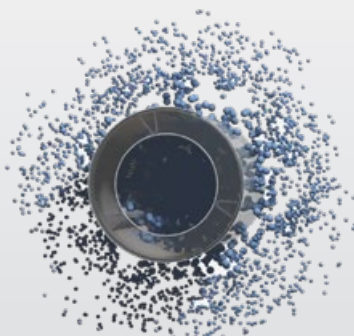
The Multi Directional Spring system absorbs vibration and noise so that no ground anchoring is required, making installation quick and easy.

• TOUGH DESIGN

The design is based on a calculation of structural tensions to avoid critical points and achieve a highly robust machine with a long working life, even when working under the most demanding conditions.



Multi Directional Springs



Spinning force 400G

WATERTIGHTNESS

- **MECHANICS:** Watertightness is assured by the double radial and axial seal with a large drainage chamber built in to stop any water leaking into the gearbox.
- **DOOR:** This uses an adjustable EPDM gasket system.
- **DRAINAGE:** This ensures fast draining of water from the bath, as well as preventing blockages due to solid particles and resisting today's chemicals, making it the most reliable on the market.

With the option of separate double water outlet.

(only on Inteli Control models).

GIRBAU
Genuine Spare Parts





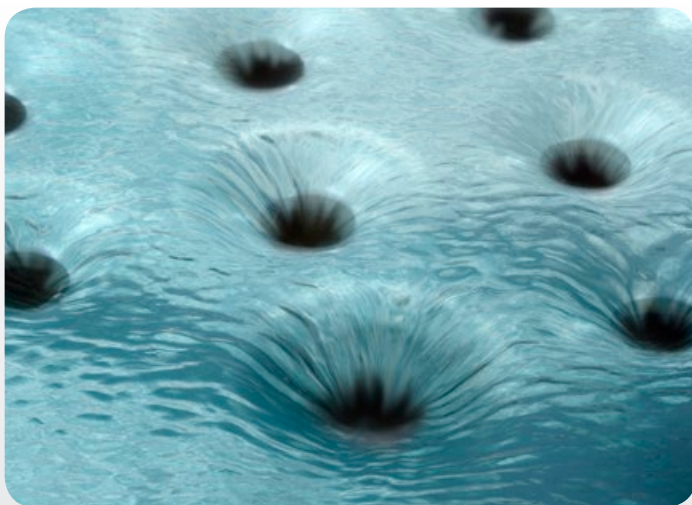
GIRBAU

**Care
Touch**
Drum

- + LINEN LIFETIME
- + QUALITY WASHING
- RESIDUAL MOISTURE

The system of pressed holes without sharp edges ensures that the linen is treated delicately and aids the evacuation of the water during the final spin, as well as ensuring fabrics are treated carefully.

This achieves low residual moisture levels and prolongs the useful life of fabrics.



Ozone
Ready

The drum is made from AISI-304L stainless steel with a Viton seal, **resistant to washing processes using ozone.**

VERSATILE DOSING

All models feature **internal and external dosing** systems. Chemicals are always diluted beforehand in the collector to avoid damaging fabrics by direct contact.

Inteli Control handles **up to 12 separate dosing signals** of adjustable length for external equipment. It also deals with communication with smart external dosing equipment.



Internal dosing
HS6008 / 6032



Internal dosing
HS6040 / 6110



External dosing and collector
HS6008 / 6110





- WATER
- ENERGY
- CHEMICALS

This feature **automatically adjusts** water consumption and dosing time proportionally according to the load weight, fabric and programme selected. This saves water, energy and chemicals in every process, without the operator needing to do anything.



WATER RECOVERY SYSTEMS

A water re-use circuit cuts consumption by up to 50% depending on recoverable rinses. This water is recovered for the prewash and wash phases.



ENERGY SAVING

Good management of the energy and time invested in the process have a direct impact on the profitability of your business. Girbau know-how has enabled us to **develop** new equipment with a view to energy efficiency, **reducing water consumption by 59% and time taken by 23%.**



Serie 2



Serie 3



Serie 4



Serie 6



The ECO60ew programme currently gives very low water consumption rates (approximately **7 litres per kg** depending on model) together with high wash quality. HS series models stand out as the most efficient according to WTL standards.



GIRBAU

ERGONOMICS AND ASSISTANCE FOR OPERATORS



The structure is designed according to ergonomic **criteria to make the operator's job easier.**

- The ratio between the diameter and depth of the drum is intended to make loading and unloading the washing machines easier.
- Large-diameter opening for loading.
- Rounded corners on the external casing to minimise impacts.
- Convenient access to all components of the machine to speed up maintenance tasks.
- Easy to operate door closing with minimum effort.



During loading the linen is compacted using water so as to minimise the work for the operator in completing loading. The water is used for the wash cycle.

While unloading with the door open the drum can be rotated alternatively both ways to untangle and free linen after the final spin.

(Available on HS6040 / 6057 / 6085 / 6110)



A tilting system angles the machine back to make loading easier and forwards during unloading. Features EASY LOAD and, as an option, remote control.

(Available on HS6040 / 6057 / 6085 / 6110)





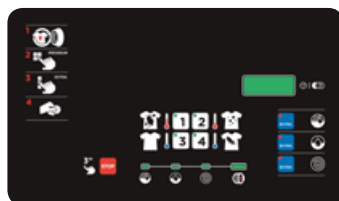
INTUITIVE, VERSATILE TECHNOLOGY

VENDED



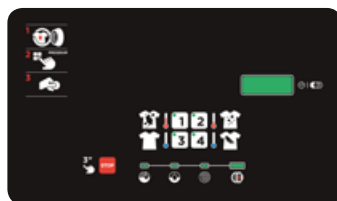
OPL

PROFIT PLUS CONTROL



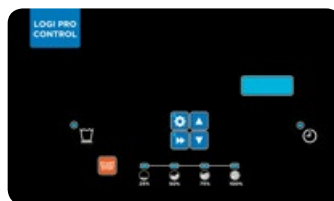
- 4 configurable programs and 3 **extra options specific to Vended Laundries**.
- Up to 6 phases per program.
- 4 water levels can be selected.
- Connection to an external dosing system.
- Adjustable length of dosing signal.
- Simultaneous dosing of two products.
- Failure check and alarm messages. Test program.
- Individual program and extra option counter.
- Price programming per time band, program and extra option.

COIN CONTROL



- 4 specific **configurable programs for Vended Laundries**.
- Up to 6 phases per program.
- 4 water levels can be selected.
- Connection to an external dosing system.
- Adjustable length of dosing signal.
- Simultaneous dosing of two products.
- Failure check and alarm messages. Test program.
- Individual cycle counter.
- Price programming per time band and program.

LOGI PRO CONTROL



- **25 configurable programs**
- Up to 11 phases per program.
- 6 water levels can be selected.
- Connection to an external dosing system.
- Adjustable length of dosing signal.
- Simultaneous dosing of two products.
- Failure check and alarm messages. Test program.
- **Just in Load** water and detergent consumption proportional to load weight.
- **Rinse Hold** crease-guard stop mode.
- Start-up at the desired time.
- Gradual cooling.
- Check operating parameters of the program under way.

LOGI CONTROL



- **8 configurable programs**
- Up to 9 phases per program.
- 4 water levels can be selected.
- Connection to an external dosing system.
- Failure check and alarm messages. Test program.
- **Rinse Hold** crease-guard stop mode (in final phase only).
- Start-up at the desired time.
- Gradual cooling (in wash phase only).

VENDED PAYMENT SYSTEMS

Payment with tokens, coins, vending or button systems.



**WET
Cleaning**
Ready

WET CLEANING

The ideal washing machine to deal with all delicate fabrics in wet cleaning processes.

The total control and configurability of all the parameters of the wash cycle make it possible to run all the most demanding processes with delicate linen.

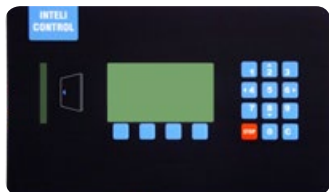
Among other things, Inteli Control allows the following:

- Control of linen swing motion.
- Water filling and emptying without any mechanical action.
- Accurate control of the temperature in the bath (+/- 1°C).



GIRBAU

INTELI CONTROL

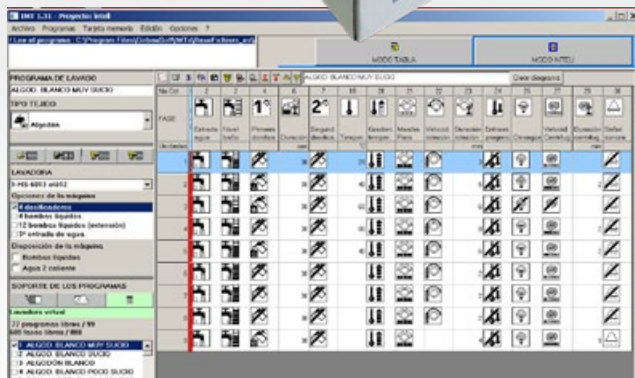


- **99 configurable programs.** 20 standard + 79 free.
- Unlimited number of phases.
- 6 water levels can be selected.
- Connection to an external dosing system.
- Adjustable length of dosing signal
- Simultaneous dosing of four products.
- Failure check and alarm messages. Test program.
- Option of manually adjusting parameters during washing.
- Smart Load. Automatic load detection and proportional consumption of water and/or detergent.
- Programmable gradual heating and cooling.
- **Rinse Hold** crease-guard mode stop.
- Start-up at the desired time.
- Individual total cycle and program counter.
- Programmable wash parameters.
 - Wash speed.
 - Spin speed.
 - Spin time in seconds or minutes.
 - 5 levels of adjustable mechanical action.
- Memory card.
- IMTX

IMTX

Inteli Manager Tool eXpert Software and Hardware to control wash programmes for every need and every customer by computer.

The programmes are stored on the computer and/or on the INTELI memory card, making it quick and easy to transfer information to washing machines.



HS SERIES WASHER EXTRACTORS



Model			HS6008	HS6013	HS6017	HS6024	HS6028
Settings			Stat	Stat	Stat	Stat	Stat
Drum dimensions	Capacity 1/9	kg (lbs)	9 (20)	14 (30.7)	19 (42.3)	27 (59.5)	31 (68.6)
	Capacity 1/10	kg (lbs)	8 (18)	13 (27.7)	17 (38.1)	24 (52.9)	28(61.7)
	Volume	dm³ (cu.ft)	79.2 (2.8)	126 (4.4)	173 (6.1)	239 (8.4)	280 (9.9)
	Ø	mm (in.)	536 (21.1)	620 (24.4)	700 (27.6)	765 (30.1)	825 (32.5)
	Depth	mm (in.)	351 (13.8)	416 (16.4)	450 (17.7)	520 (20.5)	524 (20.6)
Machine dimensions	Width L	mm (in.)	685 (27)	796 (31.3)	868 (34.2)	975 (38.4)	1.053 (41.5)
	Depth P	mm (in.)	700 (27.6)	887 (34.9)	962 (37.9)	1.225 (48.2)	1.294 (50.9)
	Height H	mm (in.)	1.080 (42.5)	1.325 (52.2)	1.404 (55.3)	1.477(58.1)	1.500 (59.1)
	Ø Door opening	mm (in.)	322 (12.7)	327 (12.9)	426 (16.8)	426 (16.8)	426 (16.8)
	Floor to door h	mm (in.)	390 (15.4)	509 (20)	515 (20.3)	581 (22.9)	600 (23.6)
Weights	Net weight	kg (lbs)	124 (273)	344 (13.5)	476 (1049)	584(1.289)	636 (1.401)
	Crated weight	kg (lbs)	134 (295)	372 (820)	500 (1.100)	607 (1.338)	674 (1.485)
Crated dimensions	Width L'	mm (in.)	720 (28.3)	823 (32.4)	897 (35.3)	1.002(39.4)	1.075 (42.3)
	Depth P'	mm (in.)	740 (29.1)	945 (32.7)	1.017 (40)	1.260 (49.6)	1.320 (52)
	Height H'	mm (in.)	1.212 (47.7)	1.494 (58.8)	1.565 (61.6)	1.630 (64.2)	1.657 (65.2)
Motors power	Wash	kW	0,3	0,4	0,6	0,7	1,2
	Spin	kW	0,6	0,9	1,3	1,8	1,9
Speeds	Wash LOGI. COIN	r.p.m	50	44	44	42	-
	Wash INTELI	r.p.m	-	17-44	17-44	22-42	20-42
	Positioned	r.p.m	100	100	100	86	83
	Spin INTELI (* can be modified)	r.p.m	400,600,800,970,1000	400,600,800,1,000	375,570,750,950	350,550,725,996	335,530,698,937
	G-Force		283	351	354	400	405
Electric heating	Electric heating	kW	1ph: 4, 6 3ph: 6	1ph: 6 ó 8 3ph: 9 ó 12	1ph: 6 ó 10 3ph: 9 ó 15	12 ó 19.5	19,5
	Voltage	H.V	120V 1ph 60Hz 200-240V 1ph 50/60Hz	200-240V 1ph 50/60Hz	200-240V 1ph 50/60Hz	200-240 V 1ph 50/60Hz 200-480V 3ph 50/60Hz	200-240 V 3ph 50/60Hz 380-480V 3ph 50/60Hz
		E	200-240V 1 ó 3ph 50/60Hz 380-415V 3ph 50/60Hz	200-240V 1 ó 3ph 50/60Hz 380-415V 3ph 50/60Hz	200-240V 1 ó 3ph 50/60Hz 380-415V 3ph 50/60Hz	200-240V 1 ó 3ph 50/60Hz 380-415V 3ph 50/60Hz	200-240 V 3ph 50/60Hz 380-415V 3ph 50/60Hz
Ø Drain	Gravity	mm(in.)	50 (2)	76 (3)	76 (3)	76 (3)	76 (3")
	Pump		25 (1)	-	-	-	-

H.V: Hot water heating.Steam heating E: Electric heating E: Calefacción eléctrica

Model			HS6008	HS6013	HS6017	HS6024	HS6028
Controls			Logi / Logi Pro / Coin / Profit Plus	Logi / Inteli / Coin / Profit Plus	Logi / Inteli / Coin / Profit Plus	Logi / Inteli / Coin / Profit Plus	Inteli
Dosing	Dosing Position		Top / Front	Top	Top	Top	Top
	Internal Dosing		4	4	4	4	4
	External Dosing		4	4 (+8 Option)	4 (+8 Option)	12	12
Panels	Precoated		-	•	•	•	•
	Front Stainless Steel		•	O	O	O	O
	All Stainless Steel		O	O	O	O	O
Water	Inlet	Third Water Inlet (Only INTELI)	-	O	O	O	O
		Type	Gravity/Pump	Gravity	Gravity	Gravity	Gravity
		Normal Open	•	•	•	•	•
		Normal Closed	O	-	-	O	O
		Second drainage (Only INTELI)	-	O	O	O	O
Pedestal	Basic		O	O	O	-	-
	Heavy		O	O	O	O	O
	Heavy Low		O	O	O	O	O
Weighing System		(Only INTELI)	-	-	-	O	O
Handheld for TILT		(Only INTELI)	-	-	-	-	-

• Standard / O Optional / - Not available

HS SERIES WASHER EXTRACTORS



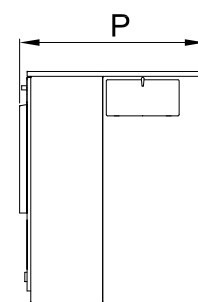
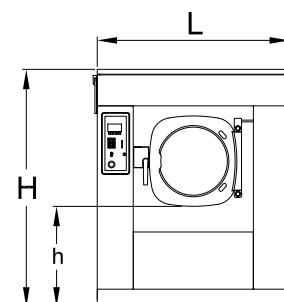
Model		HS6032		HS6040		HS6057		HS6085		HS6110	
Settings			Stat	Stat/Easy Load	Tilt	Stat/Easy Load	Tilt	Stat Easy Load	Tilt Easy Load	Stat/Easy Load	Tilt
Drum dimensions	Capacity 1/9	kg (lbs)	36 (78,3)	44 (96.7)		63 (139.3)		95 (208)		122 (269.5)	
	Capacity 1/10	kg (lbs)	32 (70.5)	40 (87.1)		57 (125.7)		85 (188)		110 (242.5)	
	Volume	dm³ (cu.ft)	320 (11,3)	395 (13.9)		569 (201)		850 (30)		1100 (38.8)	
	Ø	mm (in.)	825 (32,5)	900 (35.4)		1.080 (42.5)		1.310 (51,6)		1.310 (51,6)	
	Depth	mm (in.)	598 (23,5)	621 (24.4)		621 (24.4)		630 (24,8)		816 (32,1)	
Machine dimensions	Width L	mm (in.)	1.053 (41,5)	1.390 (54.7)	1.470 (57.9)	1.570 (61.8)	1.650 (65)	1.770 (69.7)	1.838 (72.4)	1.770 (69.7)	1.838 (72.4)
	Depth P	mm (in.)	1.294 (50,9)	1.455 (57.3)	1.613 (63.5)	1.493 (58.8)	1.613 (63.5)	1.939 (76.3)	2.058 (81)	1.939 (76.3)	2.058 (81)
	Height H	mm (in.)	1.500 (59,1)	1.798 (70.8)	1.988 (78.3)	1.925 (75.8)	2.115 (83.3)	2.068 (81.4)	2.256 (88.8)	2.068 (81.4)	2.256 (88.8)
	Ø Door opening	mm (in.)	426 (16,8)	558 (22)		558 (22)		684 (26.9)		684 (26.9)	
	Floor to door h	mm (in.)	600 (23,6)	659 (25.9)	849 (33.4)	812 (32)	1.002 (39.4)	807 (31.8)	995 (39.2)	807 (31.8)	995 (39.2)
Weights	Net weight	kg (lbs)	680 (1.499)	1409 (3.106)	1.725 (3803)	1.932 (4260)	2.252 (4.965)	3.756 (8.281)	4.108 (9.058)	3.885 (8.566)	4.238 (9.343)
	Crated weight	kg (lbs)	718 ((1.582,9)	1.544 (3.405)	1954 (4.309)	2.103 (4636)	2.517 (5.549)	4.007 (8.834)	4.479 (9.874)	4.108 (9.056)	4.580 (10.098)
Crated dimensions	Width L'	mm (in.)	1.075 (42,3)	1.520 (59.8)	1.520(59.8). 1.080 (42.5)	1.690 (66.5)	1.690(66.5). 1.080(42.5)	1.950 (76.8)	1.950(76.8). 1.080(42.5)	1.950 (76.8)	1.950(76.8). 1.080(42.5)
	Depth P'	mm (in.)	1.320 (52)	1.580 (62.2)	1.580(62.2). 1.980(77.9)	1.646 (64.8)	1.646(64.8). 1.980(77.9)	2.120 (83.5)	2.120(83.5). 1.980(77.9)	2.120 (83.5)	2.120(83.5). 1.980(77.9)
	Height H'	mm (in.)	1.657 (65,2)	2.030 (79.9)	2.030(77.9). 700 (27.5)	2.160 (85)	2.160(85). 700(27.5)	2.245 (88.4)	2.245. 700 (88.4). 700(27.6)	2.245 (88.4)	2.245(88.4). 700(27.6)
Motors power	Wash	kW	1,2	1,5		2,8		3,9		4,5	
	Spin	kW	1,9	4,8		7,3		9		11,0	
Speeds	Wash COIN	r.p.m	36	-		-		-		-	
	Wash INTELI	r.p.m	20-41	13-40		13-36		13-32		13-32	
	Positioned	r.p.m	83	79		72		66		66	
	Spin INTELI (*can be modified)	r.p.m	335,530,698,930	325,490,680,870		300,450,625,800		250,405,565,725		250,405,565,725	
	G-Force		400	381		387		386		386	
Electric heating	Electric heating	kW	19,5	10.8 ó 21.6		16.5 ó 33		-		-	
	Voltage	H.V	200-240 V 3ph 50/60Hz 380-480V 3ph 50/60Hz	200-480V 3ph 50/60Hz		200-480V 3ph 50/60Hz		200-240 V 3ph 50/60Hz 380-480V 3ph 50/60Hz		200-480V 3ph 50/60Hz	
		E	200-240 V 3ph 50/60Hz 380-415V 3ph 50/60Hz	200-415V 3ph 50/60Hz		200-415V 3ph 50/60Hz		-		-	
Ø Drainage	Gravity	mm(in.)	76 (3")	76 (3)		76 (3)		130 (5")		130 (5")	
	Pump		-	-		-		-		-	

H.V: Hot water heating.Steam heating E: Electric heating

GIRBAU S.A. reserves the right to change specifications without notice

Model		HS6032	HS6040	HS6057	HS6085	HS6110
Controls	Controls	Inteli / Coin / Profit Plus	Inteli	Inteli	Inteli	Inteli
Dosing	Dosing Position	Top	Side	Side	Side	Side
	Internal Dosing	4	4	4	5	5
	External Dosing	12	12	12	12	12
Panels	Precoated	•	•	•	•	•
	Front Stainless Steel	○	○	○	○	○
	All Stainless Steel	○	○	○	○	○
Water	Inlet Drainages	Third Water Inlet (Only INTELI)	○	○	○	○
		Type	Gravity	Gravity	Gravity	Gravity
		Normal Open	•	•	•	•
		Normal Closed	○	○	○	○
		Second drainage (Only INTELI)	○	○	○	○
Pedestal	Basic	-	-	-	-	-
	Heavy	○	○	-	-	-
	Heavy Low	○	○	-	-	-
Loading System	(Only INTELI)	○	○	○	○	○
Handheld for TILT	(Only INTELI)	-	○	○	○	○

• Standard / ○ Optional / - Not available TT



E&B

EASY & BEST SOLUTIONS

EASY AND SUSTAINABLE SOLUTIONS

We propose a new way of working, aimed at achieving the best solution in the easiest way possible.

Just let us know your production requirements. We will take care of the rest.

Easy and best



GIRBAU

BRANCHES

Argentina - Buenos Aires - Tel. +54-1149017600 - girbauargentina@girbau.com
 Australia - Sydney - Tel. +61 2 96755860 - sales.australia@girbau.com
 Brazil - Sao Paulo - Tel. +55 11-29820446 - girbaudobrasil@girbau.com
 China - Shanghai & Hongkong - Tel. +86-21-5713 1103 - info.china@girbau.com
 Cuba - La Habana - Tel. (+53-7) 8662071 al 73 - girbau@girbau.co.cu
 Dominican Rep. - Punta Cana - Tel. +1 809-959-0615 - infodominicana@girbau.com
 France - Grévy sur Aix - Tel. +33 456 574 030 - infofrance@girbau.com
 Germany - Ratingen - Tel. +49 2102 9934619 - girbaugermany@girbau.com
 Italy - Marcon (VE) - Tel. +39 0418654330 - infoitaly@girbau.com
 Mexico - Cancún - T. +52 998 688 6336 - info.mexico@girbau.com
 Portugal - Porto - Tel. +351 22 3758909 - vendasportugal@girbau.com
 U.A.E. - Dubai - Tel. +971 4-8839951 - sales.gme@girbau.com
 U.K. - Hitchin - Tel. +44(0)-1462 427780 - info.uk@girbau.com
 U.S.A. - Oshkosh, WI & Los Angeles, Ca - Tel. +1(920) 2318222 - info@cgilaundry.com

HEADQUARTERS

GIRBAU, S.A. Ctra de Manlleu, km. 1 - 08500 Vic (Barcelona) Spain - girbau.com
 Tel. (+34) 93 886 2219 - sales@girbau.com



See video



WRAS
APPROVED
PRODUCT

