

INNOVEX

When Vision Matters...

SINGLE-USE FLEXIBLE URETEROSCOPE



Endotherapeutics

IMPROVING HEALTHCARE

THE INNOVEX ADVANTAGE

Features

- No delay between scope movement and visual on screen
- High resolution images- (400 x 400) 160K pixels
- Fits through a 10 Fr access sheath
- 275° up and down deflection
- Small footprint digital video processor

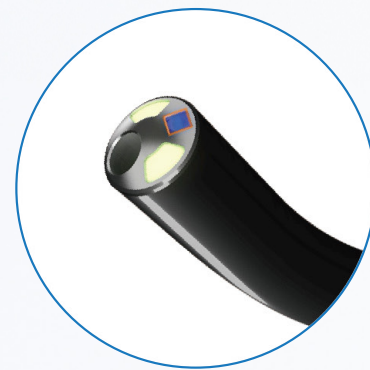
Benefits

- Light weight ureteroscope reduces fatigue
- Always available when there is a high risk of damaging a reusable ureteroscope
- Always available whenever demand for reusable ureteroscopes is exceeded
- Clear, sharp images during laser lithotripsy cases
- Improved irrigation for reduced kidney pressures
- Easy navigation and access to lower pole stones
- Integrates into existing theatre equipment

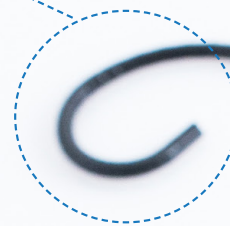


High-Resolution Image 160K Pixels

Auto focus, white balance and adaptive LED light control function guarantees clear and sharp images during lithotripsy.



Tip diameter 9.3 Fr with digital CMOS
275° up and down deflection



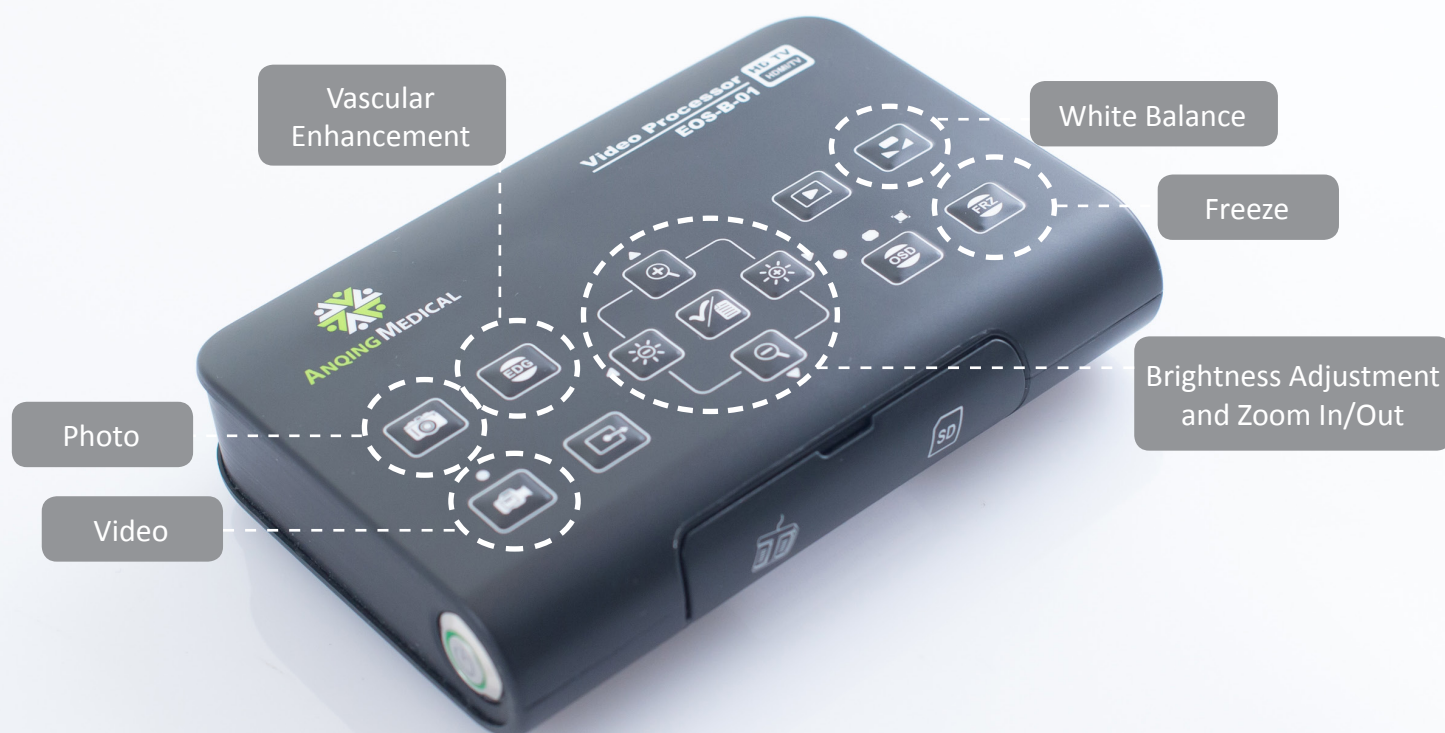
Proximal diameter 8.7 Fr

3.6 Fr straight working channel



Separate irrigation port

DIGITAL VIDEO PROCESSOR



Specifications and Technical Data

Model EOS-B-01

Power Supply	Voltage 100-240V AC Frequency 50/60 Hz
CMOS Resolution	400 (horizontal) x 400 (vertical) pixels
Outputs	HDMI, DVI, USB3.0
Examination Lamp	2 LEDs 4500 lux/each LED Brightness temp 6500K
Image Function	Auto focus, white balance, brightness adjustment, edge reinforcement, zoom in & out, photo & video replay, foot panel for photo and freeze
Image Storage	32G SD card for photo and video