

## AREAS

1ST FLOOR	2,540 SQ. FT.
2ND FLOOR	330 SQ. FT.
TOTAL LIVING	2,870 SQ. FT.
2-CAR GARAGE	770 SQ. FT.
FRONT PORCH	170 SQ. FT.
BACK PATIO	590 SQ. FT.
TOTAL UNDER ROOF	4,400 SQ. FT.

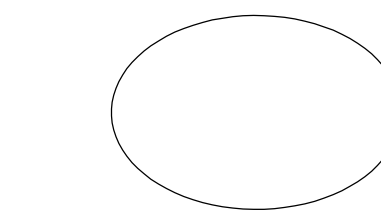


2868  
ATTIC  
ACCESS

18  
RISERS  
DOWN

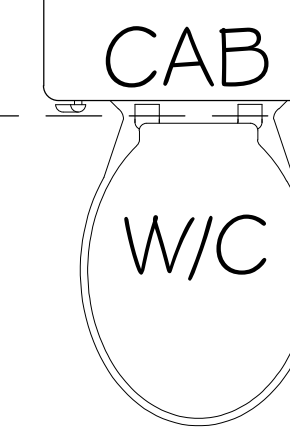
3068

8'-4" TALL



4'-4" LAV

DWR



CAB

W/C

BATH  
#3

TUB/  
SHWR.

BEDROOM  
#3  
13'-0" X 11'-8"  
9' CEILING

2468

2R-25

WALK-IN  
CLOSET

SHLVS

2468

2R-25

ATTIC  
ACCESS  
2868

30/48 CSMT

VLT  
8'-9"

VLT  
8'-9"