

Langley Square, Dartford



Project: Weston Homes PLC – Langley Square

Location: Mill Pond, Dartford, DA1 5LR

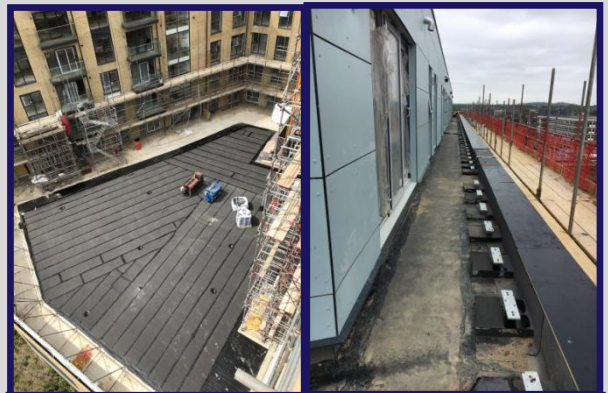
Roof Area: 6500m²

Specification: IKO PermaTEC

Built on the Mill Pond site in Dartford, lying in a valley with the River Darent flowing through to meet the Thames and within reach of the City, the homes at Langley Square are part of Dartford's significant industrial history.

We are an IKO approved contractor and thus were able to meet the specification and installed an IKO PermaTEC hot melt structural waterproofing system to the roof, terrace and podium areas providing a 20 year insurance backed guarantee. We insulated using IKO Enertherm XPS insulation to meet the required U value for each area. The roofs were finished with 20-40mm washed pebbles and the terraces received Marshall concrete paving slabs.

We have been awarded multiple phases of the Mill Pond development, reinforcing the fact that we have delivered the projects to the highest quality and in a timely manner.



Southern Mastic Roofing Ltd

Unit E, Birling Place Farm, Stangate Road, Birling, Kent, ME19 5JN

T: 01634 242133 E: Enquiries@southernmasticroofing.co.uk