

FD68-RF Remote Fan Burner

FD68-RF

 **johnson** burners

Custom Engineered for Maximum Performance
Designed for Watertube, Large Firetube Boilers
Ideal for High Furnace Pressure Applications
Sub-30 ppm NOx with FD68-LN-RF Model

Features

- Capacities: 800 to 2500 boiler HP
- Natural Gas, LPG, Biogas, other gaseous fuels
- No. 2 to 6 Fuel Oil • Air or Steam Atomized
- Combination Gas & Oil
- Efficient, low excess air combustion
- Wide turndown
- UL configuration standard
- IRI, FM, NFPA optional

Flexible Design

Various configurations to suit most boiler designs
Air and fuel inlet location to match boiler configuration
Packaged system for single-source solution

Complete Burner Package

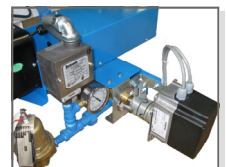
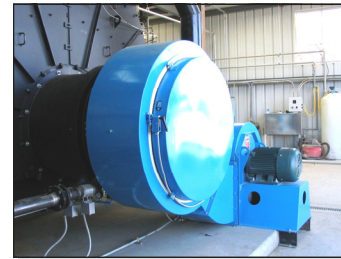
Heavy duty windbox with hinged access door for maintenance
Efficient air register with stainless steel airfoil spinner
Packaged forced draft fan with premium efficiency motor
Multi-louver air control damper
Gas-electric ignition system
Main gas valve train and gas pressure regulator
Pilot gas valve train
Refractory burner throat
Oil valve train, oil pump, strainer on oil-fired units
Atomizing air compressor on air-atomized units
FGR inlet duct, modulating and shutoff valves on FD68-LN-RF

State of the Art Controls

NEMA 1 or NEMA 4 control panel
Microprocessor based Flame Safeguard control
Linkage-less parallel positioning fuel-air ratio control with precision servomotors for air damper and fuel valves
Gas, oil safety interlocks as applicable

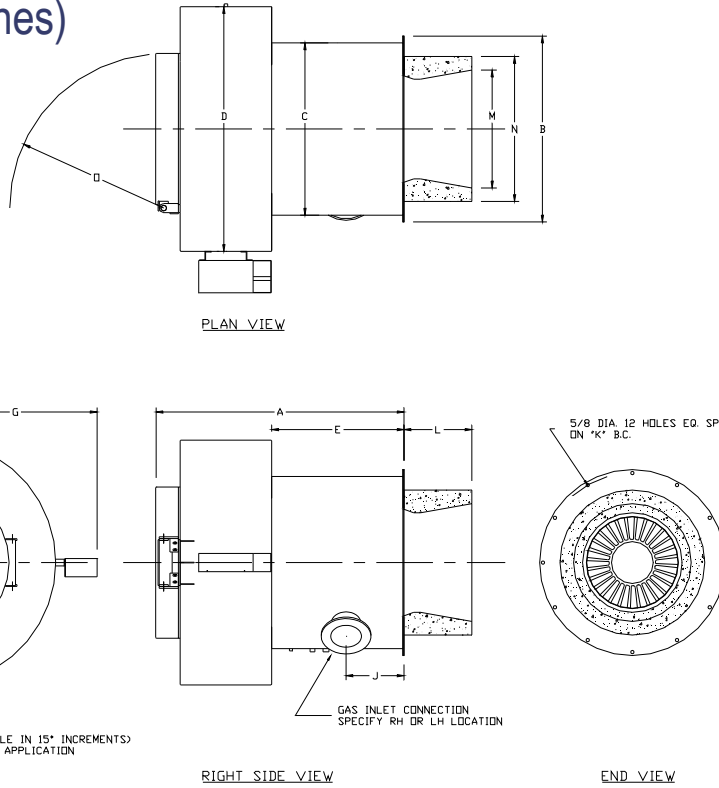
Enhanced Energy Efficiency Options

Variable speed drive for combustion air fan
Oxygen trim
Multiple boiler lead-lag sequencing
Automatic draft control



Capacities and Dimensions (inches)

Note.- Combustion air fan and air duct dimensions not shown. Air fan selected for each individual project based on static pressure requirement, emissions and elevation.



Burner Size	MBTU/Hr	A	B	C	D	E	F	G	H	I	J	K	L	M	N	O
800	32,700	55	41	38	53.88	29.25	27.63	36.13	27	*	12.88	38.675	13.5	20.25	23.75	34.13
900	36,800	55	41	38	53.88	29.25	27.63	36.13	27	*	12.88	38.675	13.5	23.75	28	34.13
1000	40,900	55	41	38	53.88	29.25	27.63	36.13	27	*	12.88	38.675	13.5	23.75	28	34.13
1100	45,000	55	41	38	53.88	29.25	27.63	36.13	27	*	12.88	38.675	13.5	23.75	28	34.13
1200	49,000	55	41	38	53.88	29.25	27.63	36.13	27	*	12.88	38.675	13.5	26	32	34.13
1300	53,100	55	41	38	53.88	29.25	27.63	36.13	27	*	12.88	38.675	13.5	26	32	34.13
1500	63,000	60	45	42	54	**	29.63	37.5	29	*	13	42.675	**	**	**	36
1800	75,600	68	60	**	54	**	**	**	**	**	14	57.675	**	**	**	**
2000	84,000	68	64	**	58	**	**	**	**	**	14	61.675	**	**	**	**
2200	92,400	74	64	**	58	**	**	**	**	**	14	61.675	**	**	**	**
2500	105,000	74	64	**	58	**	**	**	**	**	14	61.675	**	**	**	**

Notes.

- (***) Consult factory.
- Burner dimensions and locations of valves and ducts represent basic design only. Actual design may vary according to job requirements.

S.T. Johnson Company

925 Stanford Ave. • Oakland, CA 94608 • USA
 Phone (510) 652-6000 • Fax (510) 652-4302
 www.johnsonburners.com

Your authorized S.T. Johnson distributor