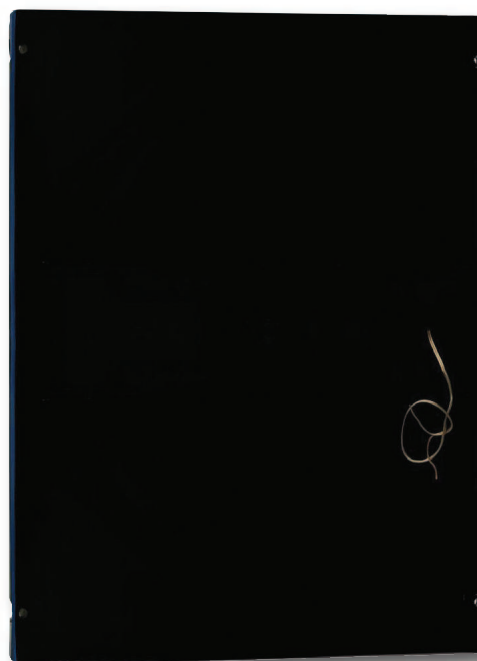


# AI 64 M Series

## Totally invisible Loudspeakers



FRONT



BACK

The invisible loudspeakers **ELAB AI 64 M** are the only flat loudspeakers **really invisible!** They are hemispherical diffusion transducers on a two way system. After being installed on the wall and/or ceiling **they can be painted with any kind of water based paint**, otherwise covered with light wall paper or light fabric, giving perfect integration with the surroundings. The design guarantees complete invisibility together with **insuperable sound distribution**.

Architects and interior designers can therefore achieve important results, integrating the latest sound quality with modern technology, satisfying the most demanding client's wishes into reality, whether it be the fascination of the big screen, cinema at home or in the spatial distribution of music in every corner of the house.

### APPLICATIONS:

Home theatre, multiroom systems, sound screens, conference rooms, schools, cinemas, museums, multimedia path, hotels, shopping centre, wellness & Spas, Fitness Clubs, and so on.

### SPECIFICATIONS

Frequency response	40Hz—19KHz	Weight	6,5 Kg.
Power	75 Watt RMS	Accessory:	
Impedance	8 Ohm*	Wood fitting frame TLE64M	
Sensitivity	92 dB@1W/1 mt.	Frame dimension: 65 x 50 x 7,5 cm.	
Dimension	(H-W-D) 59,5x44,5x7,5 cm.	Frame weight: 1,5 Kg.	

\* Available also with 70-100 Volt transformer

MADE IN ITALY



Viale Primo Maggio 9/b – **00046 Grottaferrata** – ITALY – **www.elabsound.it**  
Tel. +39 06.9456102 – Fax +39 06.94149098 – E.mail: m.dilorenzo@elabsound.it

# AI 64 M Series

## Totally invisible Loudspeakers

### *Example of a ceiling installation*



1. Wood frame installation



2. Loudspeaker mounting



3. Plastering



4. Application of the protective papersheet



5. Preparation for painting



6. Final result

### *Example of a wall installation*



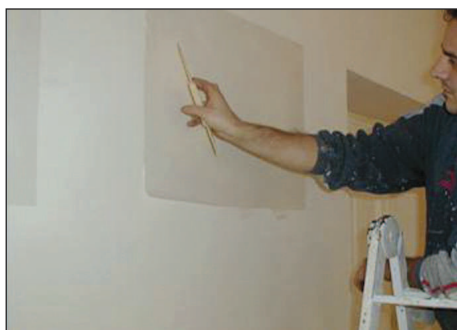
1. Wood frame installation



2. Loudspeaker mounting



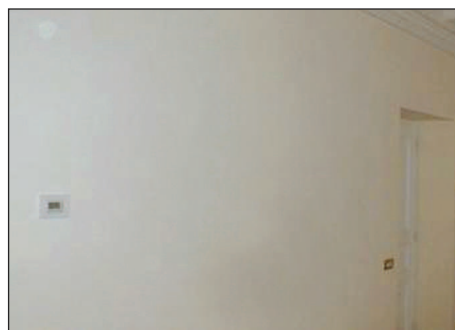
3. Plastering



4. Application of the protective papersheet



5. Preparation for painting



6. Final result for a totally invisible sound screen

