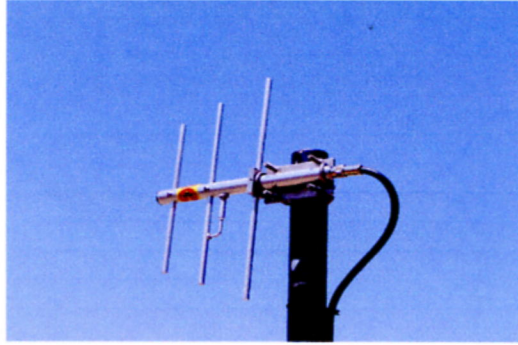
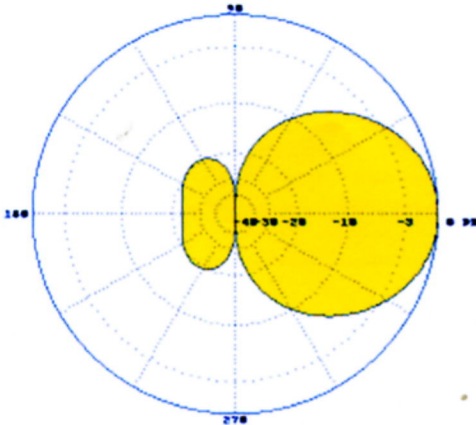


SAMCO ANTENNAS, INC.

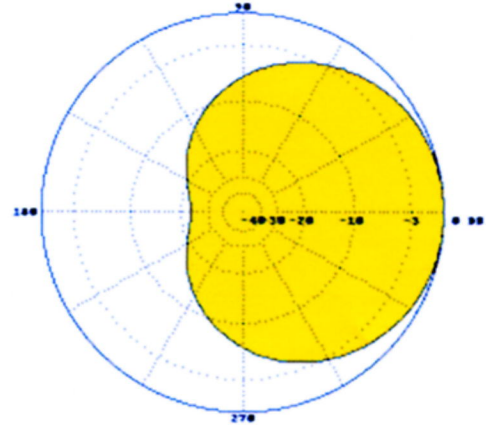
SAM-436



Plots are normalized at 434MHz



E Plane Plot



H Plane Plot

SPECIFICATIONS

ELECTRICAL

Frequency-----400/499MHz
Bandwidth-----20+ MHz
VSWR-----1.5 to 1 or less
Impedance-----50 ohms
Forward Gain-----6 db
Front to Back Ratio----20+ db
Polarization-----Vertical or Horizontal
Lighting Protection----Direct Ground
Power Handling-----300 Watts
Termination-----Type N Female

MECHANICAL DATA

Materials-----Aluminum
Boom-----1" Reinforced Tube
Elements-----3/8" Rod
Driven Element-----3/8" Rod
Wind Survival-----100 mph
Standard Mounting--V-bolts, 1" to 2" pipe
Overall Length-----12.5 inches
Shipping Weight-----Approx. 2.5 lbs