

**FLAG**

by **SOPREMA**

Synthetic Waterproofing Solutions



flexible sustainable  
**high performance**  
synthetic waterproofing  
membrane

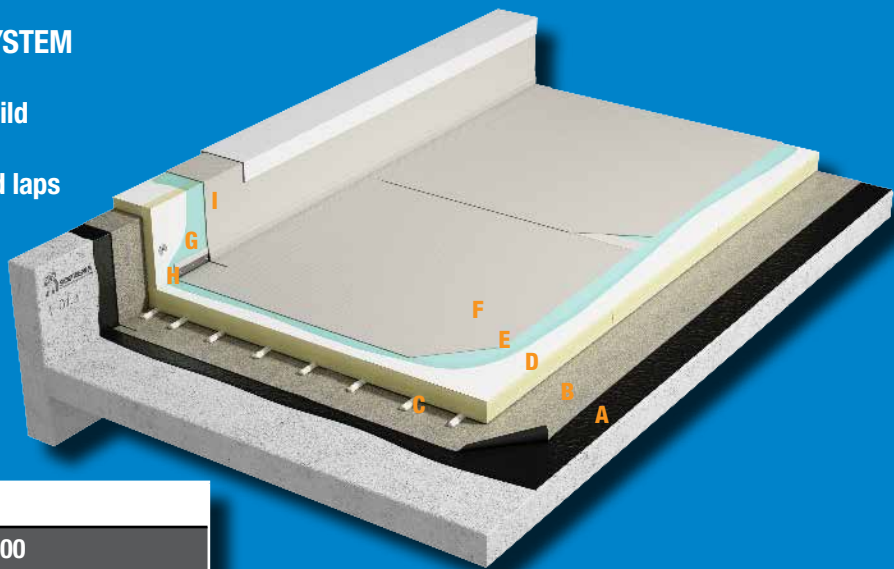
flagon tpo



**SOPREMA**  
GROUP

## WARM ROOF FULLY ADHERED TPO SYSTEM

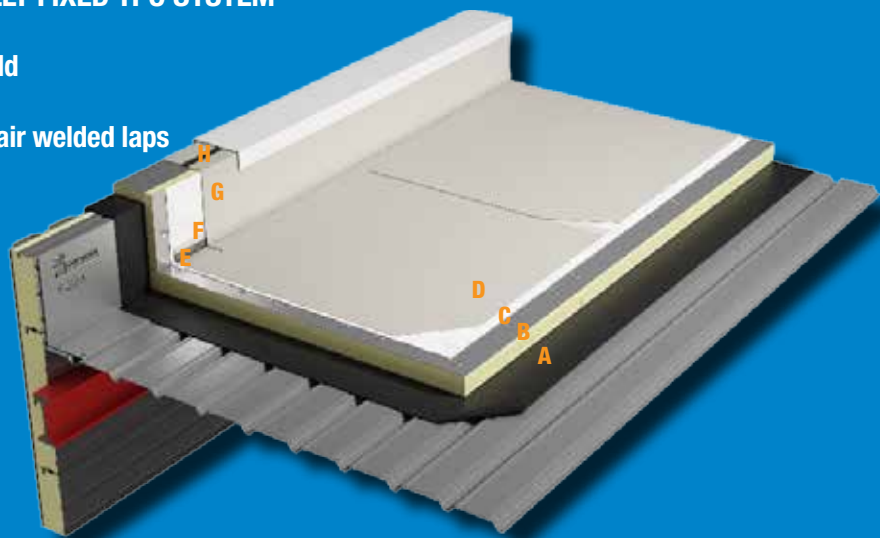
Project type: Refurbishment and new build  
 Substrate: Concrete  
 Installation: Adhered with hot air welded laps  
 Warranty: 20 Year



Component	Product	
A	Primer	Elastocol 600
B	Vapour barrier	Sopravap Stick Alu S16
C	Insulation adhesive	Coltack Evolution
D	Thermal insulation	Sopratherm G
E	Adhesive	Flexocol W LV
F	Waterproofing membrane	Flagon EP/PVF 1.5mm
G	Upstand adhesive	Flagon EP Bonding Adhesive
H	Metal	Flag Peel Stop
I	Upstand waterproofing	Flagon EP/PV 1.5mm

## WARM ROOF WITH SELF MECHANICALLY FIXED TPO SYSTEM

Project type: Refurbishment and new build  
 Substrate: Metal deck  
 Installation: Mechanically fixed with hot air welded laps  
 Warranty: 20 Year



Component	Product	
A	Vapour layer	Vapour Flag
B	Thermal insulation	Sopratherm F
C	Geotextile	Geotextile Fleece
D	Waterproofing membrane	Flagon SR 1.5 mm
E	Metal	Flag Bar
F	Cord	TPO Flagofil
G	Upstand waterproofing	Flagon SR 1.5mm
H	Metal	Flag Peelstop

### FLAGON TPO ADVANTAGES

- + Excellent weld ability and flexibility
- + Exceptional dimensional stability
- + High weather and UV resistance
- + Non toxic
- + BREEAM A+ rating
- + Adaptable to structural movement

### FLAGON TPO WATERPROOFING SYSTEMS

Flagon TPO waterproofing systems are suitable for both new build and refurbishment projects. A wide range of systems have been developed for exposed flat roofs, inverted roofs, barrel roofs, ballasted roofs including roof gardens and building facades.

With such a wide range of systems available, even the most complex designs can be achieved with Flagon TPO waterproofing systems. Bespoke and hybrid systems can be specified to achieve specialist and complex project requirements.

# flagon tpo

### APPLICATIONS

The Flagon TPO membrane range offers waterproofing systems for fully adhered, ballasted, and mechanically fixed applications.

### CERTIFICATION

Flagon TPO is BBA certified. We know from experience that roofs waterproofed with Flagon TPO have a life expectancy in excess of 30 years, this expectancy is further increased with the addition of a green roof system.

### FLAGON TPO SYNTHETIC MEMBRANES

Flagon TPO membranes represent an industry leading range of synthetic waterproofing membranes. Flagon product development is based on experience and innovative manufacturing technologies. During the manufacturing process rainwater is collected and used to cool machinery, then recirculated through a closed circuit, avoiding any chance of environmental pollution.

Flagon TPO membranes have a unique formulation, and were the first to achieve an A+ BREEAM Green Guide rating, making Flagon TPO the perfect waterproofing solution to specify beneath green roof systems.

With a life expectancy of over 30 years, Flagon TPO membranes guarantee longevity.

### STANDARD COLOURS



Lead Grey



Sand



Flagon TPO membranes can be matched to any RAL Colour, as well as graphic treatments such as symbols and logos.



Great Western Hospital, Swindon



Thames Cable Car, London

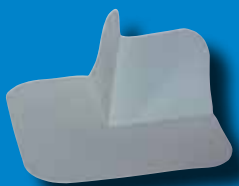


New Atlas Wharf, London

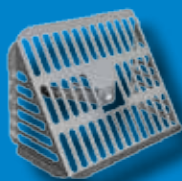


Victoria Plaza, Belfast

### COMPLIMENTARY SYSTEM COMPONENTS



Internal & External Corners



Leaf Guards & Outlets

A full range of ancillary system components and accessories are available to compliment Flagon TPO waterproofing systems, all of which are covered by the Sopracover warranty.

### SOPRACOVER WARRANTY

15 to 20 year warranties are available for Flagon TPO waterproofing systems as standard, determined by the system specified.

All SOPREMA products are installed by approved contractors to ensure a consistent standard of workmanship. There are no minimum surface area or project value requirements to qualify for the Sopracover warranty.



## SOPREMA at your service

Would you like to discuss a current or future project?  
Do you have questions about the installation of **Flagon TPO**?

For technical questions please call our technical department:  
**UK +44 (0) 845 194 8727 / [info@soprema.co.uk](mailto:info@soprema.co.uk)**  
**IRELAND: +353 (0) 1 462 58 87 / [info@soprema.ie](mailto:info@soprema.ie)**

Find out more at [www.soprema.co.uk](http://www.soprema.co.uk) / [www.soprema.ie](http://www.soprema.ie)



# SOPREMA

**SOPREMA UK** 4 Lancaster Way, Earls Colne Business Park, Earls Colne, Colchester, Essex, UK CO6 2NS  
Tel: +44 (0) 845 194 8727 | Fax: +44 (0) 845 194 8728  
[info@soprema.co.uk](mailto:info@soprema.co.uk) | [www.soprema.co.uk](http://www.soprema.co.uk)

**SOPREMA IRELAND** Unit 75A Cookstown Industrial Estate, Tallaght, Dublin 24, Ireland  
Tel: +353 (0) 1 405 77 96 | Fax: +353 (0) 1 462 58 87  
[info@soprema.ie](mailto:info@soprema.ie) | [www.soprema.ie](http://www.soprema.ie)