

“A mobility solution  
that’s ready to get the  
work done better”



# Introducing VERSITY

NEXT GENERATION MOBILITY SOLUTION

From the Creators of VERSITY:  
Attributes we are most excited about.

Thinness

True Hot Swap Battery

Lighting Fast Bar Code Scanner

Grid Camera

Speed of Key Response

RFID

Fresh look of the Spectralink App User Interfaces and Cool New App Icons

Multi-Use Fingerprint Button on the Back of the Phone

Form Factor

WiFi Optimization

Advanced Audio and Noise Suppression

WiFi Voice Quality


*"This definitely exceeds my expectations of what I thought the DVT would be!"*

# VERSITY

THE SAVVIEST PURPOSE-BUILT  
ENTERPRISE SMARTPHONE







## Where do today's consumer smartphones fall short?

TCO – Lifecycle <18 months

Purpose-built capabilities

Swappable batteries

Enterprise-grade security and management

Wi-Fi voice challenges

Ruggedness

Shared devices

Enterprise-level maintenance

# The Savviest Purpose-Built Enterprise Smartphone

SLEEK, SLIM & LIGHT

INDUSTRY SAVVY

PURPOSE-BUILT

ENTERPRISE CAPABLE &  
FORTIFIED

HIGHEST QUALITY VOICE

LATEST TECHNOLOGIES

Versity

12:06

# Where do today's rugged smartphones fall short?

Bulky, heavy, brick-like

Wi-Fi voice challenges

VQO for 3rd party voice/video apps

TRUE hot swappable batteries

Third party interoperability

# There Are 4 Versity Smartphone Models

## 95-SERIES

### 9540

Streamlined design with slimmer profile

### 9553

Dedicated, built-in barcode scanner

## 96-SERIES (LTE)

### 9640

Streamlined design with slimmer profile

### 9653

Dedicated, built-in barcode scanner



## It's a leap ahead

- 21.58X Faster Processor
- 7mm Thinner than PIVOT:S
- 20% Lighter than PIVOT:SC
- 30% Larger Battery Capacity
- 1.68M More Pixels in the Display
- 4x more Memory
- 4x more Storage
- 3 generations of Android ahead



All while maintaining those things  
that make it a Spectralink Phone





## From the Creators of Apollo: Attributes we are most excited about.

Thinness

True Hot Swap Battery

Lighting Fast Bar Code Scanner

Grid Camera

Speed of Key Response

RFID

Fresh look of the Spectralink App User Interfaces and Cool New App Icons

Multi-Use Fingerprint Button on the Back of the Phone

Form Factor

WiFi Optimization

Advanced Audio and Noise Suppression

WiFi Voice Quality

*“This definitely exceeds my expectations of what I thought the DVT would be!”*

# ARTWORK

BACK PAINTED  
GLASS  
Light gray  
Screen print



POLISHED DEBOSS  
ALT: Ink filled deboss

# FRONT



BACK PAINTED  
GLASS  
Light gray  
Screen print

BACK



POLISHED DEBOSS  
ALT: ink filled deboss



## Sleek and rugged

### Sleeker, more consumer-like form factor

- 5.2" display
- Thinner and lighter than competitive devices

### Rugged enough to withstand tough environments

- IP68 – protects against dust ingress and even water submersion over 1 meter deep for more than 30 minutes
- Mil Spec 810 drop tested to withstand 78 1.5 meter drops onto steel plate







Ready to get  
the work done

Available Bar Code Scanner  
option

Enterprise device  
management solution  
provides full visibility to  
battery health



Fully Hot  
Swappable  
battery

Removable  
3000 mAh  
battery for  
long life





## Voice Quality Optimization (VQO) roaming for third-party voice/video

### Best in class voice quality

- Spectralink VQO for voice roaming on Wi-Fi networks
- Enhances third-party UC app voice/video over Wi-Fi





**Easier to use and to deploy**

**One touch provisioning**

**Support for multiple users per device**

**Single sign on (SSO) to partner applications**





## Latest technologies you expect

**Latest Android release  
certified for access to play  
store apps**

**Front and rear cameras**

**Bright, high-resolution  
display**





## And more...

**Fingerprint sign-on capable**

**NFC**

**RTLS Location**

**USB type C**



**LTE SKU (Sept)**

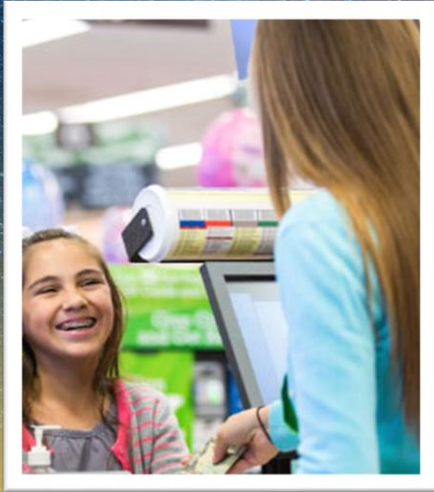






## Healthcare

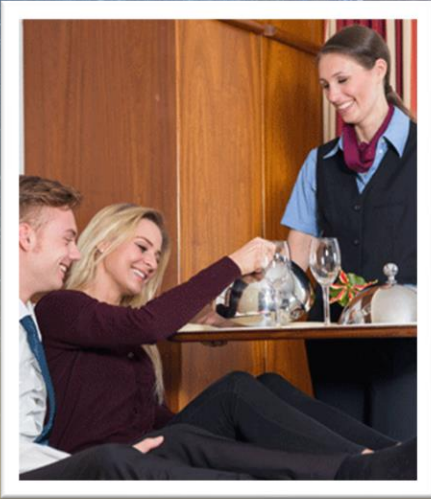
- Materials built to withstand hospital cleansers
- Barcode scanner
- Works with leading EHR, Nurse Call, Alarm and Secure Messaging solutions
- Easily share devices among users as shifts change
- Large high quality display for reviewing patient data
- Slim and light to easily carry the device throughout a shift
- SAFE function for lone workers
- Grab and go lets any worker use any phone



## Retail

- Barcode scanner
- Supports Bluetooth connection to POS card readers
- Supports leading inventory, logistics and store management applications
- Easy to use APIs for integration to existing in-house tools
- Rugged to stand up to drops on concrete floors
- Long life battery to get through an entire work day
- Grab and go lets any worker use any phone





## Hospitality

- Slim enough to carry discretely
- NFC to allow card key access via the phone only to employees that need it
- Integration into workflow tools and checklists
- Supports Bluetooth headsets
- Grab and go lets any worker use any phone



## Industrial

- Rugged – waterproof, dustproof and drop tested
- Works in loud environments
- Supports leading workflow management apps
- Audio and video conferencing makes communication easier
- Grab and go lets any worker use any phone





## Enterprise / SMB

- Integrated with the latest call server technologies
- Available LTE option for workers on the go
- Sleek and slim design appealing to many users
- Google certified for access the broadest range of applications
- Safe mode to support lone and remote workers
- Available drop in charger
- Grab and go lets any worker use any phone