



Stove Door Rope Seal Template

Start by measuring the width and depth of the channel

- Gently prise a section of the old seal out of the channel - just enough to be able to measure the width of the channel with a ruler. Measure across the channel in millimeters and record this measurement.

- If some adhesive residue is left in the channel, take an old screwdriver and carefully remove the adhesive until it is possible to measure how deep the channel is.

The depth of the channel can be measured by printing off this width/depth template

The template can be printed onto a thick sheet of paper or you can glue / tape the paper onto a piece of stiff card and then cut out the appropriate template for the width of the channel.

- Push the template into the channel and make sure it reaches the bottom. Use the rounded end if the channel is 'U' shaped, or the straight end if the channel has a flat bottom. With a pencil or pen mark the template where the top of the channel is. Remove the template and measure in millimeters from the rounded or flat base to the mark.

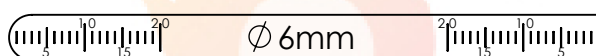
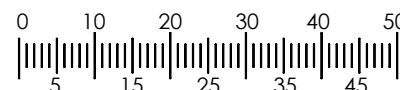
For example, if the channel is 12mm wide and 9mm deep then always choose the largest measurement. In this case it is likely that a 12mm diameter seal would be needed. However, in some cases, if a soft seal has been used, the seal may have started life as a 14mm diameter and would have been squeezed into a narrower channel.

So, it is always a good idea to closely examine the old seal. Some parts of the seal will probably be more worn than others. Try to choose a section that doesn't look too bad.

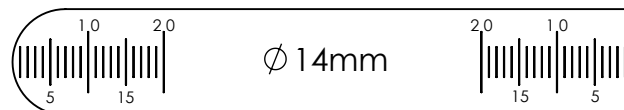
If the old seal can be molded back to a circular shape then place a ruler across it and see how wide it looks to be. This information along with your measurements of the channel should give you a very good indication of what size to order.

Note: Before printing this template sheet, please ensure the printer is set to page scaling 'none'.

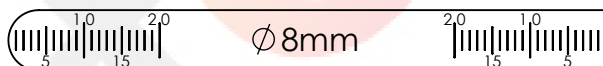
Measure the scale bar, (right), to verify that the gauges have printed to the correct size



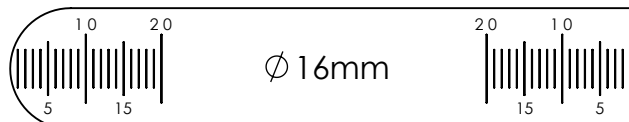
Ø 6mm



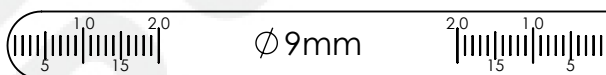
Ø 14mm



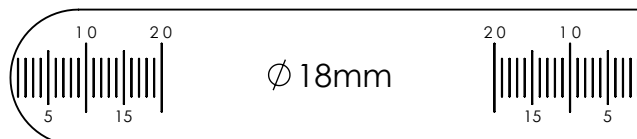
Ø 8mm



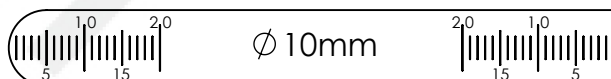
Ø 16mm



Ø 9mm



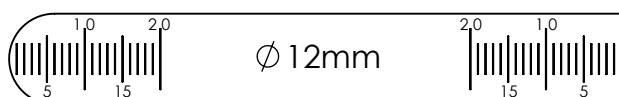
Ø 18mm



Ø 10mm



Ø 20mm



Ø 12mm