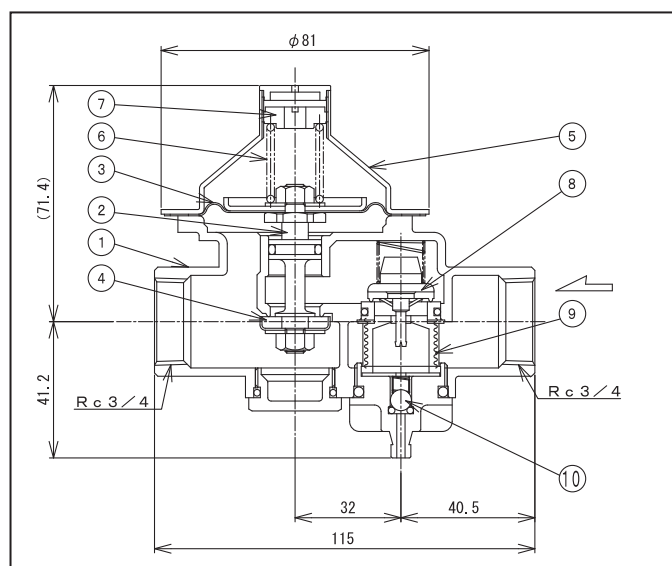


BRONZE VALVES

Pressure Reducing Valve : Model KRME/KRME-H



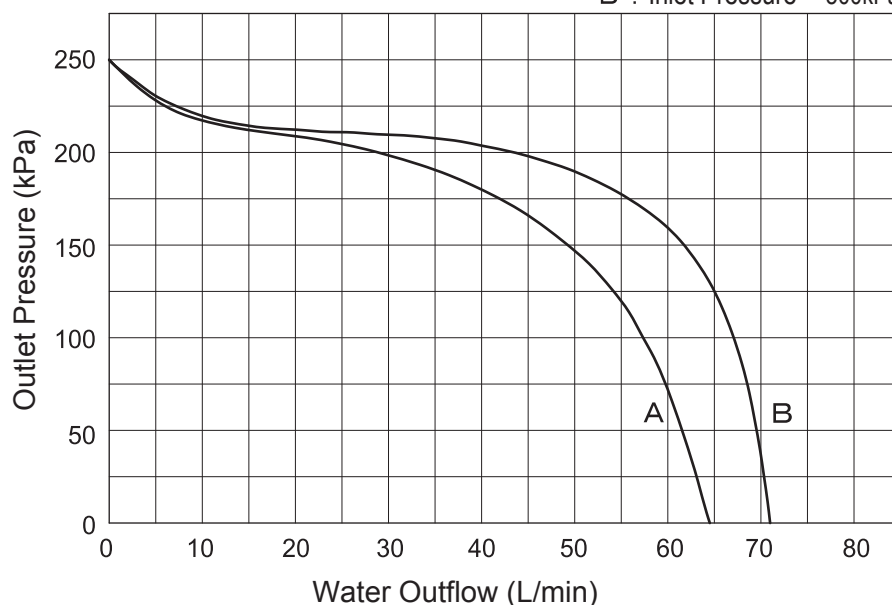
●Materials:

No.	Description	Material
1	Body	Bronze
2	Spindle	Brass
3	Diaphragm	NBR
4	Disc	NBR
5	Cover	Carbon Steel
6	Spring	Steel Wire Piano
7	Adjusting Screw	Brass
8	Check Valve	Synthetic Rubber
9	Strainer	Synthetic Rubber Stainless Steel
10	Vacuum Breaker Valve	Stainless Steel

● Flow Characteristics:

A : Inlet Pressure 300kPa

B : Inlet Pressure 500kPa



ISO9001 Certified

Japanese Industrial Standard Permitted Factory
Japan Water Works Association Authorized Factory

KANE KOGYO Co., Ltd.

Head office and factory : 2036 Okusa, Komaki-shi, Aichi-ken 485-0802 Japan

TEL : 81-568-79-2476 FAX : 81-568-79-6422

Web site: <http://www.kkkvalve.jp>

E-mail: overseasales@kkkvalve.jp