



Ambiance



Luxury Vinyl Tiles

durability with elegance

Retail ◊ Commercial ◊ Residential

Quality Flooring

Ambiance Vinyl Flooring company provide a vast range of high quality flooring services for retail, commercial and residential customers across the UK.



We combine quality flooring materials and products with professionalism and first class customer service.

Our unique designs and satin finish ensure that Ambiance flooring offers outstanding aesthetics. Its versatility means that it can be

easily matched with all types of fixtures and fittings.

Our flooring is elegantly finished and easy to maintain after fitting. By offering a wide range of colours and styles, we can guarantee you the sophisticated look and durable practicality you require.



Vinyl Flooring

Our range of vinyl includes products which have the appearance of a huge variety of materials including wood, stone, ceramic and metal.

Hard-wearing

All our vinyl flooring is incredibly hard-wearing and will provide you with many years of trouble free satisfaction and enjoyment.

Natural Look

Vinyl flooring is ideal when you want the aesthetic benefits of natural products, but at a much lower cost in terms of materials, fitting and maintenance.

Custom Fitting

Naturally, we can provide an installation service backed up by many years of experience in all manner of locations.

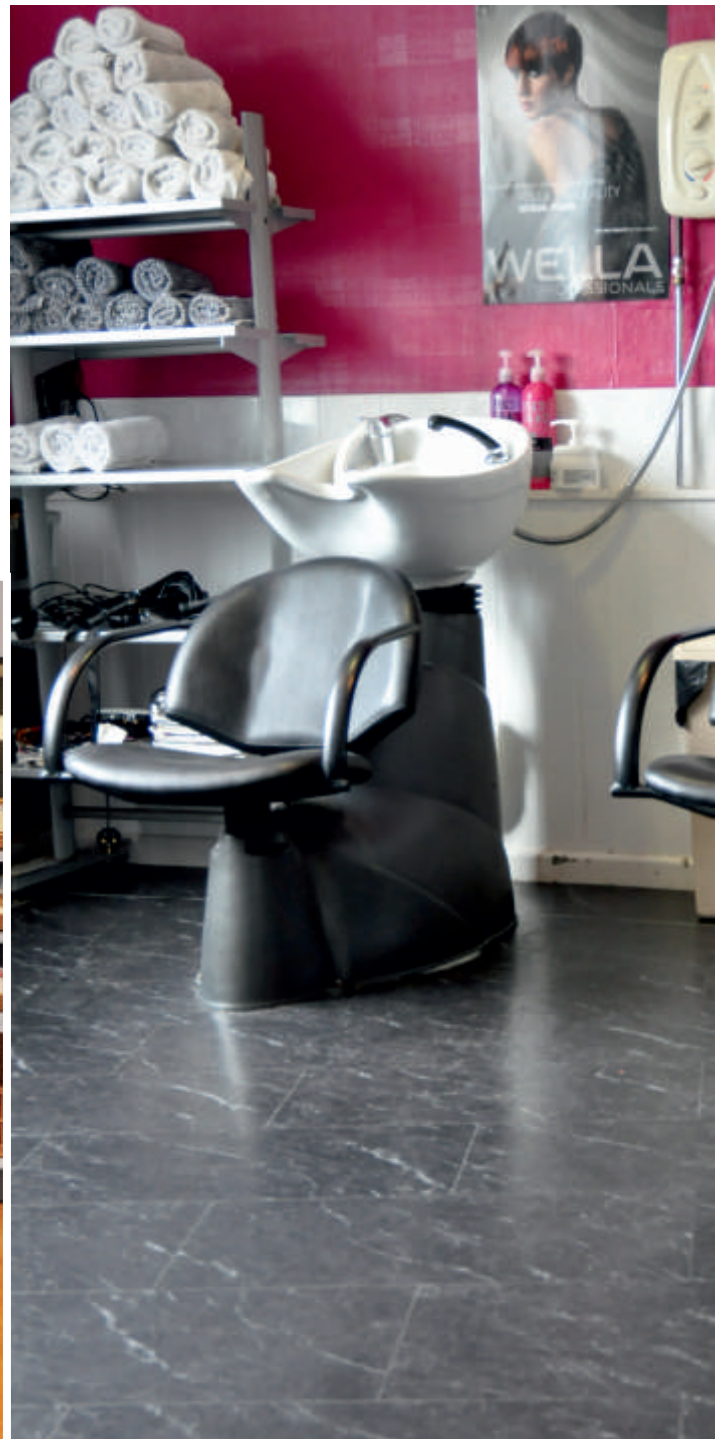


Retail ◊ Commercial ◊ Residential

**manufactured to exacting
standards ensuring the
highest quality product**

Ambiance flooring is manufactured to exacting standards ensuring that the product is of the highest quality.

Our flooring has an overall thickness of 3mm and consists of an easy to clean, 0.7mm polyurethane coated wear layer, a very high quality design film and a compact backing. This combination gives Ambiance flooring optimum resilience and durability for residential, retail and commercial installations.

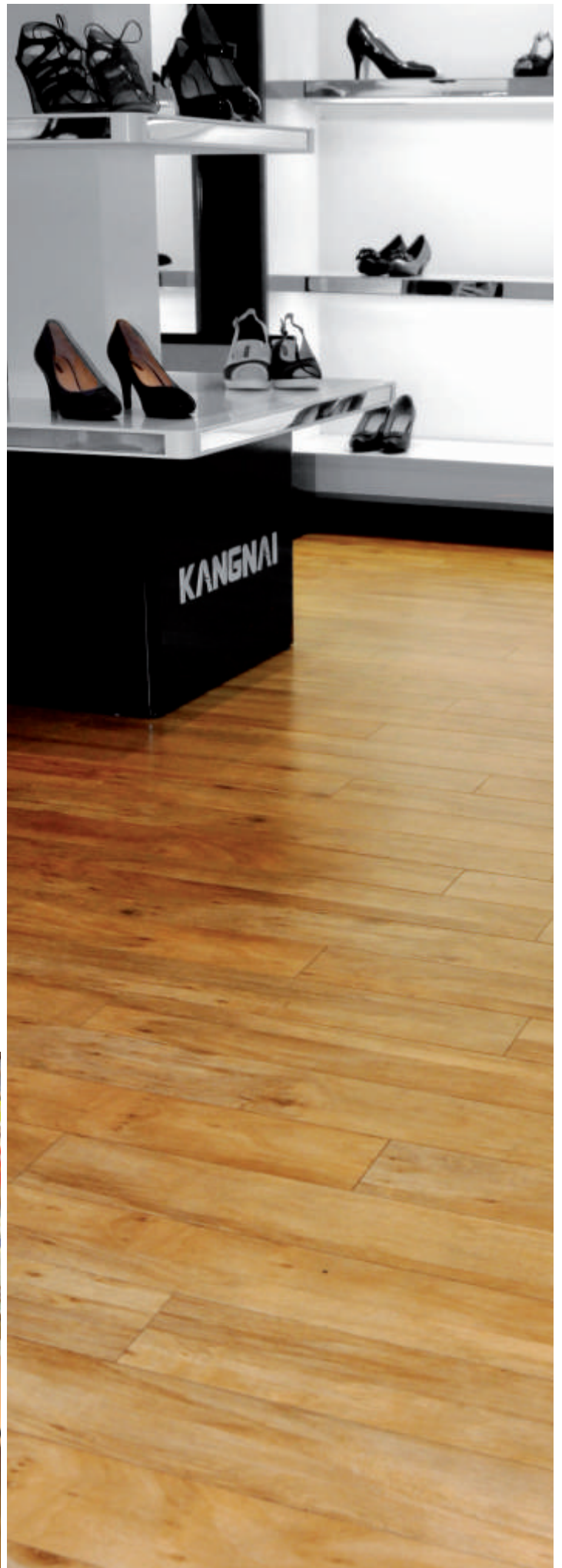




Retail ◀ Commercial ▶ Residential

**sophisticated
and timeless...**





Ambiance flooring reproduces all of the character and warmth of natural wood flooring without the impracticalities such as splinters and draughts, and the need for sanding, staining and polishing. To maintain its elegant look of classic modernity, simply clean the flooring with water and light detergent.





Retail ◊ Commercial ◊ Residential

**all the character and
warmth of natural
wood flooring...**





Hand Scraped Collection



Arden Oak

915x152mm (36" x 6")



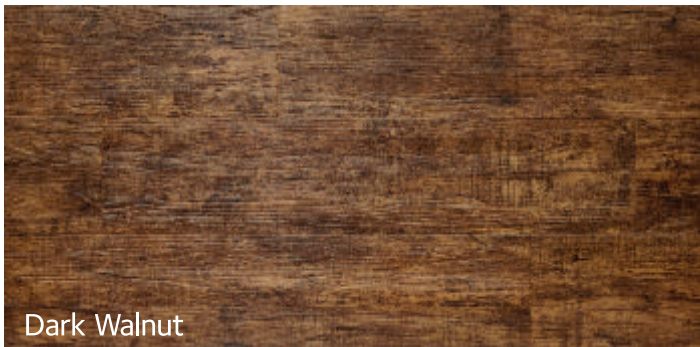
Bayern Oak

915x152mm (36"x6")



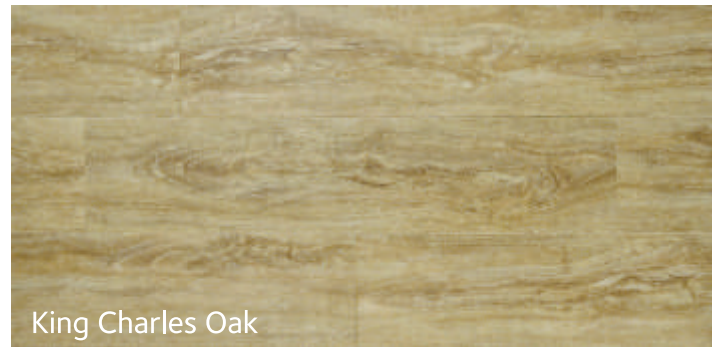
Church Oak

915x152mm (36"x6")



Dark Walnut

915x152mm (36"x6")



King Charles Oak

915x152mm (36"x6")

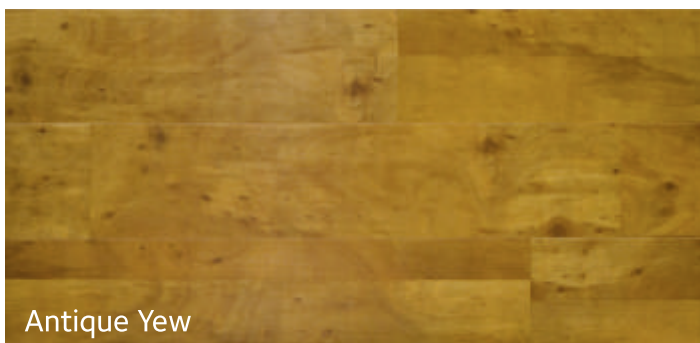
Thickness 3mm. Wear Layer 0.7mm. Polyurethane Coated / Bevelled Edges.

Tick Finish Collection



Alder

915x102mm (36"x4")



Antique Yew


915x102mm (36"x4")



Chestnut


915x102mm (36"x4")

Deep Emboss Collection



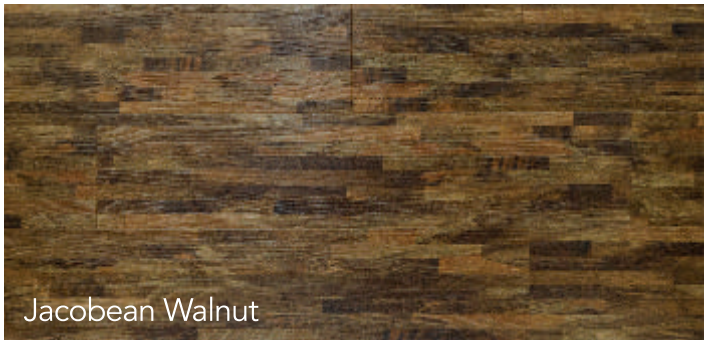
American Walnut

915x152mm (36"x6")



Jacobean Ash

915x152mm (36"x6")



Jacobean Walnut

915x152mm (36"x6") / 457x457mm (18"x18")



Laurentia Oak

915x152mm (36"x6")




New England Oak

915x152mm (36"x6")




Oak

915x152mm (36"x6") / 457x457mm (18"x18")



Picardy

915x152mm (36"x6")



Rustic Oak

915x152mm (36"x6")



Silver Oak

915x152mm (36"x6")



Sutta Oak

915x152mm (36"x6") / 457x457mm (18"x18")



White Oak

915x152mm (36"x6")



Forest

915x152mm (36"x6")

Thickness 3mm. Wear Layer 0.7mm. Polyurethane Coated / Bevelled Edges.

Feature Strips



Dark Walnut



Oak



Silver Nickel



Roman Slate



Copper



Silver



Concrete



Black



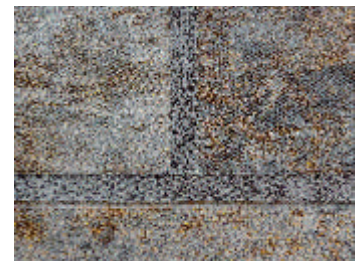
Concrete



Roman Slate



Silver



Silver Nickel

Thickness 3mm. Wide 5mm. Polyurethane Coated.

Stone & Granite Collection



Capri Rustic

457x457mm (18"x18")



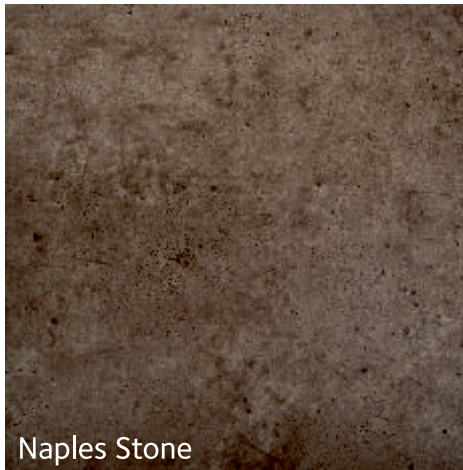
Erimi Granite

457x457mm (18"x18")



Dolomite Ice

457x457mm (18"x18")



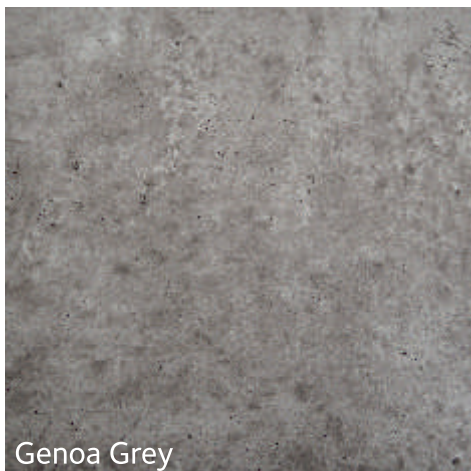
Naples Stone

457x457mm (18"x18")



Ravello Concrete

457x457mm (18"x18")



Genoa Grey

457x457mm (18"x18")

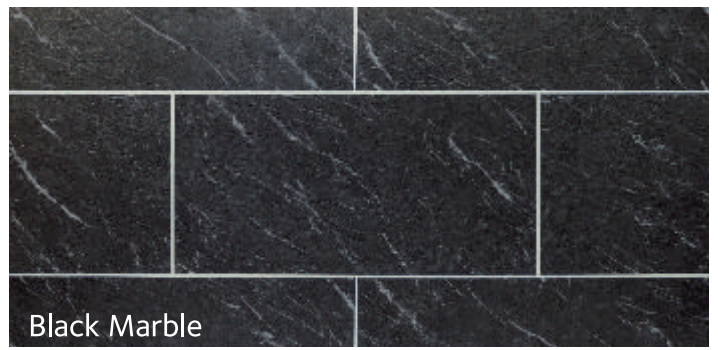


Milan Mocha

457x457mm (18"x18")

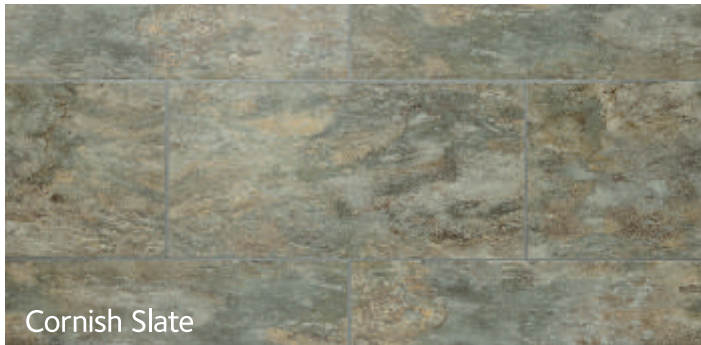
Thickness 3mm. Wear Layer 0.7mm. Polyurethane Coated / Bevelled Edges.

Shale Finish Slate Collection



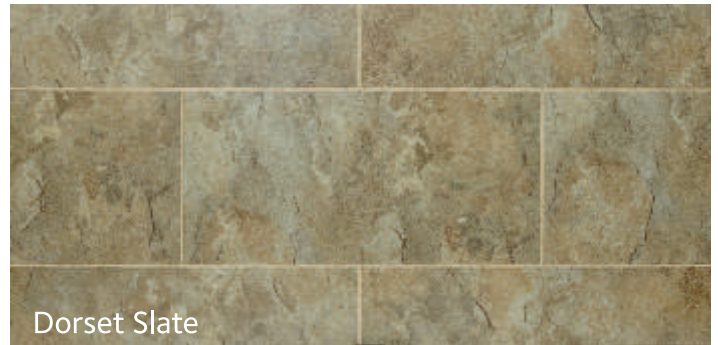
Black Marble

305x610mm (12"x24")



Cornish Slate

305x610mm (12"x24")



Dorset Slate

305x610mm (12"x24")



Element

305x610mm (12"x24")



Honey Travertine

305x610mm (12"x24")



Silver Nickel

305x615mm (12"x24")



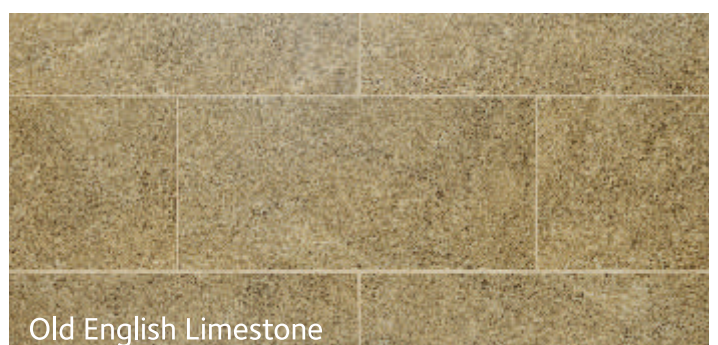
Volcanic Slate

305x610mm (12"x24")



Metallic Iron

305x610mm (12"x24")



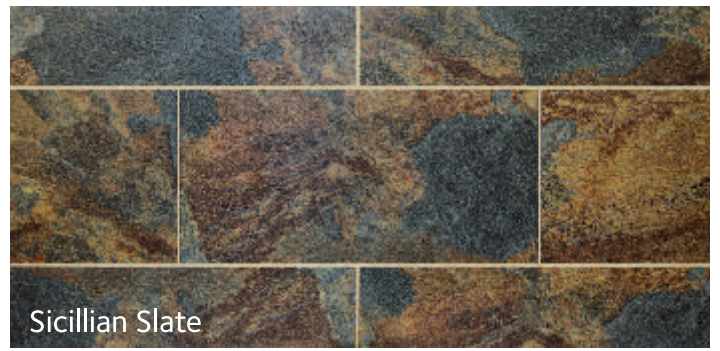
Old English Limestone

305x610mm (12"x24")



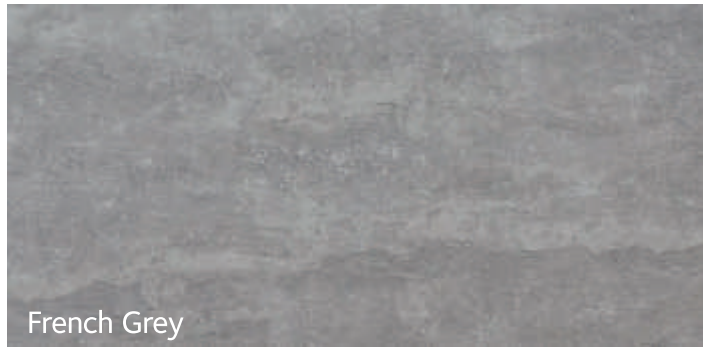
Roman Slate

305x610mm (12"x24")



Sicillian Slate

305x610mm (12"x24")



French Grey

305x610mm (12"x24")



Welsh Slate

305x610mm (12"x24")

Thickness 3mm. Wear Layer 0.7mm. Polyurethane Coated / Bevelled Edges.

Photograph shows Welsh Slate Flooring



Technical Information

Test	Standard / Norm	Result
Light Staium	ISO 105 B02	6. or above
Residual Indentation	EN 433	Pass
Abrasion Resistance	EN 660 - 2 volume loss	6.94 mm ³ /100r
Tensile Strength		Up to 1450 lbs/sq inch
Wear Group Classification (1.00mm)	EN 649	Class 33, 42
Castor Chair Resistance	EN 425	Pass
Slip Resistance	ASTM C - 1828 ADA	Pass
Sound Reduction	DIN 52210	4db
Heat Resistance	ASTM F 1514	Pass
Thermal Conductivity		0.186 Watts/mic
Electric Resistance	EN 1081 - Method C	Pass
Flammability	GB/T11785 - 89/ASTM E648	≥ 0.45 watt/CM ² - Class 1
Curling after exposure to heat	EN 434	Pass
Smoke Density	DIN 4102/ASTM D2843-99	Class B1
Dimension	EN 427	Pass
Dimensional Stability	EN 434	Pass
Overall Thickness	EN 428	Pass

Product Information

Thickness 3mm. Wear Layer 0.7mm. Polyurethane Coated / Bevelled Edges.
Installation must be carried out in accordance with local standards such as BS CP 8203, DIN 18365

Recommended Adhesives - F Ball F44, F Ball F46, Thomsit K190, UZIN KE2000S

For direct sunlight, conservatories and wet areas: F Ball F48, Thomsit R710

Residential Use Guarantee 20 years

Please note that while we have taken great care to ensure all products and colours are represented accurately, the limitations of printing slight variations may occur with some of our products in this brochure. All reasonable care has been taken to ensure that the descriptions are accurate. However specifications may change.

For further technical or installation advice, please contact us



Unit 2, Falkland Close, Coventry CV4 8AU



02476 407000



sales@ambiancevinylflooring.co.uk



www.ambiancevinylflooring.co.uk