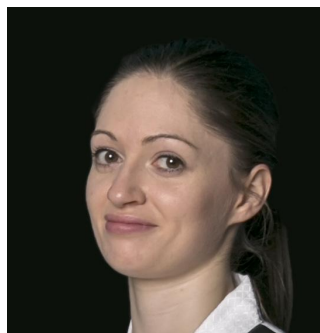


# P.U.M.A.

## Safeguarding Team



P.U.M.A.  
Safeguarding  
Code  
Of Practice



Ms Jenny Swain



Ms Freya Tinkler



Mr Dave Powlesland



Ms Sheila Hughes

### KEY CONTACTS

P.U.M.A. has a dedicated Safeguarding team in place. All members of the team are there for advice and support but please ensure all reporting is made to the current DSL.

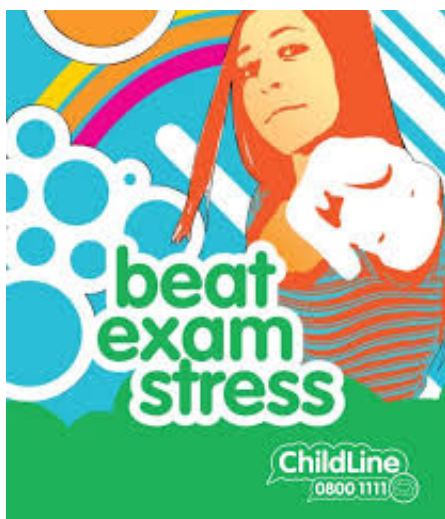


Ms Louise Reeve DSL

07866723631

[louy@cliftonandhenleazetkd.co.uk](mailto:louy@cliftonandhenleazetkd.co.uk)

- Ms Jenny Swain - IV Degree Black Belt, Instructor and School Owner, LP Instructor, SEN Teacher, PUMA Squad Member.
- Ms Freya Tinkler - II Degree Black Belt, GP Partner and, Educational Supervisor, Safeguarding lead for Tyntesfield Medical Group.
- Mr Dave Powlesland - IV Degree Black Belt, Instructor and School Owner, MIFireE and MISFM, F.A.S.T. Instructor.
- Ms Sheila Hughes - II Degree Black Belt , CQSW (Certificate of qualification in Social work, MBA, Area of expertise - Adult Safeguarding
- Ms Louise Reeve P.U.M.A. Designated Safeguard Lead - IV Degree Black Belt, Instructor and School Owner, F.A.S.T Instructor, Safeguarding trainer Level 3, BA Hons RGN RSCN (Ret)



## P.U.M.A. Safeguarding Code Of Practice

### KEY CONTACTS

The P.U.M.A. Safeguarding Team is here to help with questions, advice, support and suggestions to help with the day to day issues that may arise .

**Contact Ms Reeve on 07866723631**

**[louy@cliftonandhenleazetkd.co.uk](mailto:louy@cliftonandhenleazetkd.co.uk)**

If we can not help, we will try our best to source an organisation or individual who can.

There are a number of organisations to go for help, advice and general information.

Always have a record of your local police, fire, hospital, and social services.

Local numbers for these services should only be used to seek advice, for imminent danger always call 999.

Organisations like the NSPCC, Kidscape and Samaritans are useful numbers to have on record. There are many more. It is a good idea to spend 5 minute researching what is available in your area and keeping a record of helpful organisations that target particular age groups.

