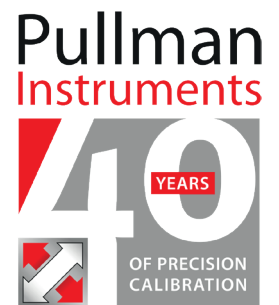


RAILWAYS

Calibration • Verification • Repair



Accredited Calibration services keeping the rail industry moving

At Pullman we specialise in the service and calibration of test equipment used throughout the rail industry, building on a reputation we have forged with Network Rail, many of the contractor's approved by Network Rail.



Our rail profile is vast, we have long standing relationships from rail operators to SME organizations that support the rail network. Our skill set covers the renewals, welding, signalling and vehicle maintenance sections of the rail industry, a knowledge that has been gained from over many years of working with the UK Rail industry.



Working with Pullman you will benefit from accredited equipment calibration and certification, reduced downtime, minimised turnaround and competitive pricing, keeping the workforce on track from a calibration service that you can rely on.

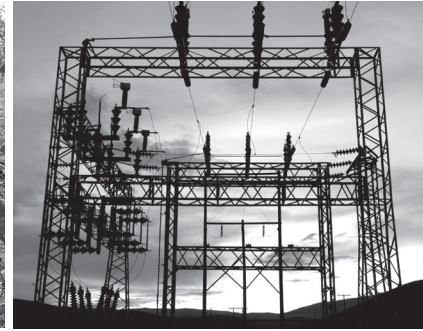
- Instrument Calibration to the Rail industry
- Repair of Measurement Instruments
- Accredited Quality Management Systems



PullmanInstruments

Specialists in Calibration & Measurement

Pullman in depth



Why Pullman?

With 40 years of experience offering a combination of industry expertise and a proven track record of listening to the needs of both customers and their brand partners.

Established as one of the UK's market leaders in the calibration and measurement industry, Pullman provide both in-house and on-site calibration services with dedicated professionals providing quick solutions to a wide range of industry sector test equipment requirements.

Quality Assurance

Pullman's success and reputation can be measured by the high standard of service we provide to our customers. Our Quality Management System meets with statutory and regulatory requirements. Accredited by UKAS to ISO/IEC 17025 and registered to ISO 9001 by NQA. Pullman Instruments achieve customer satisfaction through continued improvement.

Calibration Service

Our greatest core strength is the calibration service we offer. Precision to us matters and attention to detail is critical.

Pullman's highly skilled professional laboratories are located nationwide, ensuring a quick response to any calibration requirement.

Utilising the depth of experience we have we also provide the option of a dedicated on site calibration team.

This team are able to replicate many of our in-house disciplines at our customers' sites.

Repair

An approved repair centre for leading manufacturers, all instruments repaired in line with published procedures where available and using only approved parts when required. Ensuring manufacturers' high standards are met.

Key services we offer to our customers include:

- Free collection and delivery service
- 5 working day calibration service
- Additional fast turnaround services available on request
- While you wait drop in service
- On-site traceable and UKAS calibration (See UKAS.org for full scope)
- Embedded on-site services
- No charge for adjustment on units, and production of after adjustment certificate
- Calibration failure reports
- Managed calibration reminder service
- Full asset history of instrument for its whole working life
- On-line web-based customer portal

Railway Specific Calibration, verification, repair of:

- Frequency Selective Meter
- Sleeper Insulation Tester
- Flux Meter
- Top Level Gauge
- Phase Angle Meter

- TPWS Multimeter
- TPWS Aerial & Lead
- Crimping Tools
- Drop Shunt Boxes
- AC Earth Leakage Adaptor
- Profile Gauging
- 12, 24 & 48 way Insulation Straps
- HVI Integrators
- Track Geometry Testers
- Data Link Test Box
- Lightning Barrier Tester
- Block Joint Testers
- Push/Pull Testers
- dBm Meters
- Track Circuit Limiters

Other Instruments Pullman calibrate include:

- Insulation Testers (up to 5000V)
- Multimeters (Analogue & Digital)
- Bench Multimeters (up to 6½)
- RCD Testers
- Loop Testers
- Digital Thermometers
- Infrared Thermometers
- Thermal Imagers
- Clamp meters/multimeters
- Function Generators
- Micrometers, External & Internal
- Vernier Calipers
- Depth Micrometers
- Dial Gauges mechanical & Digital

To find out more about Pullman Instruments and our calibration services contact us or visit the website www.pullman.co.uk

AMETEK®

KERN®

FLUKE®

Megger®

METREL®

JOFRA calibration

KIMO®
INSTRUMENTS
A member of
sauermann

AMPROBE
HARD AT WORK SINCE 1948

digitron
ANALOGUE TECHNOLOGY

SAUTER

Pullman offices in your area:

North West

Tel: 01942 526164

Email: salesnw@pullman.co.uk

Central

Tel: 01908 568250

Email: salesc@pullman.co.uk

South West

Tel: 01934 424575

Email: southoffice@pullman.co.uk

Head Office: Pullman Instruments, Chatsworth House, 15 Chatsworth Terrace, Harrogate HG1 5HT

