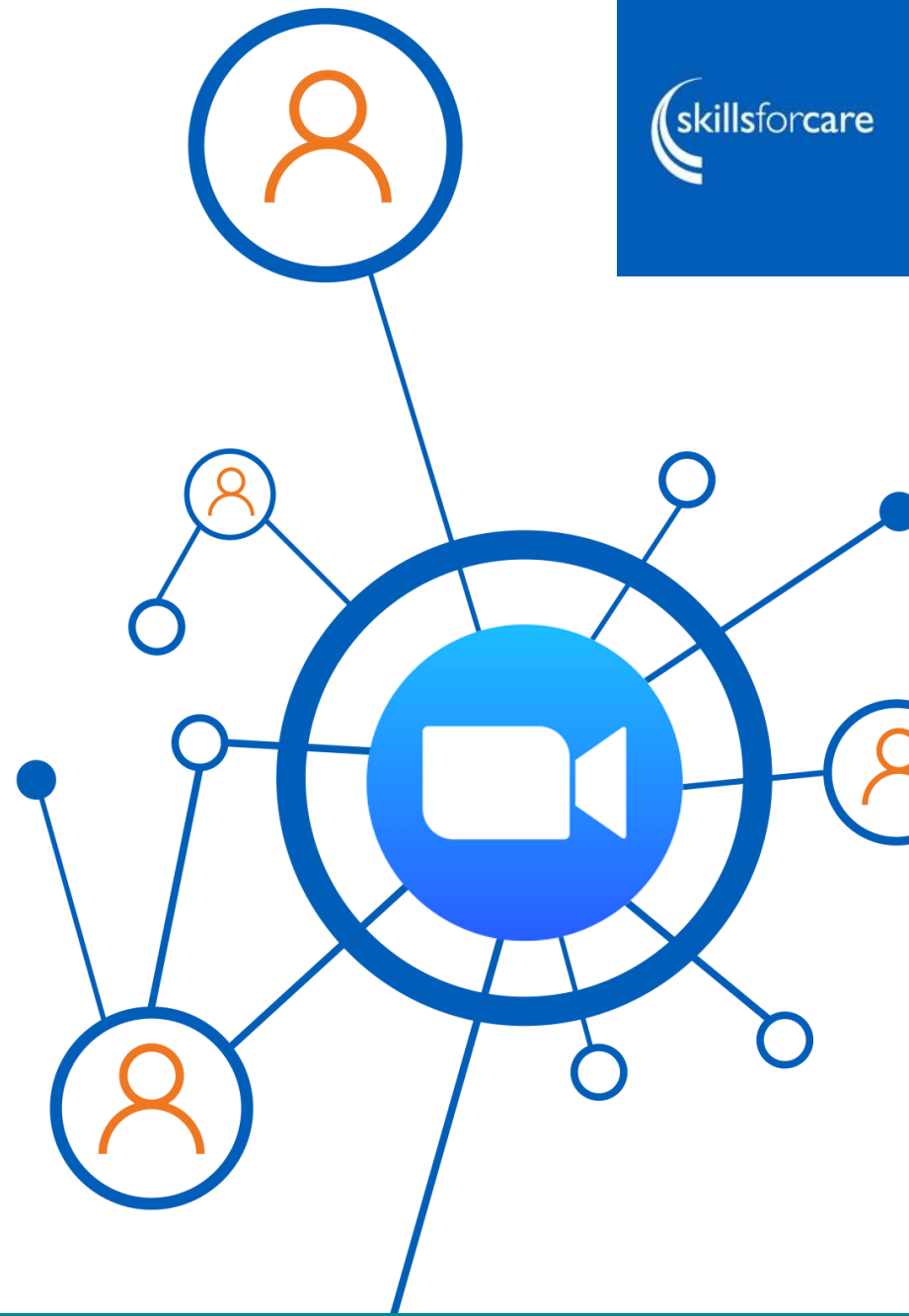


# Skills for Care update on support for Registered Managers

6<sup>th</sup> May 2020



# Join our Facebook group

**Staying connected with one another is an important way to look after yourselves and others during this time.**

- Get support from your peers.
- Share advice, experiences and guidance.
- Join a thriving community.

The Facebook logo, consisting of the word 'facebook' in white lowercase letters inside a blue rounded rectangle.

**facebook**



Search for **Registered Manager Members**

**[www.facebook.com/groups/registeredmanager](https://www.facebook.com/groups/registeredmanager)**



# WhatsApp

**Care and Support West have set up a WhatsApp group to stay in touch instead of the Face to Face RM Networks supported by Skills for Care. To join contact Mik Alban via:**

**<https://chat.whatsapp.com/ELCfFHZDcoXHan3eSKO8iO>**

As a registered manager in this very difficult time, I am so grateful to have my registered manager network WhatsApp group. I can seek advice, gain up-to-date knowledge and just simply know other managers are there for support whenever I need them.



---

**Vanessa Williams-Lukins, Kidsgrove Care Solutions**

# Webinars to support your service

Our new series of webinars have advice and guidance on a range of topics.

- Essential training
- Human Resources (HR)
- Attracting workers
- Using technology to support your staff and each other / the people you care for
- Keeping your team motivated



[www.skillsforcare.org.uk/COVID-19webinars](http://www.skillsforcare.org.uk/COVID-19webinars)

# New advice line

Do you manage CQC regulated adult social care services? Our new advice line and email inbox can support you.

We can help you to access Skills for Care:

- resources
- funding
- online learning
- latest guidance and advice.



Call  
**0113 241 1260**

Email  
**[RMAdvice@skillsforcare.org.uk](mailto:RMAdvice@skillsforcare.org.uk)**

# Safe and rapid recruitment

**Our guiding principles may be useful to address additional workforce recruitment challenges during this time.**

## **Support and resources on:**

- values-based recruiting
- recruiting from your local community
- ensuring you have robust employment checks
- training, sustaining and retaining staff.

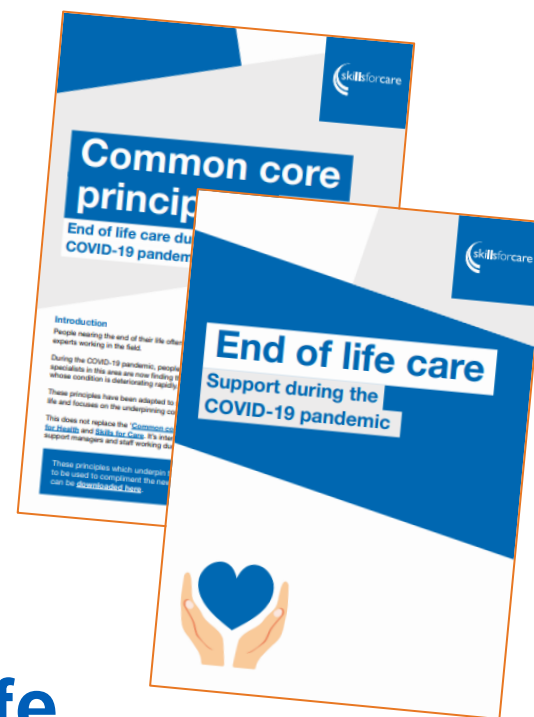


**[www.skillsforcare.org.uk/SafeAndRapid](http://www.skillsforcare.org.uk/SafeAndRapid)**

# End of life care during COVID-19

People working in care who may not be specialists in this area are finding themselves working with people who are dying, or whose condition is deteriorating rapidly. We have resources to support you.

- The **Common core principles** have been adapted to support people working with adults at the end of their life and focuses on the underpinning competences, knowledge and values needed.
- The **'End of life care support'** supplement uses the principles in practice, with key points to note and useful end of life care COVID-19 links for further information.



[www.skillsforcare.org.uk/EndofLife](http://www.skillsforcare.org.uk/EndofLife)

# Nurse deployment update

**The NHS Capacity Tracker has been updated to include questions on workforce needs and is now live.**

If you need to access deployed nurses, you must **register on and fill in the Capacity Tracker**. This information is fed into the existing regional hubs and used in their nurse deployment decision making process, which is already functioning for the NHS.

Once you've done this, please email [\*\*C-19nursedeployment@skillsforcare.org.uk\*\*](mailto:C-19nursedeployment@skillsforcare.org.uk) and include further details of your nurse workforce needs to help in deploying the right staff.

For the most up-to-date information visit [\*\*www.skillsforcare.org.uk/NurseDeployment\*\*](http://www.skillsforcare.org.uk/NurseDeployment)

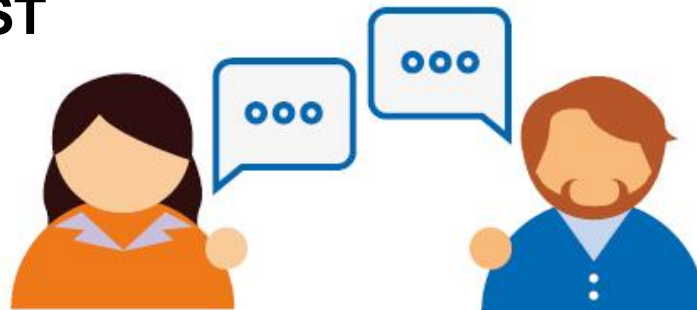


# Tell us your story

Share the outstanding work of your workforce - this could be best practice, innovation or evidence of the vital role of social care.

Stories (**max 200 words**) can be sent to [marketing@skillsforcare.org.uk](mailto:marketing@skillsforcare.org.uk) and **MUST** include the following:

- organisation/service name
- location.



They can also be shared on social media by joining our good news Twitter campaign. Share a short video of your good news story using **#socialcareisvital** and **@skillsforcare**