

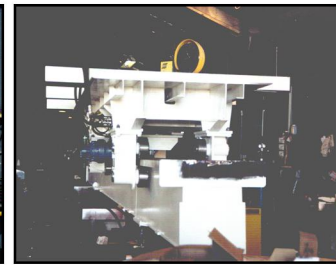
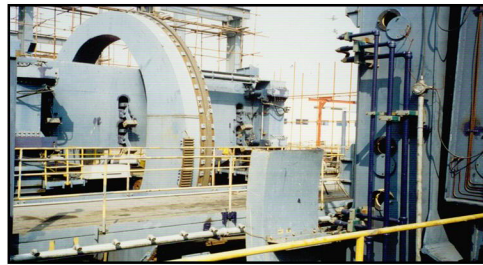
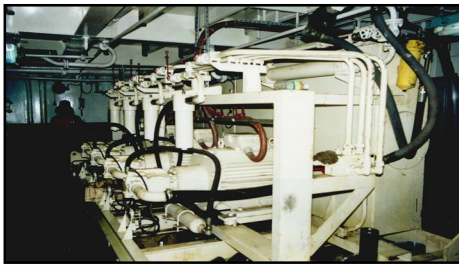
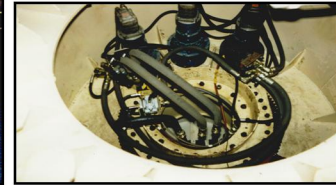


MARINE AND OFFSHORE HANDLING SYSTEMS

EFFECT Engineering Projects

Effective Engineering Solutions

www.effect-eng.com



DESCRIPTION: Marine and Offshore Handling Systems

INDUSTRY: Shipping, Offshore, Drilling, Mining and Commercial

APPLICATION: EFFECT Engineering Projects are sole agent for Romica Engineering Ltd UK for the Australasia region for their winches, handling systems and hydraulic power systems.

OPTIONS: See Romica Engineering Ltd UK website for details. www.romica.co.uk

FEATURES: EFFECT in association with Romica can offer winches for use in any of the above stated industry sectors and/or as part of complete Marine and Offshore handling, lifting and towing system packages, from the design and manufacture of winches, handling systems, hydraulic power systems with the in-house capability to develop the project specification, produce the concept and detail, design, manufacture, integrate, commission and test complete mechanical, hydraulic, electrical and electronic systems. EFFECT Engineering Projects management and staff have over 30 years experience in industry dependent on hydraulic power and project manage both large and small projects.

CONTACT: EFFECT Engineering Projects Pty Ltd
40 Morgan Street
Cannington WA 6107
Australia
TEL: 61 8 9258 9441
FAX: 61 8 9258 9442
EMAIL: effect@effect-eng.com

