

MACROBIN[®] 12 AND 14 SERIES

With smooth surfaces and a shallow interior depth of only 12 inches, the **MacroBin 12 and 14 Series** are designed to pamper your delicate fruits and vegetables.



12-FV

The MacroBin 12-FV has a rectangular footprint and four-way entry for convenience when shipping in refrigerated trucks.

Feature Highlights

- **Rounded corners and smooth surfaces** mean fewer scuffs, abrasions and cuts on your tender fruits. Risk of contamination is reduced because there are fewer places for unwanted particles to hide.
- **Multiple ventilation slots** in sides and base facilitate the use of thermofogging, reduce heat absorption, and help your products cool down quicker in the hydro-cooler.
- **FDA-approved materials** are certified safe for use with food products, eliminating many HACCP problems associated with wood bins.
- **Splinter-resistant plastic** delivers reduced maintenance costs, fewer injuries to workers, and less damage to your product. Bin repairs are inexpensive with hot air welding.
- **Nonporous surfaces** won't absorb water or dehydrate your product like wood bins, and they provide a constant tare weight throughout their use.
- **Easy-to-sanitize** MacroBins reduce cleaning costs. A high-pressure wash removes most debris; a non-abrasive brush can dislodge any remaining items.
- **Lightweight construction** reduces shipping costs and makes MacroBins easier to move; the direct load corner posts and interlocking foot design make them safer to stack — up to 12 high.*
- **Smart MacroBins** utilize securely-attached RFID tags to deliver improved tracking and traceability options.



14-FV

The MacroBin 14-FV has runner-style feet and two-way entry on a virtually square footprint.

* See reverse for maximum stack weight specifications.



Macro Plastics
INCORPORATED

Benefits of Using MacroBins



Increased productivity.
Lightweight MacroBins are easy to handle, move and transport; these MacroBins are compatible with most conveyors and other bin handling equipment.



Reduced cooling costs.
Hundreds of vents in sides and base promote air flow to help your products cool down quicker.



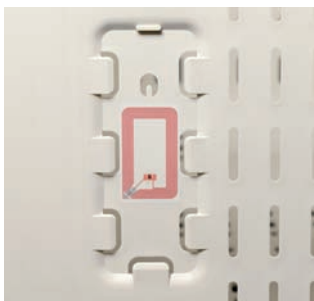
Reduced bin repair costs.
MacroBins are virtually maintenance free; repairs are easy with hot air welding.



Better sanitation and reduced contamination.
Smooth, nonporous surfaces are easy to sanitize and won't trap debris, breed bacteria, or absorb chemicals like wood bins.



Improved pack out.
Rounded corners and smooth surfaces mean fewer scuffs, abrasions and cuts on your product.



Improved traceability and bin security.
Several identification methods including RFID tags and attractive foil embossing are available.

Specifications for the MacroBin 12-FV

Load Capacity:	500 pounds
Volume Capacity:	21,500 cubic inches
Tare Weight:	58.5 pounds (short foot) 59.5 pounds (long foot)
Maximum Stack Weight ¹ :	7,000 pounds (short term, ambient temperature)
Molding Process:	High-pressure injection molding
Material:	Copolymer Polypropylene, U.V. stabilized
Approval:	FDA-regulated material
Container Design:	Double wall corner post
Foot Design:	Two full-length, runner-style feet with positive interlocking foot design
Ventilation Slots:	1 9/16" (L) x 3/16" (W) in sides and base Multiple air vents located in side panels and base to facilitate air flow; rounded surface on interior edges of slots
Fork Lift Entry:	Four-way with patented integral slide-entry; foot side 2 1/2" opening, non-foot side 3 1/8" opening
Label Holders:	Two
External Dimensions:	45" (L) x 48" (W) x 16 1/2" (H)
Internal Dimensions:	42 1/4" (L) x 45 1/4" (W) x 12" (H)
OPTIONS:	<ul style="list-style-type: none"> ■ Foot orientation: two full-length on the short side ■ Four label holders ■ Front and rear foil embossing ■ Customer identification with RFID tags or foil embossing

Specifications for the MacroBin 14-FV

Similar to 12-FV except:

Volume Capacity:	22,700 cubic inches
Tare Weight:	58.5 pounds
Ventilation Slots:	1 9/16" (L) x 3/16" (W) in sides 1 5/16" (L) x 3/16" (W) in base
Fork Lift Entry:	Two-way: 3 1/8" opening with patented integral slide-entry
Label Areas:	Two
External Dimensions:	47 3/4" (L) x 47" (W) x 16 1/2" (H)
Internal Dimensions:	45 1/4" (L) x 44 3/4" (W) x 12" (H)

Notes: Dimensions assume tolerance of 1/8". Volume capacities assume tolerance of 5% and tare weights assume a tolerance of 4% unless noted otherwise. Ambient temperature approximately equal to 75° F. Data is subject to change.

¹ Stack Weight = (weight of bin contents + tare weight of bin) X number of bins in stack

Please refer to the MacroBin User Guide for information on the safe transportation, stacking and handling of MacroBins. The User Guide in PDF format is available online at www.macroplastics.com or call us at 1-800-845-6555.



Macro Plastics
INCORPORATED

CORPORATE HEADQUARTERS:

2250 Huntington Drive
Fairfield, CA 94533
phone 800/845-6555
fax 707/437-1201
e-mail: info@macroplastics.com
www.macroplastics.com