

CONTEMPORARY



Door Furniture and Accessories | Other Door Accessories and Fittings
Hinges | Cabinet Hardware | Alphabet, Numerals and Door Signs

PRODUCT GUARANTEE INFORMATION

Delf Architectural provides a 5 year limited mechanical guarantee on all products. Note - this guarantee does not apply to the plated and/ or lacquered finish of any of our products.



For further information on our guarantee please refer to the Delf Architectural website: www.delfarchitectural.com.au

NON-STANDARD FINISHES

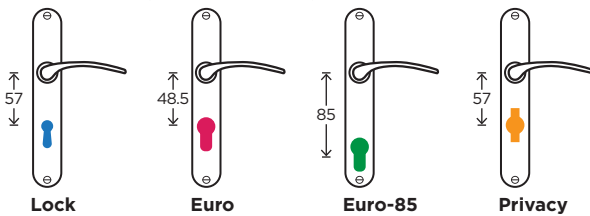
Non-standard or special request finishes can be provided on most Delf Architectural products - a surcharge applies.

KEY HOLE PUNCHING

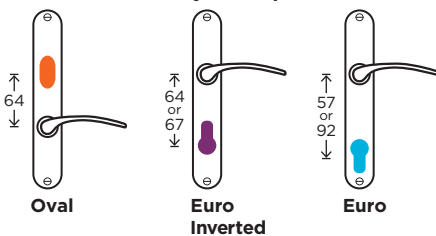
Non-standard or special request hole punching may be subject to an extra charge.

KEY HOLE AND PRIVACY OPTIONS

Standard Key Hole and Privacy Options



Non-Standard Key Hole Options



PRODUCT UPDATES

For product updates, product care, technical information and installation instructions (where applicable), please refer to the Delf Architectural website: www.delfarchitectural.com.au

DISCLAIMER

This catalogue may contain typographical errors, inaccuracies, or omissions that may relate to product descriptions, colours and product numbers. Delf Architectural reserves the right to correct any errors, inaccuracies or omissions and to change or update information at any time without prior notice.

Due to continuous product development, some products may vary from that shown and due to the printing process, colours may vary from those shown in the catalogue. Delf Architectural recommends that you consult Delf or its distributors prior to purchase to ensure accuracy of information. Delf Architectural will not be held liable for any injury, loss or damage resulting from information contained in this document.

CONTENTS

- 2 Door Furniture and Accessories**
 - 2 Lever on Square Rose, Escutcheons, Privacy Assemblies
 - 4 Lever on Round Rose, Escutcheons, Privacy Assemblies
 - 6 Lever on Long Plate
 - 8-9 Stainless Steel Door Pulls
 - 9 Stainless Steel Door Pushes

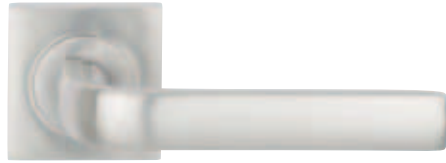
- 10 Other Door Accessories and Fittings**
 - 10-11 Stainless Steel Sliding Door Privacy Sets and Assemblies
Sliding Door Flush Pull Sets and Accessories
 - 12 Sliding Door Privacy Sets, Flush Pull Sets, Stainless Steel Flush Pulls
 - 13 Sliding Door Closers
 - 14 Door Stops
 - 15 Magnetic Latches

- 16 Hinges**
 - 16 Stainless Steel Hinges

- 18 Cabinet Hardware**
 - 18 Cabinet Pull Handles
 - 20 Cabinet Knobs, Cabinet Flush Pulls

- 22 Alphabet, Numerals and Door Signs**
 - 22 Stainless Steel Alphabet, Numerals, Door Signs

- 25 Numerical Index**



Lever Handle Set
PH530



Lever Handle Set
PH540



Lever Handle Set
PH570



Lever Handle Set
PH575



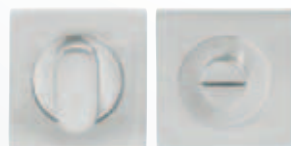
Lever Handle Set
PH580



Euro Escutcheon
PH590*



Oval Escutcheon
PH591*



**Privacy Emergency
Assembly**
PH595



Privacy Turnbutton Set
PH595A

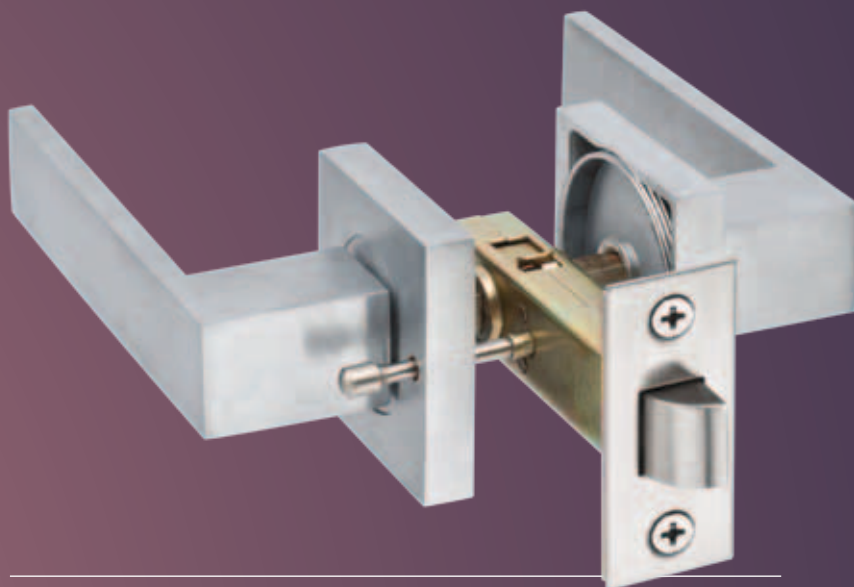


Privacy Set
PH594

*sold as a pair

DOOR FURNITURE AND ACCESSORIES
**LEVER ON SQUARE ROSE
 ESCUTCHEONS
 PRIVACY ASSEMBLIES**

Code	Description	L	H	W	ØR	Proj	CP	PB	SCP	SN
PH530	Lever Handle Set	118			50/50	55	•	•	•	
PH540	Lever Handle Set	120			50/50	71	•	•	•	
PH570	Lever Handle Set	136			50/50	49	•	•	•	•
PH575	Lever Handle Set	118			50/50	65	•	•	•	
PH580	Lever Handle Set	133			50/50	52	•	•	•	
PH590	Euro Escutcheon		50	50		10	•	•	•	•
PH591	Oval Escutcheon		50	50		10	•	•	•	•
PH594	Privacy Set		47	23		6/20	•	•	•	•
PH595	Privacy Emergency Assembly		50	50		9/25	•	•	•	•
PH595A	Privacy Turnbutton Set		50	50		9/25	•	•	•	•



Privacy on Rose

PH Lever on Square Rose Door Furniture can be converted to Privacy on Rose using TLPRIV Privacy Latch (Privacy Latches sold as separate item)

TABLE KEY: all measurements in mm

L: Length **H:** Height **W:** Width **ØR:** Diameter Rose **Proj:** Projection **CP:** Chrome Plate **PB:** Polished Brass
SCP: Satin Chrome Plate **SN:** Satin Nickel



Lever Handle Set
PH091



Lever Handle Set
PH881



Lever Handle Set
PH585



Lever Handle Set
PH035



Lever Handle Set
PH532



Lever Handle Set
PH533



Lever Handle Set
PH955



Lever Handle Set
PH596



Privacy Emergency Assembly
PH001



Blind Escutcheon
PH997



Oval Escutcheon
PH998*



Euro Escutcheon
PH999*



Privacy Turnbutton Set
PH001A

*sold as a single item

DOOR FURNITURE AND ACCESSORIES
**LEVER ON ROUND ROSE
 ESCUTCHEONS
 PRIVACY ASSEMBLIES**

Code	Description	L	Ø	ØR	Proj	CP	PB	SCP
PH001	Privacy Emergency Assembly			43	8/25	•	•	•
PH001A	Privacy Turnbutton Set			43	8/25	•	•	•
PH035	Lever Handle Set	130		50	55	•	•	•
PH091	Lever Handle Set	135		50	55			•
PH532	Lever Handle Set	135		50	60	•	•	•
PH533	Lever Handle Set	135		50	65	•	•	•
PH585	Lever Handle Set	118		50	65	•	•	•
PH596	Lever Handle Set	138		50	63	•	•	•
PH881	Lever Handle Set	145		50	55	•	•	•
PH955	Lever Handle Set	135		50	55	•	•	•
PH997	Blind Escutcheon		58		9.8	•	•	•
PH998	Oval Escutcheon		50		9.8	•	•	•
PH999	Euro Escutcheon		50		9.8	•	•	•



Privacy on Rose

PH Lever on Round Rose Door Furniture can be converted to Privacy on Rose using either a TLPRIV or TLP60 Privacy Latch (Privacy Latches sold as separate item)

TABLE KEY: all measurements in mm

L: Length **Ø:** Diameter **ØR:** Diameter Rose **Proj:** Projection **CP:** Chrome Plate **PB:** Polished Brass
SCP: Satin Chrome Plate



Passage Set
PH039PB PH043SCP
PH047CP

🔑 Privacy option available
(refer to inside front cover)



Lock Set
PH040PB PH044SCP
PH048CP



**Euro Lever Lock
48.5mm Centre**
PH041PB PH045SCP
PH049CP



**Euro Lever Lock
85mm Centre**
PH042PB PH046SCP
PH050CP

EXCELLENCE IN BOTH *offering* AND QUALITY



Passage Set
PH053SCP PH057CP

🔑 Privacy option available
(refer to inside front cover)



Lock Set
PH054SCP PH058CP



**Euro Lever Lock
48.5mm Centre**
PH055SCP PH059CP



**Euro Lever Lock
85mm Centre**
PH056SCP PH060CP

DOOR FURNITURE AND ACCESSORIES

LEVER ON LONG PLATE

All PH lever on long plate door furniture is supplied with external blind through fix and face fix screws.

Code	Description	L	H	W	Proj	CP	PB	SCP
PH039PB	Passage Set	130	222	31	48		•	
PH043SCP	Passage Set	130	222	31	48			•
PH047CP	Passage Set	130	222	31	48	•		
PH040PB	Lock Set	130	222	31	48		•	
PH044SCP	Lock Set	130	222	31	48			•
PH048CP	Lock Set	130	222	31	48	•		
PH041PB	Euro Lever Lock - 48.5mm Centre	130	222	31	48		•	
PH045SCP	Euro Lever Lock - 48.5mm Centre	130	222	31	48			•
PH049CP	Euro Lever Lock - 48.5mm Centre	130	222	31	48	•		
PH042PB	Euro Lever Lock - 85mm Centre	130	222	31	48		•	
PH046SCP	Euro Lever Lock - 85mm Centre	130	222	31	48			•
PH050CP	Euro Lever Lock - 85mm Centre	130	222	31	48	•		
PH053SCP	Passage Set	118	189	31	65			•
PH057CP	Passage Set	118	189	31	65	•		
PH054SCP	Lock Set	118	189	31	65			•
PH058CP	Lock Set	118	189	31	65	•		
PH055SCP	Euro Lever Lock - 48.5mm Centre	118	189	31	65			•
PH059CP	Euro Lever Lock - 48.5mm Centre	118	189	31	65	•		
PH056SCP	Euro Lever Lock - 85mm Centre	118	189	31	65			•
PH060CP	Euro Lever Lock - 85mm Centre	118	189	31	65	•		



TABLE KEY: all measurements in mm

L: Length **H:** Height **W:** Width **Proj:** Projection **CP:** Chrome Plate **PB:** Polished Brass **SCP:** Satin Chrome Plate



Pull Handle
PH257-600 (P or S)
Order as Pair (P)
or Single (S)



Pull Handle
PH265-600 (P or S)
Order as Pair (P)
or Single (S)



Pull Handle
PH285-600 (P or S)
Order as Pair (P)
or Single (S)



Pull Handle
PH286-600 (P or S)
PH286-1000 (P or S)
Order as Pair (P)
or Single (S)
2 Sizes



Pull Handle
PH259-600 (P or S)
Order as Pair (P) or Single (S)



Pull Handle
PH261-450 (P or S)
Order as Pair (P) or Single (S)



Pull Handle
PH263-300 (P or S)
Order as Pair (P) or Single (S)

DOOR FURNITURE AND ACCESSORIES

STAINLESS STEEL DOOR PULLS STAINLESS STEEL DOOR PUSHES

Stainless Steel Pulls and Pushes available in Satin finish (SS) or Polished finish (PSS).

Code	Description	L	W	Ø	CC	Proj	SS	PSS
PH257-600 (P or S)	Pull Handle - Pair or Single	600	24		562	80	•	•
PH259-600 (P or S)	Pull Handle - Pair or Single	600		30	450	80	•	•
PH261-450 (P or S)	Pull Handle - Pair or Single	470		20	450	70	•	•
PH263-300 (P or S)	Pull Handle - Pair or Single	330		30	300	80	•	•
PH265-600 (P or S)	Pull Handle - Pair or Single	600		30	570	80	•	•
PH267	Pull Handle on Plate	300	100				•	•
PH269	Pull Handle on Plate	300	75				•	•
PH271	Pull Handle on Plate	300	65				•	•
PH268	Push Plate	300	100				•	•
PH270	Push Plate	300	75				•	•
PH272	Push Plate	300	65				•	•
PH285-600 (P or S)	Pull Handle - Pair or Single	600	25		426	70	•	•
PH286-600 (P or S)	Pull Handle - Pair or Single	600	40		580	62	•	•
PH286-1000 (P or S)	Pull Handle - Pair or Single	1000	40		980	62	•	•



Pull Handle on Plate

PH267 PH269 PH271
3 Sizes

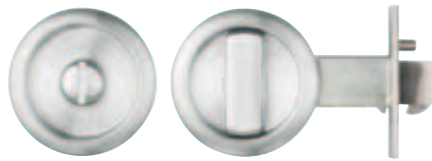


Push Plate

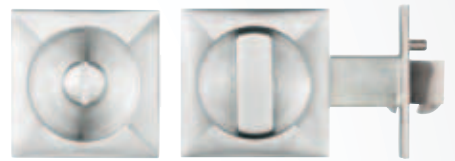
PH268 PH270 PH272
3 Sizes

TABLE KEY: all measurements in mm

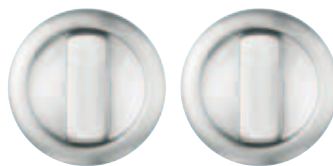
L: Length **W:** Width **Ø:** Diameter **CC:** Centre to Centre **Proj:** Projection **SS:** Stainless Steel
PSS: Polished Stainless Steel



Sliding Door Privacy Set - Complete
70200
Includes Privacy Latch 2414 and Finger Pull 70206



Sliding Door Privacy Set - Complete
70201
Includes Privacy Latch 2414 and Finger Pull 70206



Recessed Double Turn Assembly
70202
Suits Hinged or Sliding Doors



Recessed Double Turn Assembly
70203
Suits Hinged or Sliding Doors



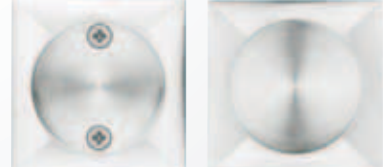
Recessed Privacy Assembly
70204
Suits Hinged or Sliding Doors



Recessed Privacy Assembly
70205
Suits Hinged or Sliding Doors



Flush Pull Set Through Fix
70200A



Flush Pull Set Through Fix
70201A

OTHER DOOR ACCESSORIES AND FITTINGS

STAINLESS STEEL

**SLIDING DOOR PRIVACY SETS
AND ASSEMBLIES**

**SLIDING DOOR FLUSH PULL SETS
AND ACCESSORIES**

Code	Description	H	W	ØI	ØE	BS	CS	CP	SCP	SS	PSS
2414	Sliding Door Privacy Latch					60	76	•	•		
70200	Sliding Door Privacy Set - Complete			45	58					•	•
70200A	Flush Pull Set Through Fix			45	58					•	•
70201	Sliding Door Privacy Set - Complete	58	58	45						•	•
70201A	Flush Pull Set Through Fix	58	58	45						•	•
70202	Recessed Double Turn Assembly			45	58					•	•
70203	Recessed Double Turn Assembly	58	58	45						•	•
70204	Recessed Privacy Assembly			45	58					•	•
70205	Recessed Privacy Assembly	58	58	45						•	•
70206	Sliding Door Finger Pull	57	25							•	•



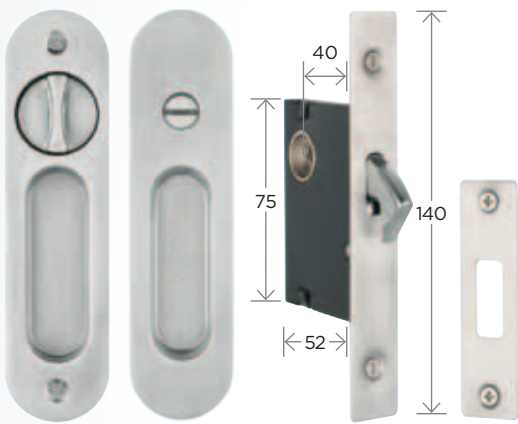
**Sliding Door
Finger Pull**
70206



Sliding Door Privacy Latch
2414
Available as a separate item

TABLE KEY: all measurements in mm

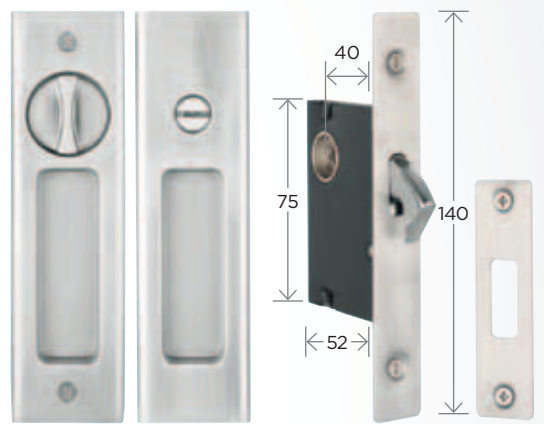
H: Height **W:** Width **ØI:** Diameter Internal **ØE:** Diameter External **BS:** Backset **CS:** Case Size
CP: Chrome Plate **SCP:** Satin Chrome Plate **SS:** Stainless Steel **PSS:** Polished Stainless Steel



Sliding Door Privacy Set - Round Edge
70183SN 70184NP 70185SCP



**Circular Flush Pull
Concealed Fix**
FP001 FPP001



Sliding Door Privacy Set - Square Edge
70186SN 70187NP 70188SCP 70190PB



Flush Pull Set - Round Edge
70193SN 70194NP 70195SCP



**Flush Pull
Concealed Fix**
FP003 FP005
FP006 FP007
4 Sizes



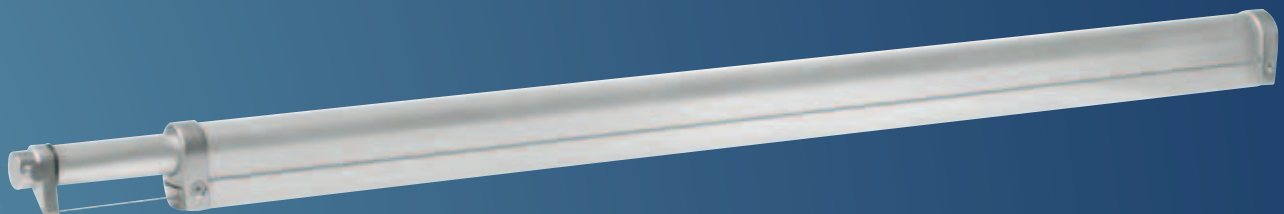
**Flush Pull
Concealed Fix**
FPP003 FPP005
FPP006 FPP007
4 Sizes



Flush Pull Set - Square Edge
70196SN 70197NP 70198SCP

OTHER DOOR ACCESSORIES AND FITTINGS
SLIDING DOOR PRIVACY SETS
FLUSH PULL SETS
STAINLESS STEEL FLUSH PULLS
SLIDING DOOR CLOSERS

Code	Description	H	W	Ø	Proj	NP	PB	SCP	SN	SS	PSS
FP001	Circular Flush Pull Concealed Fix			65/50						•	
FPP001	Circular Flush Pull Concealed Fix			65/50							•
FP003	Flush Pull Concealed Fix	100	50							•	
FPP003	Flush Pull Concealed Fix	100	50								•
FP005	Flush Pull Concealed Fix	125	50							•	
FPP005	Flush Pull Concealed Fix	125	50								•
FP006	Flush Pull Concealed Fix	150	50							•	
FPP006	Flush Pull Concealed Fix	150	50								•
FP007	Flush Pull Concealed Fix	200	70							•	
FPP007	Flush Pull Concealed Fix	200	70								•
70183SN	Sliding Door Privacy Set - Round Edge	160	40						•		
70184NP	Sliding Door Privacy Set - Round Edge	160	40			•					
70185SCP	Sliding Door Privacy Set - Round Edge	160	40					•			
70186SN	Sliding Door Privacy Set - Square Edge	160	45						•		
70187NP	Sliding Door Privacy Set - Square Edge	160	45			•					
70188SCP	Sliding Door Privacy Set - Square Edge	160	45					•			
70190PB	Sliding Door Privacy Set - Square Edge	160	45				•				
70193SN	Flush Pull Set - Round Edge	160	40						•		
70194NP	Flush Pull Set - Round Edge	160	40			•					
70195SCP	Flush Pull Set - Round Edge	160	40					•			
70196SN	Flush Pull Set - Square Edge	160	45						•		
70197NP	Flush Pull Set - Square Edge	160	45			•					
70198SCP	Flush Pull Set - Square Edge	160	45					•			
PH70076	Sliding Door Closer		860		30			•			
PH70077	Sliding Door Closer		1040		30			•			



Sliding Door Closer

PH70076 PH70077

2 Sizes

TABLE KEY: all measurements in mm

H: Height **W:** Width **Ø:** Diameter **Proj:** Projection **NP:** Nickel Plate **PB:** Polished Brass **SCP:** Satin Chrome Plate
SN: Satin Nickel **SS:** Stainless Steel **PSS:** Polished Stainless Steel



IT IS OFTEN
THE SMALLER
FITTINGS IN A HOME
Creating
THE BIGGER PICTURE
OF A HOME THAT
IS ALL ABOUT
Class and Style



**Universal Magnetic
Door Stop Anodised**
DS005



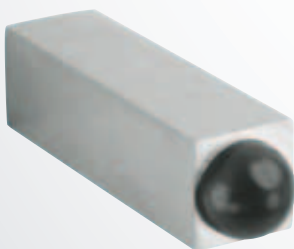
**Universal Magnetic
Door Stop**
DS004



**Universal Magnetic
Door Stop Adjustable**
DS003 DS003P



**Foot Operated
Door Stop**
PH7458



Square Door Stop
DS006 DS006P



Door Stop
DS008



Square Door Stop
DS007 DS007P



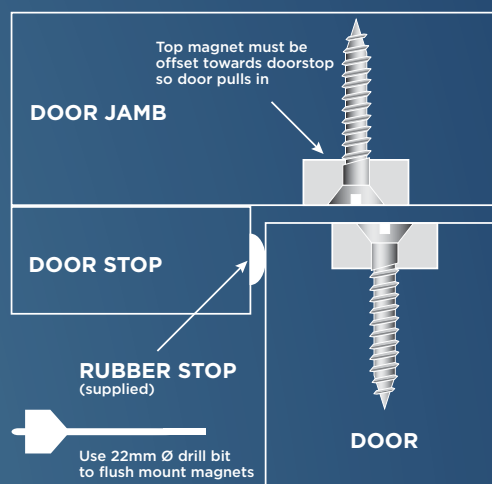
**Hemisphere
Door Stop**
DS001



OTHER DOOR ACCESSORIES AND FITTINGS

DOOR STOPS
MAGNETIC LATCHES

Code	Description	H	W	Ø	Proj	CP	SCP	SS	PSS
DS001	Hemisphere Door Stop	25		44				•	
DS003	Universal Magnetic Door Stop Adjustable			35/24	95/110		•		
DS003P	Universal Magnetic Door Stop Adjustable			35/24	95/110	•			
DS004	Universal Magnetic Door Stop			50/25	75/10		•		
DS005	Universal Magnetic Door Stop			30	65/20		•		
DS006	Square Door Stop		22		85			•	
DS006P	Square Door Stop		22		85				•
DS007	Square Door Stop	45	22		35			•	
DS007P	Square Door Stop	45	22		35				•
DS008	Door Stop		19	50	100			•	
PH7458	Foot Operated Door Stop	165	30		30	•	•		
70189	Concealed Magnetic Latch	8		22					

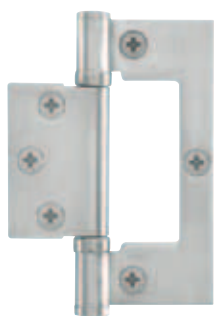


Concealed Magnetic Latch

70189

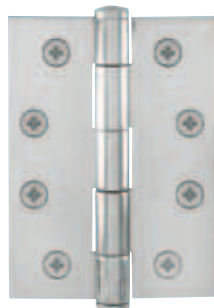
TABLE KEY: all measurements in mm

H: Height **W:** Width **Ø:** Diameter **Proj:** Projection **CP:** Chrome Plate **SCP:** Satin Chrome Plate
SS: Stainless Steel **PSS:** Polished Stainless Steel



Ball Bearing Button Tip Interfold Hinge
 HH2543F* HH2543L†

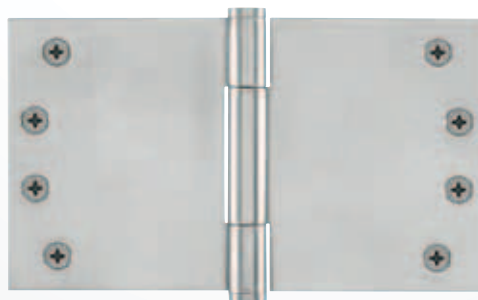
IT IS OFTEN THE SMALLER FITTINGS IN A HOME
Creating
 THE BIGGER PICTURE OF A HOME THAT IS ALL ABOUT
Class and Style



Button Tip Hinge
 PN2543F* PPN2543F*



Button Tip Hinge
 PN2544F* PN2544L†



Broad Butt Hinge
 PN3045F* PN3046F* PN3047F* PN3048F*
 4 Sizes

*F: Fixed Pin †L: Loose Pin

HINGES

STAINLESS STEEL HINGES

Code	Description	H	W	TK	SS	PSS
HH2543 (F or L)	Ball Bearing Button Tip Interfold Hinge - Fixed or Loose Pin	100	73	2.3	•	
PN2543F	Button Tip Hinge	100	75	2.5	•	
PPN2543F	Button Tip Hinge	100	75	2.5		•
PN2544 (F or L)	Button Tip Hinge - Fixed or Loose Pin	100	100	2.5	•	
PN3045F	Broad Butt Hinge	100	125	3	•	
PN3046F	Broad Butt Hinge	100	150	3	•	
PN3047F	Broad Butt Hinge	100	175	3	•	
PN3048F	Broad Butt Hinge	100	200	3	•	

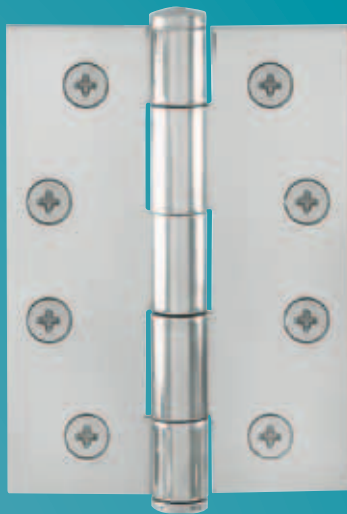


TABLE KEY: all measurements in mm
H: Height **W:** Width **TK:** Thickness **SS:** Stainless Steel **PSS:** Polished Stainless Steel



Profile Pull Handle

PH283464 PH283496 PH2834128

3 Sizes



Underside profile view



Profile Pull Handle

PH4400396 PH44003128 PH44003160 PH44003192

PH44003224 PH44003256 PH44003288

7 Sizes



Underside profile view



Cabinet Pull Handle

PH381096 PH381128 PH381160 PH381240 PH381288

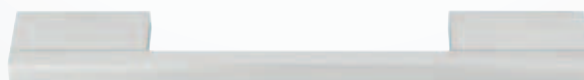
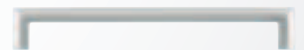
5 Sizes



Cabinet Pull Handle

PH458096 PH458128 PH458160 PH458224 PH458288

5 Sizes

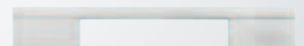


Cabinet Pull Handle

PH4523128 PH4523160 PH4523192 PH4523224 PH4523256

PH4523288

6 Sizes





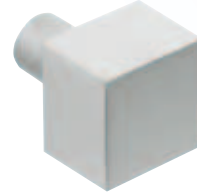
CABINET HARDWARE CABINET PULL HANDLES

Code	Description	CC	BN	CP	SCP
PH283464	Profile Pull Handle	64		•	•
PH283496	Profile Pull Handle	96		•	•
PH2834128	Profile Pull Handle	128		•	•
PH381096	Cabinet Pull Handle	96	•	•	•
PH381128	Cabinet Pull Handle	128	•	•	•
PH381160	Cabinet Pull Handle	160	•	•	•
PH381240	Cabinet Pull Handle	240	•	•	•
PH381288	Cabinet Pull Handle	288	•	•	•
PH4400396	Profile Pull Handle	96		•	
PH44003128	Profile Pull Handle	128		•	
PH44003160	Profile Pull Handle	160		•	
PH44003192	Profile Pull Handle	192		•	
PH44003224	Profile Pull Handle	224		•	
PH44003256	Profile Pull Handle	256		•	
PH44003288	Profile Pull Handle	288		•	
PH4523128	Cabinet Pull Handle	128		•	•
PH4523160	Cabinet Pull Handle	160		•	•
PH4523192	Cabinet Pull Handle	192		•	•
PH4523224	Cabinet Pull Handle	224		•	•
PH4523256	Cabinet Pull Handle	256		•	•
PH4523288	Cabinet Pull Handle	288		•	•
PH458096	Cabinet Pull Handle	96	•	•	•
PH458128	Cabinet Pull Handle	128	•	•	•
PH458160	Cabinet Pull Handle	160	•	•	•
PH458224	Cabinet Pull Handle	224	•	•	•
PH458288	Cabinet Pull Handle	288	•	•	•

TABLE KEY: all measurements in mm

CC: Centre to Centre **BN:** Brushed Nickel **CP:** Chrome Plate **SCP:** Satin Chrome Plate

FRESH
INNOVATION IN
Contemporary
HARDWARE
FOR YOUR HOME



Square Knob on Post
PH29720 PH29725
2 Sizes



Square Knob
PH29620 PH29625
2 Sizes



Square Knob
PH298254



Round Flush Pull
PH2459340 PH2459346
2 Sizes



Square Flush Pull
PH2459240 PH2459246
2 Sizes



Cupboard Knob
9581 9582 9583 9584
4 Sizes

CABINET HARDWARE
CABINET KNOBS
CABINET FLUSH PULLS

Code	Description	H	W	Ø	Proj	BN	CP	PB	SCP
9581	Cupboard Knob			20	20		•	•	•
9582	Cupboard Knob			25	28		•	•	•
9583	Cupboard Knob			32	35		•	•	•
9584	Cupboard Knob			38	42			•	
PH29620	Square Knob	20	20		30	•	•		•
PH29625	Square Knob	25	25		30	•	•		•
PH29720	Square Knob on Post	20	20		30	•	•		•
PH29725	Square Knob on Post	25	25		35	•	•		•
PH298254	Square Knob	25.4	25.4		25.4	•	•		•
PH2459240	Square Flush Pull	40	40		10		•		•
PH2459246	Square Flush Pull	46	46		10		•		•
PH2459340	Round Flush Pull			40	10		•		•
PH2459346	Round Flush Pull			50	10		•		•

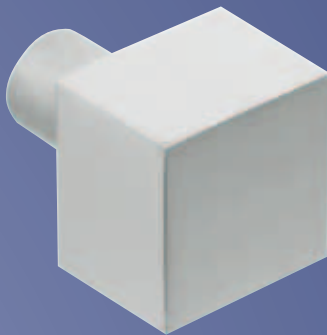


TABLE KEY: all measurements in mm

H: Height **W:** Width **Ø:** Diameter **Proj:** Projection **BN:** Brushed Nickel **CP:** Chrome Plate **PB:** Polished Brass
SCP: Satin Chrome Plate



ABCD

Stainless Steel Alphabet A-D
130mm

Self Adhesive **SSA130(A-D)** SS only
Rear Fix on Post **SS130(A-D)** SS
Rear Fix on Post **SSP130(A-D)** PSS

65mm

Self Adhesive **SSA65(A-D)** SS only
Rear Fix on Post **SS65(A-D)** SS
Rear Fix on Post **SSP65(A-D)** PSS

Stainless Steel Hyphen
50mm

Self Adhesive **SSA65**
SS only
Rear Fix on Post **SSP65**
PSS only

Stainless Steel Hyphen
100mm

Self Adhesive **SSA130**
SS only
Rear Fix on Post **SSP130**
PSS only

0123456789

Stainless Steel Numerals 0-9
130mm

Self Adhesive **SSA130(0-9)** SS only
Rear Fix on Post **SS130(0-9)** SS
Rear Fix on Post **SSP130(0-9)** PSS

65mm

Self Adhesive **SSA65(0-9)** SS only
Rear Fix on Post **SS65(0-9)** SS
Rear Fix on Post **SSP65(0-9)** PSS



Braille Washroom Sign
Men's - Self Adhesive
BBA001



Braille Washroom Sign
Ladies' - Self Adhesive
BBA002



Braille Washroom Sign
Public - Self Adhesive
BBA003



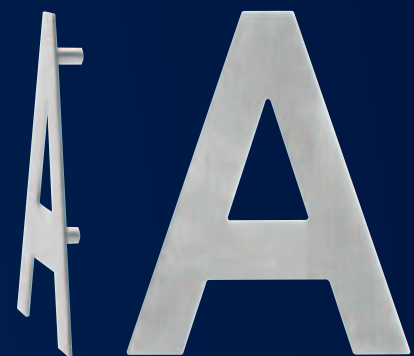
Braille Washroom Sign
Disabled - Self Adhesive
BBA006

ALPHABET, NUMERALS AND DOOR SIGNS

STAINLESS STEEL

**ALPHABET
NUMERALS
DOOR SIGNS**

Code	Description	H	W	SS	PSS
BBA001	Braille Washroom Sign: Men's - Self Adhesive	145	145	•	
BBA002	Braille Washroom Sign: Ladies' - Self Adhesive	145	145	•	
BBA003	Braille Washroom Sign: Public - Self Adhesive	145	145	•	
BBA006	Braille Washroom Sign: Disabled - Self Adhesive	145	145	•	
SSA65	Stainless Steel Hyphen - Self Adhesive	10	50	•	
SSA65(A-D)	Stainless Steel Alphabet A-D - Self Adhesive	65		•	
SSA65(0-9)	Stainless Steel Numeral 0-9 - Self Adhesive	65		•	
SSA130	Stainless Steel Hyphen - Self Adhesive	20	100	•	
SSP130	Stainless Steel Hyphen - Rear Fix on Post	20	100		•
SSA130(A-D)	Stainless Steel Alphabet A-D - Self Adhesive	130		•	
SSA130(0-9)	Stainless Steel Numeral 0-9 - Self Adhesive	130		•	
SSP65	Stainless Steel Hyphen - Rear Fix on Post	10	50		•
SS65(A-D)	Stainless Steel Alphabet A-D - Rear Fix on Post	65		•	
SSP65(A-D)	Stainless Steel Alphabet A-D - Rear Fix on Post	65			•
SS130(A-D)	Stainless Steel Alphabet A-D - Rear Fix on Post	130		•	
SSP130(A-D)	Stainless Steel Alphabet A-D - Rear Fix on Post	130			•
SS65(0-9)	Stainless Steel Numeral A-D - Rear Fix on Post	65		•	
SSP65(0-9)	Stainless Steel Numeral 0-9 - Rear Fix on Post	65			•
SS130(0-9)	Stainless Steel Numeral 0-9 - Rear Fix on Post	130		•	
SSP130(0-9)	Stainless Steel Numeral 0-9 - Rear Fix on Post	130			•



Rear Fix on Post Profile View

TABLE KEY: all measurements in mm

H: Height **W:** Width **SS:** Stainless Steel **PSS:** Polished Stainless Steel



NUMERICAL INDEX

Code	Page	Code	Page	Code	Page	Code	Page
2414	11	FP005	12	PH268	9	PH575	2
9581	20	FP006	12	PH269	9	PH580	2
9582	20	FP007	12	PH270	9	PH585	4
9583	20	FPP001	12	PH271	9	PH590	2
9584	20	FPP003	12	PH272	9	PH591	2
70183SN	12	FPP005	12	PH283464	18	PH594	2
70184NP	12	FPP006	12	PH283496	18	PH595	2
70185SCP	12	FPP007	12	PH2834128	18	PH595A	2
70186SN	12	HH2543F	16	PH285-600 (P or S)	8	PH596	4
70187NP	12	HH2543L	16	PH286-600 (P or S)	8	PH70076	13
70188SCP	12	PH001	4	PH286-1000 (P or S)	8	PH70077	13
70189	15	PH001A	4	PH29620	20	PH7458	14
70190PB	12	PH035	4	PH29625	20	PH881	4
70193SN	12	PH039PB	6	PH29720	20	PH955	4
70194NP	12	PH040PB	6	PH29725	20	PH997	4
70195SCP	12	PH041PB	6	PH298254	20	PH998	4
70196SN	12	PH042PB	6	PH381096	18	PH999	4
70197NP	12	PH043SCP	6	PH381128	18	PN2543F	16
70198SCP	12	PH044SCP	6	PH381160	18	PN2544F	16
70200	10	PH045SCP	6	PH381240	18	PN2544L	16
70200A	10	PH046SCP	6	PH381288	18	PN3045F	16
70201	10	PH047CP	6	PH4400396	18	PN3046F	16
70201A	10	PH048CP	6	PH44003128	18	PN3047F	16
70202	10	PH049CP	6	PH44003160	18	PN3048F	16
70203	10	PH050CP	6	PH44003192	18	PPN2543F	16
70204	10	PH053SCP	6	PH44003224	18	SS65(0-9)	22
70205	10	PH054SCP	6	PH44003256	18	SS65(A-D)	22
70206	11	PH055SCP	6	PH44003288	18	SS130(0-9)	22
BBA001	22	PH056SCP	6	PH458096	18	SS130(A-D)	22
BBA002	22	PH057CP	6	PH458128	18	SSA65	22
BBA003	22	PH058CP	6	PH458160	18	SSA65(0-9)	22
BBA006	22	PH059CP	6	PH458224	18	SSA65(A-D)	22
DS001	14	PH060CP	6	PH458288	18	SSA130	22
DS003	14	PH091	4	PH4523128	18	SSA130(0-9)	22
DS003P	14	PH2459240	20	PH4523160	18	SSA130(A-D)	22
DS004	14	PH2459246	20	PH4523192	18	SSP65	22
DS005	14	PH2459340	20	PH4523224	18	SSP65(0-9)	22
DS006	14	PH2459346	20	PH4523256	18	SSP65(A-D)	22
DS006P	14	PH257-600 (P or S)	8	PH4523288	18	SSP130	22
DS007	14	PH259-600 (P or S)	8	PH530	2	SSP130(0-9)	22
DS007P	14	PH261-450 (P or S)	8	PH532	4	SSP130(A-D)	22
DS008	14	PH263-300 (P or S)	8	PH533	4		
FP001	12	PH265-600 (P or S)	8	PH540	2		
FP003	12	PH267	9	PH570	2		

VICTORIA

PROJECT HARDWARE PTY LTD
(HEAD OFFICE)

P 1300 362 625

F 1300 362 643

E sales@delfarchitectural.com.au

W www.delfarchitectural.com.au

WESTERN AUSTRALIA

J.G. THOMAS PTY LTD

5 Durham Road Bayswater WA 6053

P 08 9272 7122

F 08 9272 7641

E sales@jgthomas.com.au

W www.jgthomas.com.au

NEW SOUTH WALES

JOHN TINTNER AGENCIES PTY LTD

P 02 9327 7604

F 02 9363 1777

M 0418 238 990

E jta@optusnet.com.au

NEW ZEALAND

MORGAN & AICKIN LIMITED

293A Church Street Onehunga Auckland

P 0800 656 611 (Toll Free)

P 09 622 1080

F 09 622 0940

E kees@moraic.co.nz

W www.morganandaickin.co.nz

QUEENSLAND / SOUTH AUSTRALIA / NT

ALL ENQUIRIES TO HEAD OFFICE

P 1300 362 625

F 1300 362 643

E sales@delfarchitectural.com.au

W www.delfarchitectural.com.au

View other Delf Architectural catalogues online at:
www.delfarchitectural.com.au

