



Iliamna Village Council (IVC)

Tribal Transportation Safety Plan

Tribal Transportation Program

INTRODUCTION

The Village of Iliamna is located on the northwest side of Iliamna Lake, 225 miles southwest of Anchorage. Iliamna, home to some 125 residents, operates within the 77,000 square acres of Iliamna Natives Limited (INL) territorial land. INL is a for-profit organization, which funds many activities and operations in the community. Iliamna Village Council (IVC) is a nonprofit tribal council, and principle administrator of this safety plan, addressing resolutions to community transportation needs. Iliamna Village is located in the Iliamna Recording District and is accessible by air and water. An 8-mile road connects Iliamna to Newhalen and a 14.5 mile road leads north to a proposed bridge site at the western end of Six Mile Lake. A bridge at this site would give access to the Village of Nondalton. Narrow roadways in Iliamna are traveled largely by all-terrain vehicles and snowmobiles.

The vision of Iliamna Village Council is to improve the overall safety of the transportation system for Iliamna Village residents and visitors. IVC's mission is to reduce the number of deaths and serious injuries caused by transportation safety issues by developing and maintaining a safe and efficient transportation infrastructure for Iliamna Village community members and the public. This Tribal Transportation Safety Plan (TTSP) has been developed with input from the local community, incorporating local knowledge data, data analysis and community feedback. The goal in developing this plan has been to identify current issues and priorities, which upon implementation, are intended to further improve transportation safety for the Native Village of Iliamna residents and others visiting our traditional lands.

On behalf of our community, IVC Council in collaboration with the Iliamna Transportation Department and our key partner NDCCM, Inc. have formed a working group to manage and maintain our Tribal Transportation Safety Plan. Together we pursue projects, programs and funding to plan, develop, and implement safety improvements and enhancements in transportation infrastructure and services within our community. This plan is our first step in prioritizing key emphasis areas to begin working towards completing the following goals to assist in safety improvements over the next 3-5 years:

- 1) Re-design/re-structure our community's main roadways to widen roads and create a safe route of travel on the side of roads for ATV and pedestrian traffic

- 2) Re-structure and enhance the road leading from Iliamna/Newhalen to Nondalton (Newhalen-Nondalton Road) to create a safer route of travel year-round for this critical community path that provides the only means of getting to and from Nondalton for resources or to visit residents, family members etc. in Nondalton
- 3) Explore possible solutions, including substances that may be applied to our dirt roads, to address the excessive dust that our community experiences for nearly eight months out of the year from ATV vehicles, causing asthma and other health and transportation-related issues for Iliamna residents
- 4) Implement our major bridge project to construct a bridge connecting Iliamna/Newhalen to Nondalton

SAFETY MANAGEMENT AND SYSTEM BACKGROUND

In 2005, the Federal Highway Administration and the Bureau of Indian Affairs, with Tribal input developed a “Strategic Highway Safety Plan for Indian Lands”. The Strategic Highway Safety Plan establishes direction and emphasis areas aimed at reducing crashes in Indian Country. In addition, in August 2008, the “Tribal Transportation Safety Management System Implementation Plan” was developed to improve safety and to meet emphasis areas identified in the “Strategic Highway Safety Plan for Indian Lands”. The development of a Tribal Safety Plan was just one of eight implementation activities recommended in the Tribal Transportation Safety Management System Implementation Plan. In 2013, a funding opportunity through the Tribal Transportation Program Safety Fund (TTPSF) was opened to Tribal applicants, to fund new TTSP planning activities. IVC was among those selected to receive \$12,500 to develop our IVC TTSP.

This Tribal Safety Plan was developed in partnership with Iliamna Village Council, Iliamna Village Transportation Department, our key partner in consultation and project management NDCCM, Inc., and Iliamna Village community members. IVC members have collected recent feedback and responses from our community and have held monthly council meetings where these concerns were discussed. IVC and Iliamna Village residents identified issues of concern and recommendations related to the following safety priorities: engineering, enforcement, emergency response systems, and education.

The top priorities identified by IVC members and Iliamna Village residents included the need to address narrow community roadways, focusing on ATV trails and safe pedestrian traffic paths on the side of roadways, ATV crossing and other signage including STOP signs, improved railings on two bridges in the community, the need for additional roadway lighting, the need for improvement to the Newhalen-Nondalton Road that can become completely in-accessible during certain times of the year due to the unstable, safer driving habits and safety awareness for vehicle operation, especially for young drivers and ATV operators, unreliable condition of the majority of the roadway, greater overall community knowledge on safely navigating Six Mile Lake during winter months, improved VPSO coverage, attention to excessive dust during certain times of the year, and the critical need for a bridge from Iliamna/Newhalen to Nondalton.

As an unincorporated community, Iliamna has no formal authority under state law for planning, platting, and land use regulation. These powers are exercised by the Borough acting through the Borough government. No Comprehensive Development Plan has been developed specifically for

Iliamna, but IVC is seeking to promote and maintain long-term transportation infrastructure development of this region through this Tribal Transportation Safety Plan.

SAFETY PRIORITIES

Engineering

Emphasis Areas:

- Dangerous ATV trails and paths on the side of roadways, on roads leading from the Village of Newhalen to Iliamna and from Iliamna to Nondalton
--Objective: Re-structure and re-design main community roadways and sides of roadways to create safer routes of travel for vehicles, ATVs, and pedestrian traffic



Sides of Iliamna community roadways become flooded with rain or snow melt



Roadways and sides of roadways must be re-structured and re-designed to create safe travel routes for ATV and pedestrian traffic

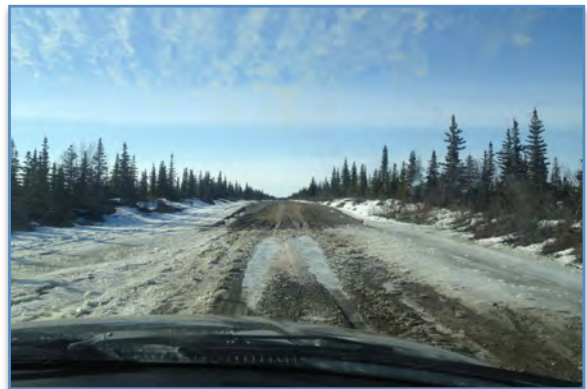
- ATV crossing and other signage including STOP signs need to be posted or rehabilitated

--Objective: Post signs and rehabilitate damaged or inadequate signage in the community to improve transportation safety and reduce risk of collisions and accidents

- Railings must be improved on two bridges in Iliamna
--Objective: Improve safety conditions when traveling across the two bridges in the Iliamna community by vehicle or non-motorized travel
- Newhalen-Nondalton Road, leading from Iliamna to Nondalton, needs rehabilitation
--Objective: Re-structure and enhance this roadway to create year-round safe travel from Iliamna/Newhalen to Nondalton Village



Hazardous roadway leading in and out of Nondalton from Iliamna is of concern to Iliamna residents as this roadway can be a dangerous route, and even become completely inaccessible by any means of travel at certain times of the year



- Install additional roadway lighting in main areas of the community
--Objective: Install roadway lighting in critical areas of the community, such as black-out spots where vehicle navigation becomes difficult and dangerous otherwise, especially in harsh winter weather conditions

- Excessive dust from ATVs throughout the community
 --Objective: Explore solutions, such as substances that may be applied to roads where ATVs cause excessive amounts of dust to collect in the air, hindering visibility for vehicles operators and also creating significant health hazards such as asthma for many community members
- A bridge to connect Iliamna/Newhalen Villages to Nondalton Village must be constructed to improve transportation safety and accessibility for all Iliamna, Newhalen and Nondalton residents and visitors
 --Objective: Construct a bridge that will allow for safe travel in and out of Nondalton from Iliamna/Newhalen, especially in emergency situations such as a natural disaster - flooding, earthquakes, wildfires - that would render people in either community helpless in escaping to safety if the Iliamna-Nondalton Road is also flooded or impassible



The bridge would need to be constructed from the end of Iliamna-Nondalton road to the Nondalton bank



- Review crash data and assess contributing factors
 - Objective: Address possible resolutions to accidents, injuries and other transportation safety concerns and prevent further incidents
 - Contributing Factors: Weather Conditions; Restraint use (seat belts, car seats); Alcohol or drug use; Distracted driving; Under-aged driving; Uneducated community members

Issue Champions:

- Iliamna Village Council
- Iliamna Village Transportation Department
- Native Development Consultation and Construction Management (NDCCM), Inc.

Implementation:

- IVC will work with the Iliamna Transportation Department and our key consultant NDCCM, Inc. to prioritize each emphasis area and begin exploring funding strategies and opportunities, while considering possible village/city ordinance or policy implementations that may be beneficial for planning, development and construction projects and programs in developing resolutions to each Engineering emphasis area
- Consult with NDCCM, Inc. to develop cost analyses and action plans to manage repairs and implement development work on areas of concern
- Identify any available internal assets and resources, and existing funding opportunities to implement action plans for Engineering emphasis areas

Performance Measures:

- Completion of planning, development and/or construction project or program proposals that addresses each Engineering emphasis area
- Implementation of project or program proposals
- Improved safety conditions and reduced accidents and injuries related to Engineering emphasis area transportation safety concerns

Action Plans:

- Assess community needs and concerns pertaining to transportation safety
- Analyze and assess local crash data and contributing factors
- Prioritize Engineering emphasis area transportation safety needs and concerns in the Iliamna Village community and develop projects and programs to address them
- Develop proposals to fund projects and programs
- Acquire funding to implement project or program proposals
- Continue ongoing exploration of additional funding opportunities to support implementation of Engineering emphasis area action plans

Enforcement

Emphasis Areas:

- Inadequate signage in the community causes hazardous driving conditions

--Objective: Post signage where signs are missing, repair damaged signs, and rehabilitate areas where posted signs are not visible

- Inadequate police coverage in the community
 - Objective: Hire a Village Public Safety Officer (VPSO) to supplement the one state trooper who currently provides police coverage for our community; provide adequate housing for the VPSO
- Review crash data and assess contributing factors
 - Objective: Address possible resolutions to accidents, injuries and other transportation safety concerns and prevent further incidents
 - Contributing Factors: Weather Conditions; Restraint use (seat belts, car seats); Alcohol or drug use; Distracted driving; Under-aged driving; Uneducated community members

Issue Champions:

- Iliamna Village Council
- Iliamna Village Transportation Department
- Native Development Consultation and Construction Management (NDCCM), Inc.

Implementation:

- IVC will work with the Iliamna Transportation Department and our key consultant NDCCM, Inc. to prioritize each emphasis area and begin exploring funding strategies and opportunities, while considering possible village/city ordinance or policy implementations that may be beneficial for planning, development and construction projects and programs in developing resolutions to each Enforcement emphasis area
- Consult with NDCCM, Inc. to develop cost analyses and action plans to manage repairs and implement development work on areas of concern
- Identify any available internal assets and resources, and existing funding opportunities to implement action plans for Enforcement emphasis areas

Performance Measures:

- Completion of planning, development and/or construction project or program proposals that addresses each Enforcement emphasis area
- Implementation of project or program proposals
- Improved safety conditions and reduced accidents and injuries related to Enforcement emphasis area transportation safety concerns

Action Plans:

- Assess community needs and concerns pertaining to transportation safety
- Analyze and assess local crash data and contributing factors
- Prioritize Enforcement emphasis area transportation safety needs and concerns in the Iliamna Village community and develop projects and programs to address them
- Develop proposals to fund projects and programs
- Acquire funding to implement project or program proposals

- Continue ongoing exploration of additional funding opportunities to support implementation of Enforcement emphasis area action plans

Emergency Service/Emergency Response System

Emphasis Areas:

- Inadequate emergency response precautions and fire safety defenses for Iliamna-Nondalton Villages

--Objective: Rehabilitate Newhalen/Nondalton Road and construct a bridge from Iliamna/Newhalen to Nondalton to ensure safe travel for emergency response services to and from Iliamna/Nondalton, and address the fact that Nondalton does not have a fire truck at their disposal - they do have fire hydrants in the community, but the closest emergency response resource is Iliamna Village, which does have a fire truck, but without certain reliable travel this safety measure cannot be a dependable emergency response resource

Issue Champions:

- Iliamna Village Council
- Iliamna Village Transportation Department
- Native Development Consultation and Construction Management (NDCCM), Inc.
- Local Fire Department Volunteers
- Trained First Responders/EMTs/Volunteers
- Iliamna Health Clinic
- Nondalton

Implementation:

- IVC will collaborate with the Nondalton community and continue our ongoing collaborative partnership with Iliamna local Fire Department volunteers, Health Clinic and trained First Responders/EMTs/Volunteers, and our Transportation Department to prioritize Emergency Service/Emergency Response emphasis areas and develop project/program proposals for improvements and enhancements to emergency response services, personnel, and training opportunities
- IVC will work with the Transportation Department and our key consultant NDCCM, Inc. to assess our prioritized Emergency Service/Emergency Response emphasis areas and begin exploring funding strategies and opportunities, while considering possible village/city ordinance or policy implementations that may be beneficial for planning, development and construction projects and programs in developing resolutions to each Emergency Service/Emergency Response emphasis area
- Consult with NDCCM, Inc. to develop cost analyses and action plans to manage repairs and implement development work on areas of concern
- Identify any available internal assets and resources, and existing funding opportunities to implement action plans for Emergency Service/Emergency Response emphasis areas

Performance Measures:

- Completion of planning, development and/or construction project or program proposals that addresses each Emergency Service/Emergency Response emphasis area
- Implementation of project or program proposals
- Improved safety conditions and faster, more efficient Emergency Services/Emergency Response Systems emphasizes area services

Action Plans:

- Assess community needs and concerns pertaining to transportation safety
- Analyze and assess local crash data and contributing factors
- Prioritize Emergency Service/Emergency Response emphasis area transportation safety needs and concerns in the Iliamna Village community and develop projects and programs to address them
- Develop proposals to fund projects and programs
- Acquire funding to implement project or program proposals
- Continue ongoing exploration of additional funding opportunities to support implementation of Emergency Service/Emergency Response emphasis area action plans