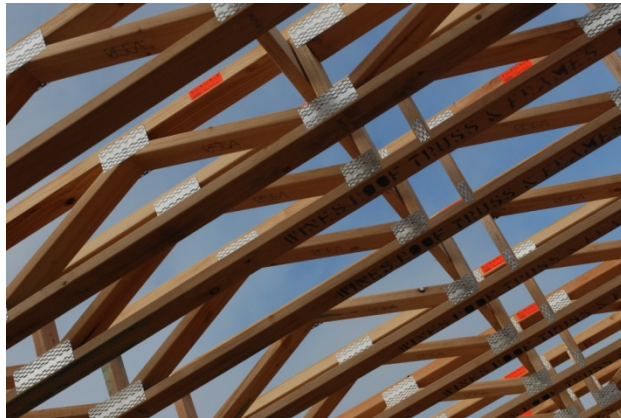


pryda

# Pryda Floor & Rafter Truss Systems



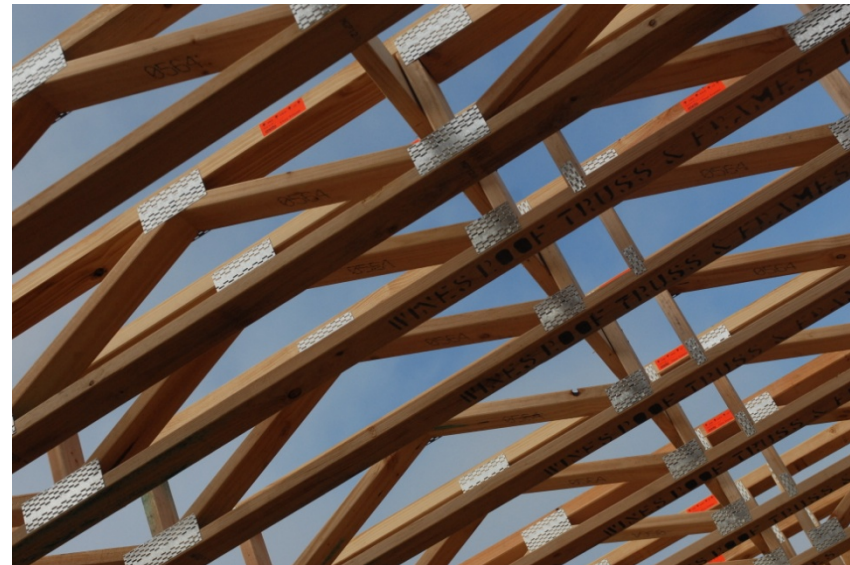
# Product Description

- Timber Web - Pryda Longreach or;
- Galvanised Steel Web - Pryda Span
- Open Web Design
- High Performance Floor & Rafter Trusses



# Product Description

- **Pryda Longreach**
- **Timber webs & chords for max. stiffness**  
**“ Glasses in your cabinet don't rattle”**
- **Manufactured to any depth from 200 – 450mm**
- **Low cost increases in depth will significantly increase span capacity or stiffness**



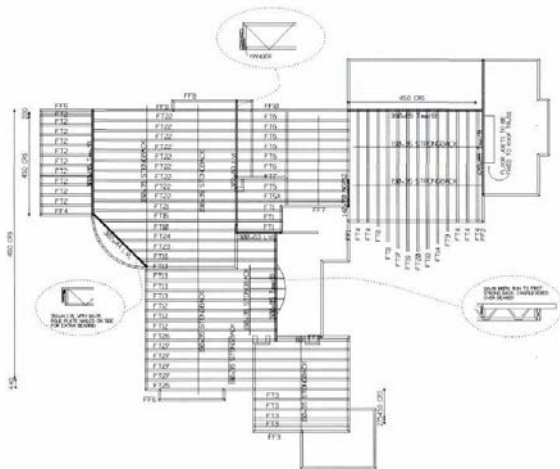
# Product Description

- **Pryda Span**
- **Steel diagonal webs for lightweight & economy,**
- **Depths available in nominal size  
250, 300 & 400mm**
- **Deep 'V' profile in web  
for max stiffness and  
resistance to damage  
on site.**



# Product Description

- The truss and frame plant will design the Pryda Floor Truss via the licensed software program.
- The software allows each floor truss to be customised for the job, including required stiffness, depth, timber grades and span.
- The truss plant will design the floor truss for optimal performance and cost efficiency
- The floor truss will be manufactured at the truss plant, stacked and then delivered to site
- Plan layout is provided with delivery

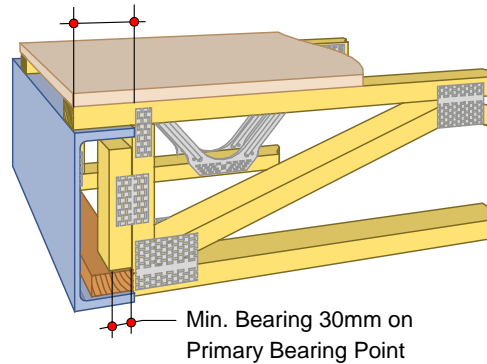


# Benefits

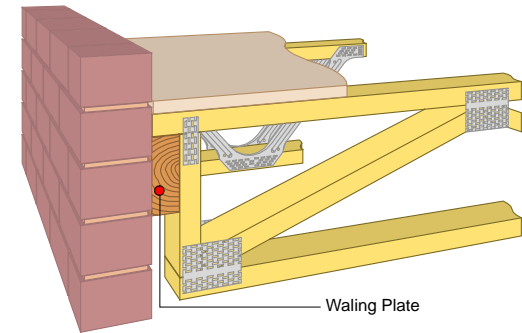
- **Stiff and rigid floors.**
- **Established dynamic limits to ensure rigidity & overcome springiness and bounce.**
- **Long span capacities, up to 7.1 metres at 400mm depth with MGP12 pine.**
- **Can eliminate the need for interior support walls and beams.**
- **Large spans in restricted height applications.**
- **A large selection of end support types for quick & easy installation.**
- **Suitable for typical requirements including steel beams, waling plates etc.**

STANDARD END DETAIL TYPE 12

Overhang Any Length



STANDARD END DETAIL TYPE 7



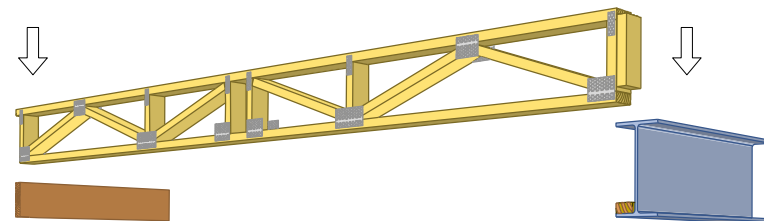
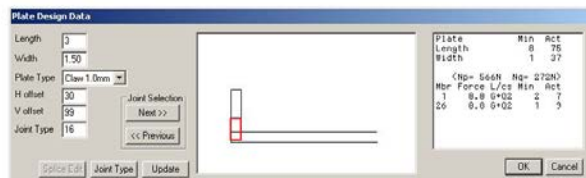
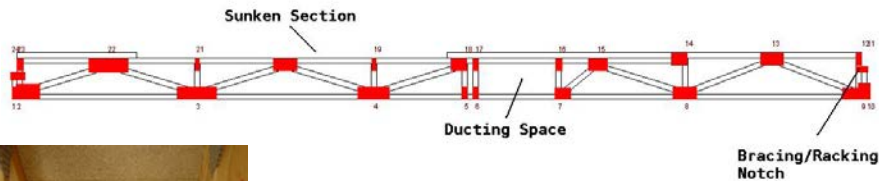
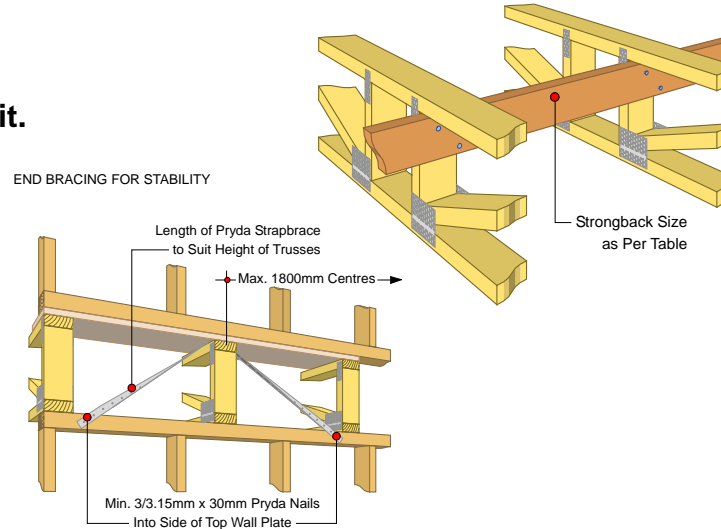
# End Features For Curved Support Walls



## Benefits

- **Quick & Easy Installation.**
  - End supports are prefabricated to fit.
  - No cutting or notching
  - Lightweight
  - Stable platform
  - Simple bracing techniques
  - Strongbacks midspan
  - “This Way Up” labels
- **Consistent Depth**
  - **Eliminates uneven ceiling levels**
- **Floor Set-Down Feature**
  - Section of Longreach floor trusses can be manufactured with a reduced depth to accommodate tiled wet areas

LONGREACH STRONGBACK



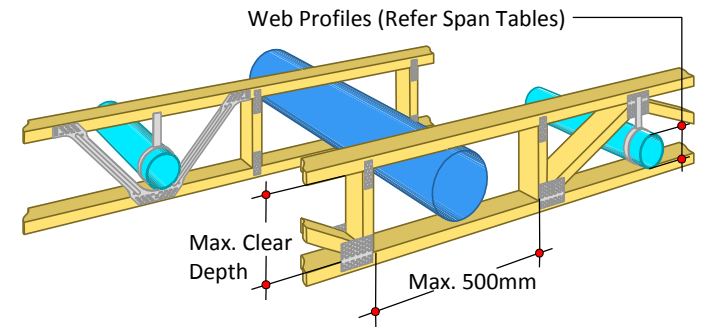
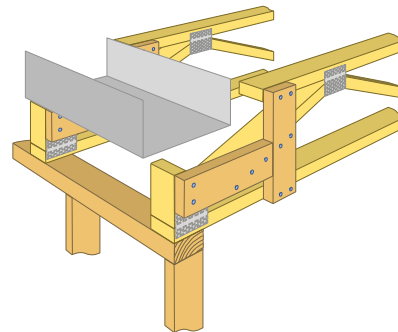
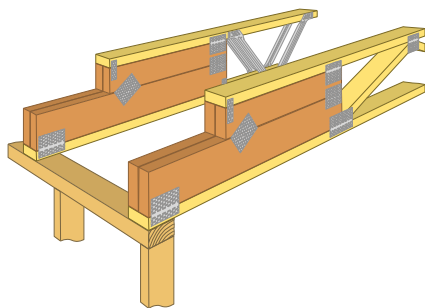
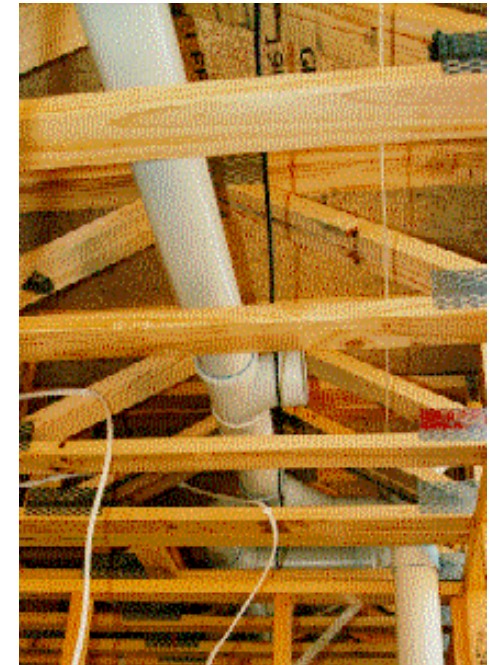
# Benefits

- **Cost effective**
- **Timber grade in chords selected for design requirements of the job.**
- **Longreach, small cost increase in depth for significant increase in span and stiffness.**
- **Quick installation**
  
- **Wide range of depths to suit any loading requirement.**
  
- **Commercial applications**
- **Suitable for offices, schools, hospitals and factories**



# Benefits

- Innovative solutions.
- E.g. accommodating box gutters
- Open web ensures easy access for plumbing and electrical services.
- Rectangular ducts up to 500mm will fit
- No cutting or drilling holes
- Strong record of successful designs for over 15 years.



## Case Study – St Clair Park Village, Auckland, NZ

**St Clair Park Village:** 10 individual 3 storey units generally in blocks of four and five

**Timeline for Timber Framing:** Start date in Jan 09  
Completion in Aug 09

**Specification:** 290 x 45 MSG10 joists, span 5770mm

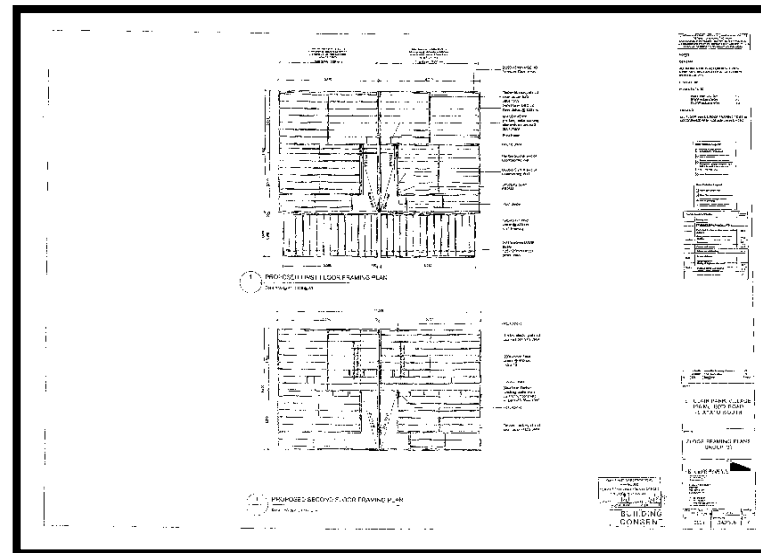
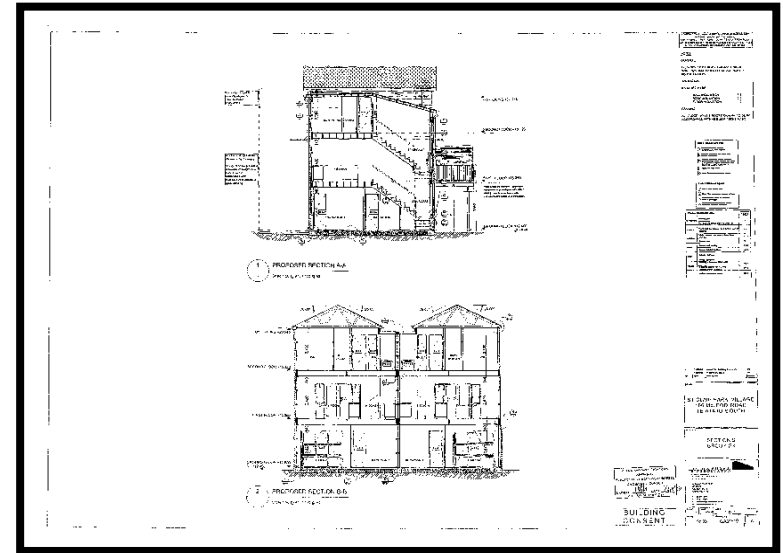
**Timber framework construction expectation:** 5 weeks

**Week 1:** Ground walls & 1st floor joists

**Weeks 2/3:** 2<sup>nd</sup> floor walls, 2nd floor joists, 3rd floor walls

**Week 4:** Truss erection and installation

**Week 5:** Framework and associated fixings completed



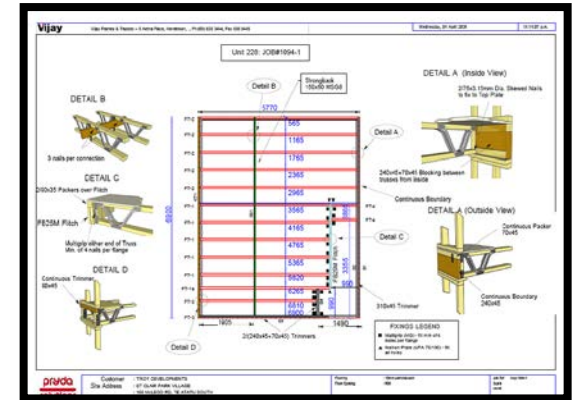
# Fabricator identified opportunity to supply a floor truss system

## Demonstration of construction simplicity via:

- easy-to-read documentation
- full scale model on factory floor

## Benefits of the Pryda Span floor truss system:

1. Eliminated on-site cutting time and waste
2. Plumbing, ducts and electrical wiring easily installed
3. Lighter than solid timber, but stiffer than other engineered systems
4. Delivered in user-friendly package



But there was an increase in material costs for the proposed Pryda Span floor of around 6%.

Despite this the builder could see the project cost benefits

**Project success with the following benefits:**

1. 5 week building time for floor to roof framing reduced by almost 2 weeks (up to 40%)
2. Direct labour saving – 2.5 times larger than the material cost increase
3. User friendly product - tradesmen found it easier to carry out their jobs (esp. plumbers and electricians)
4. Reduced critical path for block of units by around 15% ( 2 weeks/17 weeks)
5. Strong position to meet August deadline, minimising chance of indirect costs



# Outcomes

Material cost comparison did not reveal underlying project cost benefit

Designer reviewing future specification

Significant savings were achieved both in build time and financially because the builder was prepared to deviate from the consented documentation

The builder has been so impressed with results that he has stated he will continue to use a floor truss system where it can replace wide timber

# Summary

- 2 floor truss products.
  - Timber webs, Pryda Longreach
  - Galvanised steel webs, Pryda Span
- **Stiff & rigid floors**
- Long spans and range of depths
- **Cost effective**
- Quick & easy to install
  - Wide range of end supports
  - Plumbing & electrical services are easily installed