

High performance sealers

for protecting, preserving and enhancing your concrete, pavers, tiles or stone.

BY CHOOSING A CCS PREMIUM QUALITY SEALER YOU WILL:

- 1** Improve the appearance of your concrete, pavers, tiles or stone.
- 2** Protect the surface from harsh weather conditions.
- 3** Help the surface resist dirt, grime, salt, oils and other contaminants.
- 4** Enjoy a durable surface which is easier to maintain and clean.
- 5** Seal the surface to help restrict lime deposits and inhibit the growth of mould and algae.

Proven Performance

CCS Sealers are formulated with high quality resins to withstand the harshest of weather conditions.

CCS sealers have been applied to concrete surfaces for over 20 years and offer well proven, reliable long term protection. Like all CCS products, our sealers are manufactured according to strict quality assurance guidelines complying with ISO 9001.



ACRYLIC SEALERS

CCS Same Day Sealer

CCS Same Day Sealer has been specifically designed for application over freshly laid concrete. It effectively assists with curing and provides a protective primer coat prior to sealing with a more durable CCS acrylic sealer at a later date.

By combining special additives and slow drying solvents, CCS Same Day Sealer is capable of sealing the new concrete without blushing or whitening.

Note: Concrete sealed with CCS Same Day Sealer must be overcoated with a more durable sealer such as CCS Hardseal Advanced, Hi-Build Enduro or Hi-Build Enduro Matt within 7 to 28 days.



CCS Hardseal Advanced

CCS Hardseal Advanced is one of the most widely used products in the CCS Sealer range. It is ideal for coating and recoating stencil, pattern stamped, integrally coloured concrete, resurfaced concrete and textured pavers and includes a hard resin to provide resistance against tyre marking and dirt.

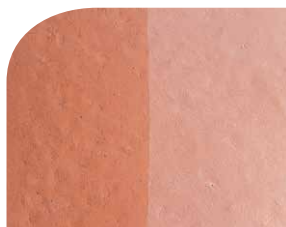
CCS Hardseal Advanced provides a rich semi-gloss finish.



CCS Hi-Build Enduro and Hi-Build Enduro Matt

CCS Hi-Build Enduro and Hi-Build Enduro Matt are high solids, solvent based, gloss sealers offering a superior and longer lasting coating.

Formulated with additional additives to increase and prolong gloss life, CCS Hi-Build Enduro provides an extremely hard film of limited flexibility with excellent resistance to tyre marking and UV whereas Hi-Build Enduro Matt contains flattening agents which produce a more muted satin finish.



Sealing concrete with an acrylic sealer can provide a gloss, semi-gloss or matt appearance. This photo demonstrates the difference between sealed (left hand side) and unsealed coloured concrete.



This photo shows the difference between an unsealed (right hand side) and sealed section (left hand side) of the same concrete surface after several years of weathering. The sealed section of the concrete remains clean after many years, whereas the unsealed section (with the pen) is dirty due to the accumulation of dirt and grime.

REJUVENATING AND RESEALING OLD CONCRETE SURFACES

It is never too late to seal or reseal a concrete surface. With correct preparation, old concrete can be given a dramatic facelift by coating it with the appropriate CCS Sealer.



For total removal of old acrylic sealers from concrete, CCS have introduced a new, highly effective environmentally friendly stripper – CCS Enviro Stripper, which contains none of the harmful ingredients found in conventional strippers. For further information on preparing and cleaning surfaces prior to recoating, please consult with your applicator.

CCS Colour Master Sealer and Colour Master Tint

To colour and decorate plain grey concrete or rejuvenate your existing decorative concrete, we offer a CCS Coloured Sealer kit consisting of the CCS Colour Master Sealer clear and a 2 litre Sealer Tint.



By mixing the 2 litre tint pack with the 18 litre CCS Colour Master Sealer, you can produce 12 different opaque coloured sealers. CCS Colour Master Sealer incorporates a very high acrylic solids content and is specially formulated to accept the CCS tint packs without the colour settling. Please refer to the back cover for available sealer tint colours.

Note: CCS Master Sealer can be made into a matt/satin finish with the use of CCS Universal Flattening Agent.



Before – This exposed aggregate driveway was never sealed and as a result, dirt, grime and tyre marks have accumulated on the surface.



After – The driveway was cleaned and sealed with CCS Blue Grey Colour Master Sealer to bring it back to life!



Revitalise existing concrete with CCS Coloured Sealer.

CCS Grip Additives

As a general statement, the application of a coating to concrete will reduce the existing slip resistance of that surface.



Consequently, care must be taken before sealing concrete, to ensure the unsealed surface has sufficient profile to aid traction.

To aid traction, mix a satchel of CCS Sealer Grip additive into the sealer prior to application of the final coat. However, as the sealer wears, the traction additives will also diminish in effectiveness and may therefore need to be reapplied at a later date.

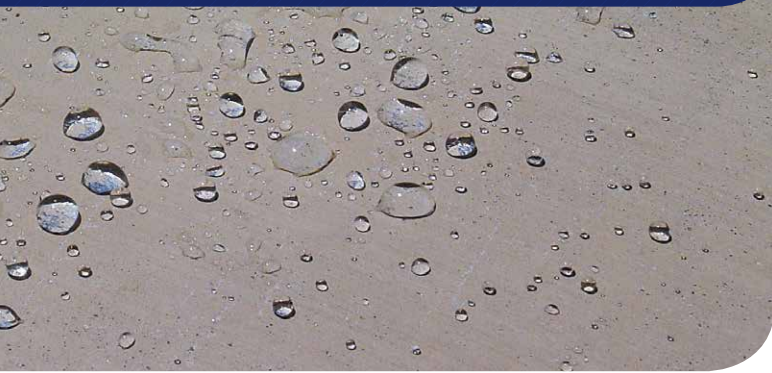
CCS Solvent

CCS Solvent is an all purpose solution used to thin CCS acrylic sealers and clean application tools.

CCS Solvent is also used to prepare previously sealed concrete surfaces prior to resealing the area with a CCS Acrylic Sealer.



PENETRATING SEALERS



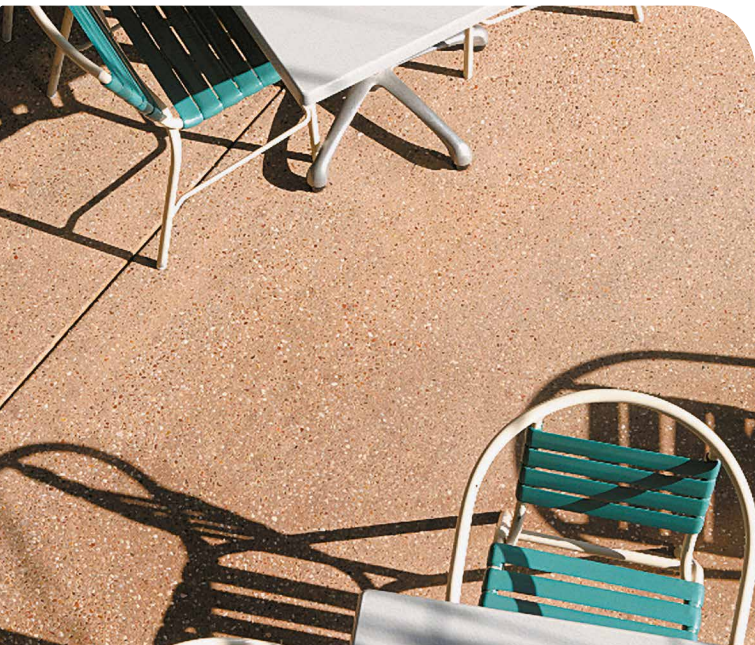
CCS penetrating sealers repel water while allowing the surface to breathe.

CCS Natural Supreme HV, Streetscape, Stain Block and Stainblock Enricher

Unlike CCS acrylic sealers which coat the surface, penetrating sealers such as CCS Natural Supreme HV, Streetscape, Stain Block and Stainblock Enricher penetrate deep into the surface to provide protection against the ingress of water borne pollutants and salts.

CCS Streetscape and CCS Stain Block also include resins that provide resistance to oil penetration and subsequent staining. For that reason CCS Streetscape and CCS Stain Block are widely used in public precincts and alfresco dining areas. Stainblock Enricher has the added feature of enhancing the substrate to provide a slightly richer substrate tone.

All other CCS penetrating sealers will preserve a natural appearance to concrete, porous natural stone and clay pavers.



CCS Alfresco Seal WB

CCS Alfresco Seal is a water based, low VOC, cross linking emulsion designed to protect and enhance both internal and external surfaces. Application of two coats of CCS Alfresco Seal WB will provide a finish not usually seen by water based sealers.



CCS Alfresco Seal WB has the added feature of being able to be applied over the top of solvent based sealers provided the old sealer is in good condition.



Urethane Sealers – for indoors and outdoors

CCS Decrathane Gloss and CCS Decrathane Satin sealers are water based, low VOC urethane sealers. CCS Armourthane and Armourguard SP are solvent based sealers which provide a smooth hardwearing surface. All urethane sealers are supplied as a two-pack, easy to use kit except for Armourguard which is a single product.



The above sealers can be used as an integral part of the CCS Galaxy Epoxy System (please call your local CCS office or talk to your specialist flooring applicator about our internal epoxy and epoxy flake finishes).

Polyaspartic Sealer – high performance indoor and outdoor sealer coating.

CCS Rapid Floor Polyaspartic Sealer is a state-of-the-art, two-pack VOC free, rapid cure coating. This sealer is ideally suited for concrete and cementitious surfaces, but can be applied to a range of other substrates. CCS Rapid Floor Polyaspartic Sealer can be applied during large temperature variations and bonds extremely well to just about any concrete surface. It will accept pedestrian traffic within hours, tolerates high temperatures when cured, and has exceptional UV and stain resistance.



CCS Rapid Floor Polyaspartic Sealer can be used as an integral part of the CCS Galaxy Epoxy System for use with flake and metallic look floors (please call your local CCS office or talk to your specialist flooring applicator).

CCS Sealer Tint Colours



**CONCRETE
COLOUR
SYSTEMS**

Better colours and coatings

CCS COLOUR MASTER SEALER AND COLOUR MASTER TINT

CCS Colour Master sealer is a two-part sealer system used to colour plain concrete in domestic or light commercial applications. It is a high performing coating that provides rich, UV resistant colour in an opaque finish.



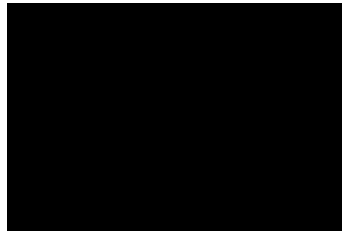
PROVEN PERFORMANCE

CCS Colour Master sealer is formulated with a strong resin made to withstand the harshest of weather conditions.

With over 20 years of experience, CCS sealers are proven to provide long term protection.



2016/2017 Range



CCS BLACK*



CCS CHARCOAL



CCS COAL



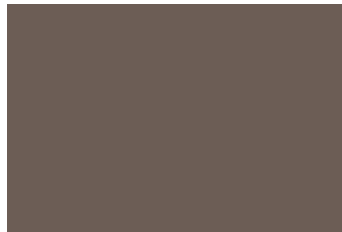
CCS BLUE GREY



CCS STORM GREY



CCS SHALE GREY



CCS TRUFFLE



CCS FOSSIL



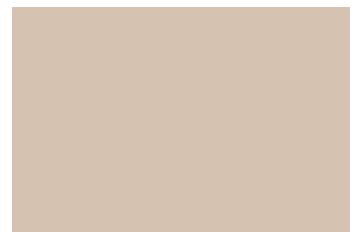
CCS TAUPE



CCS TERRACOTTA



CCS SANDSTONE



CCS ALMOND

*Black and Shale Grey are also available as a Petrol Resistant Sealer.

Limitation of the above colour chart:

Due to the limitations of the printing process, the above colours are an "indication" of the final colour. To view the exact colour, ask your applicator to show you a "painted" swatch from the colour key chain.

For further information on CCS products, visit www.concretecoloursystems.com.au to download the relevant Technical Data Sheets or call 1800 077 744.



Concrete Colour Systems
is a Division of River Sands Pty Ltd

HELPLINE (TOLL FREE) 1800 077 744
helpline@concretecoloursystems.com.au

Brisbane (Head Office) 07 3412 8111
Sydney 02 9677 1056 | **Melbourne** 03 9311 9225
Adelaide 1800 077 744 | **Perth** 1800 077 744
Tasmania 1800 077 744

www.concretecoloursystems.com.au

Your distributor/applicator is: