

## ASCENT ECONODRI

HIGH EFFICIENCY - ANTIMICROBIAL

A256P (WHITE) HD15250

A256PS (METALLIC SILVER) HD15252

A256PB (BLACK) HD15251

- **FAST DRY TIME**
- **ANTIMICROBIAL INFUSED PLASTICS**
- **FULLY AUTOMATIC INFRA-RED OPERATION**
- **ENERGY EFFICIENT - VERY LOW OPERATING COST**
- **SLIM UNOBTRUSIVE PROFILE**
- **LONG LIFE MOTOR AND CARBON BRUSHES**

### SAFE SURFACES

Our revolutionary antimicrobial infused components inhibit the growth of microbes including Staphylococcus and E.coli. Components are manufactured from special resins using EPA approved silver ion technology that infuses plastic parts and coatings with antimicrobial properties.

### SPECIFICATIONS

Construction:

Enclosure - ABS FR, Base - ABS FR, Fan Housings - FR

All plastics are flame retardant to UL94 VO,

Class II double insulated, enclosure splash/drip proof to IPX3, non-corrosive.

Gross weight 2.24 kgs. Shipping weight 2.52 kgs.

Electrical rating 220-240 V~ 50-60Hz, 2.19 kW, 9.5 AMP

Noise level 69 dB. Air volume 5.4 M3/min. Air velocity 175 km/hr.

### PLANNING

Generally, one hand dryer is recommended for every two hand basins. For heavy use in large washrooms, use two hand dryers for every three basins.

### ELECTRICAL SAFETY APPROVALS

AS/NZS 60335.2.23 in conjunction with AS/NZS 60335

Certificate of suitability No. Q070141

### ELECTRICAL CONNECTION & ADDITIONAL NOTES

This dryer is double insulated and does not require earthing/grounding. Dryers are provided with a supply cord and plug.

Dryer(s) may be fixed wired. Wiring should emerge from the wall at the position marked - Fixed wiring entry.

### TOTAL SATISFACTION WARRANTY

Electronic Control Only Warranty - 5 years

All other components - 5 years

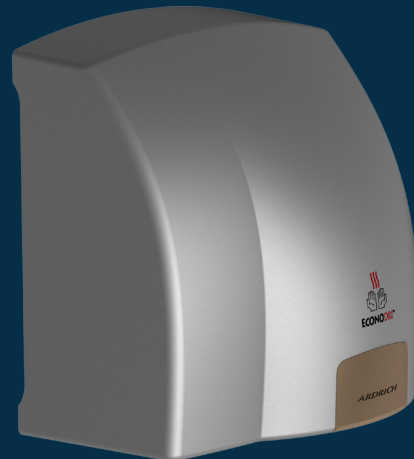
DISABLED PERSON COMPLIANT 

EMC COMPLIANT  Z184

## TECHNICAL



A256P  
WHITE/TAUPE



A256PS  
METALLIC SILVER  
/TAUPE



A256PB  
BLACK

## ASCENT ECONODRI

HIGH EFFICIENCY - ANTIMICROBIAL

A256P (WHITE) HD15250

A256PS (METALLIC SILVER) HD15252

A256PB (BLACK) HD15251



### RECOMMENDED MOUNTING HEIGHTS

From the floor to the bottom of the dryer:

Men's washrooms -	1200mm
Women's washrooms -	1150mm
Children's washrooms - ages up to 10	860mm
Children's washrooms - ages up to 16	1120mm
Disabled person's washrooms -	1015mm

### DRYER DIMENSIONS

Height -	273 mm
Width -	256 mm
Depth -	173 mm

