

SANIACCESS 2

SA 80

The SANIACCESS 2 is used to install a WC and wash basin. Two service panels on top of the unit allows fast and easy access to internal components.

PUMPING DISTANCE UP TO 5M

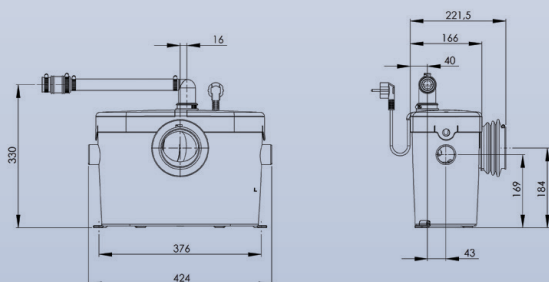
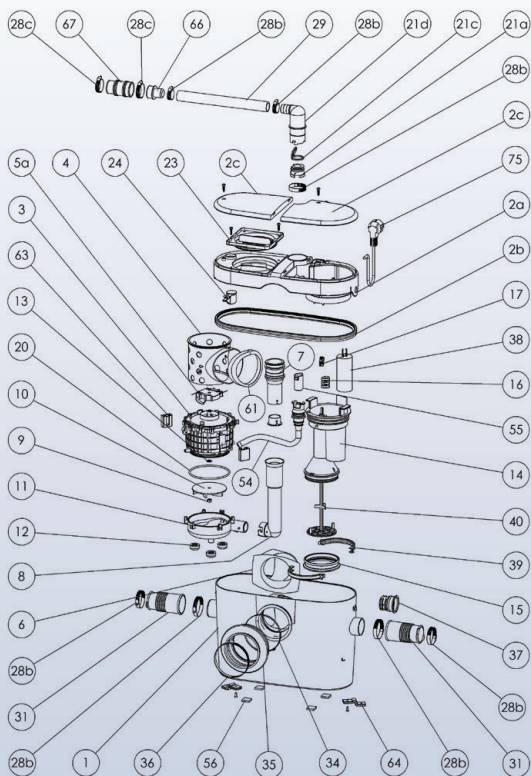


2 YEAR WARRANTY



Super quiet

PUMPING DISTANCE UP TO 100M



POSSIBLE CONNECTIONS

WC, vanity basin

VERTICAL PUMPING HEIGHT

Up to 5m

HORIZONTAL PUMPING DISTANCE

Up to 100m (refer to pumping graph below)

RECOMMENDED DISCHARGE PIPE DIAMETER

20mm uPVC Pressure Pipe

NORMAL OPERATING TEMPERATURE

35°C

ELECTRICAL POWER SUPPLY

220-240V / 50Hz

MOTOR POWER RATING

400W

OVERALL MEASUREMENTS (W x H x D)

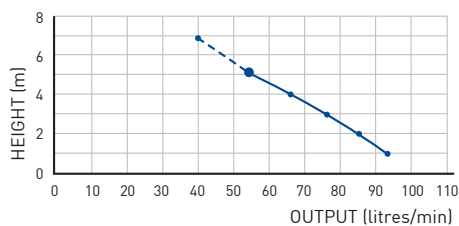
424 x 330 x 166mm

ACCESSORIES

- Factory pre mounted non return valve (supplied) (Isolation valve not supplied)

All horizontal pipework requires a minimum of 1:100 fall

FLOW RATE PERFORMANCE



PUMPING DISTANCE PERFORMANCE

Increase size of horizontal run by one pipe size after 5m

