



COVID-19 Screening, Detection & Tracing

“Rebuilding Global Confidence”

www.EmittoWorld.com





Latin

Etymology

Definition: send forth, emit



Vision & Mission

- We are a team of experienced health, academic, technology, airport, risk management and commercial leaders who have developed a comprehensive plan to restore public confidence in the safety of human interactions.
- Our model is HIPAA compliant, allows for contact tracing. Is adaptable and flexible to accommodate the newest medical and technological developments and government mandated standards.
- Our System of COVID-19 screening and detection for is ready for implementation in multiple settings including airports, universities, stadiums, restaurants and other settings.
- Our platform is well organized, capitalized and will be operational in a uniform and concise manner by Q3 2020.



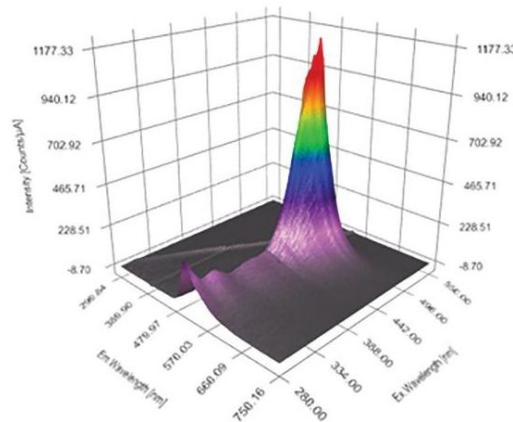
Use Case Scenarios

- Universities
- Airports
- Stadiums
- Hotels
- Restaurants
- Mass Transit
- Government Buildings
- Banking
- Any Human Interaction

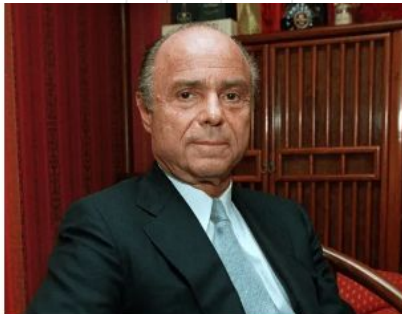


Key Components of EMITTO

- On your phone. In your home. Safe. Effective.
- Our HIPAA Compliant App is the global standard.
- Key features:
 - I. The most accurate **SURVEY** tested by over 40,000 people
 - II. A phone based **O2 TEST** that uses oxygen levels as a predictor
 - III. Proven **HIPAA** Compliant data storage
 - IV. Real time **CONTACT TRACING** that is not device based
 - V. **DASHBOARD** to allow facility managers to monitor who is coming onto their premises
 - VI. Live testing at two Midwestern **AIRPORTS**
 - VII. The backing of a major research **UNIVERSITY**
 - VIII. **MUNICIPAL** testing in a mid size Midwestern city



Our Team – Officers



**Moreton Binn,
Chairman CEO**
Former CEO Atwood Richards
Former Chairman XpresSpa

With a distinguished career as founder, CEO and Chairman of multiple international companies, Moreton Binn is the visionary behind Emitto. He and his wife, Marisol, founded the Binn Animal Rescue and Sanctuary in Ridgefield, CT.



Marisol Binn, COO
Founder XpresSpa

Marisol is the visionary who created XpresSpa and grew it into a worldwide enterprise. She owned a Coca Cola bottling franchise in South America and is the founder of the Fernandes soda company which licenses its brands to Coca Cola. She has been an executive and board member in multiple global enterprises.



**Admiral Joxel
Garcia, EVP/Medical
& Environmental
Principal**
Former Assistant Secretary
for Health

Admiral Garcia is a physician and retired Four-Star rank Admiral in the US Public Health Service Commissioned Corps. He served as the fourteenth Assistant Secretary for Health, US Department of Health and Human Services.

Our Team – Officers



David Sterling, CFO
CEO Sterling Risk

David is the CEO of Sterling Risk. He also serves on the Executive boards of UJA NY, the Nassau County Police Reserves, Federal Drug Agents Foundation, the Homeland Security Foundation, Suffolk County Police Reserves, Rambam Hospital. David also serves on the National Board of AIPAC.



Jeff Dudan, CDO
Development
CEO Dudan Brands

Jeff is a franchise executive with 25 years of experience founding, building, operating complex national franchise companies. He is the CEO of Dudan Brands and the CEO of FranDevCo.



Nick Neonakis, EVP
Licensing
CEO The FCC

Nick is a franchise executive with 20 years experience in global franchising. He is the CEO of The Franchise Consulting Company, the CEO of The Great American Franchise Expo and the publisher of The Franchise Journal.

Our Advisory Team



Alain Maca
Former CEO JFK T4

Alain has been in the airport industry since 1972. He was COO at Amsterdam Schiphol and CEO of JFK T4. He has run airports in NY, Atlanta, Orlando and was an executive for KLM Airlines and Ogden Aviation Services.



Steven Holmes
Technology Visionary

Steven has over 20 years of experience leading teams in the pursuit of innovation, quality and manufacture of revolutionary consumer & medical devices. He has worked at Intel, Apple, Nike, Flextronics and Rivian.

Our Advisory Team



Les Cappetta
Former CEO SSP America
Chair ACI

Les Cappetta was formerly Chairman and CEO of SSP America, and was an executive with HMSHost & Marriott Hotels. He served as the elected Chairman of Airports Council International (ACI-NA) Associates' Board.



John Frey
Political Advisor

John Frey is the Connecticut State Representative for the 111th District. He has tirelessly served our Country in State and National politics since 1998.



Our Process

1 Based on the “Circles of Safety” model, begin testing far away from a location to limit the number of potentially infected individuals from coming into contact in the successive inner circles.

2 Utilize the self-screening technology for individuals to determine if they are high or low risk prior to entering a secure zone. Our app allows for contact tracing in a HIPAA compliant manner.

3 Multi-phase approach to identify & screen individuals prior to entering a secure setting.

Our Process – cont'd

4

Upon satisfactory completion of app based self-assessment, individuals will proceed to airport and undergo curbside screening before being allowed to enter the travel system.

5

At airport curbside, if individual temperature & O2 variances are detected, individuals will be asked to go to a medically standardized testing station.

6

If they pass COVID-19 testing, they proceed to ticketing / check in / baggage drop process and then to TSA screening. If they fail, they will not be allowed to enter the system.

7

All results will be reported to the appropriate public officials while protecting individuals rights under HIPAA requirements and other privacy statutes.

Circles of Safety – Major Components – Airport Boarding

Home

Airport

Airport

Airport

Airport

1

Home App:
Screen Test via
Proven
SmartPhone
Technology*



2

Curbside:
O₂ + Temp +
additional
screening*

3

Terminal:
IgM or Virus
Test
as Needed and
Practical*

4

Ticketing &
TSA

5

Enter Secure
Airport
Concourse



Board Flight



*This technology is proven to identify people who are at risk for Covid-19 transmission

*Majority of travellers will be greenlight straight to Ticketing

*Travellers who fail app and curbside test will require additional screening

Circles of Safety – Major Components – Airport Entry

Survey
Green =
expedited
check in



Check In



Survey
Yellow =
O2 & Temp



O2 & Temp Test



Pass =
Check In



Survey
Red = Full
battery of
tests



Blood Screening



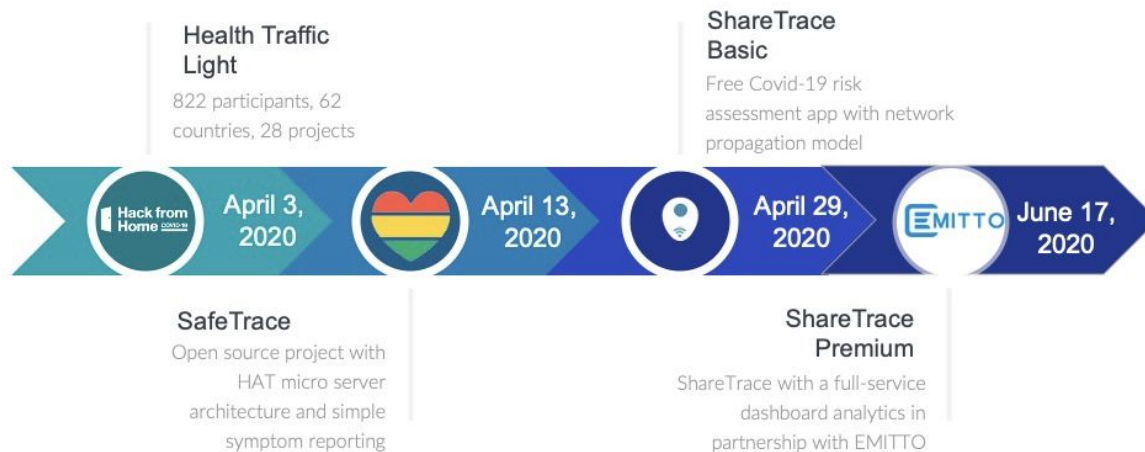
Pass =
Check In



Fail = Quarantine

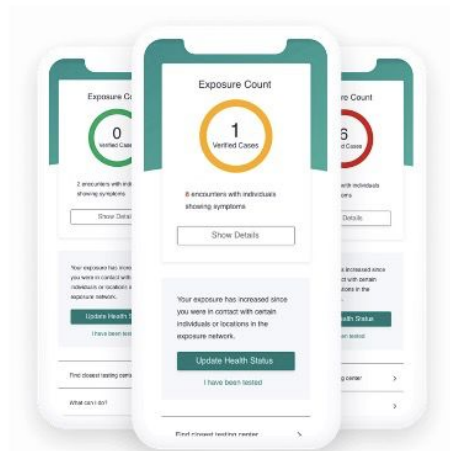
How did we get here

Timeline



Why ShareTrace

Provides Covid-19 Risk Score based on symptoms and social interaction patterns with other people. Using anonymized networks of digital twin of individual users, ShareTrace computes Covid-19 Risk Score that can be used for individuals and organizations to minimize unnecessary risk as they try to re-open the economy.



Faster. Smarter.

By leveraging state-of-the-art network learning model, ShareTrace is to identify social exposure risk of individuals better than traditional contact tracing tools.



Anonymous. Ethical. User-Controlled.

ShareTrace computes risk scores privately and anonymously. No personal data is stored in ShareTrace. Our users own their data, because Sharetrace stores what it needs in Personal Data Accounts (PDAs) owned and controlled by each user.



Dynamic. Collective.

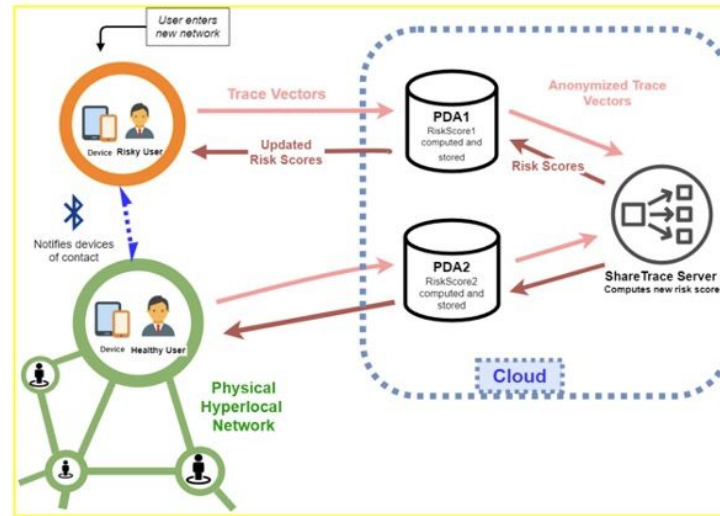
Using ShareTrace risk score, users can understand how likely they are to have met an infected person, or themselves to be asymptomatic carriers of Covid-19. With this knowledge, they can better protect their communities

How Does It Work?

ShareTrace stores all the data it needs in personal data accounts owned and controlled by each user. Only people given permission by the account owner can see this data.

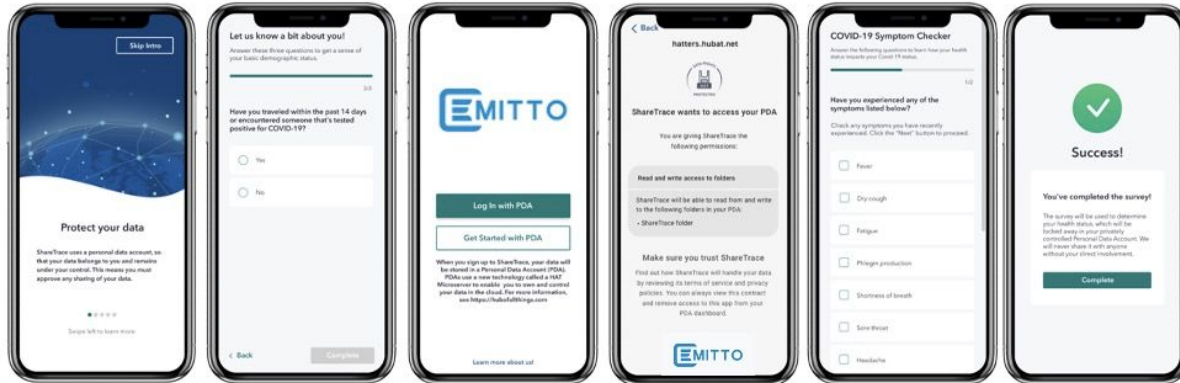
With ShareTrace, personal data accounts are empowered to compute private risk scores. Users seeking to understand their network risk can send an anonymised risk score to the ShareTrace server, which uses it as a digital twin and computes hyperlocal network risk scores based on the interactions people have with each other.

No data is stored by ShareTrace.

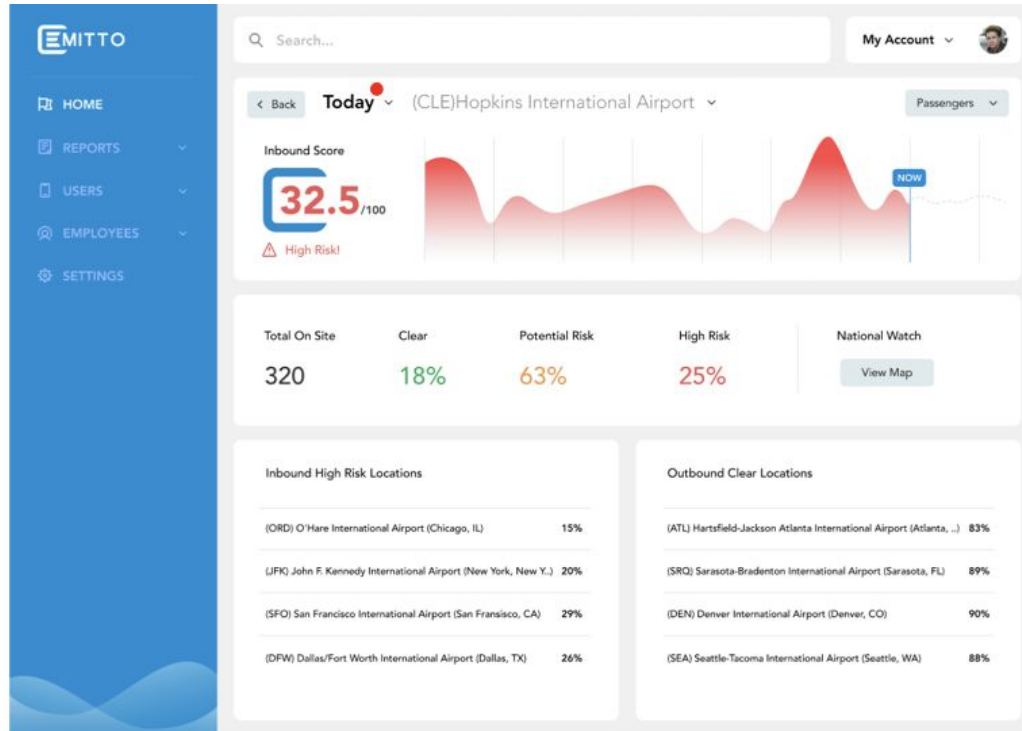


EMITTO Mobile App Demonstration

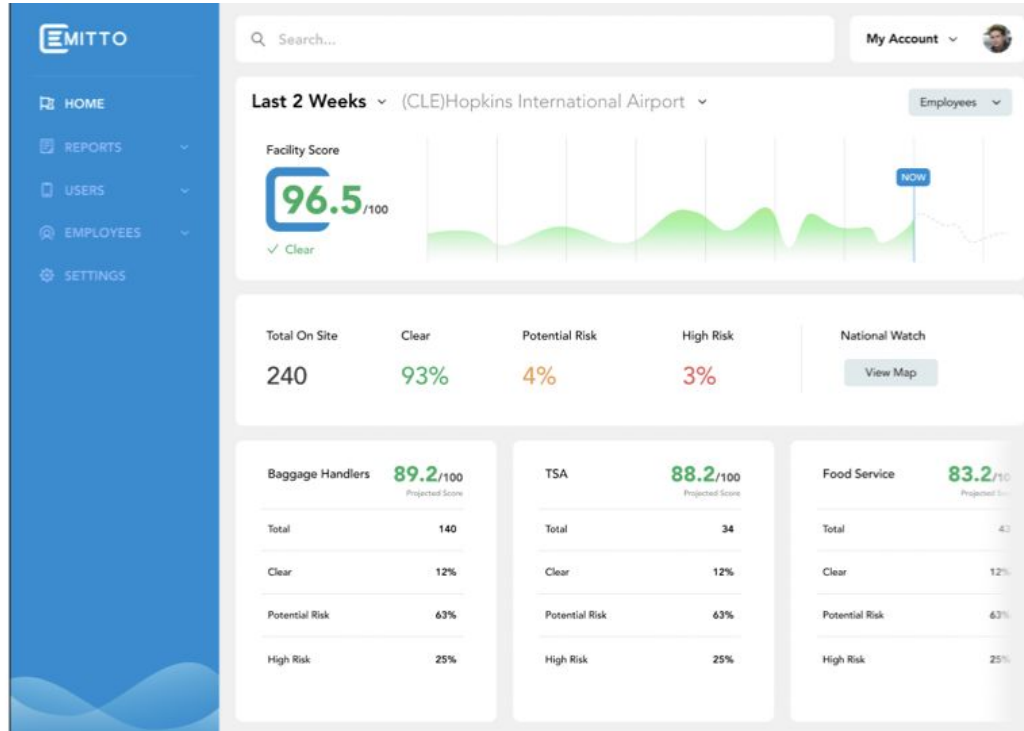
Powered by ShareTrace



EMITTO Dashboard: Passenger



EMITTO Dashboard: Employees



Phasing Plan

1

Phase 1 – Beta Site Implementation

First Beta Sites to launch in Q2 –
(E.G.: JFK, CWRU University)

2

Phase 2 – Rollout

After successful Beta Tests, roll out
solution nationwide by end of Q2

3

Phase 3 – Fully Operational

System can be fully operational for
domestic and International users

Rollout

1 Have entire process reviewed by HIPAA compliance counsel with letter of opinion. A Public/Private Partnership will implement a medically licensed, high standard solution to all users

2 Our rollout model provides the ability to:

- Align with existing COVID-19 standards in a HIPAA compliant manner
- Scale rapidly
- Spread the investment across the network
- Spread the HR and medically certified management across the network
- Dictate and maintain the highest standards
- Aggregate HIPAA compliant anonymized data to central decision-making public authorities

3 We are building the national network necessary to meet the scheduling requirements.



Contact

Main Contact

Moreton Binn

Direct: 203-431-7933

Cell: 646-662-7696

moreton@binn-investments.com

www.emittoworld.com