



**THE AMHERST**  
*Elevation B*

**THE AMHERST**  
*Elevation A*



**THE AMHERST**  
*Elevation C - Dormers Opt.*



THE ★ ENCLAVE ★ AT  
**RIDGEPOINTE**

**For Information Contact:**  
**Cheryl Flaherty, Sr. Sales Manager [cheryl@kemphomes.com](mailto:cheryl@kemphomes.com)**  
**Office (636) 265-2646 - Cell (314) 502-8820**  
**or visit [www.kemphomes.com](http://www.kemphomes.com)**

A principal in the ownership entity is a licensed real estate broker but not involved in any of the brokerage transactions.

The renderings are an artist's conception. Floor plans are intended to serve as a general guide, not to accurately depict the legal description of the property's walls, boundaries, dimensions, scale of rooms and/or their relative locations. Plans and specifications subject to change without notice or obligation.



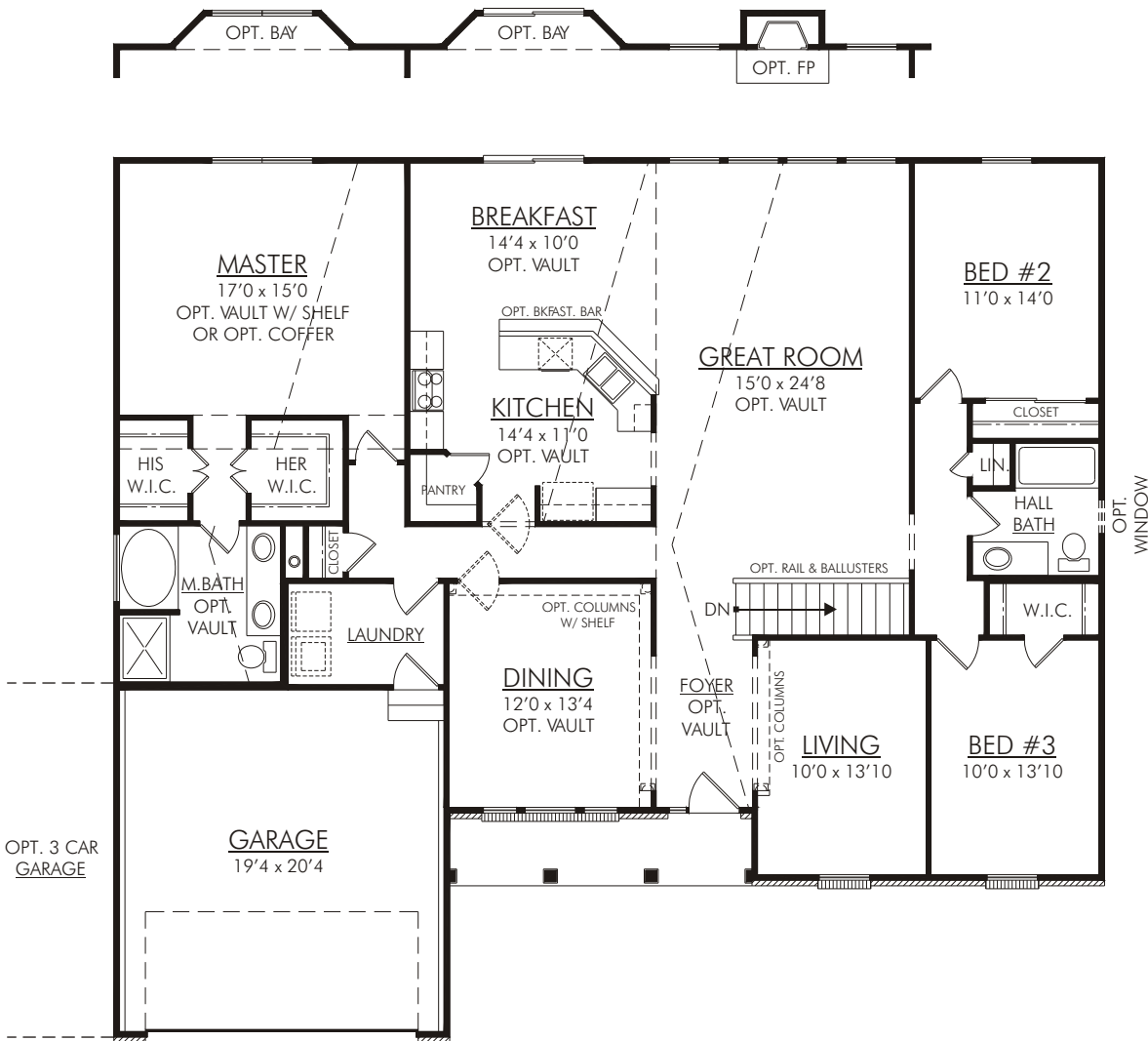
EQUAL HOUSING  
OPPORTUNITY

**THE AMHERST**  
*Elevation D*

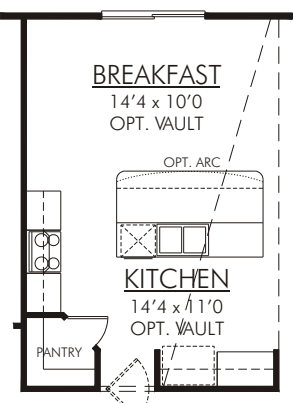




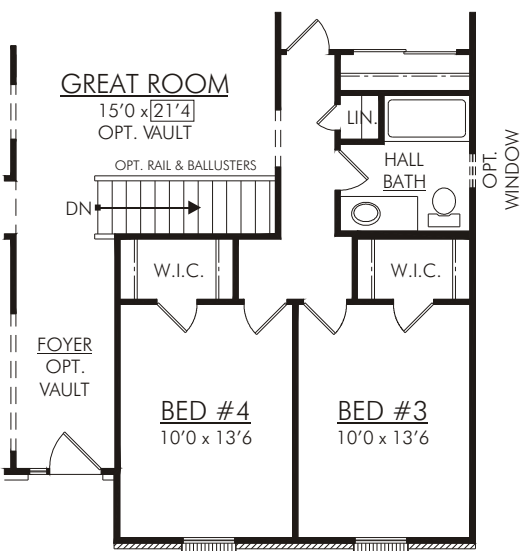
THE ENCLAVE AT  
RIDGEPOINTE



FIRST FLOOR PLAN

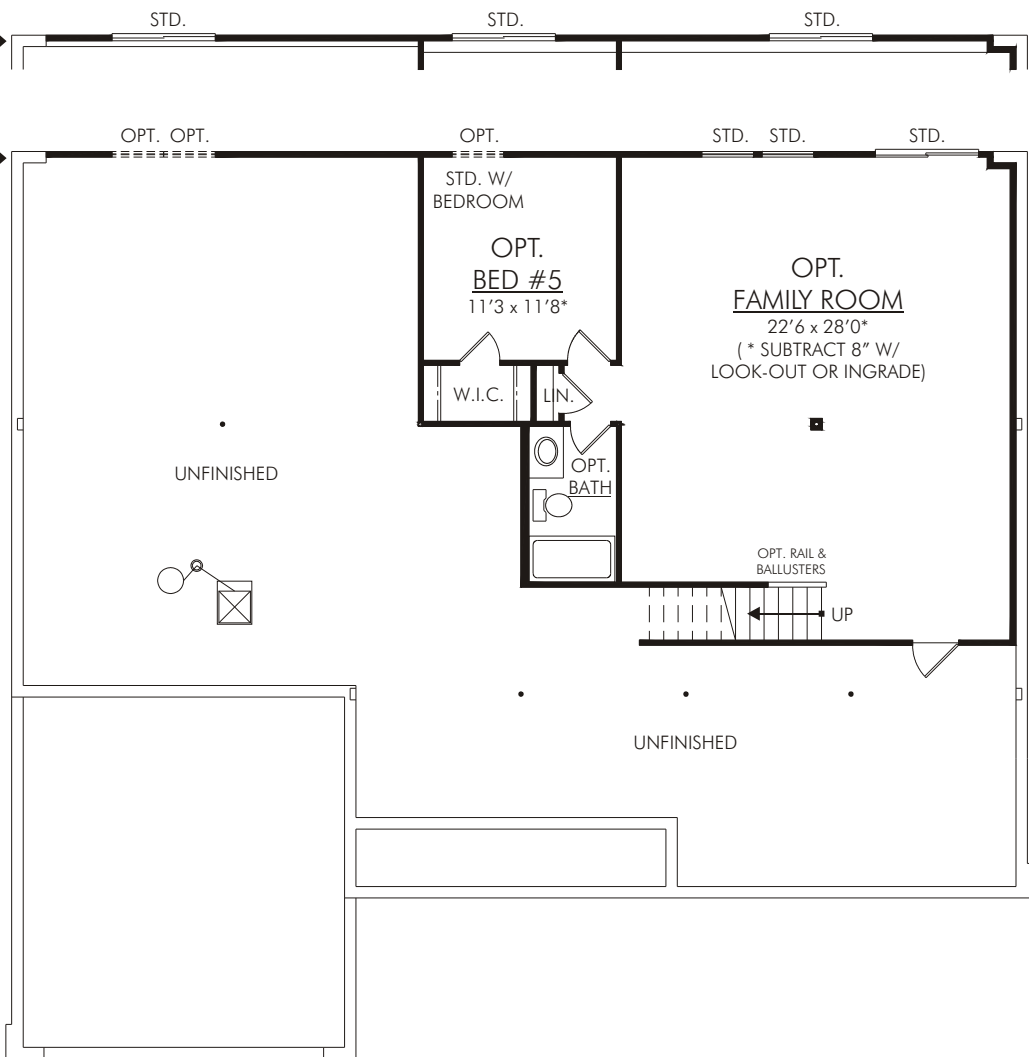


OPT. KITCHEN



OPT. 4th BEDROOM

LOOK-OUT BASEMENT  
DRAWN PER WALK-OUT BASEMENT



OPT. LOWER LEVEL PLAN