

725 GRAESER RD.

Elevation "A"

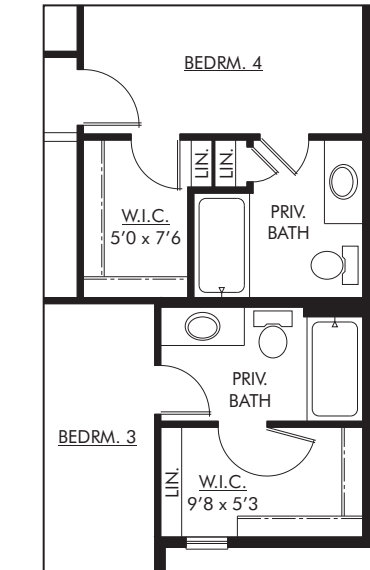
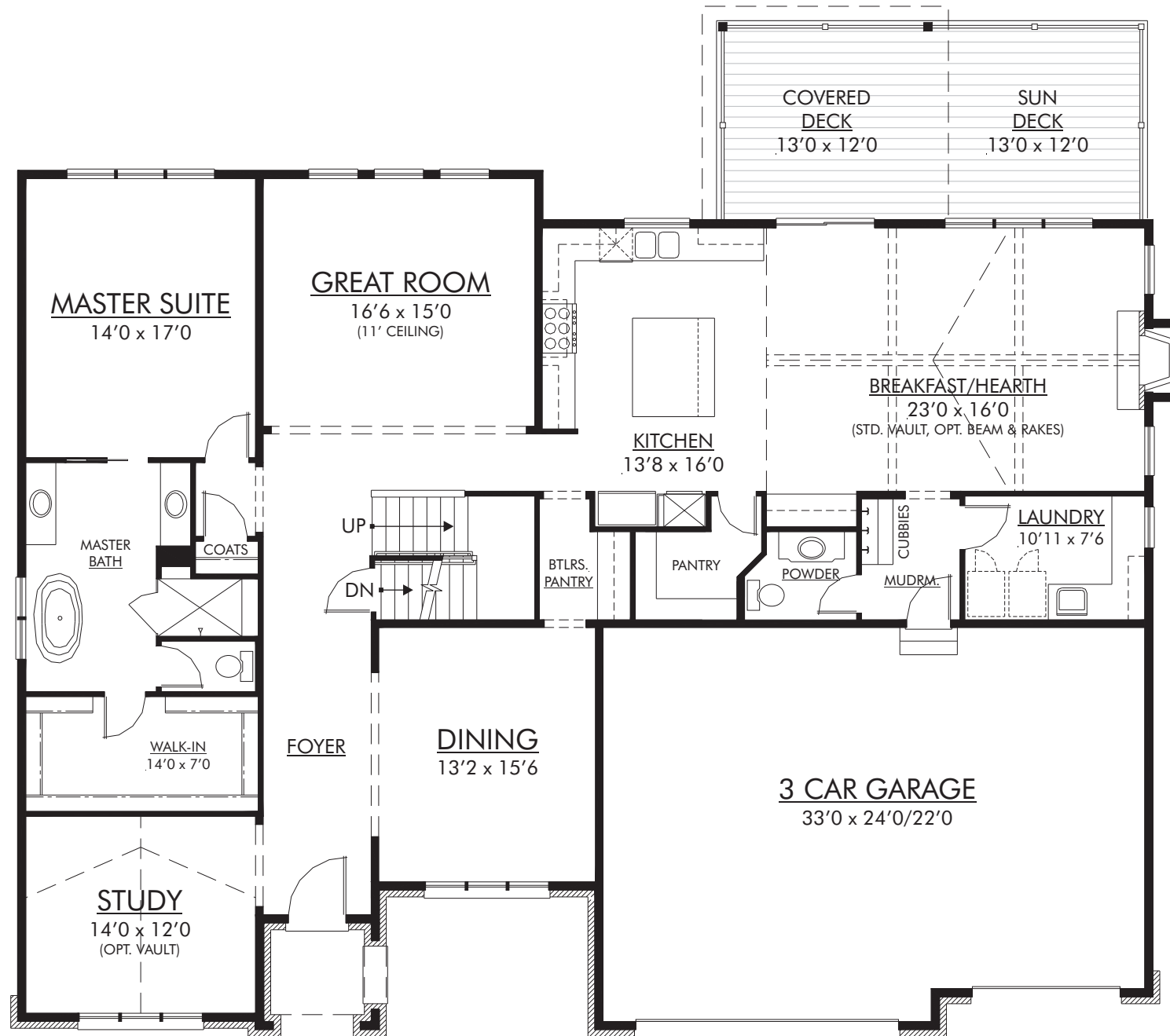


Disclaimer: plans, elevations, and renderings are an artist's conception intended to serve as a general guide, not to accurately depict the legal description of the property's walls, boundaries, dimensions, scale of rooms, and/or their relative locations. All plans subject to change without notice or obligation. 10/15/20

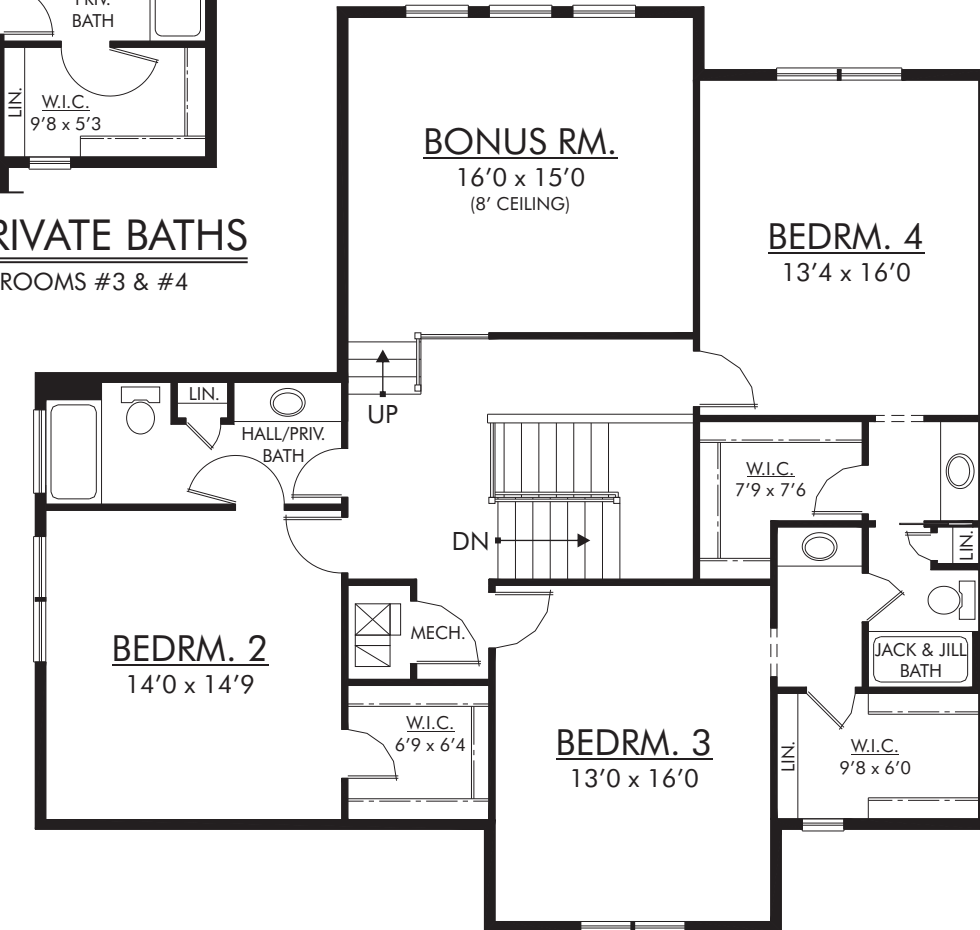


KEMP SIGNATURE HOMES

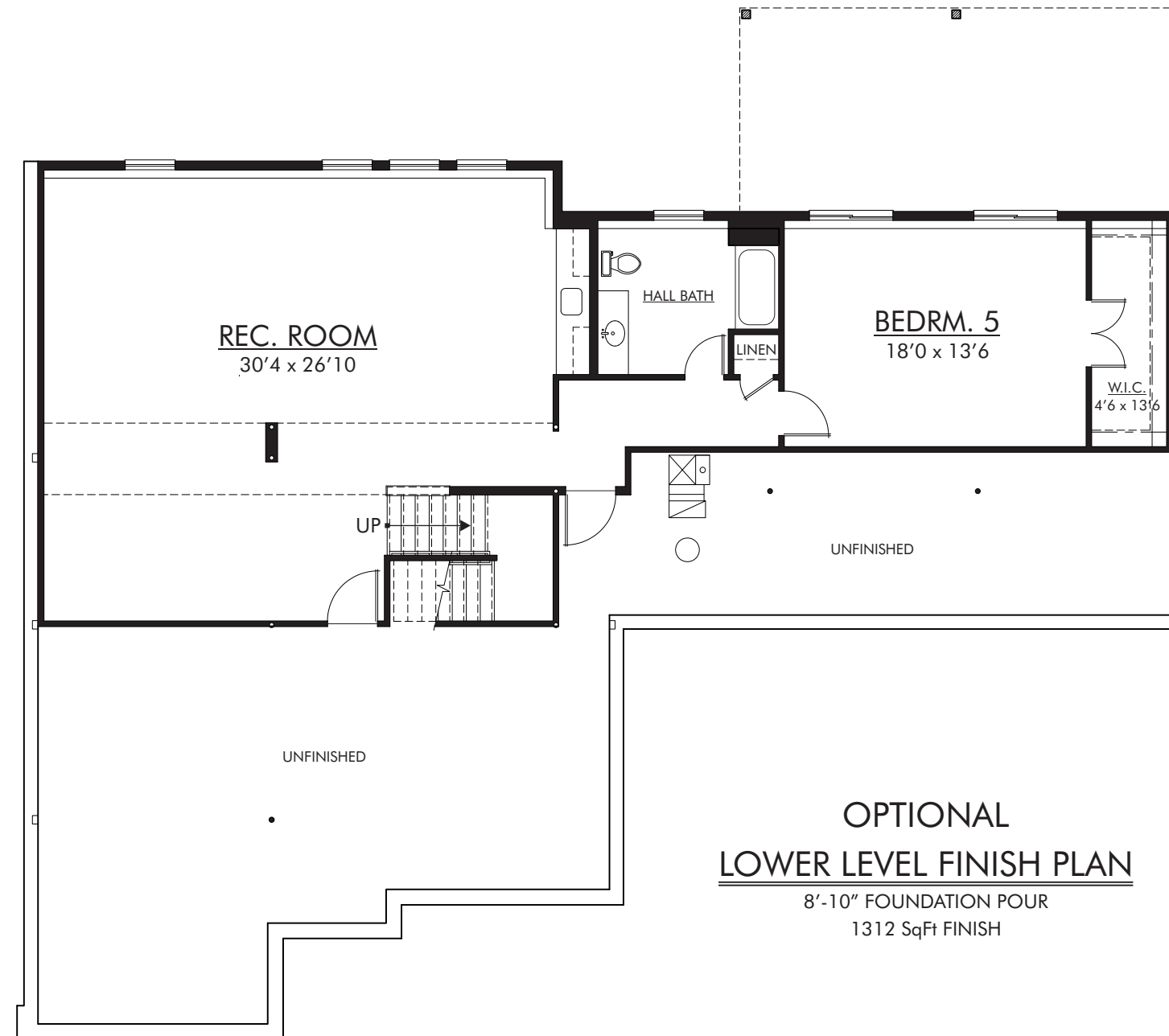
DESIGN, CRAFTSMANSHIP, & QUALITY



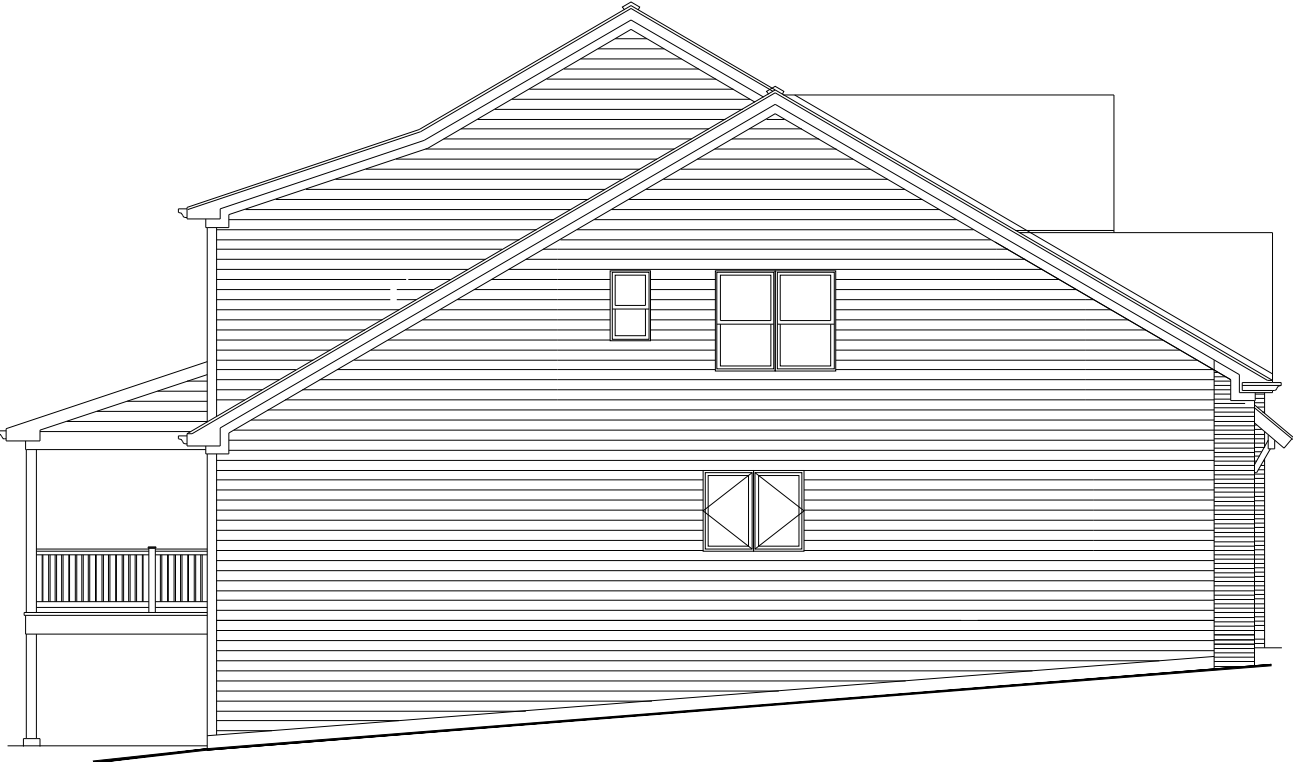
OPT. PRIVATE BATHS
 AT BEDROOMS #3 & #4



SECOND FLOOR PLAN
 9' CEILINGS UNLESS NOTED
 1572 SqFt (4,085 TOTAL)



**OPTIONAL
LOWER LEVEL FINISH PLAN**
8'-10" FOUNDATION POUR
1312 SqFt FINISH



LEFT SIDE ELEVATION



RIGHT SIDE ELEVATION



REAR ELEVATION

Disclaimer: plans, elevations, and renderings are an artist's conception intended to serve as a general guide, not to accurately depict the legal description of the property's walls, boundaries, dimensions, scale of rooms, and/or their relative locations. All plans subject to change without notice or obligation. 10/15/20