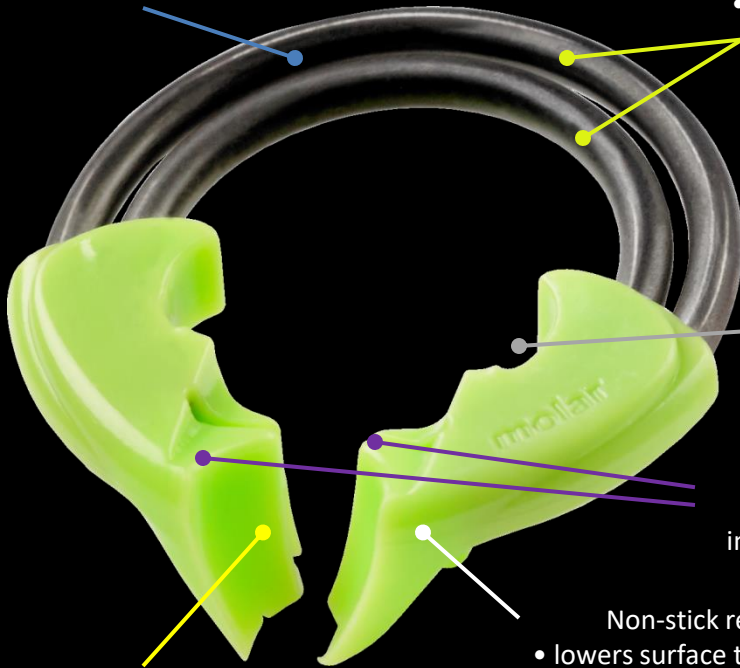




Dual NiTi Rings apply balanced separation force on mesial and distal embrasures

Dual NiTi wires:

- Provide more separation force
- Concentric, resists breakage
- Less expansion force required



Integrated forcep slots

Independent articulating interproximal separators (IPS) for improved tooth seal & separation

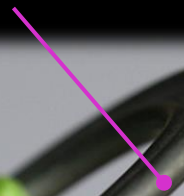
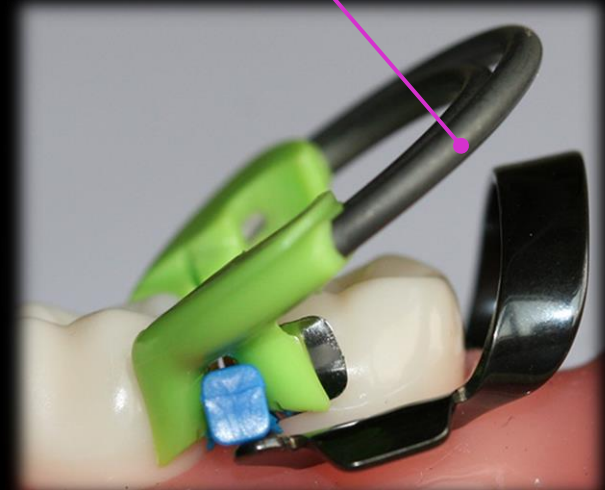
Non-stick resin (Delrin)

- lowers surface tension to prevent composite or adhesive from sticking to the resin

IPS angles match tooth morphology for:

- Significantly more ring stability
- Tighter matrix band seal
- Pop-off prevention

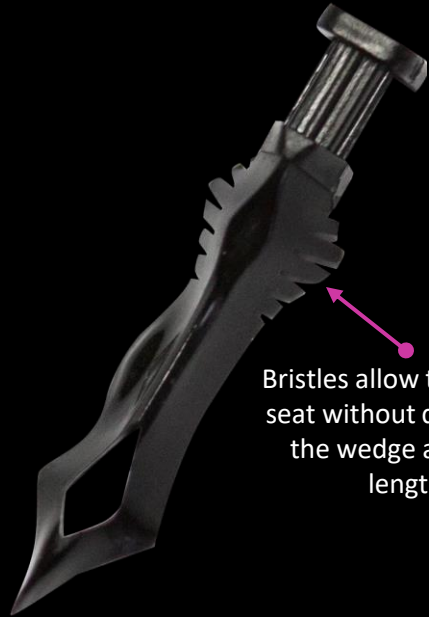
20° angle when seated eliminates rubber dam clamp or canine interference





ISO Color Coded
 5 Sizes
 2lbs separation force
 Easy to place
 Ultimate adaptation

Active Wedge



Bristles allow the ring to seat without deforming the wedge along its length

Gull wing design allows wedge to have lower profile than most wedges

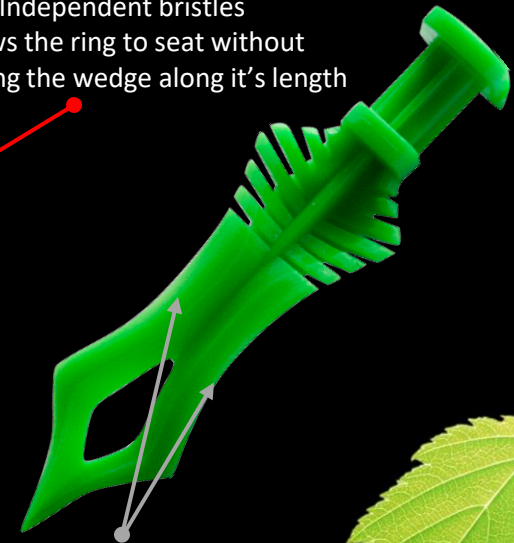
Cut-out allows for easy placement

Rebounds when fully seated holding the wedge in place

Contour to seal matrix / tooth interface

Independent bristles
 Allows the ring to seat without deforming the wedge along its length

Reinforcement ridge on the underside for better band sealing and to exert some separation force



CLINICIAN'S CHOICE
 DENTAL PRODUCTS INC.