

Start to finish in 8 hours

“Immediate Dentures in a day”/Disaster Cases

Some people really do leave it late in the day before seeking help. So late indeed that it may not be possible to take an impression without extracting some or all of the remaining teeth. Despite having put off seeking treatment for years, once they decide to seek dental care, they are often less than happy for treatment to extend over the normal 6 to 8 week period.

In such cases we can offer a denture or even complete dentures in a day. The hopeless teeth are removed first thing in the morning followed by multiple appointments during the day. Normally the denture is fitted in the late afternoon.

The two examples below illustrate this approach.

EXAMPLE 1



8.30 am: Multiple extremely mobile teeth and a completely unsatisfactory partial denture.



4.30 PM: Full upper immediate denture; Significant alteration to the natural lower teeth was also required to create an acceptable occlusal plane.

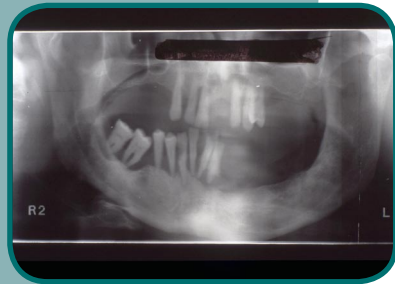
EXAMPLE 2



8.00 am: Multiple mobile upper and lower teeth: collapsed dentition: Patient had never worn a denture.



4.00 PM: Full upper and lower immediate dentures.



Services offered include:

- * Full dentures
- * Partial dentures
- * Immediate dentures
- * Overdentures on implants
- * Continuing professional development

272 Arundel Street
Portsmouth
Hampshire
PO1 1NT
Tel: 02392 829679
Fax: 02392 864477