



**SALTWATER**  
RESIDENCES





# FACT SHEET

ADDRESS	1 Terence Drive, Oxenford 4210
APARTMENT / LEVELS	14 Boutique Residences
APARTMENT SIZES AND PRICES	14 residences from 136m <sup>2</sup> - 165m <sup>2</sup> Residence Type A from \$449,950 - \$459,950 Residence Type B from \$414,950 - \$424,950 All units come with 2 Car Parks
LOCATION ADVANTAGES	Located within minutes to: <ul style="list-style-type: none"><li>• Westfield Helensvale - 8 min</li><li>• Gold Coast Uni Hospital - 13 min</li><li>• Medical Facilities - 7 min</li><li>• Schools - 3 min</li><li>• Recreational Facilities - 2 min</li><li>• Theme Parks - 8 min</li><li>• Griffith University - 13 min</li><li>• M1 Access - 4 min</li></ul>
TRANSPORTATION	Heavy Rail - 7 min drive Bus Service - 9 min walk Easy Access to the M1 - 4 min
INTERIOR DECORATION	Unique floor plans together with carefully selected colours and textures, generous kitchens and bathrooms.
DEVELOPER	Chloel Group
BODY CORPORATE FEES	UNIT A - \$37.14 per week    UNIT B - \$34.34 per week
BUILD TIME	August - September 2017







# ABOUT THE DEVELOPER



Chloel Group is a boutique lifestyle orientated property development company with a portfolio of local and national clients. The people behind Chloel Group have over 35 years combined experience in the property development industry. Chloel Group is leading the industry with a stellar reputation and a passion for development. Chloel Group aims to provide development services that transform, design, lead and provide our clients with the highest calibre of service across all business sectors.

With years of combined experience, Chloel Group uses expertise, leadership and knowledge to be at the forefront of townhouse and midrise residential development opportunities. Chloel Group is developing several projects at different phases of the development cycle. These projects include:

- 6 boutique three bedroom units at Bribie Island (Constructed)
- 14 townhouses at Oxenford on the Gold Coast (currently under construction)
- 57 Townhouses on the Gold Coast (in DA stage)
- 111 Luxury apartments on the Gold Coast (Pre-Sale Stage)



LIVE LIFE IN  
TRANQUIL  
SURROUNDS



# CONVENIENTLY LOCATED

Family friendly Pacific Pines has the best of both worlds – work in Brisbane and enjoy leisurely weekends on the coast. Located within a short drive to the M1, 25 minutes to Broadbeach and only 45 minutes to Brisbane CBD.

It's in a prime location, within close proximity to Westfield Helensvale, famous theme parks, shops and many schools.

Located within 3 minutes drive to both Jubilee Primary and Gaven State School, 7 minutes to Pacific Pines High and 13 minutes to Griffith University Gold Coast Campus.

With all of these facilities so close by it's no wonder that Pacific Pines is fastly growing as one of the coast's most sought after locations.



1



3

4

2

1

**MOVIEWORLD**

2

**GOLD COAST  
UNI HOSPITAL**

3

**GRIFFITH  
UNIVERISTY**

4

**BROADWATER  
PARKLANDS**





- W** SALTWATER RESIDENCES
- |                                       |   |
|---------------------------------------|---|
| 1. JUBILEE PRIMARY SCHOOL             | 11. WET N WILD THEME PARK                 |
| 2. GAVEN STATE SCHOOL                 | 12. WESTFIELD SHOPPING CENTRE             |
| 3. PARKLAKE STATE PRIMARY SCHOOL      | 13. HELENSVALE STATION (G-LINK)           |
| 4. PACIFIC PINES STATE PRIMARY SCHOOL | 14. HELENSVALE LIBRARY                    |
| 5. PACIFIC PINES STATE HIGH SCHOOL    | 15. HELENSVALE TOWN CENTRE                |
| 6. HELENSVALE STATE HIGH SCHOOL       | 16. KOOL KIDS CHILDCARE                   |
| 7. SUPERFISH SWIMMING SCHOOL          | 17. BRIGHT HORIZONS AUSTRALIA CHILDCARE   |
| 8. COLES SUPER MARKET PACIFIC PINES   | 18. GOODSTART EARLY LEARNING              |
| 9. PACIFIC PINES TOWN CENTRE          | 19. YOUNG DISCOVERERS CHILDCARE           |
| 10. MOVIE WORLD THEME PARK            | 20. GAVEN EARLY LEARNING CHILDCARE CENTRE |

- 45 MINS TO BRISBANE
- 15 MINS TO SURFERS PARADISE
- 13 MIN TO GRIFFITH UNIVERSITY
- 13 MIN TO LIGHT RAIL / TRAM



# BE CONSUMED BY PICTURESQUE OUTLOOKS



# INSPIRED DESIGN

1

## EXTERIOR

Architect designed apartments.

2

## MASTER BEDROOM

Wake up to picturesque views.

3

## ENSUITE

Combining form and function.



1



1



2



3



4

## KITCHEN

State-of-the-art kitchen with premium appliances.

FUNCTIONAL  
SPACIOUS  
DESIGN







5

# INSPIRED LIVING

5

## LIVING ROOM

Architect open planned living areas.

6

## PARKLANDS

Unmatched natural views.



6

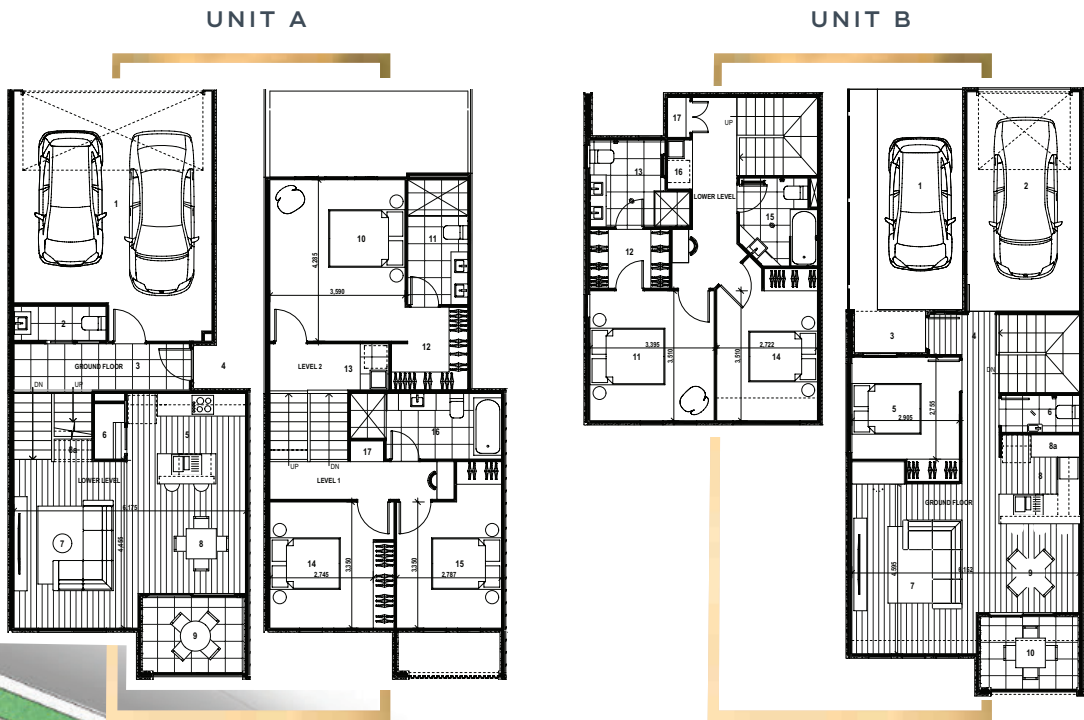




# WAKE UP TO NATURAL BEAUTY



# ARCHITECTURAL DESIGN







# SALTWATER

RESIDENCES

[SALTWATERRESIDENCES.COM.AU](http://SALTWATERRESIDENCES.COM.AU)

[chloelgroup.com.au](http://chloelgroup.com.au)