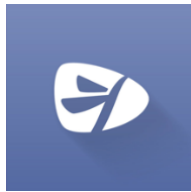


## Remote learning for Year 7 and 8 – Accessing Firefly

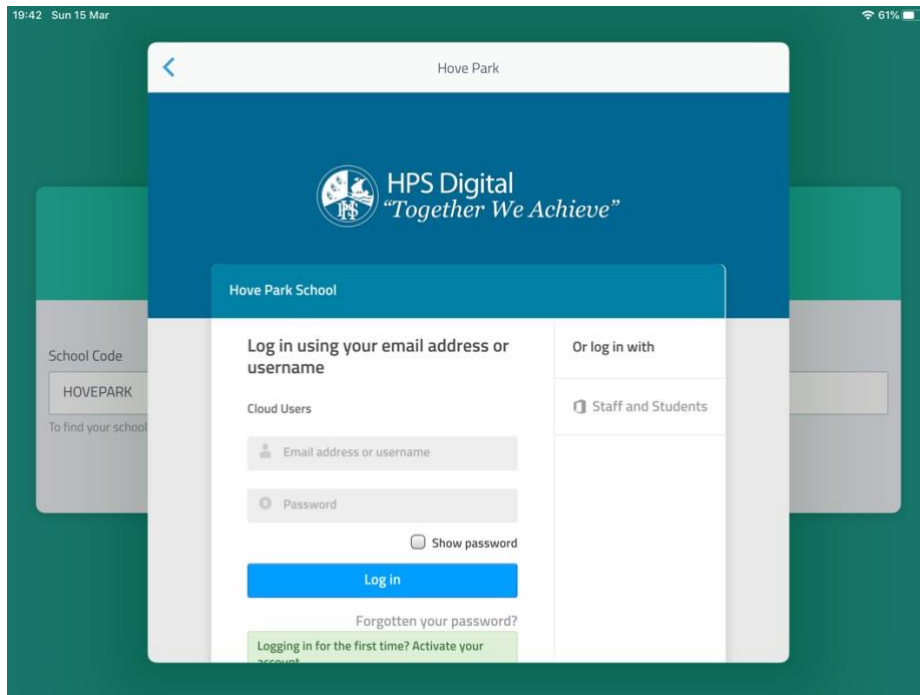


*When school is suspended and Remote Learning is implemented, guidelines are put in place for Year 7 and 8. The intended outcome is that the curriculum is at the forefront of the work we set and, as far as possible, student progress should not be negatively impacted. To deliver remote learning, **Firefly** will be used across the school following the Remote Learning Timetable*

*You can access Firefly and subject specific content online from your iPad along with all the other apps you use to facilitate your learning. Remember that you can also access Firefly from a web browser [here!](#)*

When opening the Firefly app for the first time you'll be required to enter the **School Code**.  
The **School Code** is: **HOVEPARK**

After entering the **School Code**, the following page will be displayed.  
Tap **Staff and Students** on the right-hand side to access the correct login page for staff and students.



After tapping **Staff and Students** you'll be presented with the below login page.

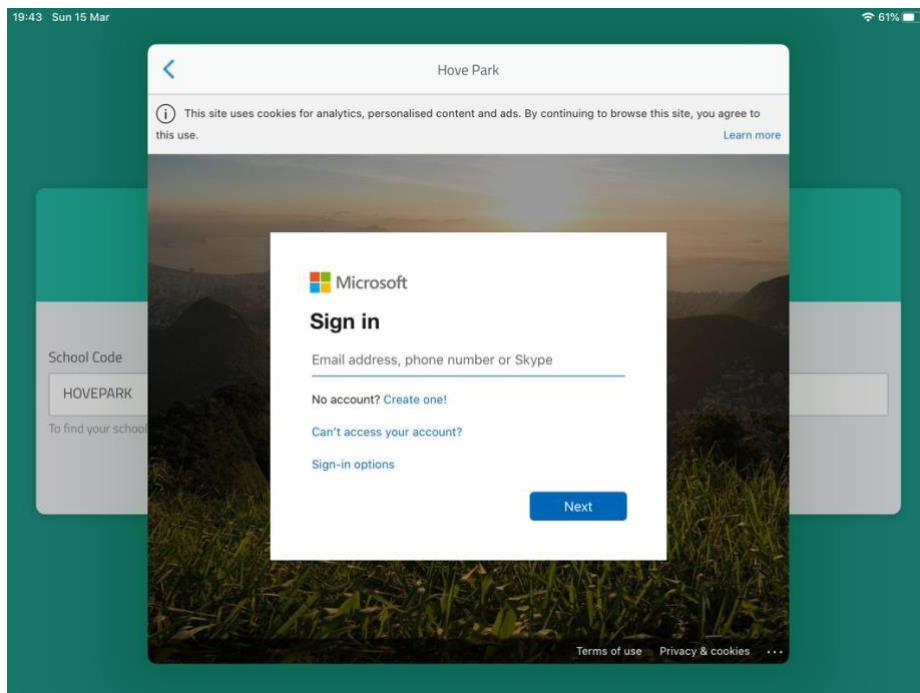
Log in using your **School Email Address** and **Password**.

Student email addresses are in the format:

**Joe Bloggs – Y7 = [19bloggsj@hovepark.org.uk](mailto:19bloggsj@hovepark.org.uk)**

**Joe Bloggs – Y8 = [18bloggsj@hovepark.org.uk](mailto:18bloggsj@hovepark.org.uk)**

**Joe Bloggs – Y9 = [17bloggsj@hovepark.org.uk](mailto:17bloggsj@hovepark.org.uk) Etc.**



When accessing Firefly via the school website the correct login page will be displayed by default and you will not be required to enter the **School Code** or select **Staff and Students**.