

NORTHWOOD

MULTI-SECTION



REDMAN  HOMES®





ABOUT US

Redman Homes is one of the oldest and most respected homebuilders in America. Founded in 1937, Redman pioneered factory home construction and continues to lead advances in quality control, design and home value today. Through experience and innovation we've harnessed production line efficiency and, paired with our high-quality craftsmanship, created a process that delivers homes that meet our superior standards.

A place to call your own

Beyond just building you a house, we're committed to providing you and your family with a home to make memories in that will last a lifetime. Somewhere you can feel secure. A place you can call your own. A home that fits your lifestyle and has your own personal touch. Whether you're an active young family constantly on the go or empty nesters ready to simplify, just relax – we have a home that's right for you.

More choice, more freedom

Our vast selection of floor plans, color choices and options give you the freedom to express your personal style and fit your home around your life.

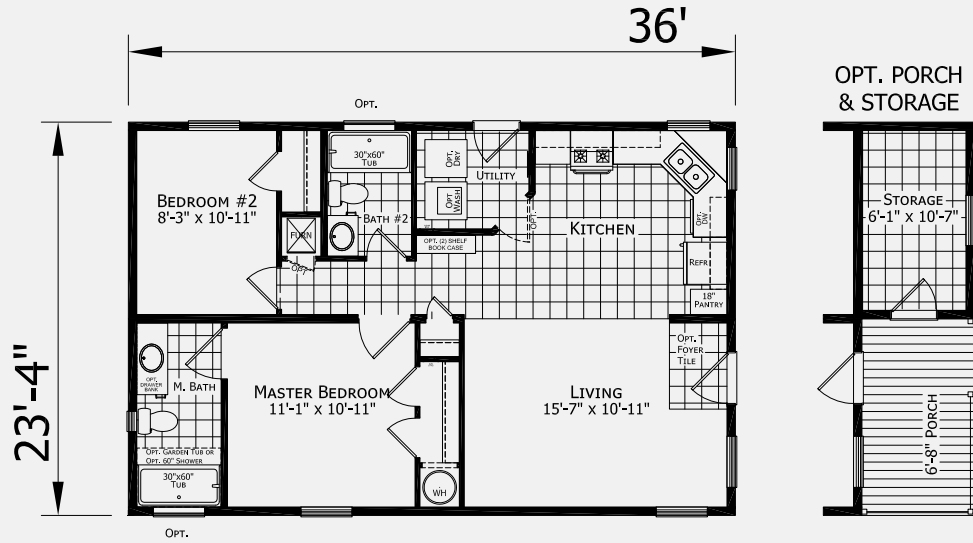
Building the best

We build each and every home to meet or exceed a strict national or state building code, and we set even higher standards for ourselves. Focusing on the things you don't see as well as the things you do, we monitor and inspect our homes at every stage of construction. From the plumbing system to the electrical wiring, from the kitchen cabinets to the closets in the bedrooms – every home we build undergoes rigorous quality inspections to ensure we're providing you with nothing but our best.

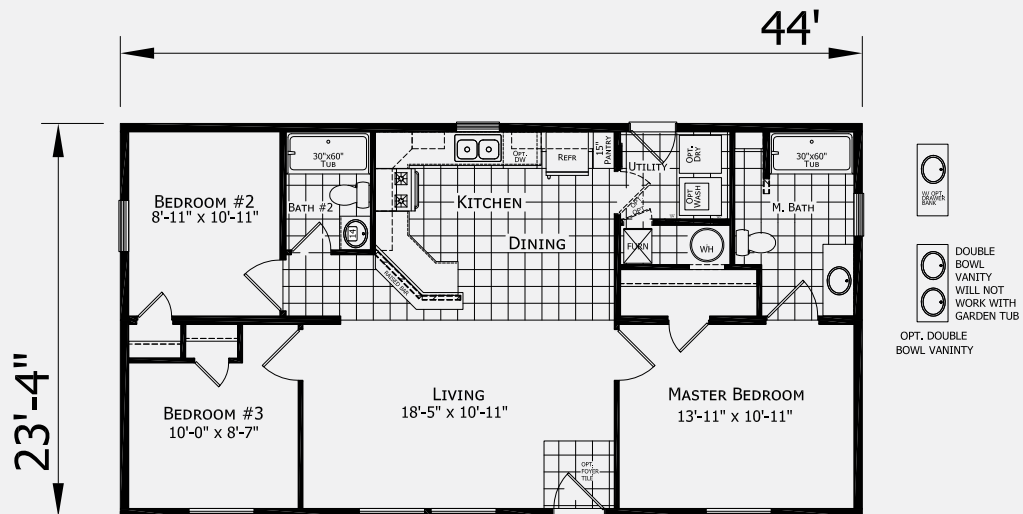
The quality you expect

To build the best, we use the best. To meet your expectations of quality – and ours – we use only the highest-quality building materials and trusted national brand names. From insulation and fixtures to flooring and appliances, we only buy components from suppliers who share our commitment to quality. By using the best, we're confident we can build you a home with the lasting value you'll appreciate for years to come. Your housing consultant can tell you more about the specific brands used in our homes.

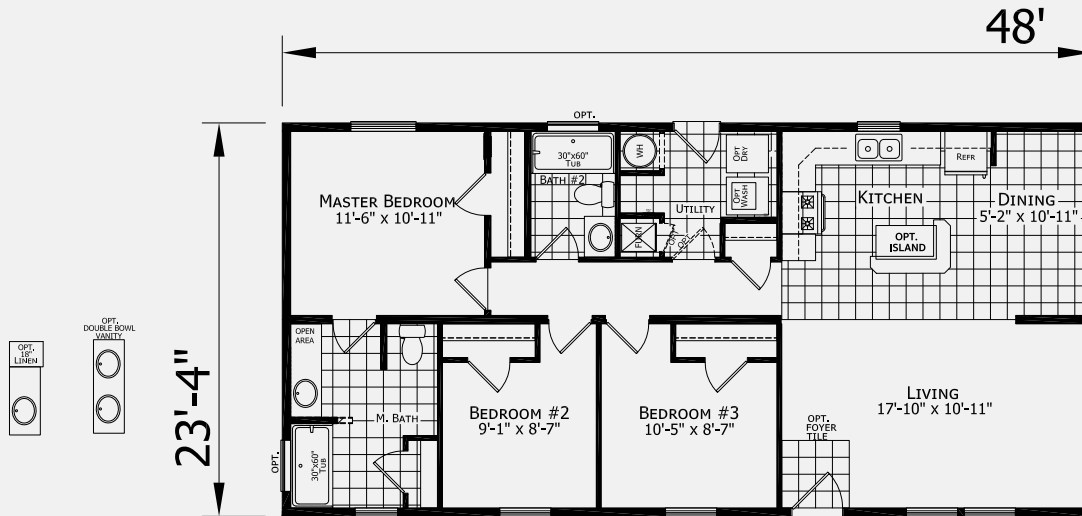
B23602 | 2 Bed-2 Bath
840 SQ. FT.



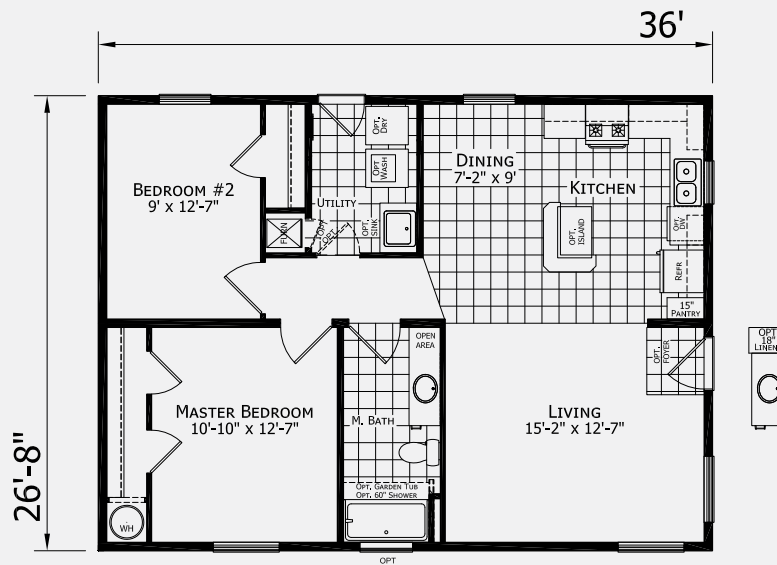
B24401 | 3 Bed-2 Bath
1027 SQ. FT.



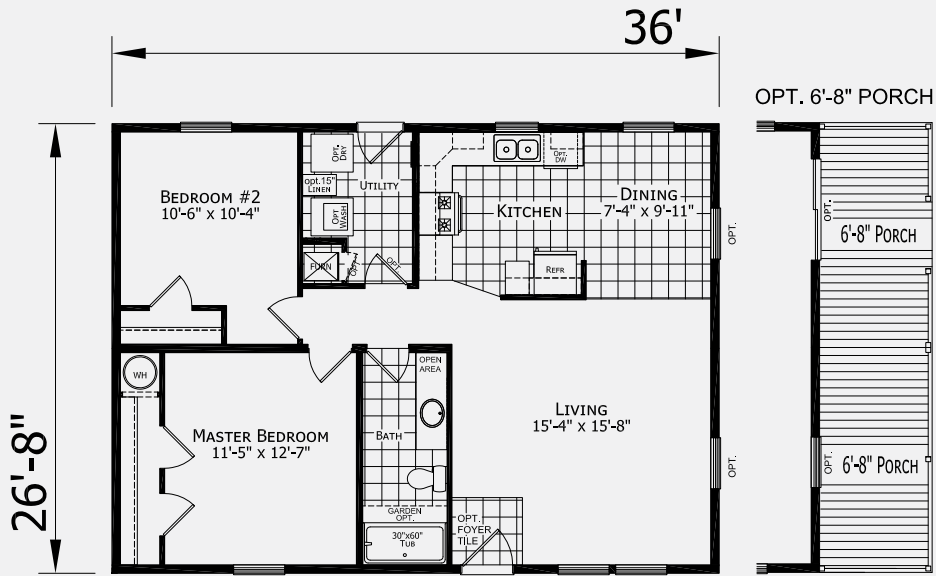
B24802 | 3 Bed-2 Bath
1120 SQ. FT.



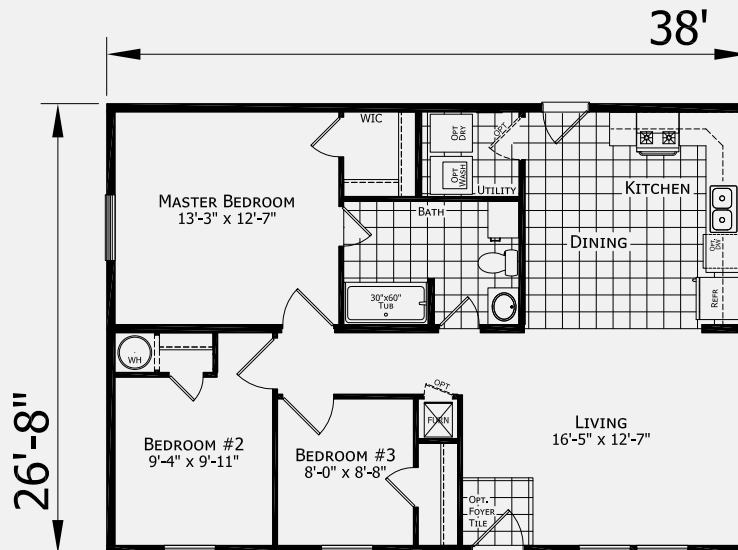
A23601 | 2 Bed-1 Bath
960 SQ. FT.



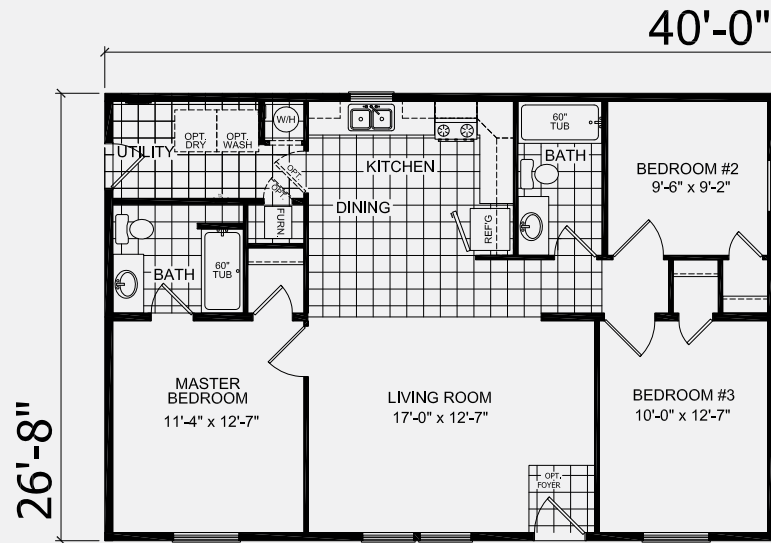
2 Bed-1 Bath
960 SQ. FT.



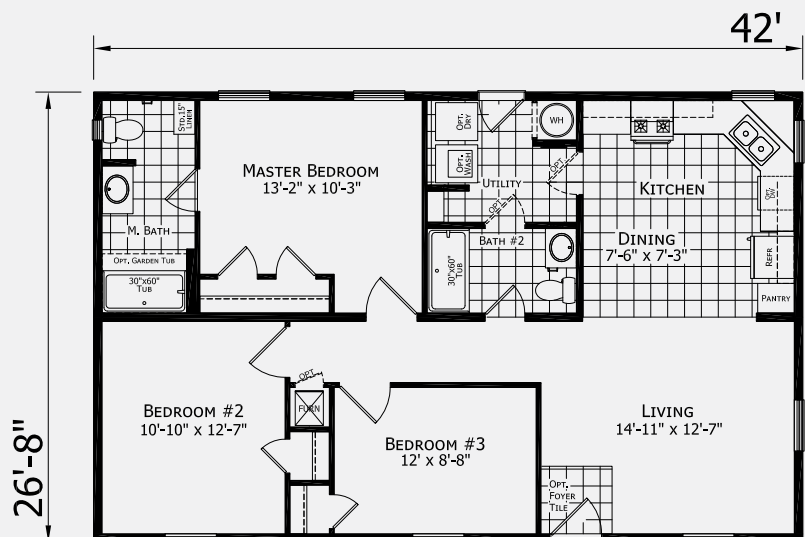
3 Bed-1 Bath
1013 SQ. FT.



A34001 | 3 Bed-2 Bath
1067 SQ. FT.



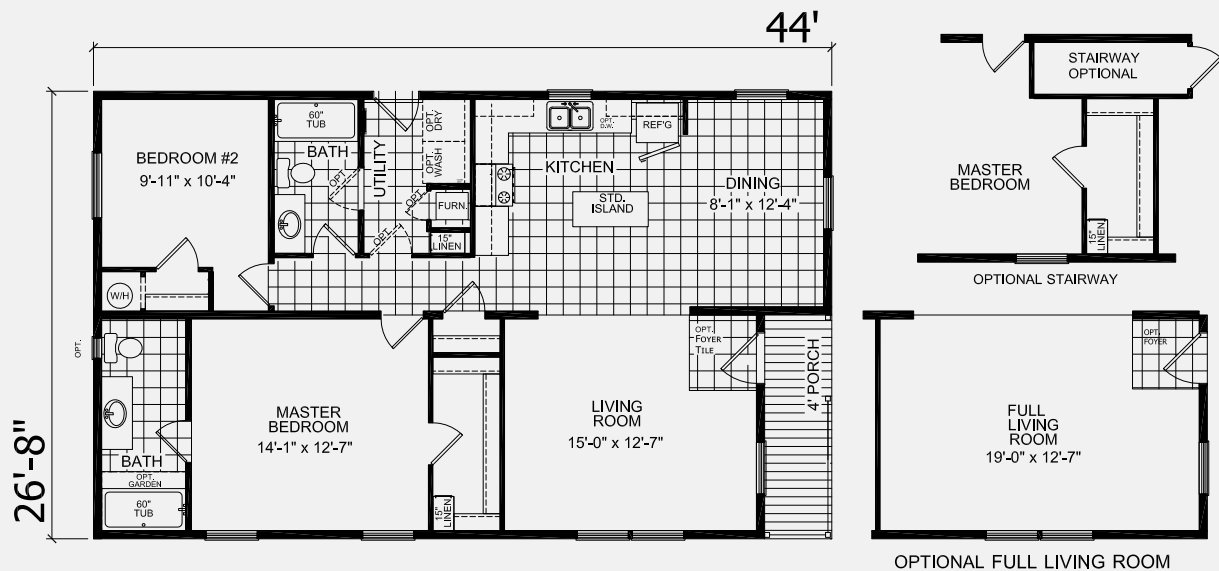
A24202 | 3 Bed-2 Bath
1120 SQ. FT.



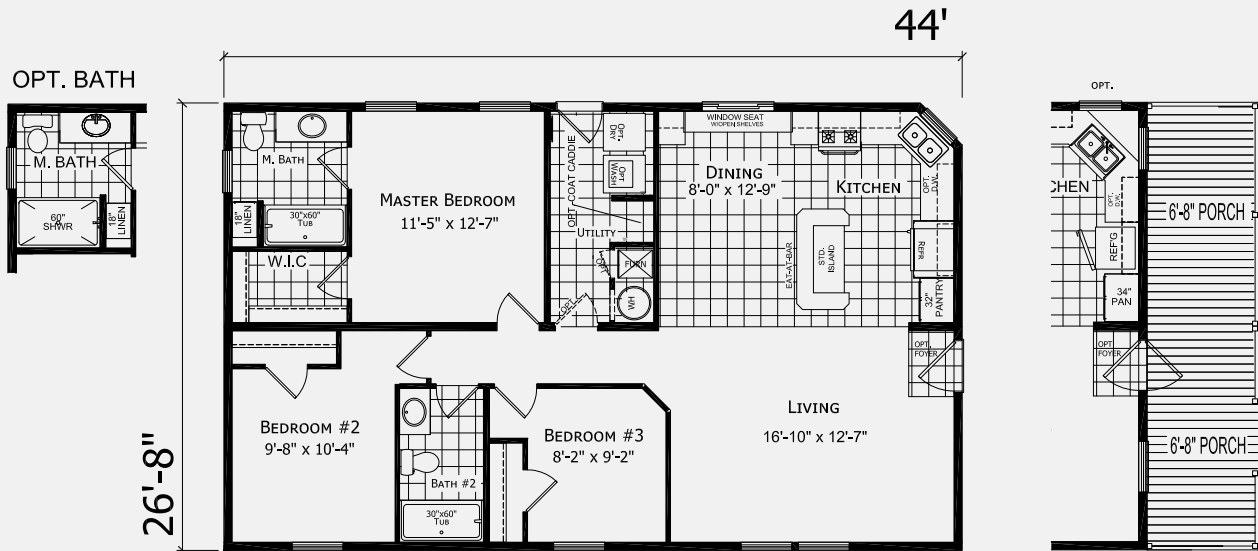
A24402 | 3 Bed-2 Bath
1173 SQ. FT.



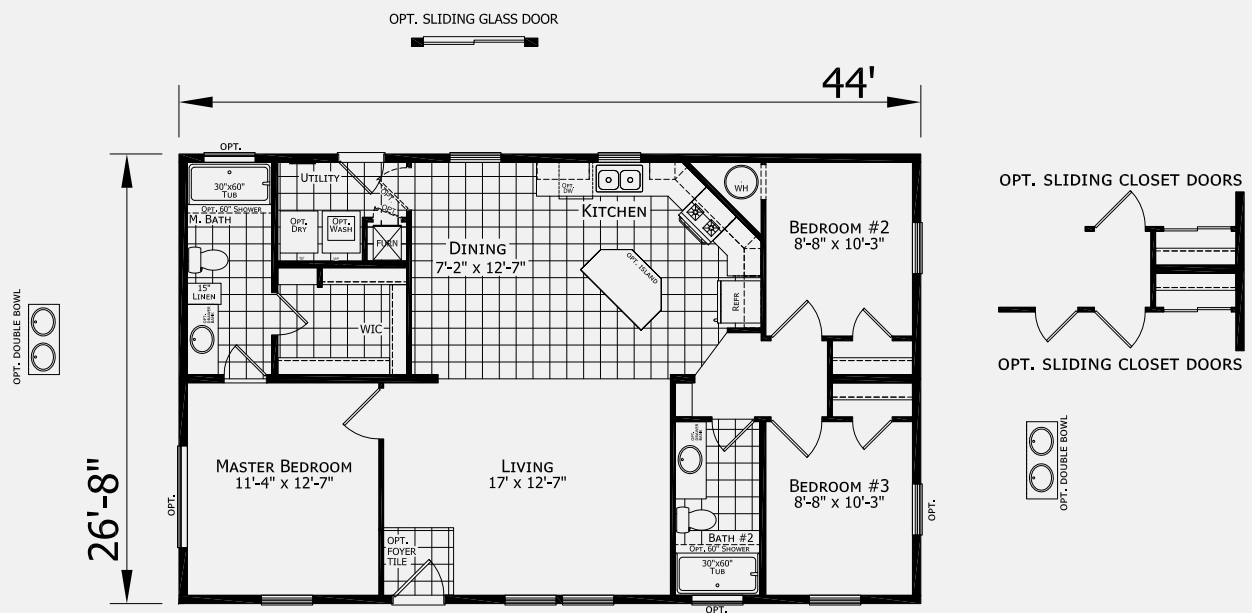
A24404 | 2 Bed-2 Bath
1120 SQ. FT.



A24405 | 3 Bed-2 Bath
1173 SQ. FT.



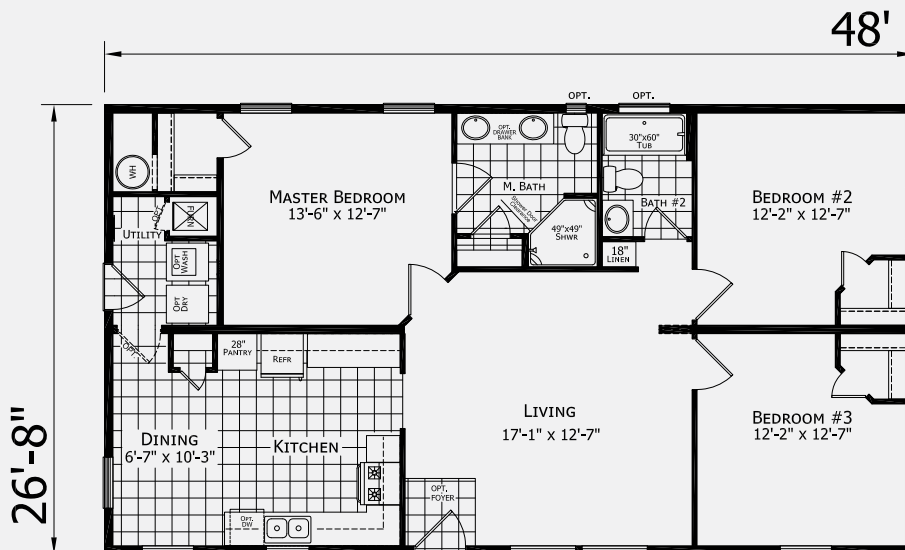
A24407 | 3 Bed-2 Bath
1173 SQ. FT.



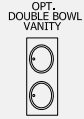
A74650 | 3 Bed-2 Bath
1227 SQ. FT.



A24801 | 3 Bed-2 Bath
1280 SQ. FT.



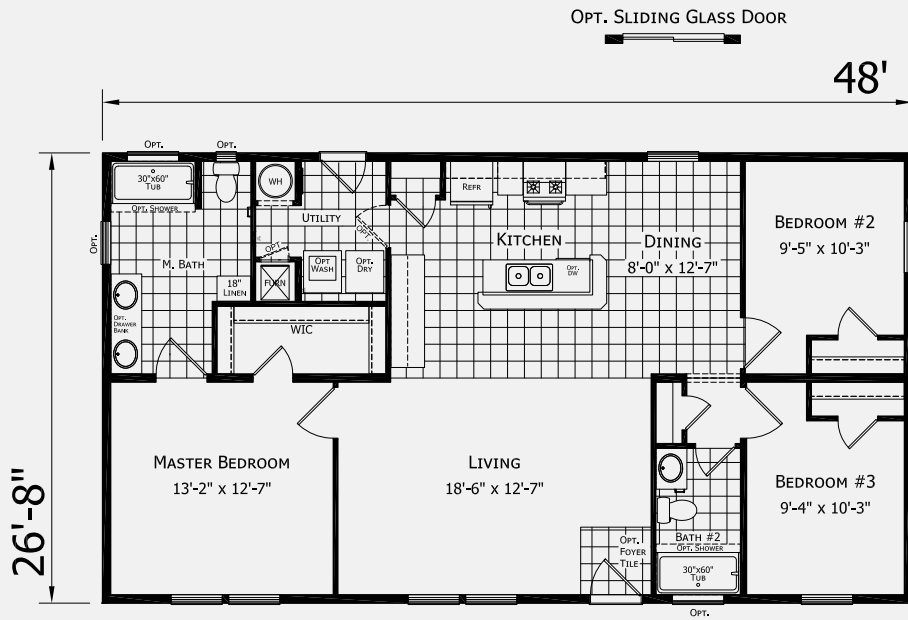
3 Bed-2 Bath
1280 SQ. FT.



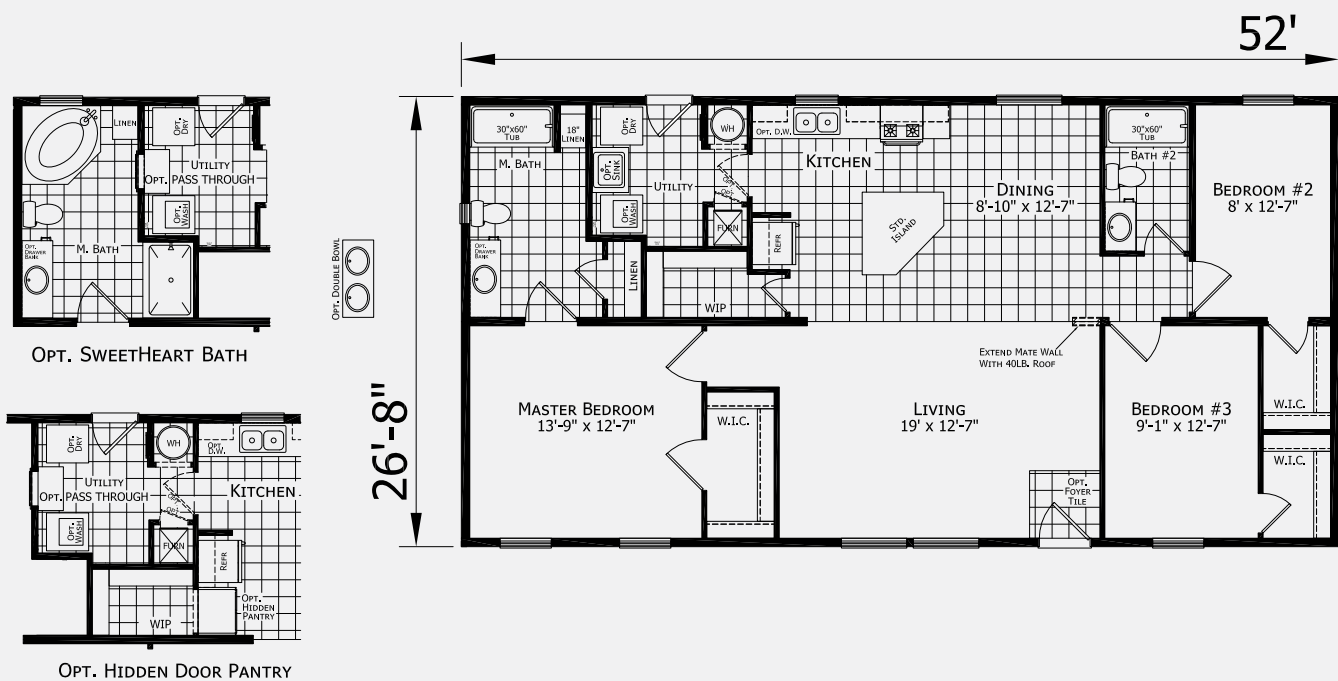
3 Bed-2 Bath
1280 SQ. FT.



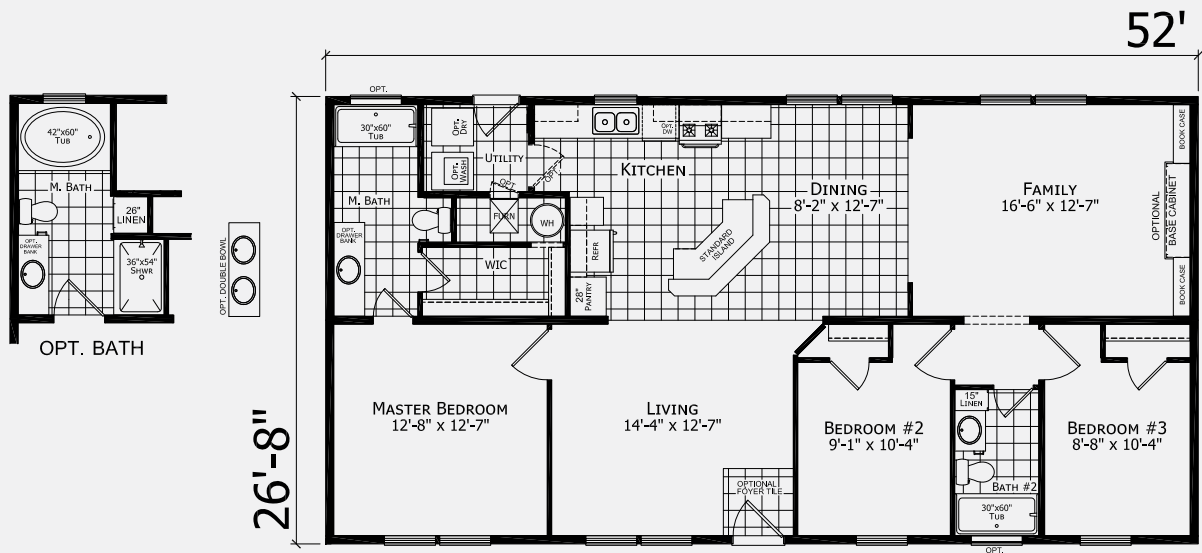
A44827 | 3 Bed-2 Bath
1280 SQ. FT.



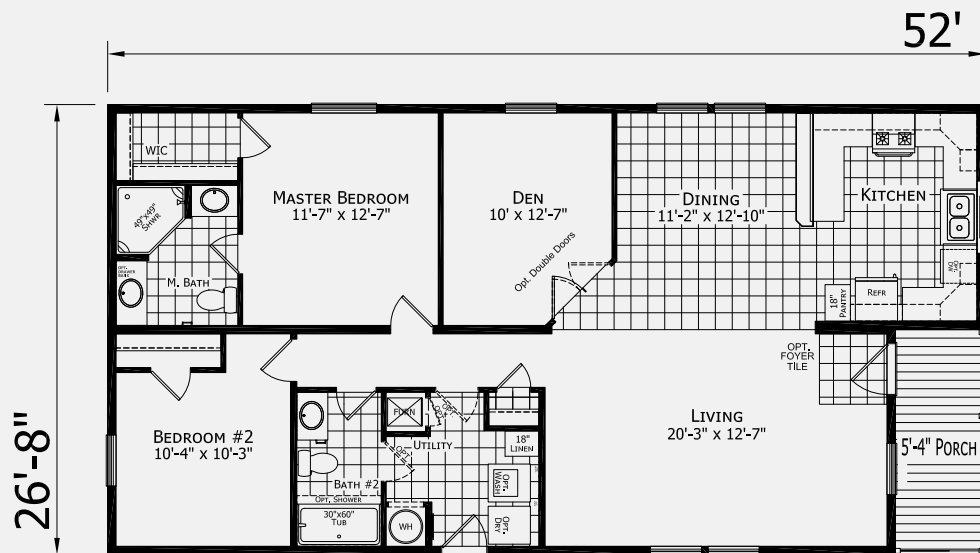
A25201 | 3 Bed-2 Bath
1387 SQ. FT.



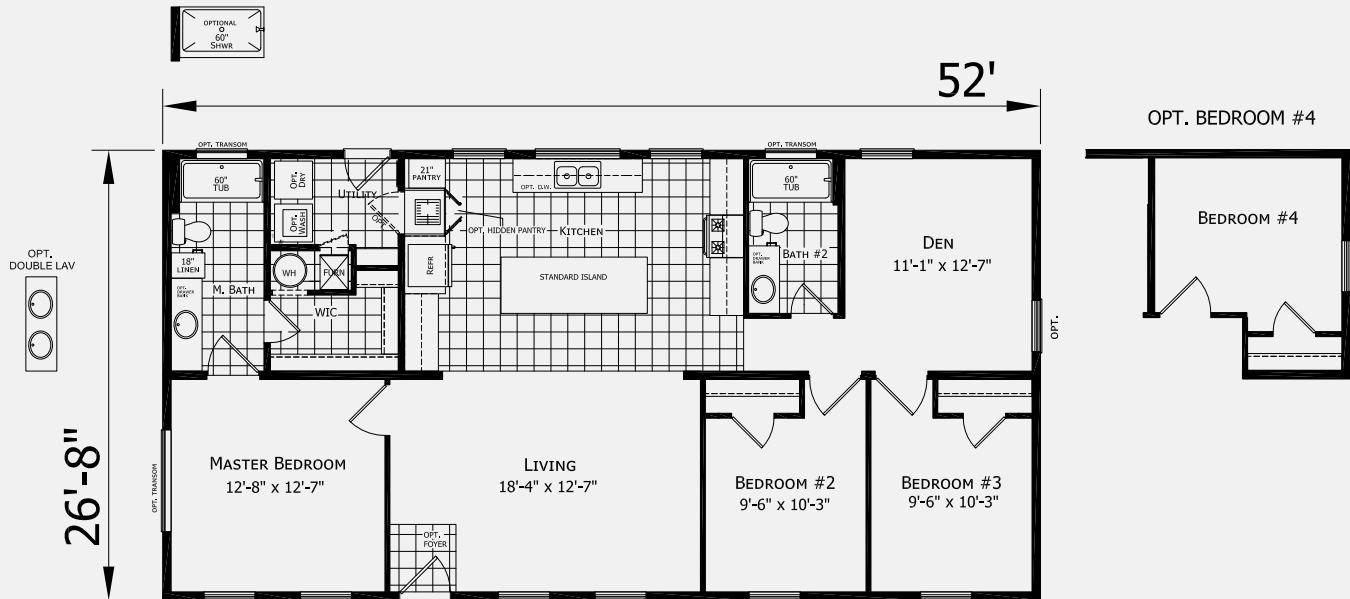
A25202 | 3 Bed-2 Bath
1387 SQ. FT.



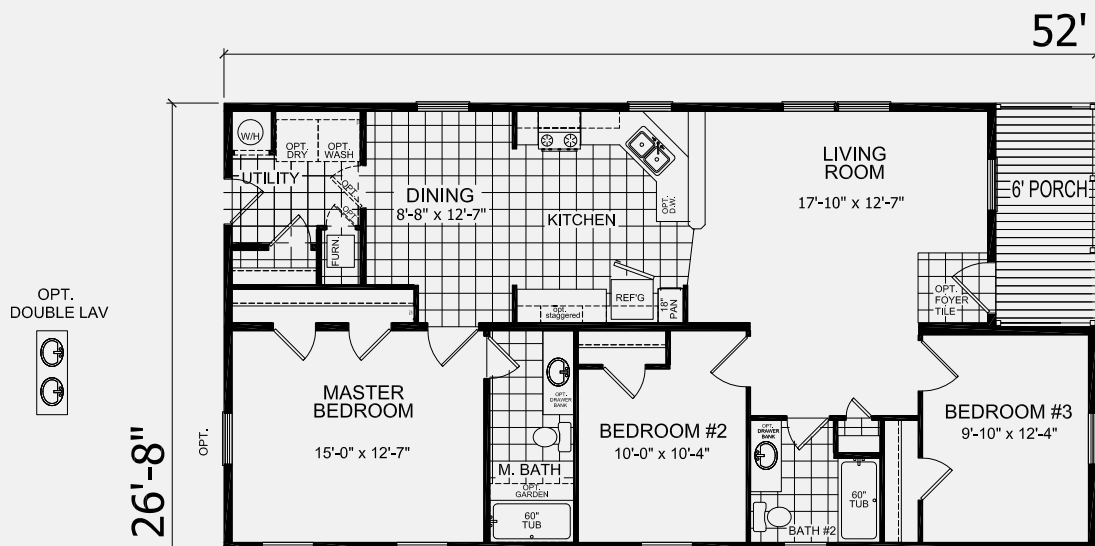
A25209 | 2 Bed-2 Bath
1316 SQ. FT.



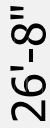
A25212 | 3 Bed-2 Bath
1387 SQ. FT.



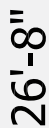
A25256 | 3 Bed-2 Bath
1307 SQ. FT.



3 Bed-2 Bath
1387 SQ. FT.



3 Bed-2 Bath
1387 SQ. FT.

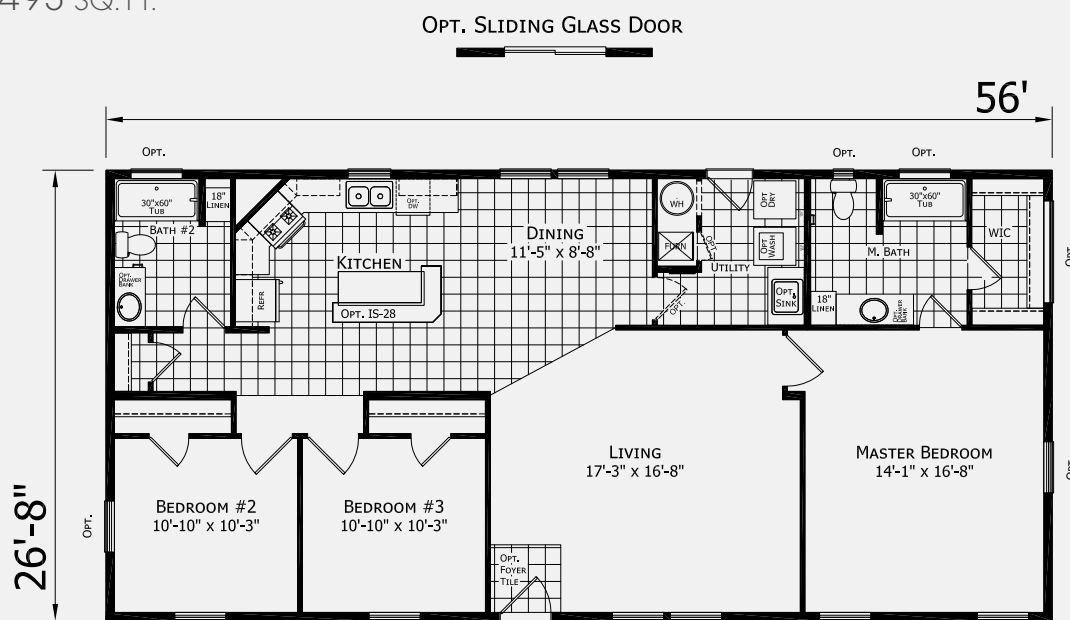
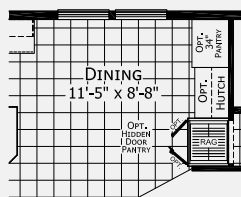


A25604 FAMILY OF PLANS

56'

3 Bed-2 Bath
1493 SQ. FT.

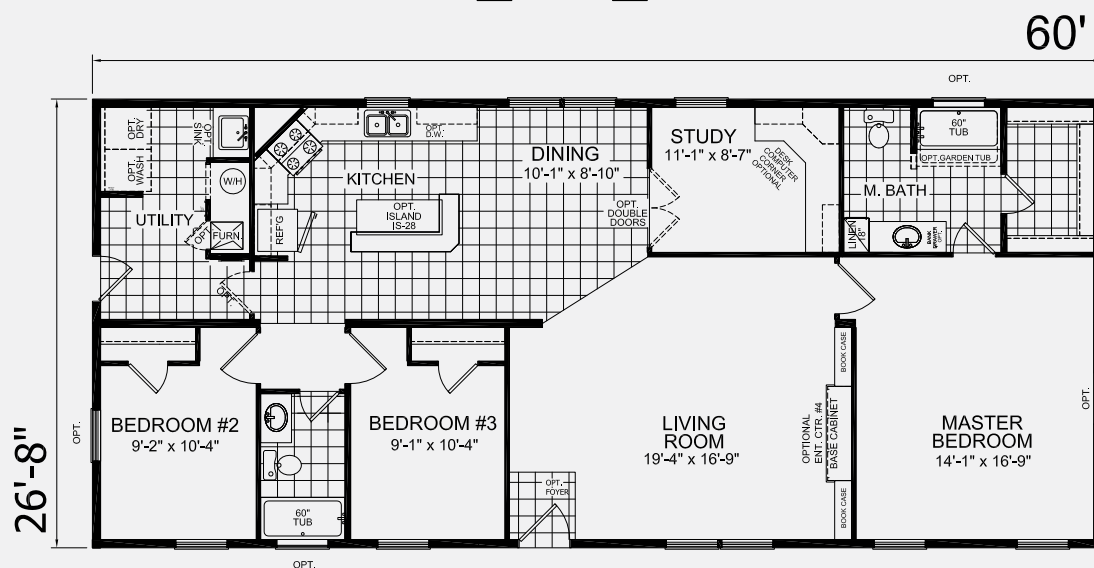
OPT. PANTRY / HUTCH
/ HIDDEN PANTRY



60'

3 Bed-2 Bath
1600 SQ. FT.

OPT. SLIDING GLASS DOOR



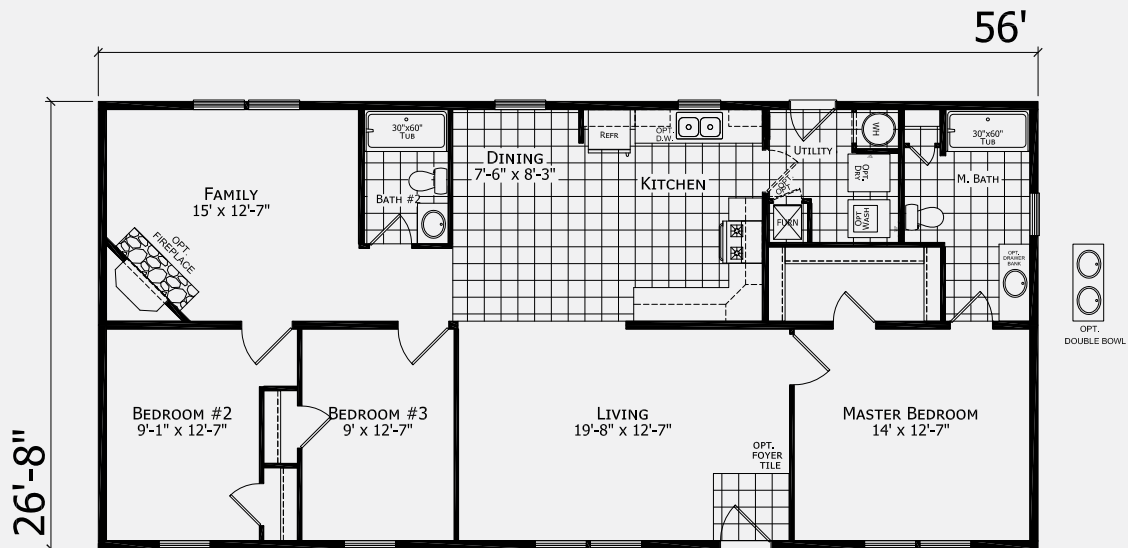
4 Bed-2 Bath
1707 SQ. FT.



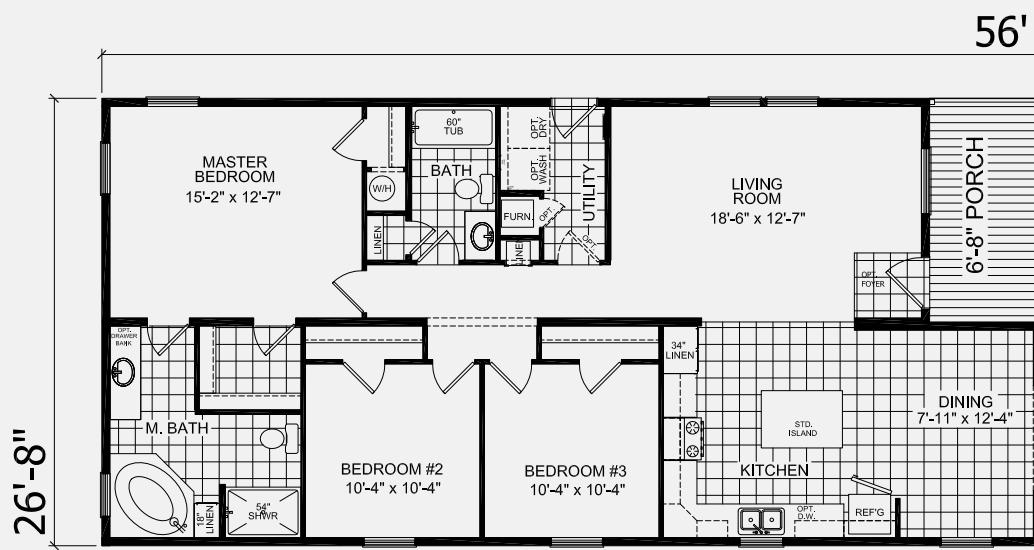
4 Bed-2 Bath
2027 SQ.FT.



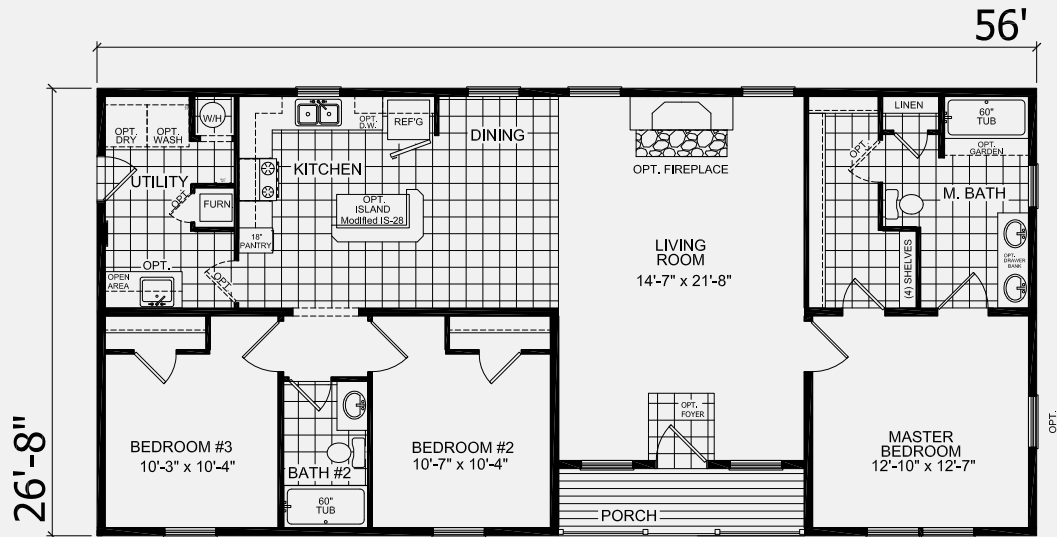
A25601 | 3 Bed-2 Bath
1493 SQ. FT.



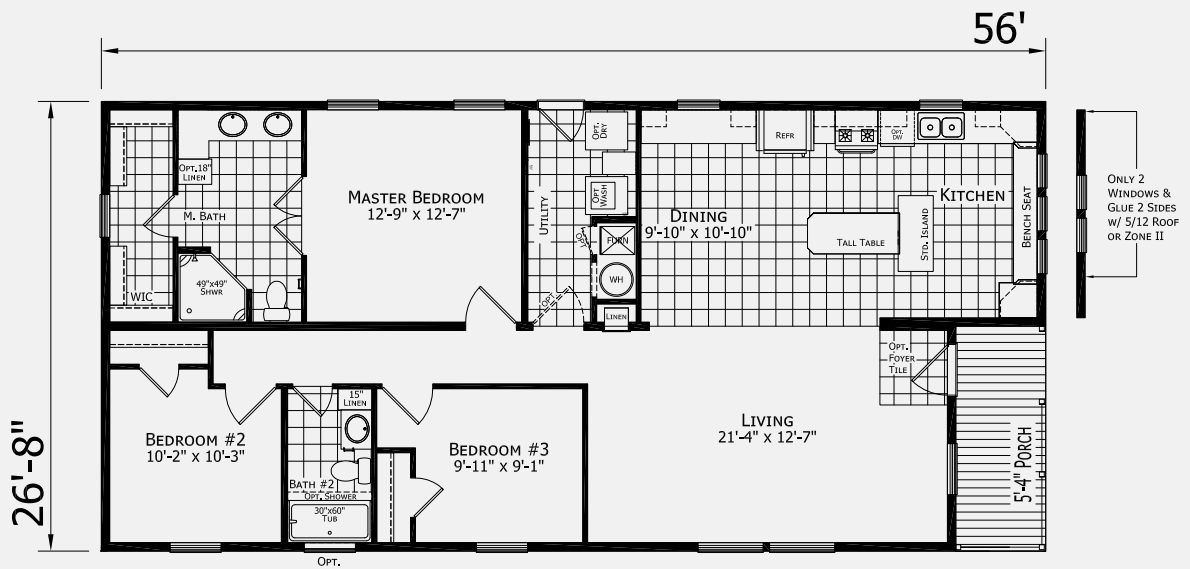
A25605 | 3 Bed-2 Bath
1404 SQ. FT.



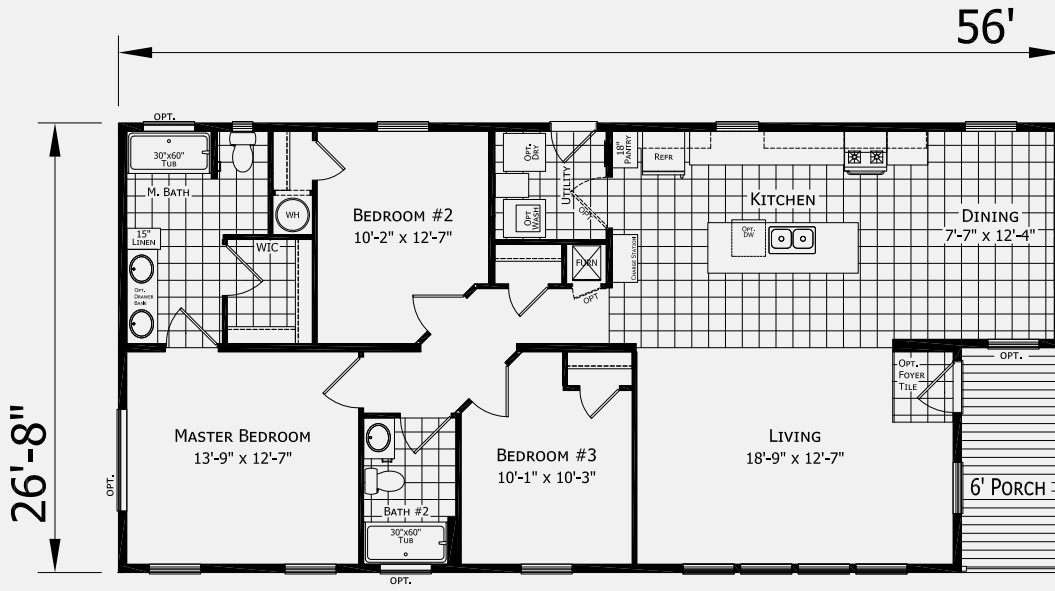
A25606 | 3 Bed-2 Bath
1432 SQ. FT.



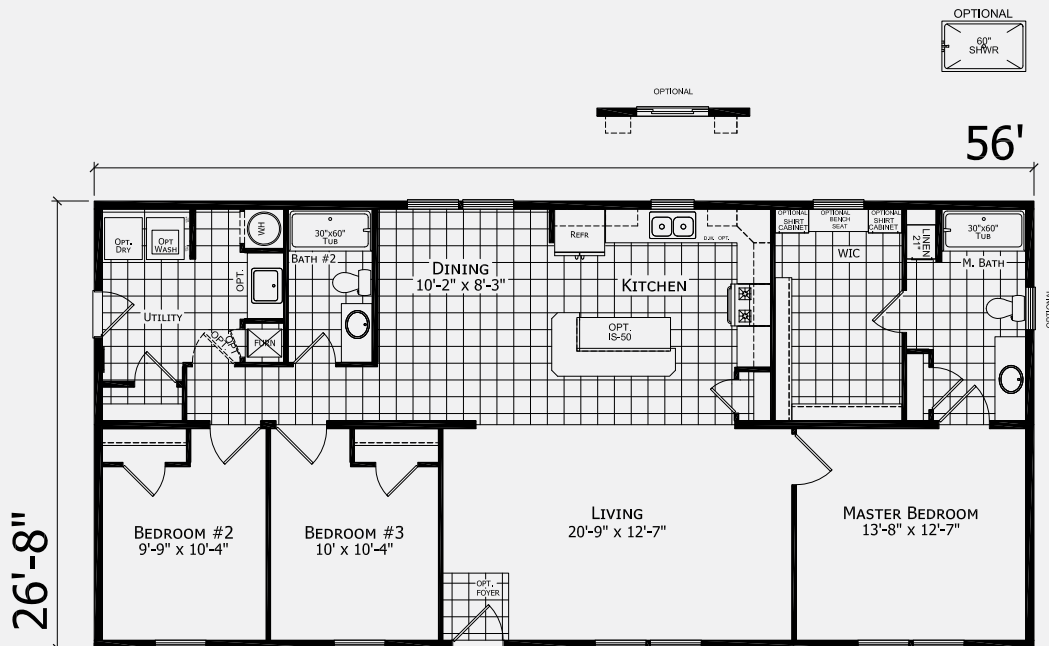
A25607 | 3 Bed-2 Bath
1422 SQ. FT.



3 Bed-2 Bath
1413 SQ. FT.



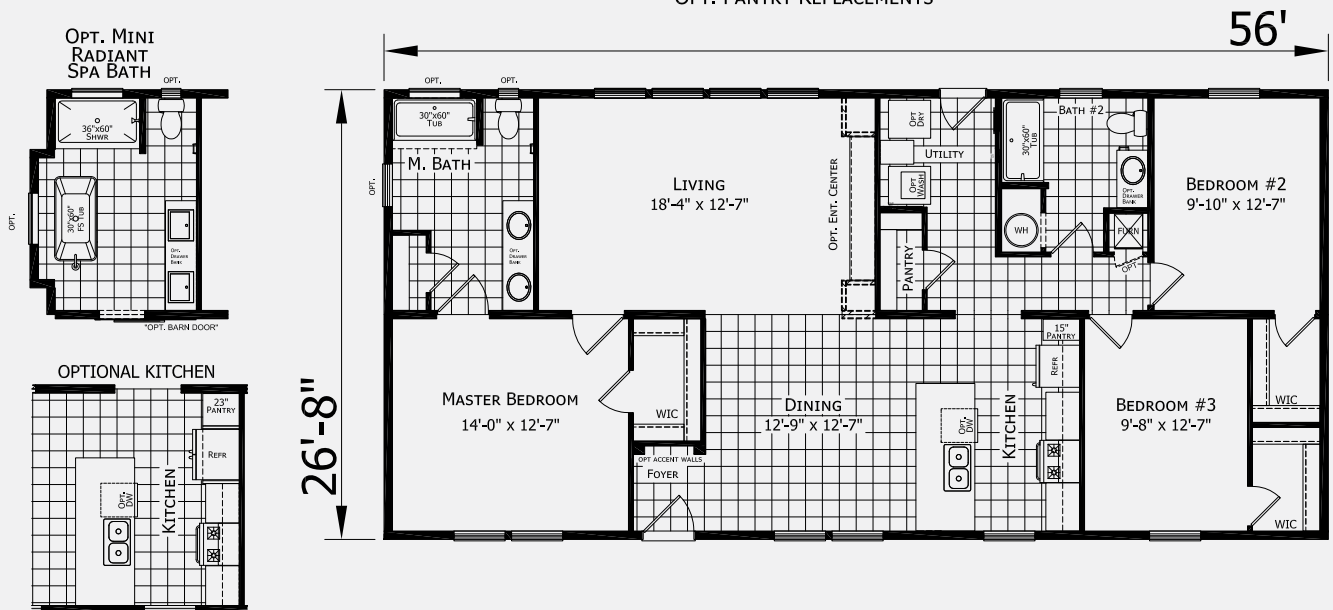
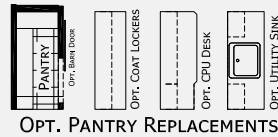
3 Bed-2 Bath
1493 SQ. FT.



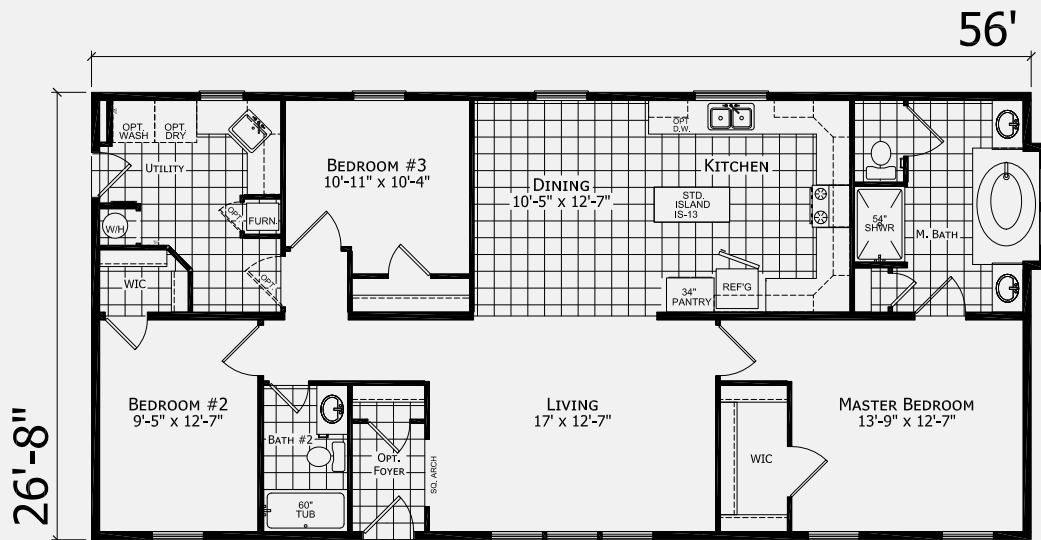
A25613 | 3 Bed-2 Bath
1493 SQ. FT.



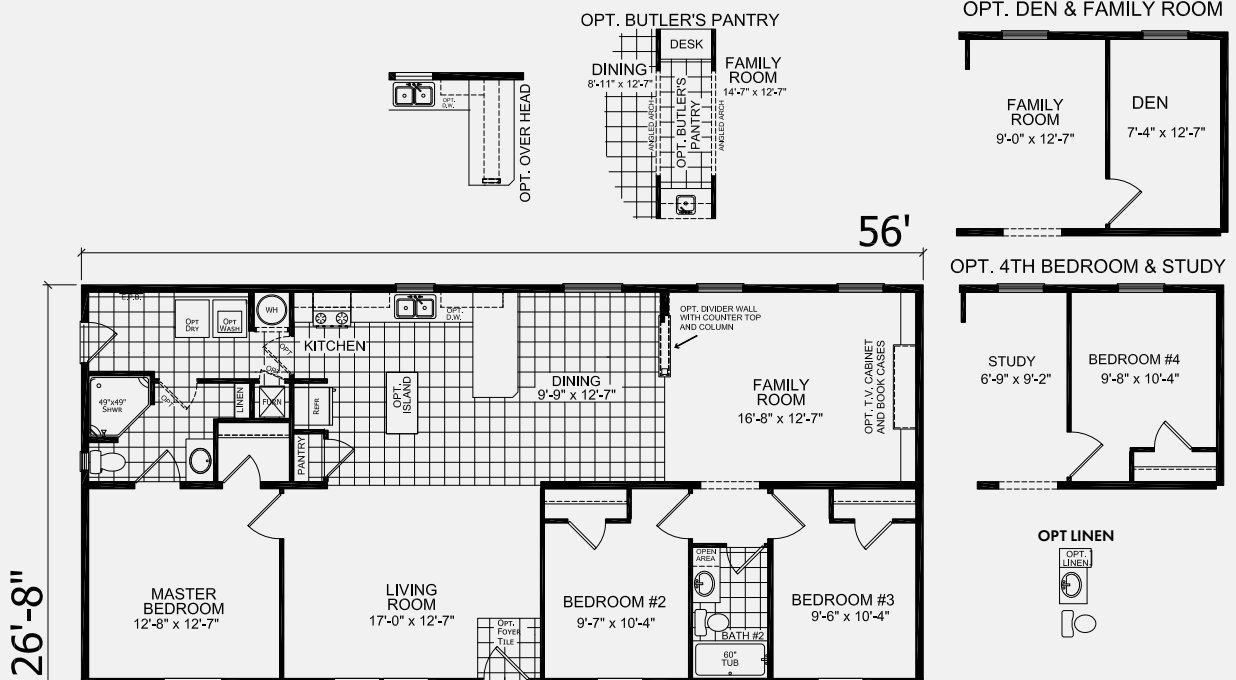
A25616 | 3 Bed-2 Bath
1493 SQ. FT.



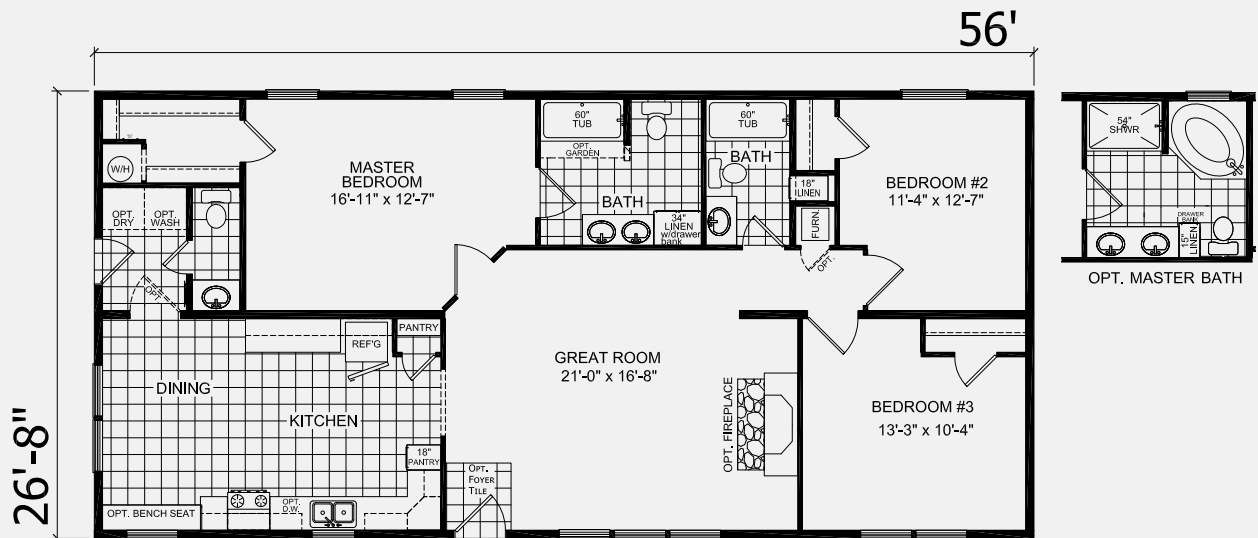
A45632 | 3 Bed-2 Bath
1493 SQ. FT.



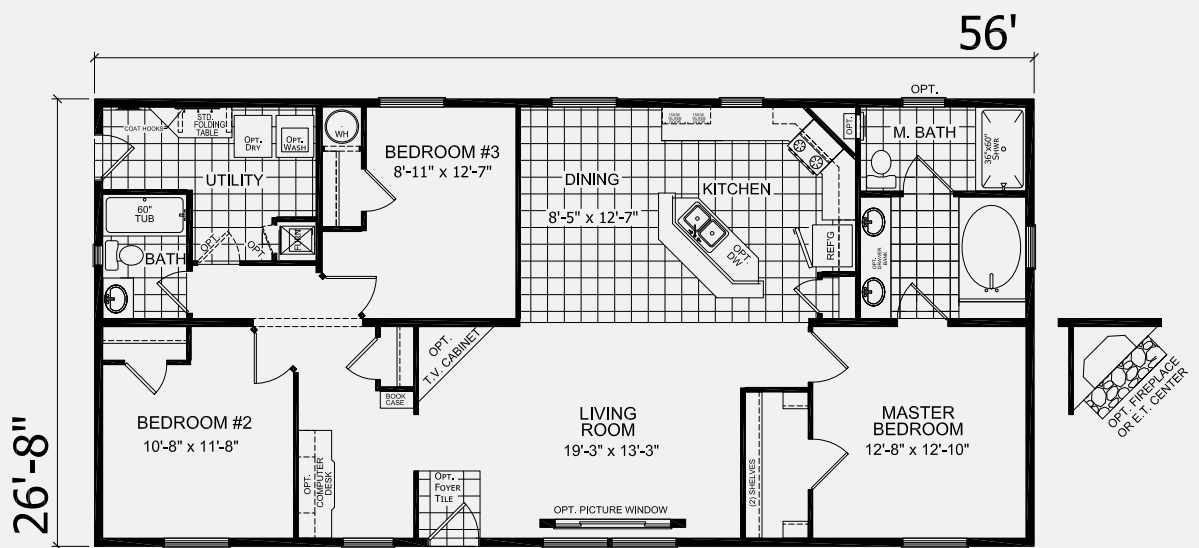
A45633 | 3 Bed-2 Bath
1493 SQ. FT.



A45634 | 3 Bed-2.5 Bath
1493 SQ. FT.



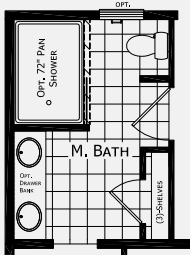
A45656 | 3 Bed-2 Bath
1493 SQ. FT.



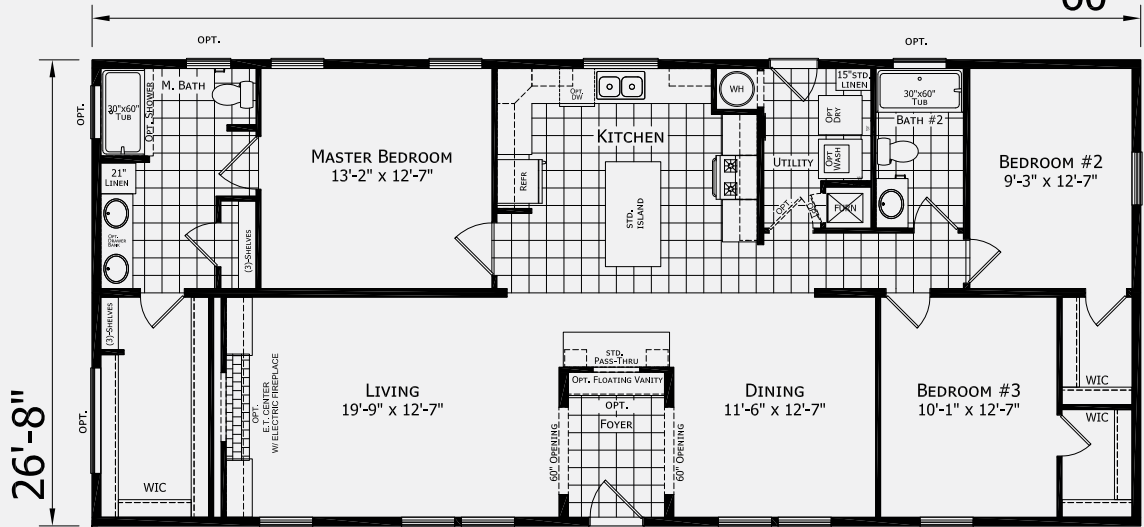
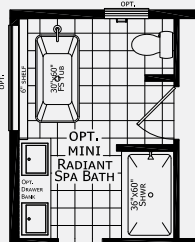
A26009 | 3 Bed-2 Bath 1600 SQ. FT.

60'

OPT. 72" CERAMIC SHOWER



OPT. MINI RADIANT SPA BATH



A46029 | 3 Bed-2 Bath 1600 SQ. FT.

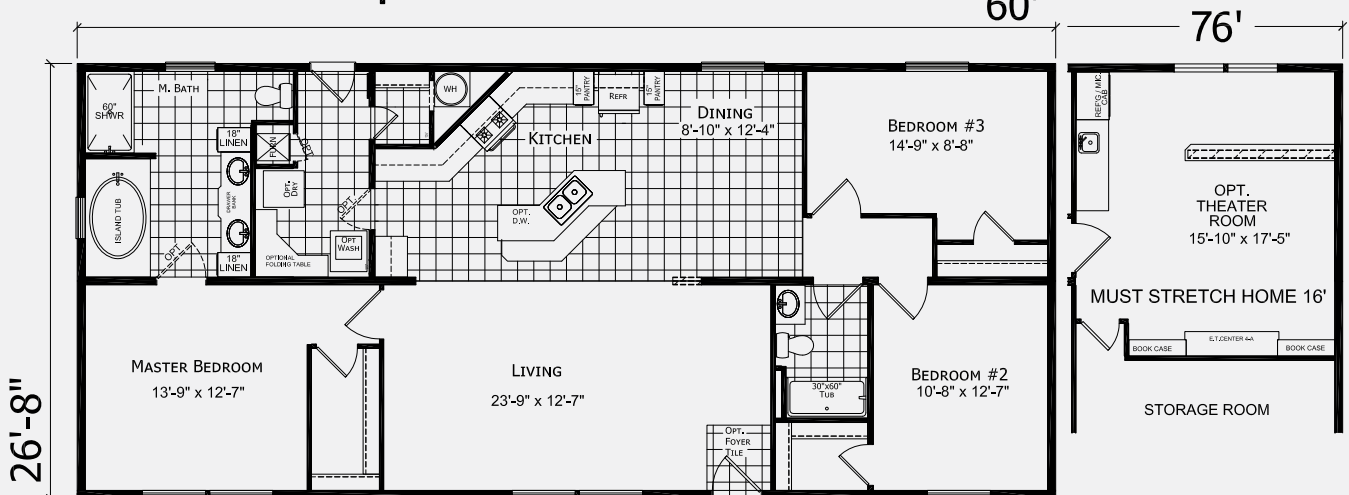
OPTIONAL UTILITY SINK & CABINETS



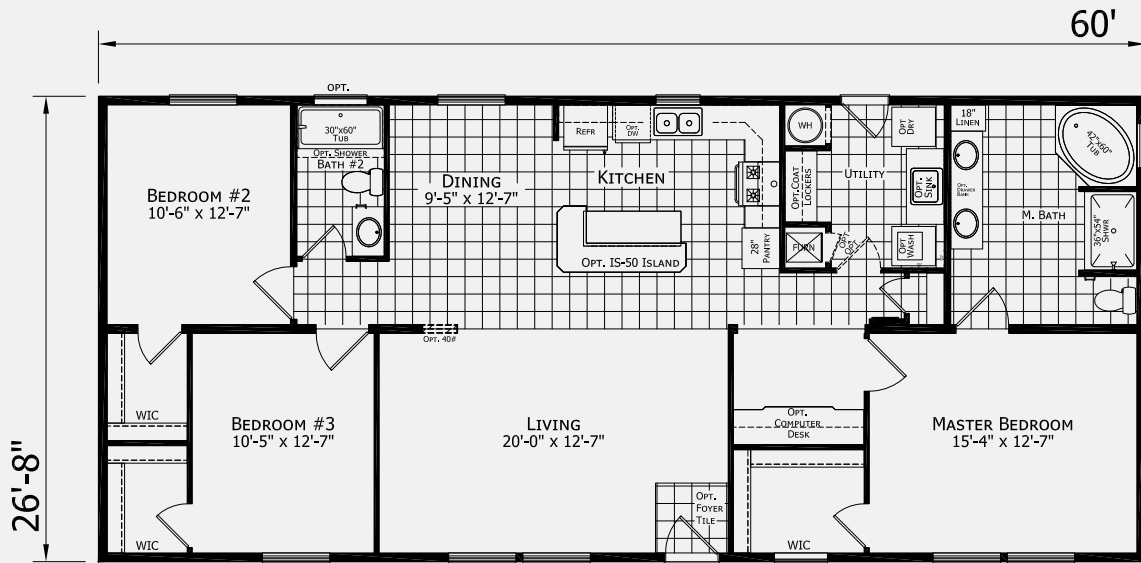
OPT. THEATER ROOM

60'

76'

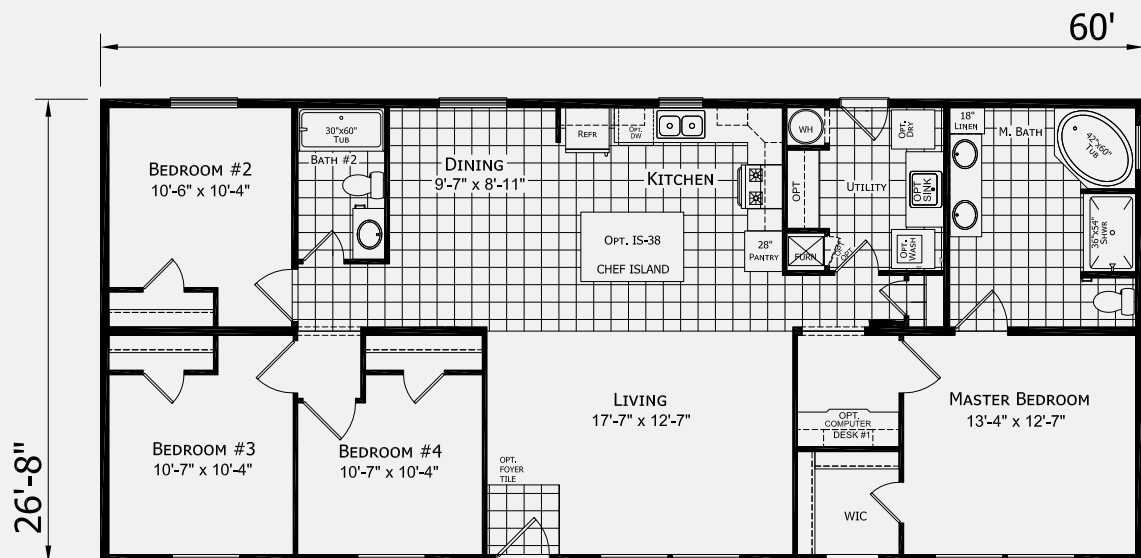


A46026 | 3 Bed-2 Bath
1600 SQ. FT.

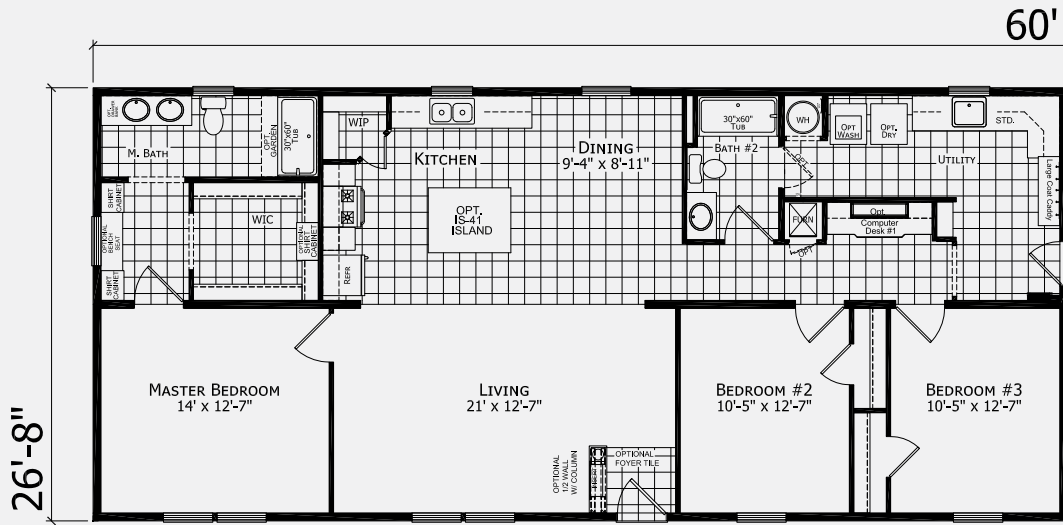


A46026 | 4 Bed-2 Bath
1600 SQ. FT.

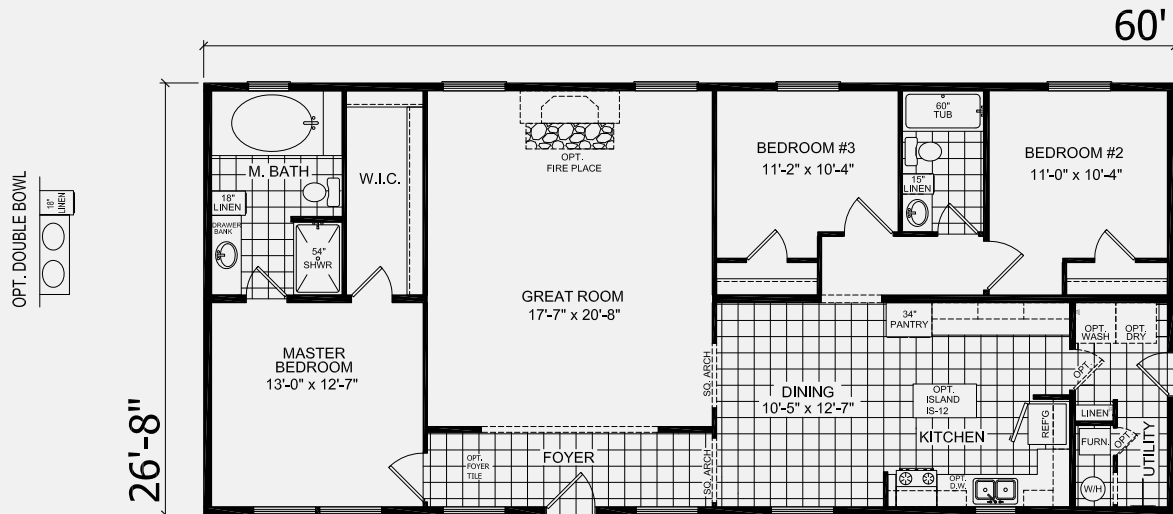
OPT. SLIDING GLASS DOOR



3 Bed-2 Bath
1600 SQ. FT.



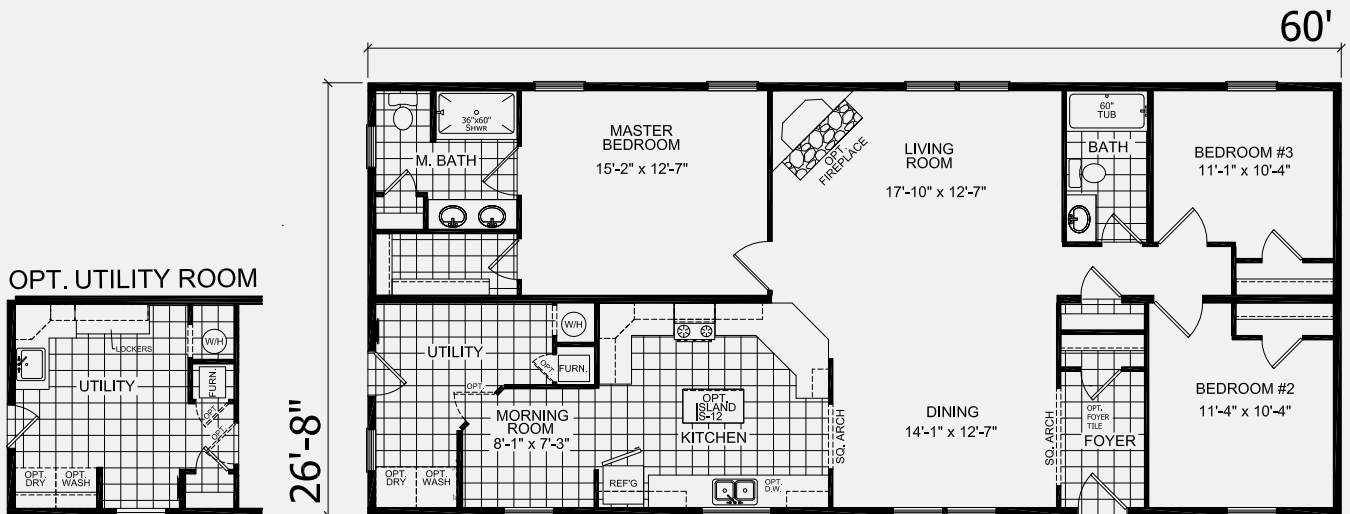
3 Bed-2 Bath
1600 SQ.FT.



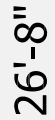
3 Bed-2 Bath
1600 SQ. FT.



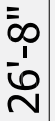
3 Bed-2 Bath
1600 SQ. FT.



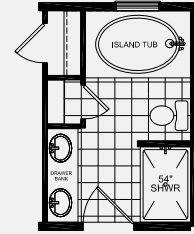
3 Bed-2 Bath
1600 SQ. FT.



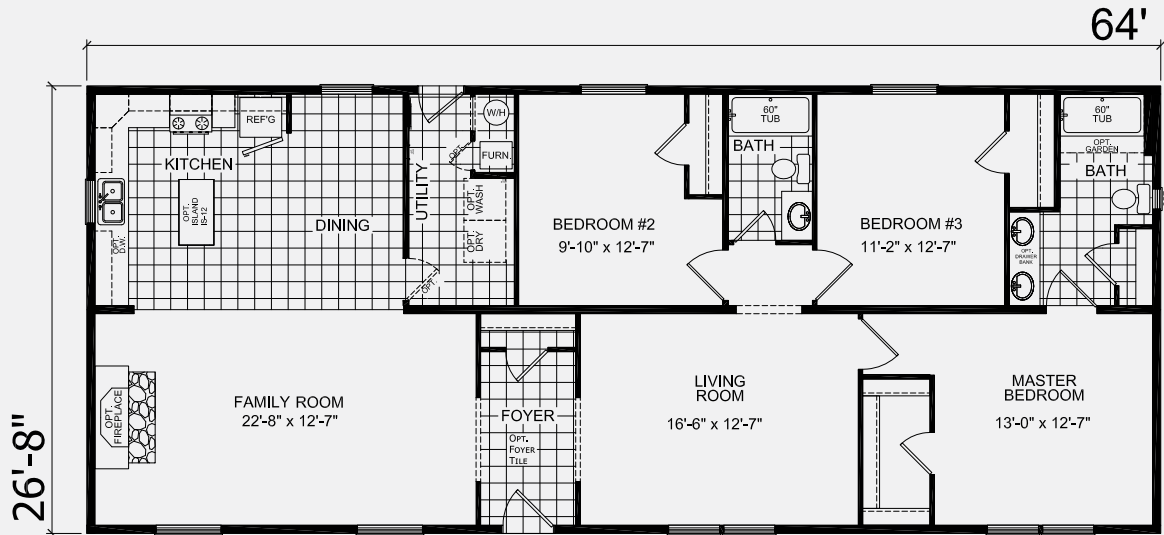
3 Bed-2 Bath
1529 SQ. FT.



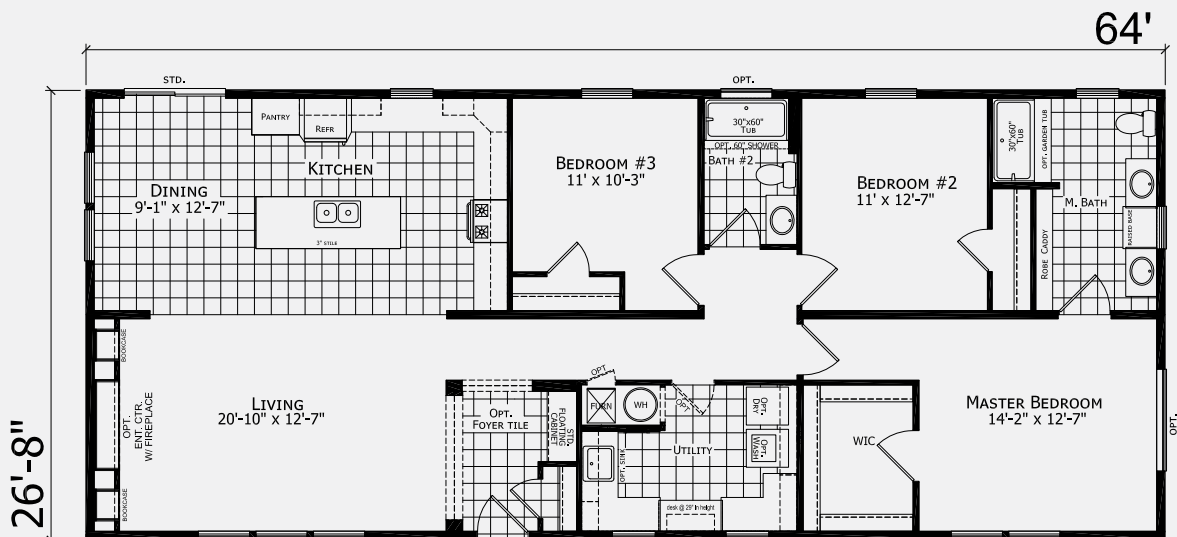
A26401 | 3 Bed-2 Bath
1707 SQ. FT.



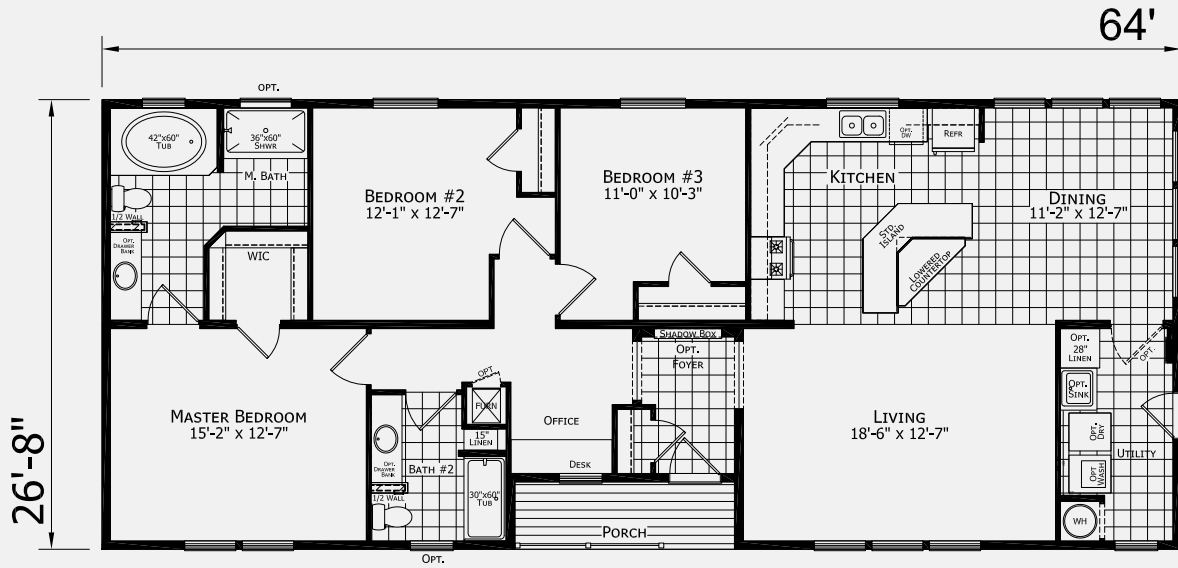
OPTIONAL BATH



A26404 | 3 Bed-2 Bath
1707 SQ. FT.



3 Bed-2 Bath
1655 SQ.FT.



3 Bed-2 Bath
1627 SQ. FT.



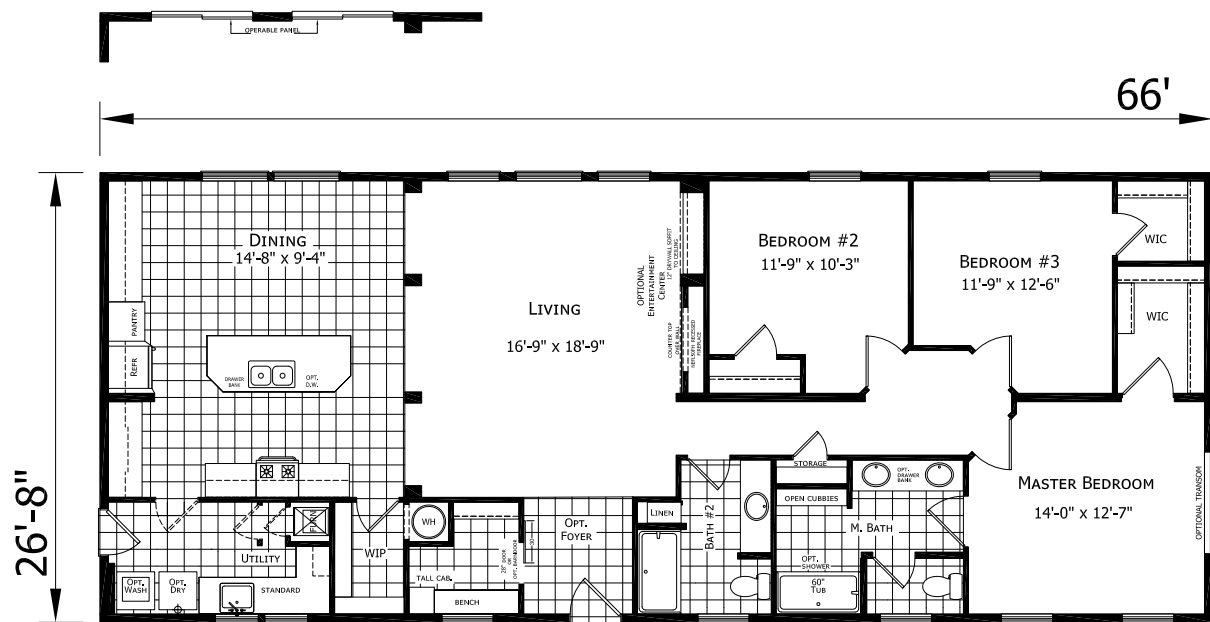
A46653 | 3 Bed-2 Bath
1760 SQ. FT.

A46653 | 3 Bed-2 Bath
1760 SQ. FT.

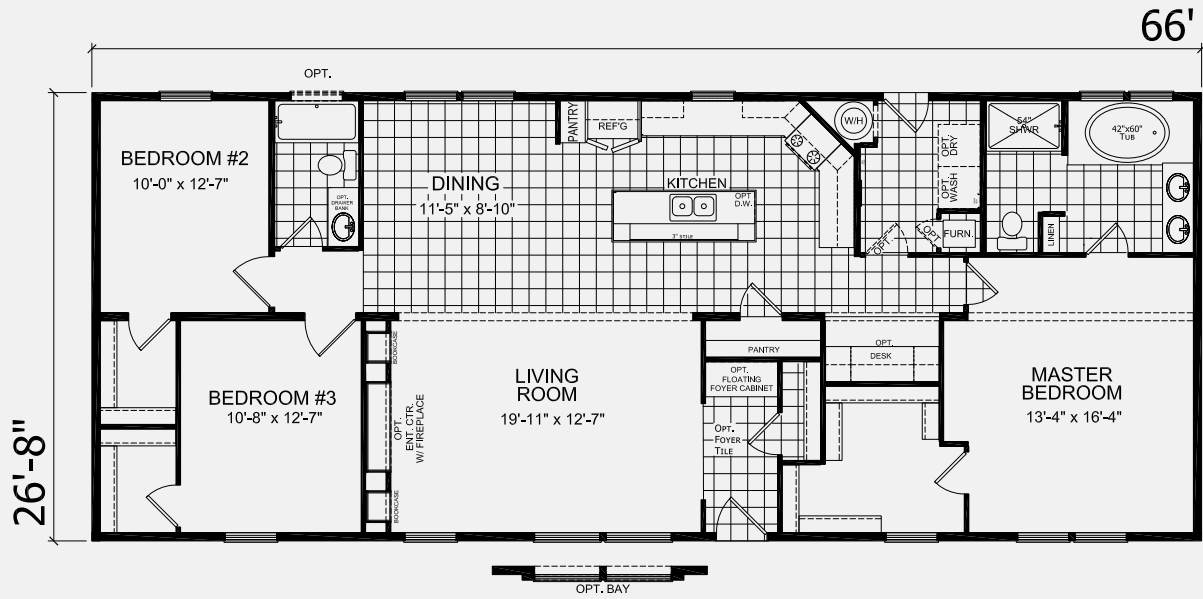


Shown with Optional Exterior

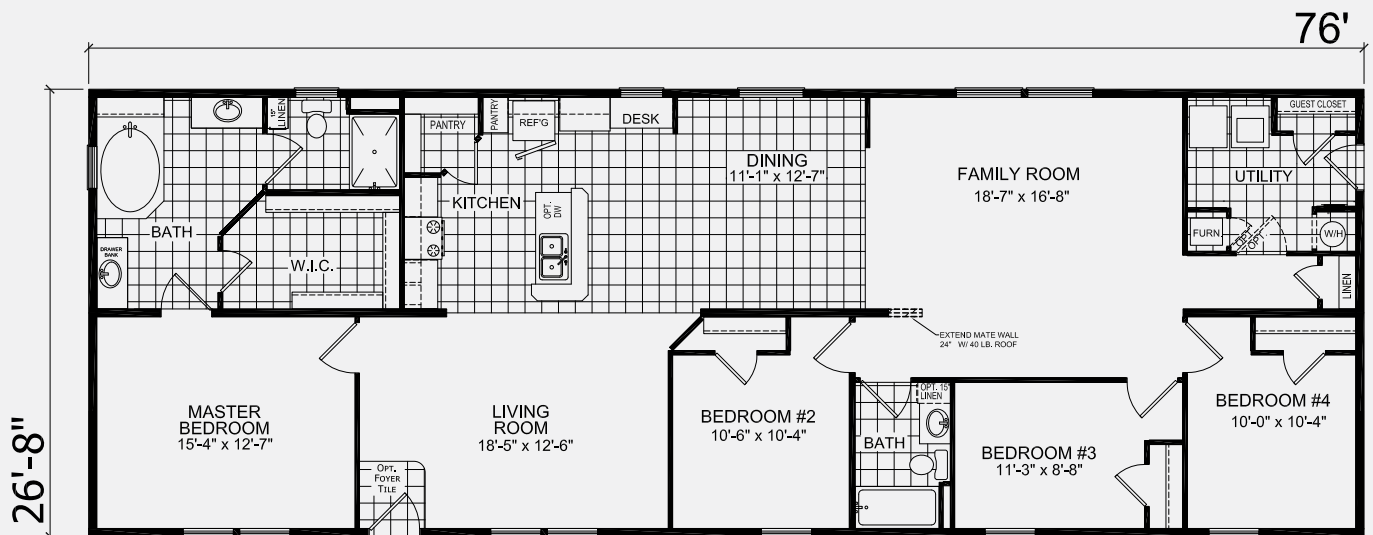
OPTIONAL SLIDING DOORS IN DINING AREA



A76652 | 3 Bed-2 Bath
1760 SQ. FT.



A77650 | 4 Bed-2 Bath
2027 SQ. FT.





ELEVATION OPTIONS



3/12 DORMER



DOUBLE EAVE 3/12 DORMER



DECO DORMER #5



**DOUBLE EAVE 3/12 DORMER
WITH BOX BAY**



ELEVATION "A" WITH LINEALS



FULL PORCH ON GABLE END



**5/12 ROOF WITH SHIP
LOOSE DORMER**



**HALF PORCH WITH EYEBROW
AND EXTENDED EAVE**

NORTHWOOD MULTI-SECTION

STANDARD FEATURES

CONSTRUCTION

- 2x6 Floor Joists – 16" O.C.
- 2X6 Sidewalls – 16" O.C.
- 20 lb. Roof – 24" O.C.
- 8' Sidewalls – Flat Stomped Ceilings
- Vinyl Covered Drywall Throughout
- 3-Tab, 25-Year Shingles with Ridge Vent
- Marriage Line Gasket
- Heat Tape Receptacle
- Nominal 3/12 Roof
- R-11 Floor Insulation
- R-19 Sidewall Insulation
- R-22 Roof Insulation

EXTERIOR

- 38" x 82" Sunburst Fiberglass Front Door (No Storm)
- 9-Lite Rear Door (No Storm)
- Deadbolts on Exterior Doors (Keyed Alike)
- Low-E Gridded Vinyl Windows – Per Plan
- Double Dutch Lap Vinyl Exterior Siding
- Shutters – Front Door Side

INTERIOR

- Fabric Valance Throughout
- Choice of Décor
- National Brand Carpet
- 5 lb. Carpet Pad
- Vinyl in Wet Areas
- White Interior Doors with Knobs
- Vented Shelves in Closets
- Wire Shelf Over Washer/Dryer Area
- Mini Blinds Throughout
- Molding to Match Cabinetry Throughout

PLUMBING & HEATING

- Whole House Interior Water Shut-Off
- Plumb for Washer
- In-Line Heat Ducts
- 056 BTU Gas Furnace with Thermostat
- 30-Gallon Electric Water Heater

ELECTRICAL

- 100 Amp Electric Service
- LED Can Light at Kitchen Sink
- Tulip Light Bars in Bathrooms
- Switched Receptacles in Living Room & Bedrooms
- LED Can Light in Dining Room
- Exterior Jar Lights
- Wire & Vent for Electric Dryer
- Combo Smoke/CO Detectors Per Code

KITCHEN

- 6" Stainless Steel Kitchen Sink
- Dual-Knob Faucet
- 18 Cu. Ft. Refrigerator
- 30" Deluxe Gas Range
- Power Vent Range Hood
- GFI Receptacle
- Laminate Countertop, Edge & Backsplash
- Wood Cabinet Doors – MDF Stiles
- Bank of Drawers
- Fixed Shelf in Overhead Cabinets
- Shelf Over Refrigerator
- Cabinet Cove on Overhead Cabinets

BATHROOM

- GFI Receptacle
- 1-Piece Tub/Shower
- Dual-Knob Faucets
- Towel Bar & Tissue Holders
- 36" Vanity Height – Plastic Sinks
- Mirror at Vanity(s)
- Laminate Countertop, Edge & Backsplash
- Porcelain Toilet
- Curtain Rod at Tub
- Lighted Vent Fan

Due to continuous product development and improvement, prices, specifications, and materials are subject to change without notice or obligation. Square footage and other dimensions are approximate. Exterior images may be artist renderings and are not intended to be an accurate representation of the home. Renderings, photos and floor plans may be shown with optional features or third-party additions.



101 Garden Spot Rd, Ephrata, PA 17522

www.redmanhomesofpa.com