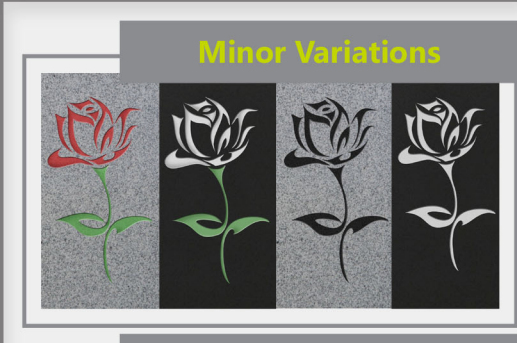
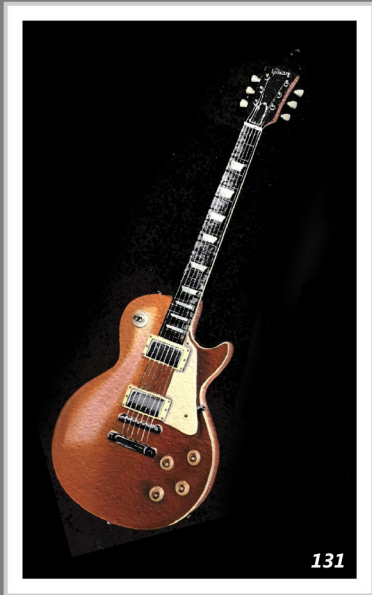


# Memorial Designs



The addition of artwork on a memorial can create a unique and fitting tribute. Our team of skilled artists and masons can combine a number of techniques to produce high quality designs appropriate to the person being remembered. The following examples represent just a small number of the designs available.

Sandblasting and Laser etching remain the most common method of producing an image. These designs can then be highlighted or painted to create something personal and meaningful.



Portraits

Displaying a portrait on a memorial is another way in which to remember your loved one.

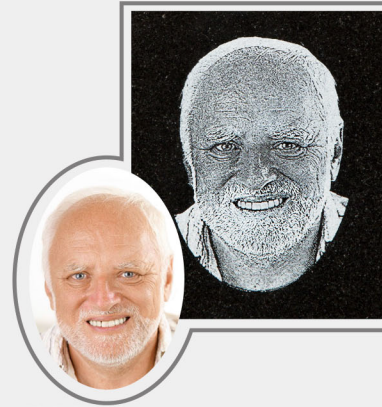
For the best results, a high quality photo is required.

Etched/Shaded/Painted



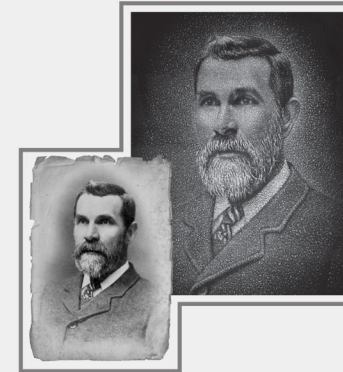
\*monotone

Laser Etched



Original Image

Dot Punched



Original Image



Landscapes

The addition of a landscape or scene allows the memorial to be used as a canvas for our skilled artists to create something truly unique.



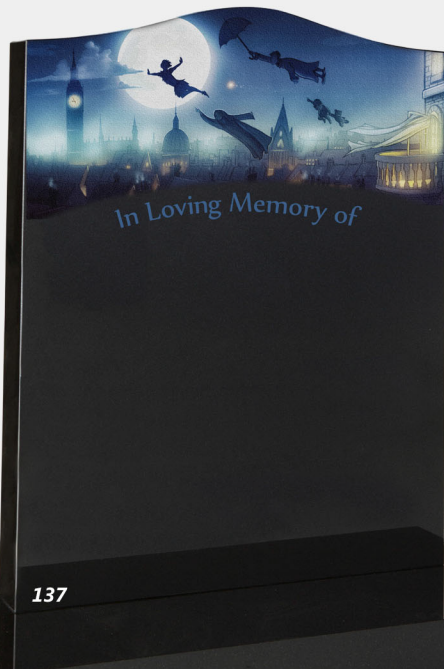
140



138



139



137