

Cemetery Memorials

For all of the memorials in this brochure; materials, designs and ornamentation can be interchangeable.

Memorial Sizes

The memorial sizes shown are
 Headstone:
 27" high x 21" wide x 3" deep
 Base:
 3" high x 24" wide x 12" deep
 (unless otherwise stated)



16001

A traditional Ogee shaped headstone with a sandblast and painted crucifix scene. The night sky is inset with crystals.

Headstone 27"(h)x21"(w)x3"(d)
 Base 3"(h)x24"(w)x12"(d)

Shown in Black Granite



16006

Ogee headstone with a sandblast and painted rural scene in silhouette.

Headstone 27"(h)x21"(w)x3"(d)
 Base 3"(h)x24"(w)x12"(d)



16003

Ogee headstone with a sandblast and painted romantic silhouette scene.

Headstone 27"(h)x21"(w)x3"(d)
 Base 3"(h)x24"(w)x12"(d)



16004

An oval top headstone with a sandblast and painted golf silhouette scene.

Headstone 27"(h)x21"(w)x3"(d)
 Base 3"(h)x24"(w)x12"(d)

Shown in Black Granite

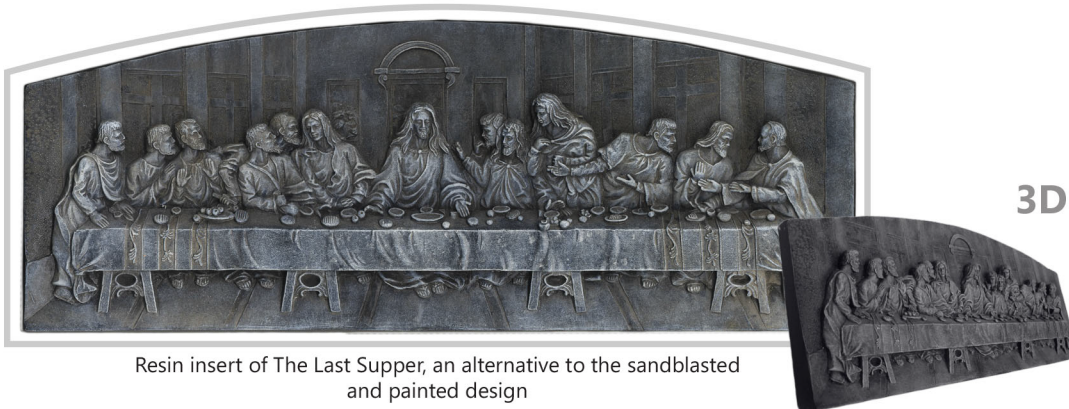


16005

An Oval headstone with a shadow punched and painted depiction of The Last Supper.

Headstone 27"(h)x21"(w)x3"(d)
 Base 3"(h)x24"(w)x12"(d)

Shown in Black Granite



Resin insert of The Last Supper, an alternative to the sandblasted and painted design

NOTE: Decorative colour can fade over time, depending on climatic conditions

Art Work

Our team of highly skilled artists and craftsmen can personalise your memorial with designs and carvings that reflect the person being commemorated. We have a vast library of existing designs or for something unique we can create a bespoke piece of art.



16002

This Peon shaped headstone has a sandblast rose design and a serif cross.

Headstone 27"(h)x21"(w)x3"(d)
Base 3"(h)x24"(w)x12"(d)



16007

An alternate design showing a tapered cross.

Headstone 27"(h)x21"(w)x3"(d)
Base 3"(h)x24"(w)x12"(d)
Shown in Blue Pearl Granite



16077

An Ogee shaped kerb memorial with polished rope effect mouldings around the headstone and kerbs.

Overall 32"(h)x30"(w)x33"(d)
Shown in Black Granite



16010

This headstone offers a new interpretation of the classic sandblast church window design.

Headstone 27"(h)x21"(w)x3"(d)
Base 3"(h)x24"(w)x12"(d)
Shown in Black Granite



16011

This monochrome image of Jesus is one of many designs available.

Headstone 27"(h)x21"(w)x3"(d)
Base 3"(h)x24"(w)x12"(d)
Shown in Abbey Grey Granite



16012

An alternative to traditional sandblast techniques is the use of hand-painted resin.

Headstone 27"(h)x21"(w)x3"(d)
Base 3"(h)x24"(w)x12"(d)
Shown in Black Granite



Hand painted three dimensional resin mould

Headstone Shapes

There are many headstone shapes available. The more traditional ones have names taken from architectural forms such as 'Ogee', 'Half-Ogee' and 'Peon'. Other popular shapes include 'Oval', 'Square', 'Round' and Half-Round' but many more contemporary shapes are also available.



16013

A traditional 'Ogee' top headstone with a sandblasted and painted lily design.

Headstone 27"(h)x21"(w)x3"(d)
Base 3"(h)x24"(w)x12"(d)

Shown in Black Granite



16014

Another example of a sandblasted and painted design.

Headstone 27"(h)x21"(w)x3"(d)
Base 3"(h)x24"(w)x12"(d)

Shown in Dark Grey Granite



16018

A double border frames the polished surface and the sandblasted rose designs add to the classic look of this memorial.

Headstone 27"(h)x21"(w)x3"(d)
Base 3"(h)x24"(w)x12"(d)

Shown in Black Granite



16019

The rose designs on this headstone are inlaid with 23.5 ct gold leaf.

Headstone 27"(h)x21"(w)x3"(d)
Base 3"(h)x24"(w)x12"(d)

Shown in Dark Grey Granite



16020

Reverse sandblasting is another method of ornamentation. The rose design on this memorial is one of many images available.

Headstone 27"(h)x21"(w)x3"(d)
Base 3"(h)x24"(w)x12"(d)

Shown in Twilight Red Granite



16016

This unusual granite colour is an interesting alternative to the traditional headstone colours.

Headstone 27"(h)x21"(w)x3"(d)

Base 3"(h)x24"(w)x12"(d)

Shown in Lavender Rose Granite



16023

A stylised and effective design with painted roses and an integral arch design.

Headstone 27"(h)x21"(w)x3"(d)

Base 3"(h)x24"(w)x12"(d)

Shown in Flint Grey Granite



16021

A blasted scroll design provides a wonderful frame for the inscription.

Headstone 27"(h)x21"(w)x3"(d)

Base 3"(h)x24"(w)x12"(d)

Shown in Black Granite



16022

This sandblasted 'book, cord and tassel' design provides an ideal frame for two inscriptions.

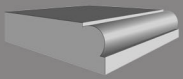
Headstone 27"(h)x21"(w)x3"(d)

Base 3"(h)x24"(w)x12"(d)

Shown in Dark Grey Granite

Headstone Edging

The standard polished headstone edges can be enhanced with chamfers and edge mouldings to provide additional interest, choice and personalisation.

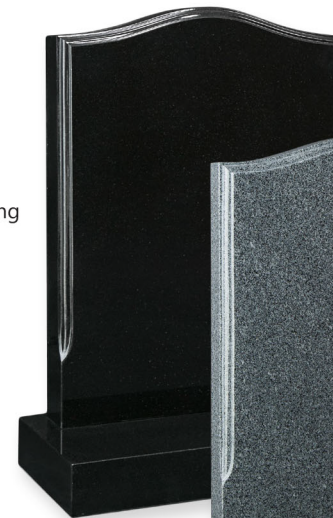


16024

The addition of moulded edges on the headstone and base create a classic looking headstone.

Headstone 27"(h)x21"(w)x3"(d)
Base 3"(h)x24"(w)x12"(d)

Shown in Xiamen Pink Granite



16025

A stop-moulded edge creates a stylish look to the headstone.

Headstone 27"(h)x21"(w)x3"(d)
Base 3"(h)x24"(w)x12"(d)

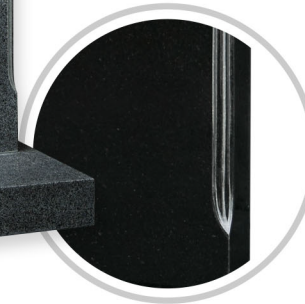
Shown in Black Granite



16026

Headstone 27"(h)x21"(w)x3"(d)
Base 3"(h)x24"(w)x12"(d)

Also shown in Flint Grey Granite



16029

The 'Rose and Cross' design is inlaid with Gold Leaf. The headstone is off-set to the left edge of the base with a 7 inch square vase block completing the design.

Headstone
27"(h)x21"(w)x3"(d)
Base
3"(h)x30"(w)x12"(d)
Vase
7"(h)x7"(w)x7"(d)

Shown in Black Granite

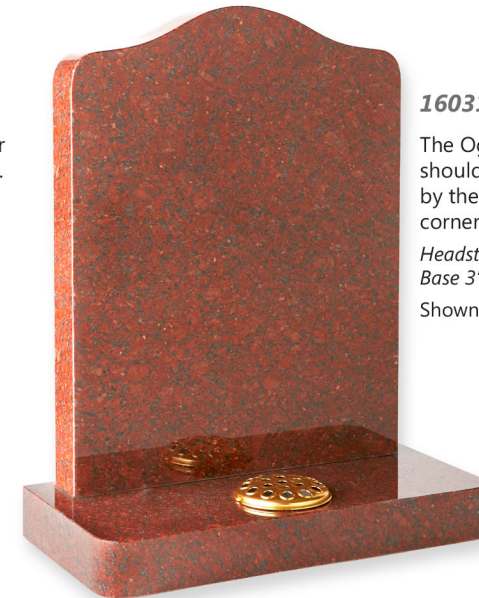


16030

A 'Round' top headstone with a laser etched and highlighted dove design.

Headstone 33"(h)x21"(w)x3"(d)
Base 3"(h)x24"(w)x12"(d)

Shown in Black Granite



16031

The Ogee with rounded shoulders which are echoed by the base's rounded front corners.

Headstone 27"(h)x21"(w)x3"(d)
Base 3"(h)x24"(w)x12"(d)

Shown in Ruby Red Granite

Cemetery Memorials



16033

An Oval Top headstone with a heart shape pin line and blasted poppy design.

Headstone 27"(h)x21"(w)x3"(d)
Base 3"(h)x24"(w)x12"(d)

Shown in Black Granite



16034

A 'Half Ogee' headstone with a CNC carved and painted rose design.

Headstone 27"(h)x21"(w)x3"(d)
Base 3"(h)x24"(w)x12"(d)

Shown in Black Granite



16035

An 'Offset Peon' headstone with a sand blasted monotone rose design.

Headstone 27"(h)x21"(w)x3"(d)
Base 3"(h)x24"(w)x12"(d)



16036

Similar to 16035 with a stop-faded double border and an alternate sand-blasted rose design.

Headstone 27"(h)x21"(w)x3"(d)
Base 3"(h)x24"(w)x12"(d)

Shown in Black Granite



16040

An ornate topped headstone. The pin line accentuates this classic shape and is further enhanced by the bow front base.

Headstone 27"(h)x21"(w)x3"(d)
Base 3"(h)x24"(w)x12"(d)

Shown in Glenaby Grey Granite



16041

The addition of chamfered edges adds another dimension to this headstone. It also features a stylish shadow punched Angel design.

Headstone 30"(h)x24"(w)x4"(d)
Base 4"(h)x30"(w)x12"(d)

Shown in Black Granite



16042

A contemporary headstone featuring a tapered pin line design with a hand painted trio of lilies. The centre splayed base is bored for two vases.

Headstone 30"(h)x26"(w)x4"(d)
Base 4"(h)x30"(w)x12"(d)

Shown in Black Granite



16037
 The scotia corners of this headstone are mirrored in the base to create a simple but effective design.
Headstone 30"(h)x28"(w)x4"(d)
Base 4"(h)x30"(w)x12"(d)
 Shown in Steel Grey Granite



16038
 The rebated sides on this headstone are reminiscent of the Art Deco style. The carved flowers add aesthetic appeal.
Headstone 27"(h)x21"(w)x3"(d)
Base 3"(h)x24"(w)x12"(d)
 Shown in Dark Grey Granite



16039
 The base of this memorial is shaped to match the headstone.
Headstone 27"(h)x21"(w)x3"(d)
Base 3"(h)x24"(w)x12"(d)
 Shown in Black Granite



16043
 The headstone is framed by a gold pin line which makes a feature of the flower vase.
Headstone 30"(h)x24"(w)x4"(d)
Base 4"(h)x30"(w)x12"(d)
 Shown in Coral Green Granite



16044
 One our of many flower designs available is this beautifully hand painted lily.
Headstone 30"(h)x24"(w)x4"(d)
Base 4"(h)x30"(w)x12"(d)
 Shown in Black Granite



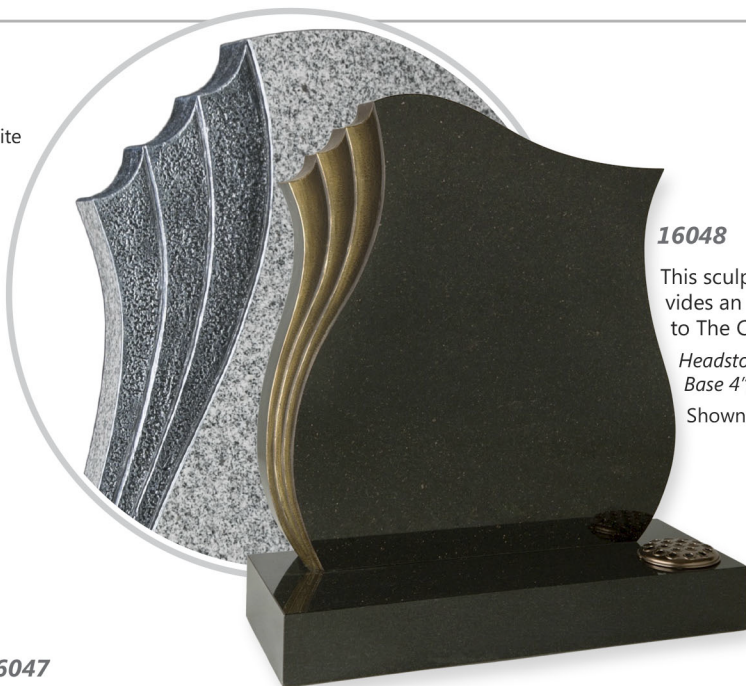
16045
 A matching shape to this Headstone and base.
Headstone 27"(h)x21"(w)x3"(d)
Base 3"(h)x24"(w)x12"(d)
 Shown in Terracotta Red Granite



16046
 Also shown in Jade Green Granite

Cemetery Memorials

Shown in Grey Bird Granite



16048

This sculpted flowing design provides an ultra-modern addition to The Cotswold Collection.

Headstone 30"(h)x28"(w)x4"(d)
Base 4"(h)x30"(w)x12"(d)

Shown in Galaxy Black Granite



16049

The roses flank the central polished heart, an ideal space for adding a personal motif or design.

Headstone 30"(h)x24"(w)x4"(d)

Base 4"(h)x30"(w)x12"(d)

Shown in Black Granite



16047

A contemporary take on the traditional Ogee shape, featuring a hand painted scene (bespoke scenes welcome). With a centre splayed base and two vases.

Headstone 30"(h)x24"(w)x4"(d)
Base 4"(h)x30"(w)x12"(d)

Shown in Black Granite



16052

Painted resin ornamentation adds to the memorial.

Headstone 27"(h)x21"(w)x3"(d)
Base 3"(h)x24"(w)x12"(d)

Shown in Abbey Grey Granite



16053

A bronze ornament to the headstone with a stopped splay base providing additional room for lettering.

Headstone 27"(h)x21"(w)x3"(d)
Base 3"(h)x24"(w)x12"(d)

Shown in Blue Pearl Granite



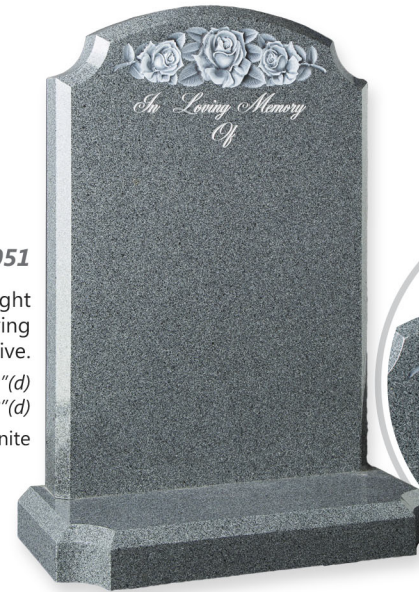
16050

A laser etched rose design is complemented by pitched edges to the headstone & base.

Headstone 30"(h)x24"(w)x3"(d)

Base 3"(h)x30"(w)x12"(d)

Shown in Black Granite



16051

The deep CNC carved rose design is the highlight of this memorial. The inset image shows the carving together with a resin moulded alternative.

Headstone 30"(h)x21"(w)x3"(d)

Base 3"(h)x24"(w)x12"(d)

Shown in Avon Grey Granite



Resin
RSN 043-HLM

CNC carved
CNC 043-HLM



16054

Bronze roses shown on this interesting headstone. The base is shaped to complement the headstone.

Headstone 27"(h)x21"(w)x3"(d)

Base 3"(h)x24"(w)x12"(d)

Shown in Lavender Blue Granite



An alternate design
SBD 047-PTC



16055

A classic design featuring bronze praying hands.

Alternative ornaments are available, some of which are shown to the right of this image.

Headstone 27"(h)x21"(w)x3"(d)

Base 3"(h)x24"(w)x12"(d)

Shown in Black Granite



BRZ 046-PLN

RSN 048-SHD

RSN 048-GLD

Bronze and Resin ornaments can be added to any of the headstones in this brochure.

RSN 044-PLN

RSN 044-HLM

BRZ 049-PLN

16027

An alternative edge is the elegant rope moulding.

Headstone 27"(h)x21"(w)x3"(d)
Base 3"(h)x24"(w)x12"(d)
Shown in Black Granite

16028

Headstone 27"(h)x21"(w)x3"(d)
Base 3"(h)x24"(w)x12"(d)
Also shown in Avon Grey Granite

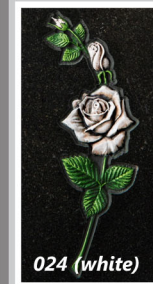
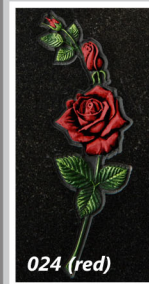


16032

A 'Deep Ogee' headstone with a beautifully carved dove.

Headstone 27"(h)x21"(w)x3"(d)
Base 3"(h)x24"(w)x12"(d)

Shown in Grey Bird Granite



CNC Carving

Traditional masonry skills can now be enhanced by modern technology. Computer aided design and modern machinery produce precision relief carvings at affordable prices. We offer an extensive range of beautiful designs and can also reproduce bespoke works of art to create a memorial as unique as the person you're commemorating. The resulting 3D carvings can be left as natural stone or painted by our team of highly skilled artists.

CNC Lettering

The same modern technology can accurately reproduce 'V-cut' lettering, a deep profile inscription which has significantly more impact than traditional sand-blasted letters.

