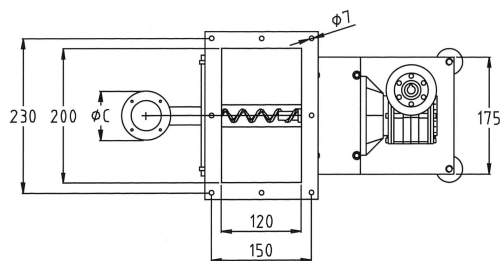
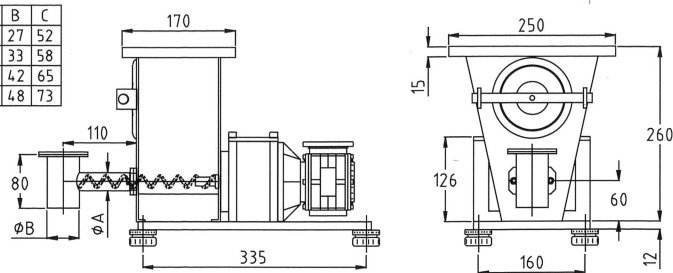




DS 2 SR

Tipo\type	A	B	C
1	14	27	52
2	17	33	58
3	21,5	42	65
4	27	48	73

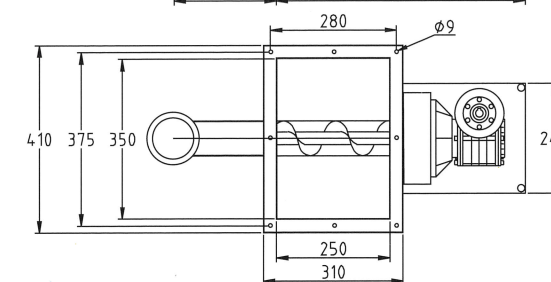
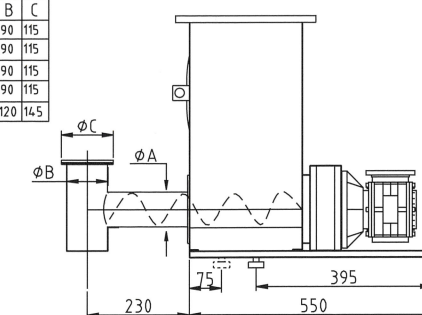


PESO: 11 Kg
WEIGHT: 11 Kilos



DS 11 SR

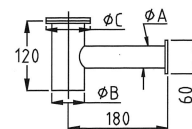
Parte	A	B	C
1	50	90	115
2	60	90	115
3	70	90	115
4	76	90	115
5	89	120	145



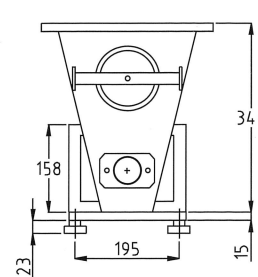
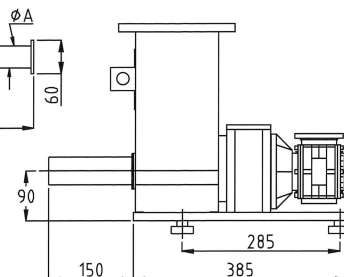
PESO: 35 Kg
WEIGHT: 35 Kilos



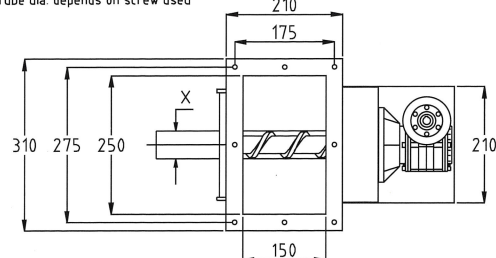
DS 6 SR



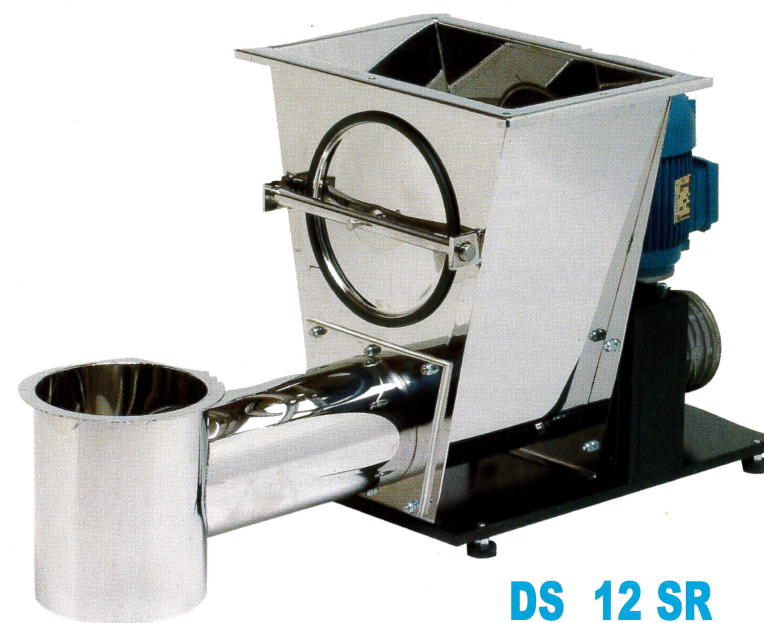
Parte	A	B	C
1	27	60	85
2	33	60	85
3	38	60	85
4	47	60	85
5	50	76	105



X Cannotto in funzione della coclea utilizzata
Tube dia. depends on screw used

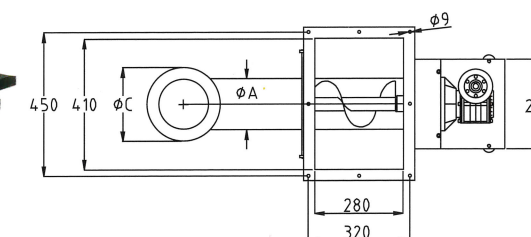
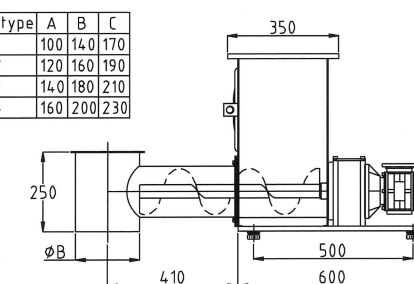


PESO: 20 Kg
WEIGHT: 20 Kilos



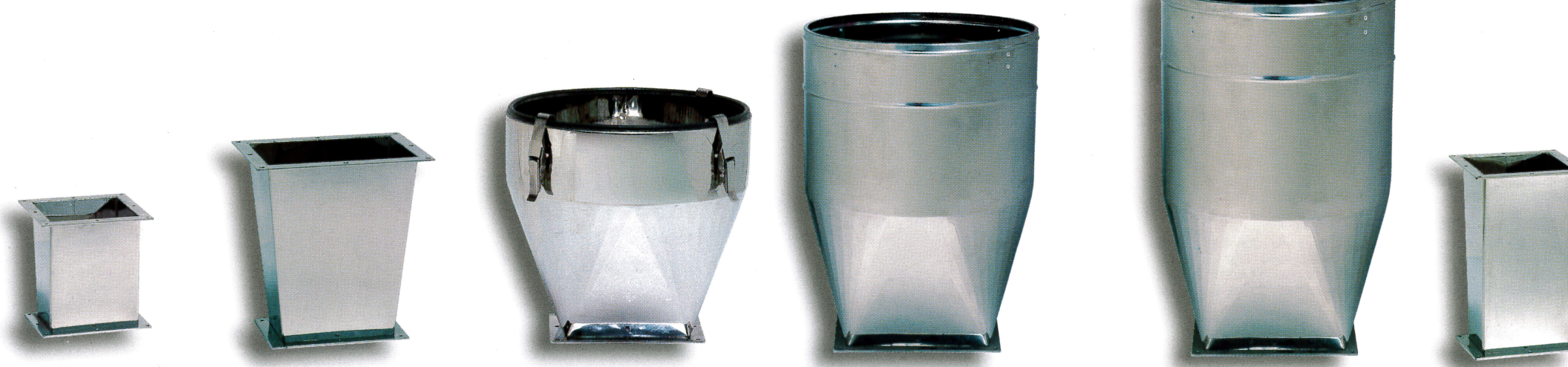
DS 12 SR

Tipo\type	A	B	C
1	100	140	170
2	120	160	190
3	140	180	210
4	160	200	230



PESO: 50 Kg
WEIGHT: 50 Kilos

TRAMOGGE



ASSORTIMENTO VITI

