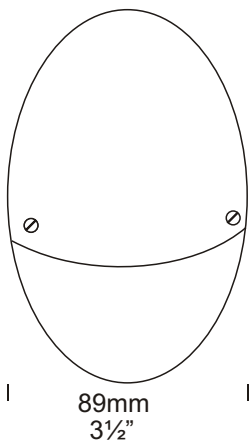
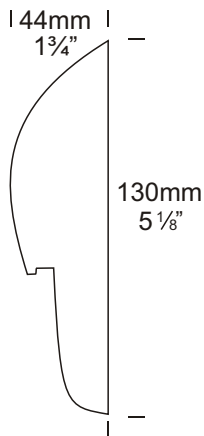


Mouse Lite

Cat. No. MOUSE

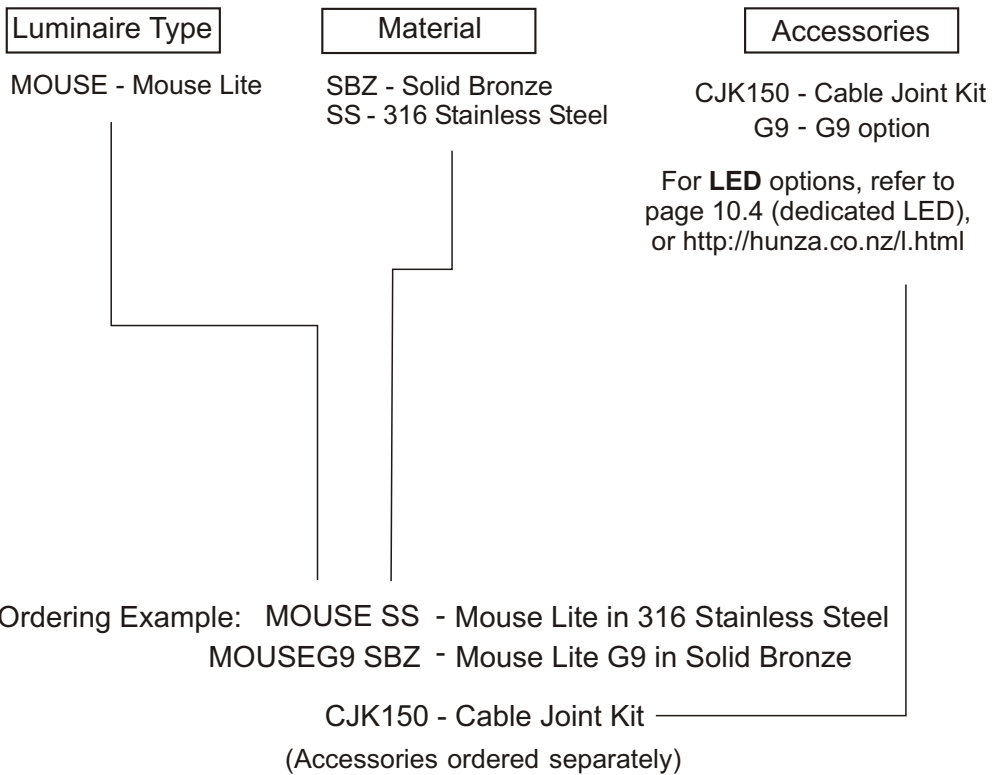
Cat. No. MOUSEG9



The Mouse Lite is a solid bronze or solid 316 stainless steel luminaire designed for vertical surface mounting in gardens and landscapes. The shape is pleasing to the eye and blends unobtrusively into any environment. A space in the wall behind the luminaire is not required for cable connection due to the design which includes a cable junction cavity. There is no light directed upward or forward into the eye.

A G9 version of this luminaire is also available for line voltage lamps.

Ordering Information



HUNZA™ PURE OUTDOOR LIGHTING

HUNZA FACTORY
130 Felton Mathew Ave
Glen Innes
Auckland 1072
New Zealand

Ph: 64-9-528 9471
Fax: 64-9-528 9361
hunza@hunza.co.nz
www.hunza.co.nz

INTERNATIONAL CONTACTS:
www.hunza.co.nz/contacts.php

Specifications may change without notice.
Manufactured in New Zealand.
© 2011 Hunza Holdings Ltd.

Ver 1.4

Luminaire Construction

CNC finished machined from one of the following metals:

Investment cast in bronze with forged brass mounting plate.

Investment cast in 316 stainless steel with investment cast 316 stainless steel mounting plate.

Mounting

Mount using a mounting plate fixed to the wall, etc. with 316 stainless screws. The luminaire is then fitted to the back plate using two pan head screws.

Features

Lens:

2mm (3/32") frosted tempered shatter resistant glass.

Lifetime Warranty.

Gasket:

Nytrol 150°C (302°F).

Lamp Holder:

G4 - 350°C (662°F) ceramic multi contact lamp holder with 180°C (356°F) silicone cables.

G9 - 280°C (536°F) ceramic lamp holder with 250°C (480°F) teflon cables.

Accessories:

Cable Joint Kit (Cat. CJK150).

Not approved for USA/Canada.

Retro™ transformer 110/240-12 volt (Cat. /R).

G9 Option (Cat. G9).

Standards

IP66  UL1838

Luminaire Weight

BZ .820kg (1lb 12oz)

SS .750kg (1lb 10oz)

Power Supply

HUNZA™ Inground or Wall Mount Transformer: not included.

USA and Canada:

HUNZA™ Wall Mount Transformer: not included.

Luminaire: supplied with

G4 5, 10, 20 watt lamp max

G9 - 25 watt lamp max.

LED - Refer sheet no. 10.4

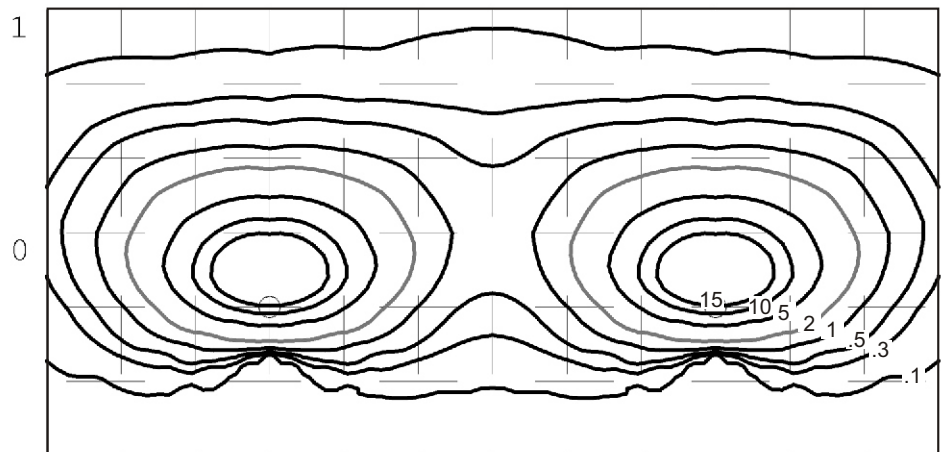
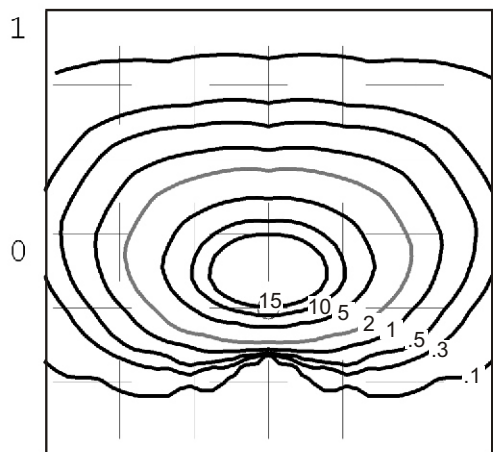
USA and Canada:

G4 5, 10 watt lamp max.

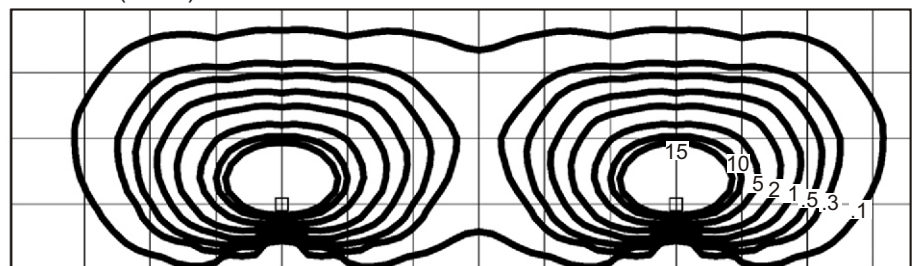
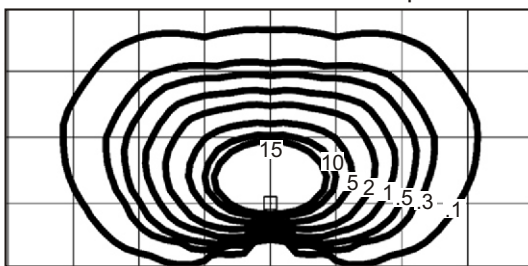
G9 - 25 watt lamp max.

LED - Refer sheet no. 10.4

Mouse Lite 10 watt G4 Bi-Pin lamp - Lens height 400mm (15¾")



Mouse Lite 20 watt G4 Bi-Pin lamp - Lens height 400mm (15¾")



Isolux Lumens Plot - Footcandles = Isolux figures divided by 10.76

HUNZA™ PURE
OUTDOOR
LIGHTING

HUNZA FACTORY
130 Felton Mathew Ave
Glen Innes
Auckland 1072
New Zealand

Ph: 64-9-528 9471
Fax: 64-9-528 9361
hunza@hunza.co.nz
www.hunza.co.nz

INTERNATIONAL CONTACTS:
www.hunza.co.nz/contacts.php

Specifications may change without notice.
Manufactured in New Zealand.
© 2011 Hunza Holdings Ltd.

Ver 1.4