

# INFORMATION BOOKLET



# PINNACLE COLLEGE WATERFALL





## CONTACT INFORMATION

**Address:  
11 Candican Rd.  
Barbeque Downs  
Midrand**



**Contact number  
087 352 1975**

**Website  
[www.pinnaclecolleges.co.za/waterfall](http://www.pinnaclecolleges.co.za/waterfall)**

**For enquiries  
[waterfallenrolments@pinnaclecolleges.co.za](mailto:waterfallenrolments@pinnaclecolleges.co.za)**

[Click here for  
our virtual  
school tour](#)



**PINNACLE COLLEGE  
WATERFALL**

# ABOUT PINNACLE WATERFALL



## OUR VISION

A School with your child at its core.



## OUR VALUES

Respect for oneself, others, your property and the environment.

• Honesty • Empathy • Kindness • Respect • Integrity

## The Pinnacle Colleges M&C COMMITMENT

We measure our success via student input/assessment—  
a slick, non time consuming system.

We use the measured data to communicate the “student climate” via regular student and parent surveys.



PINNACLE  
COLLEGES

# PINNACLE COLLEGES

## 4 PROMISES



### STUDENT EXPERIENCE

A day to day student experience where you will grow socially and academically in a non-judgemental and respectful space.

### OUR CAMPUS

A campus experience that will make you proud to call it your school.

### EXTRACURRICULAR

An extra-mural experience of high quality – allowing you to enjoy and develop your talents.

### COMMUNICATION

Open communication channels between all the role players involved in your education. The triangle including the student—school—parent is vital in this promise.



# GRADE 000 - 0

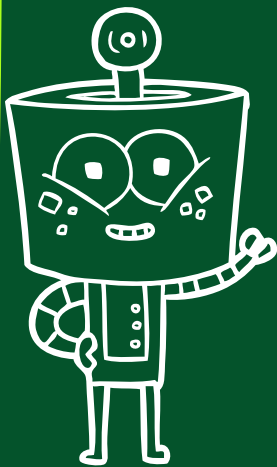
**Our Pre-Primary caters for children from Grade 000 (3 to 4 years) to Grade 0 (5 to 6 years).**

Through interactive play, the formative years of schooling are enhanced in an atmosphere of explorative fun in our fully equipped Pre-Primary “campus” housed within our greater Pinnacle Waterfall Campus.

Our inspirational staff create a safe and stimulating environment for the children, and make sure every one of them feels loved. The atmosphere in our classrooms provides a happy ,secure environment for the transition from nursery school into the formal disciplines of learning to read and write in Grade 1.

Our Pre-Primary programme also includes:

- Learn-to-swim
- Buzzi-Bodies Physical Education Programme
- Junior Jive Music Appreciation Programme



Aftercare is available .

Pre-primary classes include a teacher and a teacher assistant. Students are less than 20 per class.



**Grade 000 - 0** | 2021 Fee : R 5 980 - R 6 830 pm\* 10 months



# GRADE 4 - 7

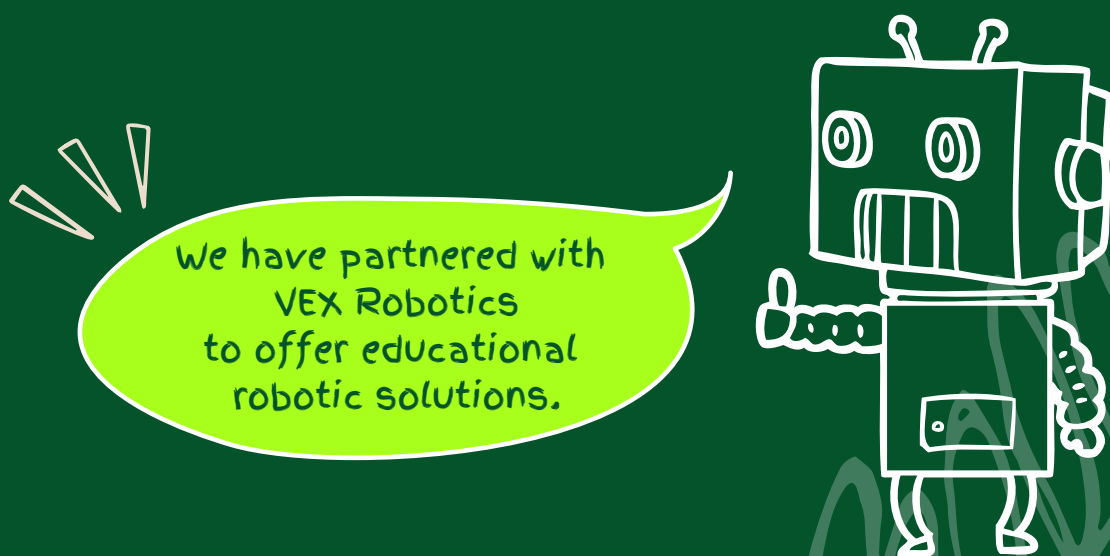
We follow the CAPS Curriculum (Curriculum and Assessment Policy) of the Department of Basic Education which will culminate in an IEB written exam for matric. We follow an inquiry based learning model.

The following subjects are covered:

- English (HL)
- Afrikaans or iSiZulu (FAL)
- Mathematics
- Natural Science
- Life Skills
- Robotics & Digital Literacy
- Economic Management Sciences (Grade 7)
- Technology (Grade 7)
- Social Sciences

We strive to achieve academic excellence, and promote independent thinking and problem-solving strategies as we prepare our pupils for the IEB exam and for lifelong learning by getting them accustomed to answering application style questions.

The personal development of every pupil is important as we nurture their emotional intelligence in a safe environment. Our dedicated teachers are committed to educational excellence and attend regular in-service training. Our maximum class size is 26 pupils per class.





# GRADE 8 - 9\*

We follow the CAPS Curriculum (Curriculum and Assessment Policy) of the Department of Basic Education which will culminate in an IEB written exam for matric. We follow an inquiry based learning model.

**The following subjects are covered :**

- English (HL)
- Afrikaans or iSiZulu (FAL)
- Mathematics
- Natural Science
- Social Sciences
- Life Orientation
- Robotics & Digital Literacy
- Art and music Appreciation is included in our curriculum
- Technology

We strive to achieve academic excellence, and promote independent thinking and problem solving strategies as we prepare our pupils for the IEB exam and for lifelong learning by getting them accustomed to answering application style questions. The personal development of every pupil is important as we nurture their emotional intelligence in a safe environment. Our dedicated teachers are committed to educational excellence and attend regular in-service training.

Our maximum class size is 26 pupils per class.

\*Grade 9 will be available in 2021.

Gr 8 & 9  
Academic bursaries  
available!

**Grade 8 - 9** | 2021 Fee R8 970 per month \* 10 months



# EXTRA-CURRICULAR

All our students are encouraged to participate in at least one activity per term:

## **Sport:**

Athletics (track only)  
Basketball (Boys & Girls)  
Cross Country  
Swimming  
7's Rugby  
Soccer  
Netball  
Tennis

## **Culture:**

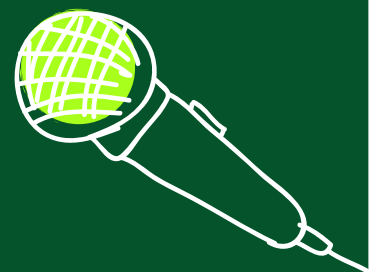
Choir  
Art Club  
Chess  
Debating  
Public Speaking  
Revue

## **Social Programmes:**

Anti bullying programmes  
Inclusiveness  
Leadership development

## **Student support:**

Emotional / Academic





# COVID-19 COMPLIANCE

**We are proud to say we have lost ZERO school days.**

**Via the platform, MS Teams, we were able to move all our lessons over to a blended learning model for all our grades.**

**Parents and students have the option to attend physical classes, or to join our interactive lessons online.**

**Our school adheres to strict Covid-19 safety protocols and we ensure all procedures are followed closely. Our students and staff receive training on an ongoing basis.**

**The safety of our family is our number one priority.**



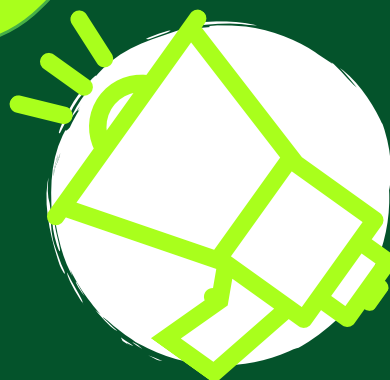
# FEEDBACK FROM OUR FAMILIES

I want to take this opportunity to compliment you on this approach of teaching and for your forward thinking, out of the box Ideas!!!

Continue the good work that you are doing. Stay as committed and passionate as you are. We really appreciate all that you do.

This is the coolest school I have ever seen!!  
- Student

Beautiful location, happy learners... Very satisfied with Pinnacle Waterfall!





LEARN TODAY.  
LEAD TOMORROW.

