



CORNELL PUMP COMPANY

Q-MAX

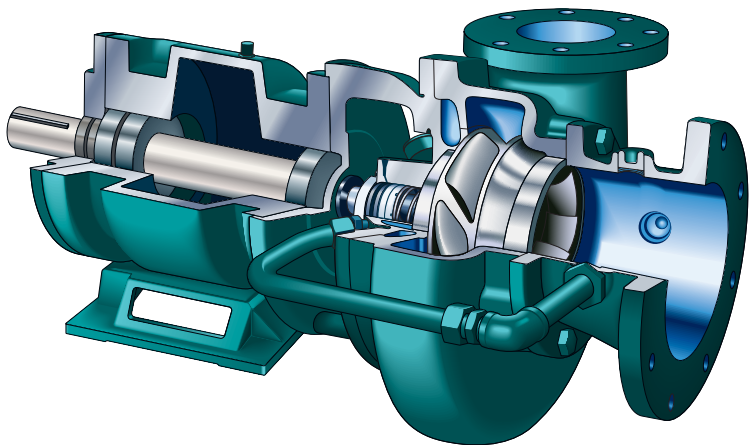
HIGH FLOW, LOW HEAD PUMPS



EFFICIENT BY DESIGN



Q-MAX PUMPS



- HIGH FLOW
- LOW HEAD
- RELIABLE ENGINEERING
- NEW DESIGN
- HIGH EFFICIENCY

FEATURES AND BENEFITS

The Q-Max line of pumps is designed with Cornell's renowned quality and durability.

- ✓ Competitive Pricing
- ✓ Available in all mounting configurations (CC, Frame and SAE)
- ✓ Packing or Cycloseal® mechanical seal
- ✓ Back pullout construction
- ✓ Cast iron construction with bronze wear rings
- ✓ 2 year warranty
- ✓ 20,000 hour minimum B-10 bearing life

HEAVY-DUTY CENTRIFUGAL PUMPS

Available in horizontal or vertical close-coupled and frame or engine mount configurations. Engineered for high flow/low-head applications, with renowned Cornell quality and durability.

Cornell redesigned some of our most popular clear liquids pumps, engineering them with single volutes. This makes the pumps lighter, and less expensive to produce while maintaining excellent hydraulic efficiencies and performance.

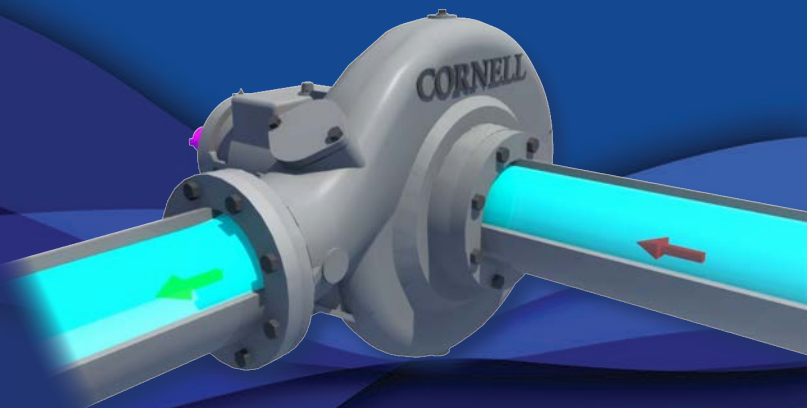
ALL Q-MAX PUMPS INCLUDE:

- ✓ Standard iron construction w/ bronze shaft sleeve
- ✓ Cast iron impeller
- ✓ External Hydraulic Balance Line
- ✓ Replaceable wear rings and shaft sleeve
- ✓ High efficiency hydraulics

CYCLOSEAL® SYSTEM FOR GRIT REMOVAL

CYCLOSEAL is a self-contained single mechanical seal with a dished backplate. **This configuration requires no external flushing and eliminates the need for a water flush line.** The Cycloseal uses stationary deflector vanes cast into the dished pump backplate in conjunction with contoured impeller back vanes to create pressure gradients that moves solids and entrained vapor away from the seal faces. The Cycloseal system is only available on Cornell pump models.

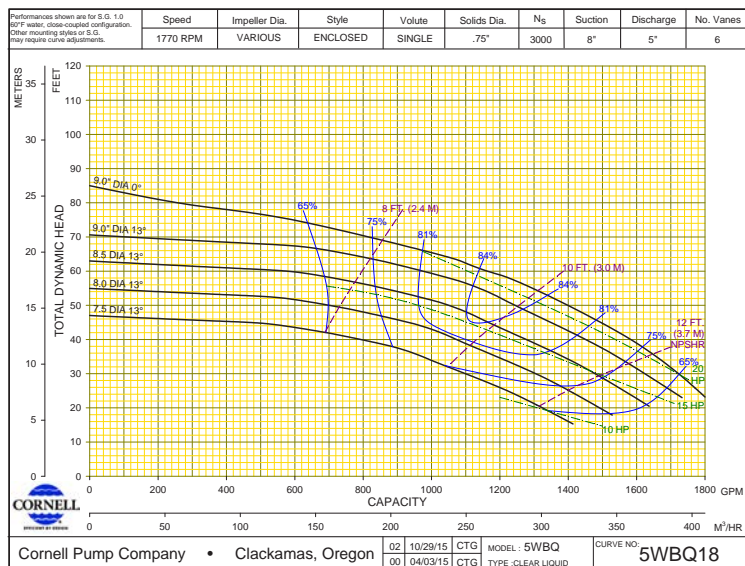
- No flush water required
- Removes grit from pump seal compartment
- Extends pump seal life three times standard mechanical
- No drips/mess at application site
- Reduced maintenance costs
- Increased uptime and reliability



Q-MAX PUMPS

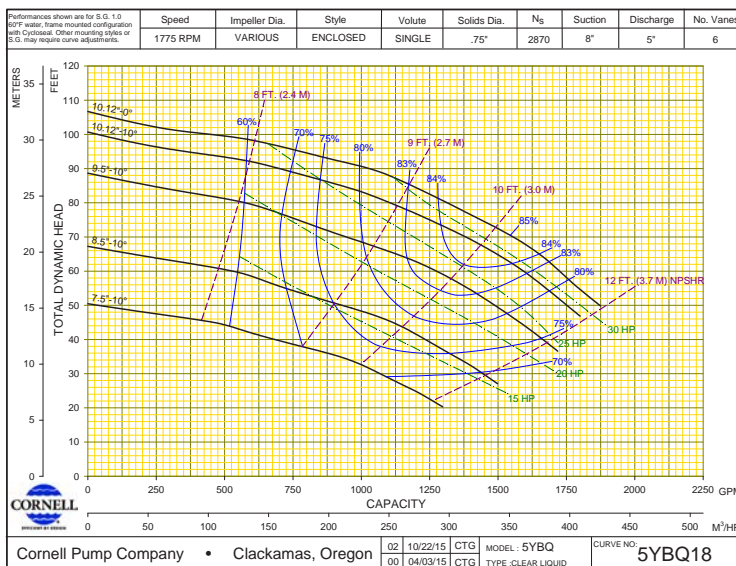
5WBQ

- Flow rates from 540 to 1,800 GPM
- Pressure from 11.5' to 85' (5 to 37 PSI)
- 84% efficient at Best Efficiency Point
- Dimensions are same as existing 5WBH pump



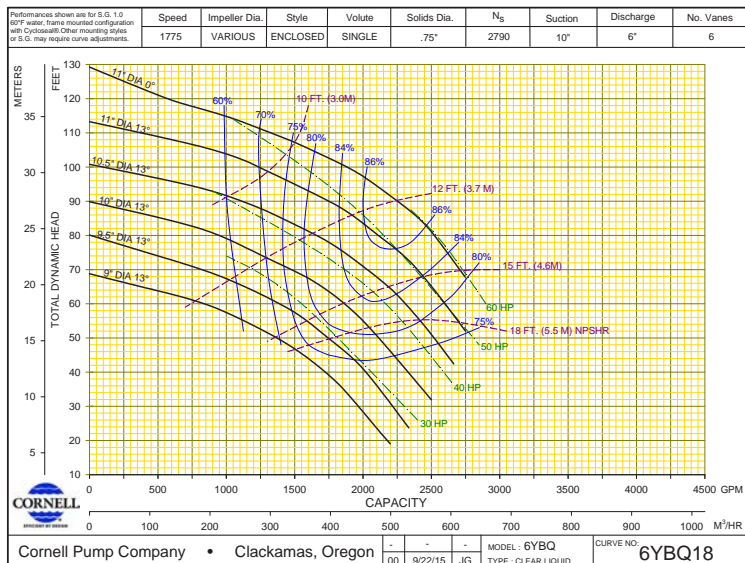
5YBQ

- Flow rates from 520 to 1,850 GPM
- Pressure from 21' to 106' (9 to 46 PSI)
- 85% efficient at Best Efficiency Point
- Dimensions are same as existing 5YBH pump



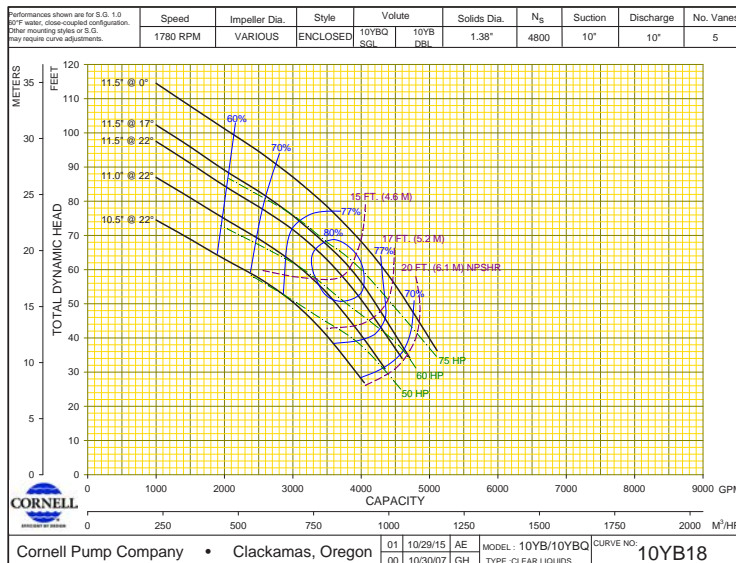
6YBQ

- Flow rates from 1,000 to 2,750 GPM
- Pressure from 21' to 129' (9 to 56 PSI)
- 86% efficient at Best Efficiency Point
- Dimensions are same as existing 6YB pump



10YBQ

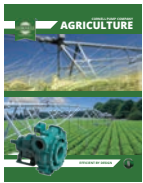
- Flow rates from 1,900 to 5,100 GPM
- Pressure from 28' to 115' (12 to 50 PSI)
- 80% efficient at Best Efficiency Point
- Dimensions are same as existing 10YB pump



HIGH QUALITY, HIGH EFFICIENCY CORNELL PRODUCT.



MARKET AND PRODUCT LINE



AGRICULTURAL



FOOD PROCESS



INDUSTRIAL



MINE DEWATERING



MUNICIPAL



REFRIGERATION



OIL & GAS



CYCLOSEAL®



CHOPPER



CUTTER



EDGE™



HYDRAULIC SUBS



HYDRO TURBINE



IMMERSIBLE



MANURE



MP SERIES



MX SERIES



MX MINING



REDI-PRIME®



SELF PRIMING



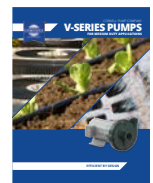
SLURRY



SUBMERSIBLE



WATER TRANSFER



V SERIES

Cycloseal® and Redi-Prime® are Registered Trademarks of Cornell Pump Company.

Cornell pumps and products are the subject of one or more of the following U.S. and foreign patents: 3,207,485; 3,282,226; 3,295,456; 3,301,191; 3,630,637; 3,663,117; 3,743,437; 4,335,886; 4,523,900; 5,489,187; 5,591,001; 6,074,554; 6,036,434; 6,079,958; 6,309,169; 2,320,742; 96/8140; 319,837; 918,534; 1,224,969; 2,232,735; 701,979 and are the subject of pending U.S. and foreign patent applications.

CORNELLPUMP.COM
©2015 CORNELL PUMP COMPANY



Cornell Pump Company
Clackamas, Oregon, USA
P: +1 (503) 653-0330
F: +1 (503) 653-0338

AUTHORIZED CORNELL PUMP DISTRIBUTOR