

BALONNE BULL SALE

BULLS 140 6 Breeds

Monday 7th September, 2015
I I am—Myall Plains, Nindigully



Vendors: | Carabar Angus | Maroobie Angus | Dangarfield Santa Gertrudis
| Swan Hill Santa Gertrudis | Greenup Eidsvold Santa Gertrudis | Kilkenny Charolais
| Blue Dog Simmental | Elkay 2 Droughtmaster | Bottle Tree Blondes





Robert Murray
Randall Spann
Andrew Meara
Brian Wedemeyer
Michael Smith
Lisa Hedges
Blake Munro

0419 644 813
0429 700 332
0427 210 634
0409 694 696
0428 541 711
0427 891 367
0428 862 469

*"Your Breed,
Our Team...
You Succeed"*

www.elders.com.au

Elders

BALONNE

ALL BREEDS BULL SALE

11.00 AM
MONDAY 7th SEPTEMBER, 2015

**MYALL PLAINS
NINDIGULLY**

by kind permission of Ian & Sally Rigney



138 BULLS

COMPRISING:

76	ANGUS
37	SANTA GERTRUDIS
8	DROUGHTMASTER
6	CHAROLAIS
8	SIMMENTAL
3	BLONDES



A RURALCO PARTNER

HARVEY WEYMAN-JONES
0414 941 788

ANDREW WARDLE
0427 255 560



BLAKE MUNRO
0428 862 469

ANDREW GASKE
0417 633 744

Sale information

Inspections

Bulls will be available to be inspected at the Myall Plains Stud Selling Complex from 12 noon Sunday, 6th September. All other inspections may be arranged by contacting the individual vendors and inspecting the bulls on property.

Sale bulls selection

All bulls offered for sale have been inspected by sale agents stud stock staff and have met their approval and recommendation.

Breeding soundness

All bulls offered for sale will have passed a semen fertility test by a registered veterinary surgeon and a semen evaluation certificate will be available on sale day.

Supplementary sheet

Each vendor will have their bulls scanned prior to the sale by a certified scanning technician for eye muscle area, rump and rib fat, marbling (IMF) as well as scrotal size measurement and individual bull weights will be on a supplementary sheet available on the Sunday.

Health

All bulls have received the following inoculations prior to the sale:

5-in-1 or 7-in-1

Lepto and vibrio

3 day sickness

Blooding bulls with 3 germ blood is optional and information on blooded bulls will be available prior to the sale.

Delivery

No deliveries will be made until after the completion of the sale. Deliveries will be made from Myall Plains. GDL St George are delivery agents for the sale.

Phone Andrew Wardle 0427 255 560
or Anthony Hyland 0429 698 612.

Refreshments

Light luncheon will be available at the sales complex.

Phone bidding

Mobile phones operate successfully at the selling complex. If you are unable to attend we recommend you make arrangements with your agent or sale vendor to place bids during the sale.

Airstrips

Myall Plains airstrip is not an all weather strip.

The GPS is S28 19.888 E148 44.919.

The St. George strip is an all weather strip. The St. George GDL or Elders agents are available to pick up from the airport. Prior advice appreciated.

Myall Plains

Myall Plains is well signposted approx 40km south from St. George on the right hand side of Carnarvon Highway. From Goondiwindi T-junction Barwon Hwy and Carnarvon Hwy turn right 6 to 8km turn off left hand side.

Outside agents' rebate

A rebate of 3% is available to agents nominating buyers 24 hours prior to sale in writing and settling on their behalf with seven days of sale.

Insurance

Insurance representatives will be in attendance and are able to insure your purchases on the fall of the hammer.

Risk and responsibility release

- 1 Any person attending the sale does so at his/her own risk.
- 2 All persons attending the sale release the vendor and agents from all actions or demands due to any loss, death, damage or injury occurring on the premises.
- 3 The vendor or agents are not responsible and have no liability for any death or injury to any person or any loss of or damage to any person attending the sale, their property or otherwise.

VENDORS

BREED	STUD	CONTACT	LOT NUMBERS
Angus	Carabar	Darren Hegarty Carabar Meandarra Qld 4665 6164 / 0428 748 542	1 - 26 41 - 55 68 - 76
Angus	Mooroobie	Lindsay & Helen Ward 512 Kildonan Road Goondiwindi Qld 4671 1103 / 0428 350 380	27 - 40 56 - 67
Santa Gertrudis	Dangarfield	Ben & Amanda Adams Kingswood Taroom Qld 4627 3745 / 0427 061 081	77 - 86
Santa Gertrudis	Swan Hill	Cam Russell Swan Hill Blackall Qld 4657 6939 / 0419 700 288	87 - 105
Santa Gertrudis	Greenup Eidsvold	Rick & Alice Greenup Cardowan Kumbia Qld 4164 4260 / 0427 644 260	106 - 113
Droughtmaster	Elkay 2	Lach & Kate McMaster Jindabyne Bungunya Qld 4677 6177 / 0428 776 177	114 - 121
Charolais	Kilkenny	Mike Lawlor Verbena Park Taroom Qld 0428 745 095	122 - 127
Simmental	Blue Dog	Jan & Doug Bradshaw Red Range Wandoan Qld 4627 8133 / 0438 278 106	128 - 135
Blonde d'Aquitaine	Bottle Tree	Michael & Kay O'Neill 362 Cinnabar Road, MS 372, Cinnabar via Gympie Qld 5484 1547 / 0447 008 228	136 - 138

Balonne 2014 Sale Results				
BREED	# SOLD	GROSS \$	AVG \$	TOP \$
Angus	59 / 59	242,000	4102	7500
Brangus	3 / 10	7,500	2500	2500
Charolais	8 / 19	21,500	2688	3500
Santa	27 / 27	89,000	3296	5500
Total	92 / 121	366,000	3696	7500

Balonne 2013 Sale Results				
BREED	# SOLD	GROSS \$	AVG \$	TOP \$
Angus	48 / 48	201,000	4,188	7000
Brangus	11 / 15	32,750	2977	4000
Charolais	23 / 24	76,500	3326	6000
Santa	27 / 29	90,250	3343	6500
Total	109 / 116	400,000	3674	7000

Balonne 2012 Sale Results				
BREED	# SOLD	GROSS \$	AVG \$	TOP \$
Angus	38 / 38	244,500	6313	10,500
Santa	40 / 57	166,000	4150	7000
Charolais	29 / 30	116,000	4000	6500
Brangus	7 / 9	26,500	3786	5000
Total	114 / 134	553,000	4851	10,500

Balonne 2011 Sale Results				
BREED	# SOLD	GROSS \$	AVG \$	TOP \$
Angus	47 / 47	311,000	6617	10,500
Senegus	4 / 5	15,500	3875	5000
Santa	48 / 48	308,000	6417	11,500
Charolais	29 / 29	153,000	5276	9000
Total	128 / 129	787,500	6152	11,500

Balonne 2010 Sale Results				
BREED	# SOLD	GROSS \$	AVG \$	TOP \$
Angus	46 / 50	189,500	4119	6500
Santa	41 / 45	174,500	4256	8500
Charbray	6 / 10	17,500	2916	4000
Charolais	36 / 46	107,500	2986	6500
Total	129 / 151	489,000	3790	8500

A brief description of EBVs and \$Index values:

ACCURACY (%) — Provides an indication of the reliability of an EBV. As available on an animal (or its progeny, or relatives) then the accuracy of its EBVs for particular traits will increase.

CALVING EASE DIR (%) — Estimates of the genetic differences between animals in the ability of their calves, from 2 years old heifers, to be delivered without assistance.

CALVING DEASE DTRS (%) — Estimate of the genetic differences between animals in the ability of their 2 year old daughters to calve without assistance.

GESTATION LENGTH (DAYS) — Estimates of the genetic difference between animals in the number of days from the date of conception to the calf birth day.

BIRTH WT (KG) — Estimates of the genetic differences between animals in calf birth weight.

200 DAY WT (KG) — Estimates of the genetic differences between animals in liveweight at 200 days of age.

400 DAY WT (KG) — Estimates of the genetic differences between animals in liveweight at 400 days of age.

600 DAY WT (KG) — Estimates of the genetic differences between animals in liveweight at 600 days of age.

MATURE COW WT (KG) — Estimates of the genetic differences between animals in cow weight at 5 years of age.

MILK (KG) — Estimates of the genetic differences between animals in milk and animals in percentage retail beef yield, in a 300kg carcass.

INTRA-MUSCULAR FAT (IMF%) — Estimates of the genetic differences between animals in percentage intra-muscular fat (marbling) at the 12/13th rib site, in a 300kg carcass.

LONG FED / CAAB INDEX (\$) — Estimates of the genetic differences between animals in net profitability per cow joined for an example high fertility self replacing commercial herd in temperate Australia targeting pasture grown steer with a 270 day feedlot finishing period for high quality, high marble Japanese export market.

HEAVY GRASS FED STEER INDEX (\$) — Estimates of the genetic differences between animals in net profitability per cow joined for an example self replacing commercial herd in temperate Australia that sells heavy grass fed steers for market like the EU and light grass fed Jap Ox.

SHORT FED DOMESTIC INDEX (\$) — Estimates of the genetic differences between animals in net profitability per cow joined for an example high fertility self replacing commercial herd selling feeder steers and heifers for the short fed domestic feedlot trade.

TERMINAL INDEX (\$) — Estimates of the genetic differences between animals in net profitability per cow joined for an example commercial crossbred herd in northern Australia using bulls over tropical adapted cows fed for the Japanese B2 market.

ANGUS – PERCENTILE BANDS FOR 2013 BORN CALVES																								
Percentile Band	Calving Ease Dir (%)	Calving Ease Dtrs (%)	Gestation Length (days)	Birth Wt. (kg)	200 Day Wt. (kg)	400 Day Wt. (kg)	600 Day Wt. (kg)	Mat. Cow Wt. (kg)	Milk (kg)	Scrotal Size (cm)	Days to Calving (days)	Carcass Wt. (kg)	Eye Muscle Area (sq.cm)	Rib Fat (mm)	Rump Fat (mm)	Retail Beef Yield (%)	IMF (%)	NFI-P (kg/day)	NFI-F (kg/day)	Dockility (Trial)	Angus Breeding Index	Domestic Index	Heavy Grain Index	Heavy Grass Index
Top Value	+7.2	+6.3	-15.1	-2.7	+66	+124	+172	+170	+36	+5.7	-11.1	+105	+14.8	+6.1	+6.9	+4.8	+5.1	-1.51	-1.72	+42	+164	+139	+196	+151
Top 1%	+5.1	+4.4	-8.6	+0.9	+55	+98	+133	+131	+23	+3.3	-7.6	+79	+9.4	+2.6	+3.0	+2.1	+3.5	-0.41	-0.52	+31	+139	+122	+157	+130
Top 5%	+3.9	+3.4	-6.7	+1.9	+51	+91	+122	+116	+20	+2.8	-6.5	+72	+7.6	+1.7	+2.0	+1.5	+3.0	-0.25	-0.29	+22	+128	+116	+141	+121
Top 10%	+3.2	+2.7	-5.8	+2.5	+48	+87	+116	+109	+19	+2.5	-5.9	+68	+6.8	+1.2	+1.5	+1.2	+2.7	-0.18	-0.19	+18	+122	+112	+132	+117
Top 15%	+2.6	+2.3	-5.2	+2.9	+47	+85	+113	+105	+18	+2.3	-5.4	+66	+6.2	+1.0	+1.1	+1.0	+2.4	-0.13	-0.12	+14	+117	+110	+126	+114
Top 20%	+2.2	+1.9	-4.8	+3.2	+46	+83	+110	+101	+17	+2.2	-5.1	+63	+5.8	+0.7	+0.9	+0.9	+2.2	-0.09	-0.07	+12	+114	+108	+121	+111
Top 25%	+1.8	+1.6	-4.5	+3.4	+45	+81	+107	+98	+16	+2.1	-4.9	+62	+5.4	+0.6	+0.7	+0.8	+2.0	-0.06	-0.03	+10	+111	+106	+117	+109
Top 30%	+1.4	+1.2	-4.2	+3.6	+44	+80	+105	+95	+16	+1.9	-4.6	+60	+5.1	+0.4	+0.5	+0.7	+1.9	-0.03	+0.00	+8	+109	+105	+114	+107
Top 35%	+1.1	+1.0	-3.9	+3.8	+43	+78	+103	+93	+15	+1.9	-4.4	+59	+4.8	+0.3	+0.3	+0.6	+1.7	+0.00	+0.04	+6	+107	+103	+110	+105
Top 40%	+0.7	+0.7	-3.7	+4.0	+42	+77	+101	+90	+15	+1.8	-4.2	+57	+4.6	+0.1	+0.2	+0.5	+1.6	+0.02	+0.07	+5	+105	+102	+107	+104
Top 45%	+0.4	+0.4	-3.5	+4.2	+42	+76	+99	+88	+14	+1.7	-4.0	+56	+4.3	+0.0	+0.0	+0.4	+1.5	+0.05	+0.10	+3	+103	+101	+104	+102
Top 50%	+0.0	+0.1	-3.2	+4.4	+41	+74	+97	+86	+14	+1.6	-3.8	+54	+4.1	-0.1	-0.1	+0.3	+1.4	+0.07	+0.13	+2	+101	+99	+101	+100
Top 55%	-0.3	-0.1	-3.0	+4.5	+40	+73	+95	+84	+13	+1.5	-3.5	+53	+3.8	-0.2	-0.3	+0.2	+1.3	+0.09	+0.16	+0	+98	+98	+98	+99
Top 60%	-0.7	-0.4	-2.8	+4.7	+39	+72	+93	+81	+13	+1.4	-3.3	+52	+3.6	-0.4	-0.4	+0.1	+1.2	+0.12	+0.20	-1	+96	+97	+94	+97
Top 65%	-1.0	-0.7	-2.5	+4.9	+38	+70	+91	+79	+12	+1.3	-3.0	+50	+3.3	-0.5	-0.6	+0.0	+1.1	+0.14	+0.23	-2	+94	+95	+91	+95
Top 70%	-1.5	-1.1	-2.3	+5.1	+37	+69	+89	+76	+12	+1.2	-2.7	+48	+3.1	-0.6	-0.7	-0.1	+1.0	+0.17	+0.26	-4	+91	+94	+87	+93
Top 75%	-1.9	-1.4	-2.0	+5.3	+36	+67	+87	+74	+11	+1.1	-2.4	+46	+2.8	-0.8	-0.9	-0.2	+0.8	+0.20	+0.30	-5	+88	+92	+83	+91
Top 80%	-2.5	-1.9	-1.7	+5.6	+35	+65	+84	+71	+11	+1.0	-2.0	+44	+2.5	-1.0	-1.1	-0.3	+0.7	+0.23	+0.34	-7	+85	+90	+78	+88
Top 85%	-3.1	-2.4	-1.3	+5.8	+33	+63	+80	+67	+10	+0.9	-1.5	+42	+2.1	-1.2	-1.3	-0.5	+0.6	+0.26	+0.40	-9	+80	+87	+72	+85
Top 90%	-4.0	-3.1	-0.8	+6.2	+31	+60	+76	+62	+9	+0.7	-0.8	+38	+1.6	-1.5	-1.7	-0.7	+0.4	+0.31	+0.46	-11	+74	+84	+63	+80
Top 95%	-5.4	-4.2	+0.0	+6.7	+28	+55	+69	+55	+7	+0.4	+0.3	+32	+0.9	-1.9	-2.1	-1.0	+0.1	+0.38	+0.56	-15	+63	+78	+47	+72
Top 99%	-8.5	-6.5	+1.8	+7.8	+21	+45	+52	+39	+4	-0.2	+2.8	+22	-0.4	-2.7	-3.1	-1.6	-0.3	+0.50	+0.73	-21	+39	+65	+13	+53
Low Value	-25.7	-17.9	+9.9	+12.2	-2	-2	-16	-23	-3	-3.6	+12.5	-4	-4.2	-5.5	-7.0	-3.4	-1.7	+0.81	+1.56	-34	-8	+30	-57	+12

SANTA – PERCENTILE BANDS FOR 2013 BORN CALVES																		
Percentile Band	Gestation Length (days)	Birth Wt (kg)	200 Day Wt (kg)	400 Day Wt (kg)	600 Day Wt (kg)	Mat Cow Wt (kg)	Milk (kg)	Scrotal Size (cm)	Days to Calving (days)	Carcass Wt (kg)	Eye Muscle Area (sq cm)	Rib Fat (mm)	Rump Fat (mm)	Retail Beef Yield (%)	IMF (%)	Domestic Index (\$)	Export Index (\$)	Flight Time (secs)
Top Value	-3.9	-5.1	+31	+48	+72	+77	+10	+5.6	-16.4	+32	+7.5	+4.5	+4.9	+2.5	+1.1	+38	+54	+0.60
Top 1%	-2.4	-2.4	+25	+37	+55	+64	+6	+2.5	-10.4	+26	+5.6	+1.8	+1.9	+1.9	+0.5	+29	+38	+0.32
Top 5%	-1.5	-0.8	+20	+31	+45	+52	+4	+1.9	-6.2	+21	+4.6	+1.2	+1.1	+1.6	+0.3	+25	+31	+0.18
Top 10%	-1.1	-0.3	+18	+27	+40	+47	+3	+1.6	-4.3	+19	+4.0	+0.9	+0.8	+1.4	+0.2	+22	+27	+0.13
Top 15%	-0.8	+0.0	+16	+25	+36	+43	+3	+1.4	-3.3	+17	+3.6	+0.7	+0.5	+1.2	+0.2	+21	+25	+0.10
Top 20%	-0.7	+0.2	+15	+23	+33	+39	+2	+1.3	-2.5	+16	+3.3	+0.6	+0.3	+1.1	+0.1	+19	+23	+0.08
Top 25%	-0.6	+0.4	+14	+22	+31	+37	+2	+1.1	-1.8	+15	+3.0	+0.5	+0.2	+1.0	+0.1	+18	+22	+0.06
Top 30%	-0.5	+0.6	+13	+20	+29	+34	+2	+1.0	-1.2	+14	+2.8	+0.4	+0.1	+1.0	+0.1	+17	+20	+0.05
Top 35%	-0.5	+0.7	+12	+19	+27	+32	+1	+0.9	-0.7	+13	+2.6	+0.3	+0.0	+0.9	+0.1	+16	+19	+0.04
Top 40%	-0.4	+0.9	+12	+18	+25	+30	+1	+0.8	-0.1	+12	+2.5	+0.2	-0.2	+0.8	+0.0	+16	+18	+0.03
Top 45%	-0.3	+1.0	+11	+17	+23	+28	+1	+0.8	+0.3	+11	+2.3	+0.1	-0.3	+0.8	+0.0	+15	+17	+0.03
Top 50%	-0.3	+1.1	+10	+16	+22	+26	+1	+0.7	+0.8	+11	+2.2	+0.0	-0.4	+0.7	+0.0	+14	+16	+0.02
Top 55%	-0.2	+1.3	+9	+15	+20	+24	+0	+0.6	+1.3	+10	+2.0	+0.0	-0.5	+0.7	-0.1	+13	+15	+0.01
Top 60%	-0.2	+1.4	+9	+14	+19	+21	+0	+0.5	+1.7	+9	+1.9	-0.1	-0.6	+0.6	-0.1	+12	+14	+0.00
Top 65%	-0.1	+1.5	+8	+13	+17	+19	+0	+0.4	+2.3	+8	+1.7	-0.2	-0.7	+0.6	-0.1	+12	+12	+0.00
Top 70%	-0.1	+1.7	+7	+12	+16	+17	-1	+0.3	+2.9	+8	+1.6	-0.3	-0.8	+0.5	-0.1	+11	+11	-0.01
Top 75%	+0.0	+1.9	+6	+10	+14	+15	-1	+0.2	+3.4	+7	+1.4	-0.4	-0.9	+0.4	-0.2	+10	+10	-0.02
Top 80%	+0.0	+2.1	+5	+9	+12	+12	-1	+0.0	+4.1	+6	+1.3	-0.5	-1.0	+0.4	-0.2	+9	+8	-0.04
Top 85%	+0.1	+2.3	+4	+7	+9	+9	-2	-0.1	+4.9	+4	+1.1	-0.6	-1.2	+0.3	-0.3	+7	+6	-0.05
Top 90%	+0.2	+2.7	+2	+5	+6	+4	-3	-0.3	+6.0	+3	+0.8	-0.8	-1.4	+0.2	-0.3	+6	+4	-0.07
Top 95%	+0.4	+3.4	+0	+2	+1	-3	-3	-0.7	+7.4	+1	+0.5	-1.0	-1.7	+0.0	-0.5	+4	+0	-0.09
Top 99%	+1.1	+5.2	-4	-4	-6	-16	-6	-1.3	+10.6	-2	-0.1	-1.5	-2.2	-0.3	-0.7	-1	-6	-0.16
Low Value	+3.5	+7.3	-12	-15	-18	-40	-10	-2.3	+20.7	-9	-1.3	-2.4	-3.7	-1.1	-1.0	-9	-25	-0.31

CARABAR ANGUS

CARABAR ANGUS STUD was established by the Hegarty Family at Meandarra in 2001. Top females and embryos were purchased from leading studs throughout Australia. Quality females and a few bulls are purchased to broaden the Boodlines. Structural soundness with soft easy doing ability and quite temperaments are requirements of our donor cows. The ability to lay on fat cover is important both in sale stock and to help carry cattle through dry times.

This years Bulls are the Progeny of some outstanding Sire and Dams amongst them are. Home Bred Sire Carabar Docklands D62 is No 5 Bull in Australia with over 2100 Progeny recorded in the past two years in over 118 Studs in Australia and New Zealand. Docklands is represented by 2 very good sons in this sale J107 and J121 both with their sires positive fat cover. The Grange Wheel Wright D6 is a long bodied thickset bull who adds thickness and weight to his progeny and has positive fat cover Wheel Wright has 13 sons in this sale. Tuwharetoa Regent D145 has many progeny recorded in over 100 stud. Used for his thickness, high growth and carcass, very high marbling and positive fat cover. Regent is represented in this sale by 10 outstanding sons. Te Mainia Berkley B1 is also one of the most widely used sires in Australia. Low birthweight bull with high growth and carcass, positive fat cover and high marbling. Berkley B1 has 2 sons in this sale.

Some of the outstanding dams include . Booroomooka Tracy T4 , Dam and Grandam of numerous top progeny including Carabar Docklands D62 . Tracy is represented in this sale by 1 son J70 a large framed free moving bull by Tuwharetoa Regent D145. Carabar Blackcap Mary B12 is an outstanding donor cow. She is a daughter of Booroomooka Tracy T4 is the dam of Carabar Docklands D62 and many other outstanding progeny. B12 has 6 sons in this sale. Carabar Blackcap Mary D6 is another daughter of Booroomooka Tracy T4. D6 was champion angus cow at beef 2012, and many other show D6 is represented in this sale by 9 very good sons.

DARREN HEGARTY

07 46656164 | 0428748542

Email carabarangus1@bigpond.com

Web www.carabarangus.com.au

Lot 1

CARABAR WHEEL WRIGHT J196

Reg HBR

ID QHEJ196

DOB 02/12/2013

SIRE HYLINE RIGHT TIME 338 (ET)
EFTD6 THE GRANGE WHEEL WRIGHT D6 (AI) (ET)
IMRAN MISS VEGAS U20 (AI) (ET)

DAM STONEY POINT EQUATOR Y28 (AI) (ET)
QHED9 CARABAR BLACKCAP MARY D9 (AI) (ET)
BOOROOMOOKA TRACY T4 (AI) (ET)



July 2015 Angus Australia BREEDPLAN																	
	CE	CE	GL	BW	200	400	600	MC	Milk	SS	DC	CWE	EMA	Rib	Rump	RBV	IMF
EBV	-1.4	+0.6	-4.5	+5.4	+49	+92	+119	+106	+17	+2.4	-3.9	+69	+3.7	+0.3	+2.5	-0.5	+1.5
Acc	51%	43%	61%	74%	67%	67%	67%	63%	55%	68%	41%	58%	58%	59%	60%	56%	55%
\$ INDEX VALUES			Angus Breeding: +\$110				Domestic: +\$105				Heavy Grain: +\$108				Heavy Grass: +\$112		

Wtkg Scrcm Rib/P8Fatmm/.....mm Dent EMAcm² IMF% DamCalvesYears

Comments: Stud potential: Had successful show career this year. Class winner Sydney, Champion Junior Bull Angus Feature Show Wandoan, Class Winner Beef 2015. Another top grandson of Booroomooka Tracy T4.

Purchaser

Price \$

Lot 2**CARABAR WHEEL WRIGHT J55**

Reg HBR

ID QHEJ55

DOB 03/08/2013

HYLINE RIGHT TIME 338 (ET)
SIRE EFTD6 THE GRANGE WHEEL WRIGHT D6 (AI) (ET)
 IMRAN MISS VEGAS U20 (AI) (ET)

C A FUTURE DIRECTION 5321
DAM QHEZ24 CARABAR HEATHER Z24 (AI) (ET)
 COMFORT HILL HEATHER X27 (AI)

**SIRE**

July 2015 Angus Australia BREEDPLAN

	CE	CE	GL	BW	200	400	600	MC	Milk	SS	DC	CWE	EMA	Rib	Rump	RBY	IMF
EBV	-2.0	-0.5	-1.5	+6.3	+55	+95	+131	+111	+16	+1.8	-3.2	+77	+6.0	-0.1	+0.5	+0.3	+1.3
Acc	54%	46%	60%	70%	69%	70%	74%	67%	58%	75%	45%	62%	63%	63%	64%	59%	58%
\$ INDEX VALUES			Angus Breeding: +\$116				Domestic: +\$106				Heavy Grain: +\$116				Heavy Grass: +\$118		

Wtkg Scrcm Rib/P8Fatmm/.....mm Dent EMAcm² IMF% DamCalvesYears

Comments: The second of 13 sons of The Grange Wheelwright D6 in this sale. Good body length, depth and frame. High growth, carcase and eye muscle. Dam Z24 is a top donor cow.

Purchaser Price \$

Lot 3**CARABAR JUDGE J70 (AI) (ET)**

Reg HBR

ID QHEJ70

DOB 06/08/2013

TE MANIA AMBASSADOR A134 (AI)
SIRE BNAD145 TUWHARETOA REGENT D145 (AI) (ET)
 LAWSONS HENRY VIII Y5 (AI)

SUMMITCREST SCOTCH CAP OB45
DAM NGMT4 BOOROOMOOKA TRACY T4 (AI) (ET)
 SUMMITCREST BLKCAP MARY E210 (ET)

**SIRE**

July 2015 Angus Australia BREEDPLAN

	CE	CE	GL	BW	200	400	600	MC	Milk	SS	DC	CWE	EMA	Rib	Rump	RBY	IMF
EBV	-4.5	-4.1	-2.5	+6.7	+47	+88	+121	+110	+15	+2.0	-2.8	+72	+3.2	+0.9	+1.4	-1.3	+2.9
Acc	64%	58%	67%	77%	71%	70%	71%	70%	67%	68%	52%	66%	64%	65%	65%	63%	63%
\$ INDEX VALUES			Angus Breeding: +\$104				Domestic: +\$92				Heavy Grain: +\$115				Heavy Grass: +\$101		

Wtkg Scrcm Rib/P8Fatmm/.....mm Dent EMAcm² IMF% DamCalvesYears

Comments: A free-moving, larger-framed bull with good growth, carcase and marbling. Dam Booroomooka Tracy T4 is an outstanding donor female. Positive fat cover.

Purchaser Price \$

Lot 4**CARABAR REGENT J77 (AI) (ET)**

Reg HBR

ID QHEJ77

DOB 08/08/2013

TE MANIA AMBASSADOR A134 (AI)
SIRE BNAD145 TUWHARETOA REGENT D145 (AI) (ET)
 LAWSONS HENRY VIII Y5 (AI)

TE MANIA YORKSHIRE Y437 (AI)
DAM QHED6 CARABAR BLACKCAP MARY D6 (AI) (ET)
 BOOROOMOOKA TRACY T4 (AI) (ET)

**SIRE**

July 2015 Angus Australia BREEDPLAN

	CE	CE	GL	BW	200	400	600	MC	Milk	SS	DC	CWE	EMA	Rib	Rump	RBY	IMF
EBV	-1.3	-1.5	-3.6	+5.5	+52	+97	+131	+122	+16	+2.1	-4.0	+83	+3.9	-0.1	-0.3	-1.0	+3.3
Acc	60%	55%	61%	76%	70%	70%	74%	70%	60%	74%	49%	65%	64%	64%	66%	62%	61%
\$ INDEX VALUES			Angus Breeding: +\$126				Domestic: +\$109				Heavy Grain: +\$147				Heavy Grass: +\$118		

Wtkg Scrcm Rib/P8Fatmm/.....mm Dent EMAcm² IMF% DamCalvesYears

Comments: Good type of bull, long-bodied with a good frame, high growth, carcase and very high marbling. Dam D6 is a very good donor cow who was Champion Angus Cow at Beef 2012. Flush brother to J89.

Purchaser Price \$

Lot 5**CARABAR WHEEL WRIGHT J83 (AI) (ET)** Reg HBR ID QHEJ83 DOB 12/08/2013

HYLINE RIGHT TIME 338 (ET)
SIRE EFTD6 THE GRANGE WHEEL WRIGHT D6 (AI) (ET)
 IMRAN MISS VEGAS U20 (AI) (ET)

TE MANIA YORKSHIRE Y437 (AI)
DAM QHED6 CARABAR BLACKCAP MARY D6 (AI) (ET)
 BOOROOMOOKA TRACY T4 (AI) (ET)



July 2015 Angus Australia BREEDPLAN

	CE	CE	GL	BW	200	400	600	MC	Milk	SS	DC	CWE	EMA	Rib	Rump	RBY	IMF
EBV	+0.3	+2.4	-3.7	+6.0	+57	+105	+141	+128	+15	+2.9	-4.3	+80	+3.9	-0.4	+1.2	-0.2	+2.0
Acc	52%	45%	58%	75%	69%	69%	73%	67%	54%	72%	44%	60%	61%	61%	62%	58%	56%
\$ INDEX VALUES				Angus Breeding: +\$138				Domestic: +\$121				Heavy Grain: +\$148				Heavy Grass: +\$134	

Wtkg Scrcm Rib/P8Fatmm/.....mm Dent EMAcm² IMF% DamCalvesYears

Comments: A long-bodied, solid type of bull. High growth, carcase and marbling figures. The cross of the two D6s has worked very well.

Purchaser Price \$

Lot 6**CARABAR BOLLON J84 (AI) (ET)** Reg HBR ID QHEJ84 DOB 12/08/2013

ARDROSSAN DIRECTION W109 (AI) (ET)
SIRE QHEB35 CARABAR BOLLON DIRECTION W109 B35 (AI) (ET)
 BOOROOMOOKA TRACY T4 (AI) (ET)

S A NEUTRON 377
DAM QHEC5 CARABAR HEATHER C5 (AI) (ET)
 CARABAR HEATHER Z24 (AI) (ET)



July 2015 Angus Australia BREEDPLAN

	CE	CE	GL	BW	200	400	600	MC	Milk	SS	DC	CWE	EMA	Rib	Rump	RBY	IMF
EBV	+0.4	-0.1	-4.1	+5.5	+48	+88	+120	+108	+15	+1.9	-3.8	+71	+5.4	-0.2	+0.6	+0.4	+0.6
Acc	50%	43%	52%	74%	68%	68%	72%	66%	53%	71%	44%	60%	60%	61%	62%	57%	55%
\$ INDEX VALUES				Angus Breeding: +\$108				Domestic: +\$103				Heavy Grain: +\$102				Heavy Grass: +\$112	

Wtkg Scrcm Rib/P8Fatmm/.....mm Dent EMAcm² IMF% DamCalvesYears

Comments: A moderate-framed, thickset type of bull, easy-doing, good growth, carcase and eye muscle.

Purchaser Price \$

Lot 7**CARABAR REGENT J89 (AI) (ET)** Reg HBR ID QHEJ89 DOB 12/08/2013

TE MANIA AMBASSADOR A134 (AI)
SIRE BNAD145 TUWHARETOA REGENT D145 (AI) (ET)
 LAWSONS HENRY VIII Y5 (AI)

TE MANIA YORKSHIRE Y437 (AI)
DAM QHED6 CARABAR BLACKCAP MARY D6 (AI) (ET)
 BOOROOMOOKA TRACY T4 (AI) (ET)



July 2015 Angus Australia BREEDPLAN

	CE	CE	GL	BW	200	400	600	MC	Milk	SS	DC	CWE	EMA	Rib	Rump	RBY	IMF
EBV	-0.9	-1.3	-3.5	+5.0	+51	+96	+127	+115	+17	+3.4	-5.4	+81	+4.7	+0.7	+0.6	-0.9	+3.2
Acc	60%	55%	61%	76%	70%	70%	74%	70%	60%	74%	49%	65%	64%	64%	66%	62%	61%
\$ INDEX VALUES				Angus Breeding: +\$131				Domestic: +\$113				Heavy Grain: +\$150				Heavy Grass: +\$122	

Wtkg Scrcm Rib/P8Fatmm/.....mm Dent EMAcm² IMF% DamCalvesYears

Comments: Very good bull. Flush brother to J77. Solid type with body depth and frame, moderate birthweight, high growth and carcase figures. Very high marbling. Positive fat cover.

Purchaser Price \$

Lot 8**CARABAR WHEEL WRIGHT J90**

Reg HBR

ID QHEJ90

DOB 13/08/2013

HYLINE RIGHT TIME 338 (ET)
SIRE EFTD6 THE GRANGE WHEEL WRIGHT D6 (AI) (ET)
 IMRAN MISS VEGAS U20 (AI) (ET)

BON VIEW NEW DESIGN 1407
DAM QHEC14 CARABAR BLACKCAP MARY C14 (AI) (ET)
 BOOROOMOOKA TRACY T4 (AI) (ET)



July 2015 Angus Australia BREEDPLAN

	CE	CE	GL	BW	200	400	600	MC	Milk	SS	DC	CWE	EMA	Rib	Rump	RBY	IMF
EBV	+0.8	+1.2	-3.3	+5.9	+55	+99	+140	+118	+16	+2.5	-3.4	+72	+3.8	-0.4	+0.9	-0.1	+2.1
Acc	52%	46%	59%	74%	69%	69%	74%	67%	55%	74%	45%	61%	61%	62%	63%	58%	57%
\$ INDEX VALUES				Angus Breeding: +\$136				Domestic: +\$116				Heavy Grain: +\$146				Heavy Grass: +\$132	

Wtkg Scrcm Rib/P8Fatmm/.....mm Dent EMAcm² IMF% DamCalvesYears

Comments: This bull has stud potential. Great eye appeal and presence; good body length and thickness; high growth, carcase and marbling. Very high dollar index values. Grandson of Booroomooka Tracy T4.

Purchaser Price \$

Lot 9**CARABAR WHEEL WRIGHT J119**

Reg HBR

ID QHEJ119

DOB 19/08/2013

HYLINE RIGHT TIME 338 (ET)
SIRE EFTD6 THE GRANGE WHEEL WRIGHT D6 (AI) (ET)
 IMRAN MISS VEGAS U20 (AI) (ET)

ARDROSSAN ADMIRAL A2 (AI) (ET)
DAM QHEE17 CARABAR BARBARA E17 (AI) (ET)
 CARABAR BARBARA Y2 (AI) (ET)



July 2015 Angus Australia BREEDPLAN

	CE	CE	GL	BW	200	400	600	MC	Milk	SS	DC	CWE	EMA	Rib	Rump	RBY	IMF
EBV	-1.9	-1.5	-3.6	+5.7	+49	+86	+114	+99	+16	+2.0	-5.3	+70	+4.2	-1.0	-0.1	+0.5	+1.8
Acc	50%	45%	58%	73%	68%	68%	73%	66%	54%	72%	44%	59%	60%	61%	62%	57%	55%
\$ INDEX VALUES				Angus Breeding: +\$113				Domestic: +\$105				Heavy Grain: +\$119				Heavy Grass: +\$110	

Wtkg Scrcm Rib/P8Fatmm/.....mm Dent EMAcm² IMF% DamCalvesYears

Comments: A good style of long-bodied, thickset bull. High growth and carcase figures and good marbling.

Purchaser Price \$

Lot 10**CARABAR DOCKLANDS J121**

Reg HBR

ID QHEJ121

DOB 19/08/2013

KAROO W109 DIRECTION Z181
SIRE QHED62 CARABAR DOCKLANDS D62 (AI)
 CARABAR BLACKCAP MARY B12 (AI) (ET)

CARABAR BOLLON DIRECTION W109 B35 (AI) (ET)
DAM QHEF75 CARABAR HEATHER F75 (AI)
 CARABAR HEATHER D33 (AI) (ET)



July 2015 Angus Australia BREEDPLAN

	CE	CE	GL	BW	200	400	600	MC	Milk	SS	DC	CWE	EMA	Rib	Rump	RBY	IMF
EBV	+2.7	+1.9	-6.0	+4.8	+48	+91	+125	+100	+19	+3.3	-4.2	+66	+5.9	+0.5	+0.8	+0.5	+1.2
Acc	53%	41%	58%	75%	70%	70%	74%	67%	52%	73%	41%	60%	61%	62%	63%	57%	57%
\$ INDEX VALUES				Angus Breeding: +\$127				Domestic: +\$115				Heavy Grain: +\$128				Heavy Grass: +\$127	

Wtkg Scrcm Rib/P8Fatmm/.....mm Dent EMAcm² IMF% DamCalvesYears

Comments: A moderate-framed, thickset, easy-doing bull with style, moderate birthweight, good growth and carcase figures. Positive fat cover.

Purchaser Price \$

Lot 11**CARABAR GUN SMOKE J134**

Reg HBR

ID QHEJ134

DOB 09/09/2013

TE MANIA BERKLEY B1 (AI)
SIRE QHEG53 CARABAR GUN SMOKE G53 (AI) (ET)
 CARABAR HEATHER Z24 (AI) (ET)

BON VIEW NEW DESIGN 1407
DAM QHEF93 CARABAR BLACKCAP MARY F93 (AI) (ET)
 BOOROOMOOKA TRACY T4 (AI) (ET)



July 2015 Angus Australia BREEDPLAN

	CE	CE	GL	BW	200	400	600	MC	Milk	SS	DC	CWE	EMA	Rib	Rump	RBY	IMF
EBV	+2.7	+2.1	--	+4.5	+49	+89	+124	+106	+15	+1.2	-5.5	+65	+5.7	+0.8	+1.4	-0.8	+2.5
Acc	48%	43%		73%	65%	64%	70%	63%	47%	69%	43%	57%	56%	56%	58%	53%	51%
\$ INDEX VALUES				Angus Breeding: +\$135				Domestic: +\$115				Heavy Grain: +\$147				Heavy Grass: +\$130	

Wtkg Scrcm Rib/P8Fatmm/.....mm Dent EMAcm² IMF% DamCalvesYears

Comments: A top-class bull, some great bloodlines in his pedigree. A soft skin, easy-doing type with good body length and depth. Moderate birthweight, high growth, carcase and marbling. Positive fat cover.

Purchaser Price \$

Lot 12**CARABAR WHEEL WRIGHT J148**

Reg HBR

ID QHEJ148

DOB 18/09/2013

HYLINE RIGHT TIME 338 (ET)
SIRE EFTD6 THE GRANGE WHEEL WRIGHT D6 (AI) (ET)
 IMRAN MISS VEGAS U20 (AI) (ET)

ARDROSSAN ADMIRAL A2 (AI) (ET)
DAM QHEE37 CARABAR ANNIE E37 (AI) (ET)
 KANSAS ANNIE Y18 (AI) (ET)



July 2015 Angus Australia BREEDPLAN

	CE	CE	GL	BW	200	400	600	MC	Milk	SS	DC	CWE	EMA	Rib	Rump	RBY	IMF
EBV	-2.2	-2.5	-3.4	+6.9	+56	+99	+134	+115	+16	+3.5	-6.7	+79	+6.6	-0.1	+1.4	+0.4	+1.6
Acc	51%	45%	58%	73%	68%	68%	73%	66%	53%	72%	44%	60%	60%	61%	62%	57%	56%
\$ INDEX VALUES				Angus Breeding: +\$135				Domestic: +\$116				Heavy Grain: +\$141				Heavy Grass: +\$130	

Wtkg Scrcm Rib/P8Fatmm/.....mm Dent EMAcm² IMF% DamCalvesYears

Comments: This bull will add weight and quality to his progeny. High growth, carcase and marbling. Very high dollar Index Values. Positive fat cover.

Purchaser Price \$

Lot 13**CARABAR BANDIT J97**

Reg HBR

ID QHEJ97

DOB 13/08/2013

BON VIEW NEW DESIGN 1407
SIRE QHEB49 CARABAR BANDIT 1407 B49 (AI) (ET)
 CARABAR HEATHER Z24 (AI) (ET)

CARABAR BOLLON DIRECTION W109 B35 (AI) (ET)
DAM QHEF123 CARABAR BARBARA F123
 CARABAR BARBARA D7 (AI) (ET)



July 2015 Angus Australia BREEDPLAN

	CE	CE	GL	BW	200	400	600	MC	Milk	SS	DC	CWE	EMA	Rib	Rump	RBY	IMF
EBV	+2.4	+0.7	-3.0	+4.5	+48	+85	+120	+96	+16	+1.2	-3.6	+63	+5.2	-0.9	-1.3	+0.6	+1.8
Acc	46%	39%	50%	74%	67%	67%	72%	65%	46%	71%	41%	58%	58%	59%	60%	55%	53%
\$ INDEX VALUES				Angus Breeding: +\$122				Domestic: +\$110				Heavy Grain: +\$128				Heavy Grass: +\$120	

Wtkg Scrcm Rib/P8Fatmm/.....mm Dent EMAcm² IMF% DamCalvesYears

Comments: A thickset, moderate-framed, active type of bull. Moderate birthweight, good growth and carcase figures.

Purchaser Price \$

Lot 14**CARABAR DOCKLANDS J107 (AI)**

Reg HBR

ID QHEJ107

DOB 16/08/2013

KAROO W109 DIRECTION Z181
SIRE QHED62 CARABAR DOCKLANDS D62 (AI)
 CARABAR BLACKCAP MARY B12 (AI) (ET)

CARABAR CRUISER NEUTRON C55 (AI) (ET)
DAM QHEG10 CARABAR GRACE G10
 CARABAR GRACE C28 (AI) (ET)



July 2015 Angus Australia BREEDPLAN

	CE	CE	GL	BW	200	400	600	MC	Milk	SS	DC	CWE	EMA	Rib	Rump	RBY	IMF
EBV	+3.0	+2.0	-5.8	+4.5	+45	+87	+116	+100	+17	+2.9	-4.0	+63	+6.5	+0.7	+1.3	+0.4	+1.0
Acc	52%	40%	57%	75%	69%	69%	74%	67%	51%	73%	40%	59%	60%	61%	62%	56%	56%
\$ INDEX VALUES			Angus Breeding: +\$118				Domestic: +\$111				Heavy Grain: +\$115			Heavy Grass: +\$120			

Wtkg Scrcm Rib/P8Fatmm/.....mm Dent EMAcm² IMF% DamCalvesYears

Comments: Nice type of bull. Moderate-framed, easy-doing with good body depth, low birthweight with good growth and carcase figures. Positive fat cover.

Purchaser Price \$

Lot 15**CARABAR WHEEL WRIGHT J132**

Reg HBR

ID QHEJ132

DOB 09/09/2013

HYLINE RIGHT TIME 338 (ET)
SIRE EFTD6 THE GRANGE WHEEL WRIGHT D6 (AI) (ET)
 IMRAN MISS VEGAS U20 (AI) (ET)

TC STOCKMAN 2164
DAM QHEC28 CARABAR GRACE C28 (AI) (ET)
 YTHANBRAE NEW DESIGN 036 V1037 (AI) (ET)



July 2015 Angus Australia BREEDPLAN

	CE	CE	GL	BW	200	400	600	MC	Milk	SS	DC	CWE	EMA	Rib	Rump	RBY	IMF
EBV	-2.6	+0.5	-2.2	+5.7	+46	+83	+108	+104	+13	+1.6	-3.1	+65	+4.4	-0.5	+0.9	+0.2	+1.3
Acc	51%	45%	58%	73%	68%	68%	73%	66%	55%	72%	44%	60%	60%	61%	62%	57%	56%
\$ INDEX VALUES			Angus Breeding: +\$97				Domestic: +\$97				Heavy Grain: +\$93			Heavy Grass: +\$99			

Wtkg Scrcm Rib/P8Fatmm/.....mm Dent EMAcm² IMF% DamCalvesYears

Comments: A moderate-frame bull with good growth and carcase figures. Dam C28 is a good cow sired by T C Stockman 2164.

Purchaser Price \$

Lot 16**CARABAR WHEEL WRIGHT J167**

Reg HBR

ID QHEJ167

DOB 03/10/2013

HYLINE RIGHT TIME 338 (ET)
SIRE EFTD6 THE GRANGE WHEEL WRIGHT D6 (AI) (ET)
 IMRAN MISS VEGAS U20 (AI) (ET)

ARDROSSAN ADMIRAL A2 (AI) (ET)
DAM QHEE15 CARABAR BARBARA E15 (AI) (ET)
 CARABAR BARBARA Y2 (AI) (ET)



July 2015 Angus Australia BREEDPLAN

	CE	CE	GL	BW	200	400	600	MC	Milk	SS	DC	CWE	EMA	Rib	Rump	RBY	IMF
EBV	-3.2	-2.1	-3.3	+6.3	+51	+88	+118	+104	+16	+1.5	-4.7	+72	+4.4	-1.3	-0.6	+0.6	+1.8
Acc	50%	45%	58%	74%	68%	68%	73%	66%	53%	72%	44%	59%	60%	60%	62%	57%	55%
\$ INDEX VALUES			Angus Breeding: +\$111				Domestic: +\$103				Heavy Grain: +\$116			Heavy Grass: +\$108			

Wtkg Scrcm Rib/P8Fatmm/.....mm Dent EMAcm² IMF% DamCalvesYears

Comments: A quality bull, thickset with a moderate frame. Typical Wheelwright son with high growth, carcase and marbling.

Purchaser Price \$

Lot 17**CARABAR WHEEL WRIGHT J174****Reg** HBR **ID** QHEJ174 **DOB** 14/10/2013

HYLINE RIGHT TIME 338 (ET)
SIRE EFTD6 THE GRANGE WHEEL WRIGHT D6 (AI) (ET)
 IMRAN MISS VEGAS U20 (AI) (ET)

G A R PREDESTINED
DAM QHED111 CARABAR BLACKCAP MARY D111 (AI) (ET)
 BOOROOMOOKA TRACY T4 (AI) (ET)



July 2015 Angus Australia BREEDPLAN																	
	CE	CE	GL	BW	200	400	600	MC	Milk	SS	DC	CWE	EMA	Rib	Rump	RBY	IMF
EBV	-3.4	+0.4	-2.1	+6.9	+52	+92	+121	+105	+16	+2.4	-4.1	+68	+4.6	-0.2	+1.7	-0.1	+2.2
Acc	51%	45%	58%	74%	68%	68%	73%	67%	54%	73%	45%	60%	61%	61%	62%	58%	56%
\$ INDEX VALUES			Angus Breeding: +\$117				Domestic: +\$107				Heavy Grain: +\$123				Heavy Grass: +\$114		

Wtkg Scrcm Rib/P8Fatmm/.....mm Dent EMAcm² IMF% DamCalvesYears

Comments: Another moderate-framed Wheelwright son with the same high growth and carcase figures, very high marbling, positive fat cover.

Purchaser Price \$

Lot 18**CARABAR WHEEL WRIGHT J184 (AI) (ET)** **Reg** HBR **ID** QHEJ184 **DOB** 29/10/2013

HYLINE RIGHT TIME 338 (ET)
SIRE EFTD6 THE GRANGE WHEEL WRIGHT D6 (AI) (ET)
 IMRAN MISS VEGAS U20 (AI) (ET)

STONE POINT EQUATOR Y28 (AI) (ET)
DAM QHED18 CARABAR BLACKCAP MARY D18 (AI) (ET)
 BOOROOMOOKA TRACY T4 (AI) (ET)



July 2015 Angus Australia BREEDPLAN																	
	CE	CE	GL	BW	200	400	600	MC	Milk	SS	DC	CWE	EMA	Rib	Rump	RBY	IMF
EBV	-1.1	+0.6	-4.0	+5.9	+48	+90	+121	+113	+16	+2.0	-2.7	+68	+3.1	-0.7	+1.1	+0.1	+1.3
Acc	51%	43%	59%	74%	68%	68%	73%	67%	55%	72%	42%	60%	60%	61%	62%	57%	55%
\$ INDEX VALUES			Angus Breeding: +\$107				Domestic: +\$102				Heavy Grain: +\$106				Heavy Grass: +\$109		

Wtkg Scrcm Rib/P8Fatmm/.....mm Dent EMAcm² IMF% DamCalvesYears

Comments: A long-bodied bull with a moderate frame. Again high growth and carcase figures.

Purchaser Price \$

Lot 19**CARABAR CRUISER J191****Reg** HBR **ID** QHEJ191 **DOB** 30/10/2013

S A NEUTRON 377
SIRE QHEC55 CARABAR CRUISER NEUTRON C55 (AI) (ET)
 BOOROOMOOKA TRACY T4 (AI) (ET)

VERMILION YELLOWSTONE
DAM QHEC68 CARABAR DIANA C68 (AI) (ET)
 LAWSONS PARAMOUNT X77 (AI) (ET)



July 2015 Angus Australia BREEDPLAN																	
	CE	CE	GL	BW	200	400	600	MC	Milk	SS	DC	CWE	EMA	Rib	Rump	RBY	IMF
EBV	+1.7	+1.2	-4.5	+6.0	+51	+94	+133	+126	+15	+1.7	-4.5	+66	+2.3	+1.5	+2.7	-0.7	+1.0
Acc	49%	42%	50%	73%	67%	66%	72%	65%	51%	72%	43%	58%	59%	59%	60%	56%	54%
\$ INDEX VALUES			Angus Breeding: +\$121				Domestic: +\$106				Heavy Grain: +\$120				Heavy Grass: +\$123		

Wtkg Scrcm Rib/P8Fatmm/.....mm Dent EMAcm² IMF% DamCalvesYears

Comments: Good style of bull. Easy-doing type with plenty of body length. Top growth and carcase figures. Positive fat cover.

Purchaser Price \$

Lot 20**CARABAR REGENT J199 (AI) (ET)**

Reg HBR

ID QHEJ199

DOB 02/11/2013

TE MANIA AMBASSADOR A134 (AI)
SIRE BNAD145 TUWHARETOA REGENT D145 (AI) (ET)
 LAWSONS HENRY VIII Y5 (AI)

G A R PREDESTINED
DAM QHEA46 CARABAR BLACK CAP MARY A46 (MBR) (AI) (ET)
 BOOROOMOOKA TRACY T4 (AI) (ET)



July 2015 Angus Australia BREEDPLAN

	CE	CE	GL	BW	200	400	600	MC	Milk	SS	DC	CWE	EMA	Rib	Rump	RBY	IMF
EBV	-4.9	-4.6	-1.5	+6.5	+49	+88	+118	+103	+17	+1.9	-4.1	+73	+4.3	+0.9	+1.0	-1.4	+3.6
Acc	60%	55%	64%	75%	67%	66%	67%	65%	62%	63%	48%	62%	59%	60%	60%	58%	58%
\$ INDEX VALUES			Angus Breeding: +\$110				Domestic: +\$96				Heavy Grain: +\$127			Heavy Grass: +\$103			

Wtkg Scrcm Rib/P8Fatmm/.....mm Dent EMAcm² IMF% DamCalvesYears

Comments: Another Regent D145 son. Thickset, solidly-built tupe with a moderate frame. Very high marbling. Positive fat cover. Good growth and carcass.

Purchaser Price \$

Lot 21**CARABAR RITO 9969 J201 (AI) (ET)**

Reg HBR

ID QHEJ201

DOB 02/11/2013

RITO 707 OF IDEAL 3407 7075
SIRE USA16417285 S A V 707 RITO 9969
 BR POLLY 8077-472

BON VIEW NEW DESIGN 1407
DAM QHEB12 CARABAR BLACKCAP MARY B12 (AI) (ET)
 BOOROOMOOKA TRACY T4 (AI) (ET)



July 2015 Angus Australia BREEDPLAN

	CE	CE	GL	BW	200	400	600	MC	Milk	SS	DC	CWE	EMA	Rib	Rump	RBY	IMF
EBV	-0.5	-0.3	-3.2	+6.5	+54	+106	+143	+115	+18	+3.1	-3.1	+76	+4.1	-1.5	-0.8	+0.8	+1.1
Acc	48%	37%	62%	75%	69%	69%	73%	65%	54%	73%	39%	60%	60%	61%	61%	56%	55%
\$ INDEX VALUES			Angus Breeding: +\$129				Domestic: +\$117				Heavy Grain: +\$133			Heavy Grass: +\$128			

Wtkg Scrcm Rib/P8Fatmm/.....mm Dent EMAcm² IMF% DamCalvesYears

Comments: The first of two SAV Rito 9969 sons. Dam B12 is a top donor cow. A muscular, solid type of bull with a moderate frame. High growth and carcass.

Purchaser Price \$

Lot 22**CARABAR REGENT J203 (AI) (ET)**

Reg HBR

ID QHEJ203

DOB 02/11/2013

TE MANIA AMBASSADOR A134 (AI)
SIRE BNAD145 TUWHARETOA REGENT D145 (AI) (ET)
 LAWSONS HENRY VIII Y5 (AI)

G A R PREDESTINED
DAM QHEA46 CARABAR BLACK CAP MARY A46 (MBR) (AI) (ET)
 BOOROOMOOKA TRACY T4 (AI) (ET)



July 2015 Angus Australia BREEDPLAN

	CE	CE	GL	BW	200	400	600	MC	Milk	SS	DC	CWE	EMA	Rib	Rump	RBY	IMF
EBV	-4.8	-4.6	-1.7	+6.6	+50	+91	+124	+108	+17	+2.0	-4.1	+75	+3.2	+1.0	+1.3	-1.8	+3.8
Acc	60%	55%	64%	76%	71%	71%	74%	70%	62%	74%	49%	65%	64%	64%	65%	61%	61%
\$ INDEX VALUES			Angus Breeding: +\$114				Domestic: +\$96				Heavy Grain: +\$134			Heavy Grass: +\$106			

Wtkg Scrcm Rib/P8Fatmm/.....mm Dent EMAcm² IMF% DamCalvesYears

Comments: A typical Regent D145 son. A stylish, moderate-framed bull. Very high marbling, growth and carcass figures. Positive fat cover.

Purchaser Price \$

Lot 23**CARABAR WHEEL WRIGHT J207**

Reg HBR

ID QHEJ207

DOB 03/11/2013

HYLINE RIGHT TIME 338 (ET)
SIRE EFTD6 THE GRANGE WHEEL WRIGHT D6 (AI) (ET)
 IMRAN MISS VEGAS U20 (AI) (ET)

VERMILION YELLOWSTONE
DAM QHEC57 CARABAR DIANA C57 (AI) (ET)
 LAWSONS PARAMOUNT X77 (AI) (ET)

**SIRE**

July 2015 Angus Australia BREEDPLAN

	CE	CE	GL	BW	200	400	600	MC	Milk	SS	DC	CWE	EMA	Rib	Rump	RBY	IMF
EBV	-0.8	+1.4	-3.9	+6.4	+53	+94	+131	+126	+14	+2.5	-4.9	+71	+1.6	+0.1	+1.4	-0.2	+1.4
Acc	51%	45%	59%	74%	68%	68%	73%	67%	55%	72%	44%	60%	61%	61%	62%	58%	56%
\$ INDEX VALUES				Angus Breeding: +\$120				Domestic: +\$107			Heavy Grain: +\$124			Heavy Grass: +\$119			

Wtkg Scrcm Rib/P8Fatmm/.....mm Dent EMAcm² IMF% DamCalvesYears

Comments: A Wheelwright D6 son with the usual high growth and carcass figures. A moderate frame with good body length and thickness. Positive fat cover.

Purchaser Price \$

Lot 24**CARABAR BANDIT J208**

Reg HBR

ID QHEJ208

DOB 03/11/2013

BON VIEW NEW DESIGN 1407
SIRE QHEB49 CARABAR BANDIT 1407 B49 (AI) (ET)
 CARABAR HEATHER Z24 (AI) (ET)

TE MANIA BETTER BEEF B177 (AI) (ET)
DAM QHEE93 CARABAR BLACKCAP MARY E93 (AI) (ET)
 BOOROOMOOKA TRACY T4 (AI) (ET)



July 2015 Angus Australia BREEDPLAN

	CE	CE	GL	BW	200	400	600	MC	Milk	SS	DC	CWE	EMA	Rib	Rump	RBY	IMF
EBV	+1.5	+0.8	-2.6	+4.1	+43	+76	+102	+75	+15	+1.6	-3.6	+57	+8.0	-0.4	-0.3	+0.7	+1.9
Acc	48%	41%	54%	71%	63%	61%	63%	59%	50%	72%	41%	54%	57%	57%	59%	54%	52%
\$ INDEX VALUES				Angus Breeding: +\$114				Domestic: +\$108			Heavy Grain: +\$116			Heavy Grass: +\$113			

Wtkg Scrcm Rib/P8Fatmm/.....mm Dent EMAcm² IMF% DamCalvesYears

Comments: A stylish bull with a moderate frame, low birthweight, high eye muscle and marbling.

Purchaser Price \$

Lot 25**CARABAR BODINE J241**

Reg HBR

ID QHEJ241

DOB 02/12/2013

BON VIEW NEW DESIGN 1407
SIRE QHEB16 CARABAR BODINE 1407 B16 (AI) (ET)
 BOOROOMOOKA TRACY T4 (AI) (ET)

VERMILION YELLOWSTONE
DAM QHED36 CARABAR BARBARA D36 (AI) (ET)
 CARABAR BARBARA Y5 (AI) (ET)



July 2015 Angus Australia BREEDPLAN

	CE	CE	GL	BW	200	400	600	MC	Milk	SS	DC	CWE	EMA	Rib	Rump	RBY	IMF
EBV	+2.4	+1.1	-3.7	+5.8	+49	+86	+124	+103	+15	+2.1	-4.8	+56	+2.4	-0.5	+0.1	+0.1	+1.7
Acc	50%	45%	51%	75%	69%	68%	74%	67%	53%	73%	46%	60%	60%	61%	62%	57%	56%
\$ INDEX VALUES				Angus Breeding: +\$124				Domestic: +\$109			Heavy Grain: +\$131			Heavy Grass: +\$122			

Wtkg Scrcm Rib/P8Fatmm/.....mm Dent EMAcm² IMF% DamCalvesYears

Comments: Top class bull with good body length and depth, well above average growth and carcass figures. Some top carcass bloodlines in his pedigree.

Purchaser Price \$

Lot 26

CARABAR JACK J266

Reg HBR

ID QHEJ266

DOB 20/12/2013

SIRE VERMILION YELLOWSTONE
QHEE35 CARABAR ELITE E35 (AI) (ET)
CARABAR BARBARA Y5 (AI) (ET)

DAM S A NEUTRON 377
QHEC29 CARABAR HEATHER C29 (AI) (ET)
COMFORT HILL HEATHER X89 (AI) (ET)



July 2015 Angus Australia BREEDPLAN

	CE	CE	GL	BW	200	400	600	MC	Milk	SS	DC	CWE	EMA	Rib	Rump	RBY	IMF
EBV	-0.1	+0.8	--	+6.3	+51	+89	+119	+117	+12	+2.0	-6.0	+65	+2.3	-1.3	-0.3	+0.1	+1.7
Acc	46%	41%		73%	66%	66%	72%	65%	49%	71%	42%	57%	57%	58%	59%	54%	52%
\$ INDEX VALUES				Angus Breeding: +\$117			Domestic: +\$107			Heavy Grain: +\$125			Heavy Grass: +\$113				

Wtkg Scrcm Rib/P8Fatmm/.....mm Dent EMAcm² IMF% DamCalvesYears

Comments: This moderate-framed bull has good growth and carcase figures. has some very strong female bloodlines.

Purchaser

Price \$

MOOROOBIE ANGUS

The Mooroobie Angus herd is located about 5 kms south-east of Goondiwindi on land adjoining the Macintyre River, some of which has been in the Ward Family since 1902. It is run by Lindsay Ward (a practising agronomist who was instrumental in the introduction of no-tillage into Australia in the 1970's) and his wife Helen. We irrigate with centre pivots to provide income diversity as well as feed grain and silage, if necessary, for our 220 cow stud herd, plus commercials.

Our first Angus stud cow was bought in 1995 from Boorahman in Victoria with a TeMania Kelp calf at foot. We were attracted to Kelp because of his low birth weight. In 1998 we bought two heifers from the Sydney Royal Show – one from Farrer (NFS R12 – a Paramount Ambush daughter) and one from Merribrook (S8) who was a Burthlene Patriot daughter. The Farrer cow has come to have had a significant influence on our herd with our top performing home bred cows (QBPC13, QBPC17, QBPZ23) all being derivatives. About six years ago we bought females at the Vermont dispersal and from Alpine.

More recently we bought many cows at the Forres dispersal, some at Millah Murrah and the Aberdeen Estates dispersal in 2013. Several of those cows have been flushed to bulls including Ardrossan Equator 019, TC Franklin, Bald Blair Debonair 034, Karoo Equator E39, Cluden Newry F10, Connealy KW 1664 Consensus and Silveiras Conversion 8064 and have produced very good progeny.

Animals are heavily selected on structure and 'doability'. Feet and udder shape are very important to us. Our focus is on a balance of maternal traits, fertility, growth and carcase. One of our home bred sires (QBPE27) is an Australian trait leader for 200, 400 and 600 day weights as well as being on the top 5% for carcase weight, eye muscle area and IMF.

Fertility is paramount. If a cow doesn't have a calf every 12 months, she is out! An increasing effort is placed on marbling and other carcase traits to improve meat quality for the consumer.

We are heavy users of AI and ET in an endeavour to use the best possible genetics to get the best possible outcomes. Last season we used nine different AI sires over nearly 200 cows. Dick Whale, a consultant, helps us match parents in an endeavour to produce an optimal outcome and improve the standard. After culling, until very recently, we sold all our bulls "in the paddock" mostly to repeat buyers. We are not 'followers' and to a significant extent use vastly different genetics to other Queensland breeders.

All our cattle are run on grass with bulls being prepared for sale as much as possible on forage crops with supplementation with a silage ration in 'dry spells' as necessary.

Cows are mated in late August each year to effect calving prior to the end of June to facilitate herd management. We are a Family enterprise with assistance being employed for some seasonal cattle work.

LINDSAY & HELEN WARD

Telephone 07 4671 1103 | 0428 350 380

Email mooroobie@bipgpond.com

Lot 27

MOOROOBIE JOVIAL J87

Reg HBR

ID QBPJ87

DOB 16/06/2013

VERMILION NEW DESIGN L805

SIRE CCVE482 VERMONT DUKE E482 (AI)

VERMONT LOWAN B261 (AI) (ET)

SITZ NEW DESIGN 458N

DAM QBPF21 MOOROOBIE TRIVA 458N F21 (AI)

MOOROOBIE TRIVA HIGHMARK C13 (AI)

July 2015 Angus Australia BREEDPLAN

	CE	CE	GL	BW	200	400	600	MC	Milk	SS	DC	CWE	EMA	Rib	Rump	RBY	IMF
EBV	-2.2	-1.5	-3.6	+6.0	+46	+82	+106	+93	+16	+1.7	-6.0	+60	+4.4	-0.1	+0.3	+0.2	+2.1
Acc	45%	38%	61%	73%	67%	68%	65%	59%	49%	69%	38%	56%	57%	58%	58%	53%	51%
\$ INDEX VALUES				Angus Breeding: +\$110				Domestic: +\$103				Heavy Grain: +\$118				Heavy Grass: +\$106	

Wtkg Scrcm Rib/P8Fatmm/.....mm Dent EMAcm² IMF% Dam 4 Calves 5 Years

Comments: A well-proportioned bull with well above average performance on nearly all counts including growth and IMF. High fertility is indicated by the four calves in five years. The grand dam has been a donor and is still contributing strongly to our herd.

Purchaser

Price \$

Lot 28**MOOROOBIE JOSEPH J22 (AI)****Reg** HBR**ID** QBPJ22**DOB** 28/05/2013

G A R ULTIMATE
SIRE VLYE398 LAWSONS NADAL E398 (AI)
 LAWSONS CONVERGENCE B887 (AI)

MOOROOBIE BARRY B23 (AI) (ET)
DAM QBPF38 MOOROOBIE F38
 MOOROOBIE WILCOOLA 931 B33 (AI) (ET)

**SIRE**

July 2015 Angus Australia BREEDPLAN

	CE	CE	GL	BW	200	400	600	MC	Milk	SS	DC	CWE	EMA	Rib	Rump	RBY	IMF
EBV	-4.0	-1.9	-0.5	+5.7	+53	+88	+111	+116	+5	+1.1	-4.9	+68	+5.5	-1.3	-1.8	+0.9	+1.6
Acc	50%	40%	83%	72%	68%	69%	66%	61%	53%	71%	38%	59%	59%	59%	60%	55%	55%
\$ INDEX VALUES			Angus Breeding: +\$103				Domestic: +\$103				Heavy Grain: +\$108			Heavy Grass: +\$101			

Wtkg Scrcm Rib/P8Fatmm/.....mm Dent EMAcm² IMF% Dam 4 Calves 5 Years

Comments: A bull with serious depth in the breeding giving a solid balance of sought-after traits for most breeders.

Purchaser

Price \$

Lot 29**MOOROOBIE JETSON J24 (AI)****Reg** HBR**ID** QBPJ24**DOB** 29/05/2013

BT CROSSOVER 758N
SIRE USA16262077 SILVEIRAS CONVERSION 8064
 EXG SARAS DREAM S609 R3

MOOROOBIE BARRY B23 (AI) (ET)
DAM QBPF52 MOOROOBIE YANA NEBRASKA F52
 MOOROOBIE YANA GARDENS HIGH M A45 (AI)

**SIRE**

July 2015 Angus Australia BREEDPLAN

	CE	CE	GL	BW	200	400	600	MC	Milk	SS	DC	CWE	EMA	Rib	Rump	RBY	IMF
EBV	-8.5	--	-1.2	+6.7	+56	+90	+122	+114	+10	+1.9	--	+71	+5.6	-0.1	+0.3	+0.2	+1.8
Acc	47%		84%	74%	68%	69%	66%	58%	44%	71%		55%	57%	58%	59%	52%	51%
\$ INDEX VALUES			Angus Breeding: +\$100				Domestic: +\$93				Heavy Grain: +\$102			Heavy Grass: +\$100			

Wtkg Scrcm Rib/P8Fatmm/.....mm Dent EMAcm² IMF% Dam 4 Calves 5 Years

Comments: An impressive bull with well-above breed average for all attributes. We have not had any poor performers from his sire, Silveiras Conversion 8064.

Purchaser

Price \$

Lot 30**MOOROOBIE JASPER J5 (ET)****Reg** HBR**ID** QBPJ5**DOB** 23/05/2013

TC TOTAL 410
SIRE USA15462648 TC FRANKLIN 619
 TC MARCIA 1069

BANQUET ABODE A005 (AI)
DAM NFJD64 FORRES BRAE D64
 YTHANBRAE NEW DESIGN 036 V18 (AI) (ET)

**DAM****SIRE**

July 2015 Angus Australia BREEDPLAN

	CE	CE	GL	BW	200	400	600	MC	Milk	SS	DC	CWE	EMA	Rib	Rump	RBY	IMF
EBV	+1.5	+1.7	-4.5	+2.7	+45	+83	+104	+94	+17	+0.7	-4.7	+53	+1.4	-1.2	+0.4	-0.7	+2.1
Acc	54%	45%	61%	73%	68%	69%	68%	64%	57%	71%	37%	60%	60%	61%	61%	56%	56%
\$ INDEX VALUES			Angus Breeding: +\$105				Domestic: +\$104				Heavy Grain: +\$108			Heavy Grass: +\$104			

Wtkg Scrcm Rib/P8Fatmm/.....mm Dent EMAcm² IMF% Dam 14 Calves 7 Years

Comments: An outstanding heifer bull (low birthweight) with above-average growth and IMF.

Purchaser

Price \$

Lot 31**MOOROOBIE JAVELIN J28 (AI)****Reg** HBR**ID** QBPJ28**DOB** 29/05/2013

ARDROSSAN EQUATOR A241 (AI) (ET)
SIRE NAQD19 ARDROSSAN EQUATOR D19 (AI)
 ARDROSSAN KATE Z36 (AI) (ET)

PRAIRIEDGE MARBULL DESIGN931
DAM QBPB35 MOOROOBIE WILCOOLA 931 B35 (AI) (ET)
 ARDROSSAN WILCOOLA S34 (AI)

**SIRE**

July 2015 Angus Australia BREEDPLAN																	
	CE	CE	GL	BW	200	400	600	MC	Milk	SS	DC	CWE	EMA	Rib	Rump	RBY	IMF
EBV	-1.1	-0.6	-2.5	+5.5	+54	+93	+122	+114	+15	+1.8	-3.3	+78	+5.9	-2.7	-3.2	+1.7	+0.7
Acc	54%	48%	84%	74%	70%	71%	68%	65%	60%	74%	44%	61%	61%	61%	62%	57%	56%
\$ INDEX VALUES			Angus Breeding: +\$106				Domestic: +\$107				Heavy Grain: +\$104				Heavy Grass: +\$108		

Wtkg Scrcm Rib/P8Fatmm/.....mm Dent EMAcm² IMF% Dam 8 Calves 9 Years

Comments: A bull with growth and carcase derived from both parents being a grandson of Ardrossan Equator A241, one of the most-used sires in Australia over the last several years and a cow derived from Prairiedge Marbull Design 931 and an Ardrossan cow who had added considerably over the years to our herd.

Purchaser Price \$

Lot 32**MOOROOBIE JAGUAR J36 (AI)****Reg** HBR**ID** QBPJ36**DOB** 30/05/2013

BT CROSSOVER 758N
SIRE USA16262077 SILVEIRAS CONVERSION 8064
 EXG SARAS DREAM S609 R3

GARDENS HIGHMARK
DAM QBPB17 MOOROOBIE WILCOOLA HIGHMARK B B17 (AI)
 ARDROSSAN WILCOOLA S34 (AI)

**SIRE**

July 2015 Angus Australia BREEDPLAN																	
	CE	CE	GL	BW	200	400	600	MC	Milk	SS	DC	CWE	EMA	Rib	Rump	RBY	IMF
EBV	-6.4	-2.0	-2.1	+6.4	+55	+90	+115	+101	+12	+2.3	-4.0	+74	+9.3	-1.2	-1.0	+1.1	+1.7
Acc	51%	40%	84%	74%	69%	70%	67%	60%	48%	73%	39%	57%	59%	59%	60%	54%	54%
\$ INDEX VALUES			Angus Breeding: +\$105				Domestic: +\$103				Heavy Grain: +\$107				Heavy Grass: +\$104		

Wtkg Scrcm Rib/P8Fatmm/.....mm Dent EMAcm² IMF% Dam 8 Calves 9 Years

Comments: Moderate birthweight, in the top 1% for 200 day weight, the top 5% for 400 day weight, the top 15% for scrotal, the top 5% for carcase weight, the top 1% for EMA and the top 5% for retail beef yield – has everything to offer your herd.

Purchaser Price \$

Lot 33**MOOROOBIE JOEL J12 (AI)****Reg** HBR**ID** QBPJ12**DOB** 25/05/2013

ARDROSSAN EQUATOR A241 (AI) (ET)
SIRE NAQD19 ARDROSSAN EQUATOR D19 (AI)
 ARDROSSAN KATE Z36 (AI) (ET)

GARDENS HIGHMARK
DAM QBPC17 MOOROOBIE EXPENSIVE HIGHMARK C17 (AI)
 MOOROOBIE EXPENSIVE FAMOUS Y24 (AI) (ET)

**SIRE****DAM**

July 2015 Angus Australia BREEDPLAN																	
	CE	CE	GL	BW	200	400	600	MC	Milk	SS	DC	CWE	EMA	Rib	Rump	RBY	IMF
EBV	+1.6	+1.1	-5.8	+4.7	+47	+80	+112	+108	+17	+3.3	-3.1	+70	+8.1	-2.1	-2.0	+2.2	+0.9
Acc	54%	48%	85%	75%	70%	71%	68%	65%	60%	73%	42%	61%	60%	60%	61%	56%	55%
\$ INDEX VALUES			Angus Breeding: +\$112				Domestic: +\$108				Heavy Grain: +\$112				Heavy Grass: +\$113		

Wtkg Scrcm Rib/P8Fatmm/.....mm Dent EMAcm² IMF% Dam 13 Calves 8 Years

Comments: A bull suitable for heifers with depth in all attributes –growth, scrotal, EMA, retail beef yield and IMF. D19, Gardens Highmark and Farrer Expensive R12 in the percentage means longevity and high fertility as well as carcase.

Purchaser Price \$

Lot 34**MOOROOKIE JAVELIN J21 (ET)****Reg** HBR**ID** QBPJ21**DOB** 28/05/2013

TC TOTAL 410
SIRE USA15462648 TC FRANKLIN 619
 TC MARCIA 1069

MILLAH MURRAH WOODY W100 (AI)
DAM NFJC71 FORRES IRIS C71 (AI) (ET)
 ST PAULS IRIS Y216 (AI) (ET)

**SIRE**

July 2015 Angus Australia BREEDPLAN

	CE	CE	GL	BW	200	400	600	MC	Milk	SS	DC	CWE	EMA	Rib	Rump	RBY	IMF
EBV	-3.0	+0.2	-2.1	+4.0	+44	+79	+100	+86	+15	+1.5	-4.2	+54	+5.1	-1.4	-0.1	+0.6	+1.6
Acc	55%	47%	60%	73%	69%	69%	68%	65%	58%	72%	40%	61%	61%	61%	62%	58%	57%
\$ INDEX VALUES			Angus Breeding: +\$99				Domestic: +\$100				Heavy Grain: +\$98			Heavy Grass: +\$99			

Wtkg Scrcm Rib/P8Fatmm/.....mm Dent EMAcm² IMF% Dam 8 Calves 8 Years

Comments: A bull suitable for heifers sired by TC Franklin 619 from a Forres cow bought several years ago who has been a donor for us. He would do any herd justice.

Purchaser

Price \$

Lot 35**MOOROOKIE JUSTIN J11 (AI)****Reg** HBR**ID** QBPJ11**DOB** 25/05/2013

ARDROSSAN EQUATOR A241 (AI) (ET)
SIRE NAQD19 ARDROSSAN EQUATOR D19 (AI)
 ARDROSSAN KATE Z36 (AI) (ET)

ROCKN D AMBUSH 1531
DAM NWPW42 WATTLETOP BARUNAH W42 (AI)
 WATTLETOP BARUNAH U95 (AI) (ET)

**DAM ▶****◀ SIRE**

July 2015 Angus Australia BREEDPLAN

	CE	CE	GL	BW	200	400	600	MC	Milk	SS	DC	CWE	EMA	Rib	Rump	RBY	IMF
EBV	+1.7	+2.7	-7.0	+4.4	+44	+78	+103	+112	+12	+3.3	-5.8	+64	+4.3	-1.0	-0.3	+0.9	+1.0
Acc	55%	49%	85%	75%	71%	71%	70%	67%	62%	74%	46%	62%	62%	62%	63%	58%	57%
\$ INDEX VALUES			Angus Breeding: +\$108				Domestic: +\$105				Heavy Grain: +\$108			Heavy Grass: +\$107			

Wtkg Scrcm Rib/P8Fatmm/.....mm Dent EMAcm² IMF% Dam 12 Calves 14 Years

Comments: A heifer bull whose mother produced 12 calves in her 14 years. He is above breed average on most traits. The photo of the mother shows her udder is still very serviceable after 12 calves.

Purchaser

Price \$

Lot 36**MOOROOKIE JORDAN J25 (AI)****Reg** HBR**ID** QBPJ25**DOB** 29/05/2013

TC TOTAL 410
SIRE USA15462648 TC FRANKLIN 619
 TC MARCIA 1069

MOOROOKIE BARRY B23 (AI) (ET)
DAM QBPF39 MOOROOKIE DANDLOO NEBRASKA F39
 MOOROOKIE DANDLOO MIDLAND Z16 (AI) (ET)

**SIRE**

July 2015 Angus Australia BREEDPLAN

	CE	CE	GL	BW	200	400	600	MC	Milk	SS	DC	CWE	EMA	Rib	Rump	RBY	IMF
EBV	-1.6	+1.5	-1.7	+4.4	+50	+84	+108	+107	+9	+1.0	-5.0	+59	+1.6	-1.9	+0.0	-0.5	+1.9
Acc	54%	45%	84%	74%	69%	70%	67%	64%	58%	72%	37%	60%	60%	61%	61%	57%	55%
\$ INDEX VALUES			Angus Breeding: +\$102				Domestic: +\$100				Heavy Grain: +\$104			Heavy Grass: +\$100			

Wtkg Scrcm Rib/P8Fatmm/.....mm Dent EMAcm² IMF% Dam 4 Calves 5 Years

Comments: A heifer bull with reliable Breedplan figures above breed average.

Purchaser

Price \$

Lot 37**MOOROOKIE JINGLE J60****Reg** HBR**ID** QBPJ60**DOB** 05/06/2013

VERMILION NEW DESIGN L805

SIRE CCVE482 VERMONT DUKE E482 (AI)
VERMONT LOWAN B261 (AI) (ET)

MOOROOKIE BARRY B23 (AI) (ET)

DAM QBPE51 MOOROOKIE EXPENSIVE NEBRASKA E E51
MOOROOKIE EXPENSIVE 036 A15 (AI) (ET)

July 2015 Angus Australia BREEDPLAN

	CE	CE	GL	BW	200	400	600	MC	Milk	SS	DC	CWE	EMA	Rib	Rump	RBY	IMF
EBV	-2.9	+0.3	+0.0	+5.9	+42	+69	+94	+96	+11	+1.8	-4.2	+55	+6.4	-2.0	-3.1	+2.0	+1.4
Acc	43%	35%	55%	73%	67%	68%	65%	59%	48%	69%	36%	56%	54%	54%	56%	50%	48%
\$ INDEX VALUES			Angus Breeding: +\$94				Domestic: +\$95				Heavy Grain: +\$98			Heavy Grass: +\$92			

Wtkg Scrcm Rib/P8Fatmm/.....mm Dent EMAcm² IMF% Dam 4 Calves 6 Years**Comments:** An impressive bull with favourable carcase attributes. He would do any herd justice.

Purchaser

Price \$

Lot 38**MOOROOKIE JAMBOREE J66****Reg** HBR**ID** QBPJ66**DOB** 06/06/2013

VERMILION NEW DESIGN L805

SIRE CCVE482 VERMONT DUKE E482 (AI)
VERMONT LOWAN B261 (AI) (ET)

MOOROOKIE ALEXANDER A1

DAM QBPC51 MOOROOKIE DANDLOO FUTURE DIR C51
MOOROOKIE DANDLOO MIDLAND Z13 (AI) (ET)

July 2015 Angus Australia BREEDPLAN

	CE	CE	GL	BW	200	400	600	MC	Milk	SS	DC	CWE	EMA	Rib	Rump	RBY	IMF
EBV	-1.7	--	-2.8	+5.6	+41	+70	+89	+78	+12	+1.9	--	+55	+6.3	-0.1	+0.1	+0.7	+1.6
Acc	42%		58%	73%	67%	68%	65%	58%	50%	68%		55%	54%	54%	55%	50%	48%
\$ INDEX VALUES			Angus Breeding: +\$97				Domestic: +\$98				Heavy Grain: +\$97			Heavy Grass: +\$96			

Wtkg Scrcm Rib/P8Fatmm/.....mm Dent EMAcm² IMF% Dam 7 Calves 8 Years**Comments:** A bull with longevity on his side – his mother has produced seven calves in her eight years. Nothing brings more profit than longevity.

Purchaser

Price \$

Lot 39**MOOROOKIE JAHANNES J155****Reg** HBR**ID** QBPJ155**DOB** 22/07/2013

TC FRANKLIN 619

SIRE NWPG122 WATTLETOP FRANKLIN G122 (AI)
WATTLETOP LUCY A296 (AI) (ET)

SITZ NEW DESIGN 458N

DAM QBPG6 MOOROOKIE DANDLOO 458N G6 (AI)
MOOROOKIE DANDLOO 395M E9 (AI)

July 2015 Angus Australia BREEDPLAN

	CE	CE	GL	BW	200	400	600	MC	Milk	SS	DC	CWE	EMA	Rib	Rump	RBY	IMF
EBV	-2.2	+0.6	-4.2	+5.1	+48	+83	+112	+107	+14	+2.8	-6.0	+60	+2.7	-1.2	-0.3	+0.5	+1.9
Acc	43%	37%	60%	70%	64%	65%	61%	57%	46%	68%	37%	54%	54%	55%	56%	51%	49%
\$ INDEX VALUES			Angus Breeding: +\$113				Domestic: +\$104				Heavy Grain: +\$121			Heavy Grass: +\$108			

Wtkg Scrcm Rib/P8Fatmm/.....mm Dent EMAcm² IMF% Dam 2 Calves 4 Years**Comments:** A Franklin son with growth and respectable carcase who could be used successfully on heifers.

Purchaser

Price \$

Lot 40**MOOROOBIE JUDO J151****Reg** HBR**ID** QBPJ151**DOB** 18/07/2013

B/R 65R GENESIS

SIRE QBPE27 MOOROOBIE EDGEROI E27 (AI)
MOOROOBIE WILCOOLA 095 B32 (AI) (ET)

ROCKN D AMBUSH 1531

DAM QBPA25 MOOROOBIE YANA ROCKN D A25 (AI) (ET)
YTHANBRAE NEW DESIGN 036 V19 (AI) (ET)

July 2015 Angus Australia BREEDPLAN

	CE	CE	GL	BW	200	400	600	MC	Milk	SS	DC	CWE	EMA	Rib	Rump	RBV	IMF
EBV	-5.7	-0.2	+1.1	+7.2	+49	+78	+108	+113	+11	+0.6	-3.0	+66	+7.4	-4.3	-5.4	+2.9	+1.2
Acc	48%	42%	57%	73%	68%	69%	67%	61%	55%	71%	43%	58%	57%	57%	59%	54%	52%
\$ INDEX VALUES			Angus Breeding: +\$94				Domestic: +\$94				Heavy Grain: +\$100			Heavy Grass: +\$92			

Wtkg Scrcm Rib/P8Fatmm/.....mm Dent EMAcm² IMF% Dam 7 Calves 10 Years**Comments:** Sired by our own trait leader, QBPE27 who was in the top one percent of the breed for most traits prior to his death. His dam produced seven calves in her 10 years prior to being culled. This bull has frame.

Purchaser

Price \$

CARABAR ANGUS

(CONTINUED)

Lot 41**CARABAR REGENT K2 (AI) (ET)****Reg** HBR**ID** QHEK2**DOB** 01/02/2014

TE MANIA AMBASSADOR A134 (AI)

SIRE BNAD145 TUWHARETOA REGENT D145 (AI) (ET)
LAWSON'S HENRY VIII Y5 (AI)

TE MANIA YORKSHIRE Y437 (AI)

DAM QHED6 CARABAR BLACKCAP MARY D6 (AI) (ET)
BOOROOMOOKA TRACY T4 (AI) (ET)**SIRE** ►◄ **DAM**

July 2015 Angus Australia BREEDPLAN

	CE	CE	GL	BW	200	400	600	MC	Milk	SS	DC	CWE	EMA	Rib	Rump	RBV	IMF
EBV	-1.2	-1.4	-3.6	+5.4	+52	+97	+130	+120	+16	+1.9	-4.3	+84	+5.0	+0.2	+0.0	-1.2	+3.3
Acc	60%	55%	61%	75%	70%	71%	70%	67%	60%	74%	49%	64%	64%	64%	65%	62%	61%
\$ INDEX VALUES			Angus Breeding: +\$127				Domestic: +\$109				Heavy Grain: +\$146			Heavy Grass: +\$119			

Wtkg Scrcm Rib/P8Fatmm/.....mm Dent EMAcm² IMF% DamCalvesYears**Comments:** Another Regent D145 son. A solid, thickset type with a moderate frame. The usual Regent high growth and carcase figures and very high marbling. Positive fat cover.

Purchaser

Price \$

Lot 42**CARABAR REGENT K7 (AI) (ET)**

Reg HBR

ID QHEK7

DOB 01/02/2014

TE MANIA AMBASSADOR A134 (AI)
SIRE BNAD145 TUWHARETOA REGENT D145 (AI) (ET)
 LAWSONS HENRY VIII Y5 (AI)

TE MANIA YORKSHIRE Y437 (AI)
DAM QHED6 CARABAR BLACKCAP MARY D6 (AI) (ET)
 BOOROOMOOKA TRACY T4 (AI) (ET)



SIRE ►



◄ DAM

July 2015 Angus Australia BREEDPLAN																	
	CE	CE	GL	BW	200	400	600	MC	Milk	SS	DC	CWE	EMA	Rib	Rump	RBY	IMF
EBV	-2.0	-1.8	-3.4	+5.9	+54	+101	+136	+125	+16	+2.6	-4.7	+86	+4.6	+0.1	+0.2	-1.1	+3.3
Acc	60%	55%	61%	75%	70%	71%	70%	67%	60%	74%	49%	64%	64%	64%	65%	62%	61%
\$ INDEX VALUES			Angus Breeding: +\$132				Domestic: +\$111				Heavy Grain: +\$153				Heavy Grass: +\$123		

Wtkg Scrcm Rib/P8Fatmm/.....mm Dent EMAcm² IMF% DamCalvesYears

Comments: A top-class bull. These Regent XD6 progeny are standouts. A flush brother to J77, J89 and K2 ... the same very high marbling and growth figures.

Purchaser Price \$

Lot 43**CARABAR 1407 K9 (AI) (ET)**

Reg HBR

ID QHEK9

DOB 01/02/2014

B/R NEW DESIGN 036
SIRE USA1407 BON VIEW NEW DESIGN 1407
 BON VIEW PRIDE 664

TE MANIA YORKSHIRE Y437 (AI)
DAM QHED6 CARABAR BLACKCAP MARY D6 (AI) (ET)
 BOOROOMOOKA TRACY T4 (AI) (ET)



DAM

July 2015 Angus Australia BREEDPLAN																	
	CE	CE	GL	BW	200	400	600	MC	Milk	SS	DC	CWE	EMA	Rib	Rump	RBY	IMF
EBV	+3.4	+2.5	-4.0	+4.1	+51	+95	+130	+104	+17	+2.7	-6.2	+64	+4.5	-0.3	+0.0	+0.2	+2.5
Acc	61%	58%	61%	75%	70%	71%	70%	67%	61%	74%	58%	65%	65%	66%	67%	64%	63%
\$ INDEX VALUES			Angus Breeding: +\$147				Domestic: +\$125				Heavy Grain: +\$164				Heavy Grass: +\$138		

Wtkg Scrcm Rib/P8Fatmm/.....mm Dent EMAcm² IMF% DamCalvesYears

Comments: A very good bull with body depth and thickness. Low birthweight. Tremendous growth and carcass figures. Very high marbling. Suitable for heifers.

Purchaser Price \$

Lot 44**CARABAR GABBA K12 (AI) (ET)**

Reg HBR

ID QHEK12

DOB 02/02/2014

TUWHARETOA REGENT D145 (AI) (ET)
SIRE BHRG548 DUNOON GABBA G548 (AI) (ET)
 DUNOON BEEAC Z120

G A R PREDESTINED
DAM QHEA46 CARABAR BLACK CAP MARY A46 (MBR) (AI) (ET)
 BOOROOMOOKA TRACY T4 (AI) (ET)



July 2015 Angus Australia BREEDPLAN																	
	CE	CE	GL	BW	200	400	600	MC	Milk	SS	DC	CWE	EMA	Rib	Rump	RBY	IMF
EBV	-3.8	-2.1	-2.0	+6.4	+48	+87	+115	+97	+16	+2.8	-5.0	+68	+3.7	+1.8	+2.9	-2.0	+3.6
Acc	52%	43%	63%	75%	70%	71%	67%	62%	52%	73%	42%	60%	60%	60%	61%	56%	55%
\$ INDEX VALUES			Angus Breeding: +\$115				Domestic: +\$99				Heavy Grain: +\$130				Heavy Grass: +\$108		

Wtkg Scrcm Rib/P8Fatmm/.....mm Dent EMAcm² IMF% DamCalvesYears

Comments: An easy-doing, thickset bull with a moderate frame. Good growth and carcass and very high marbling. Positive fat cover.

Purchaser Price \$

Lot 45**CARABAR REGENT K13 (AI) (ET)**

Reg HBR

ID QHEK13

DOB 02/02/2014

TE MANIA AMBASSADOR A134 (AI)
SIRE BNAD145 TUWHARETOA REGENT D145 (AI) (ET)
 LAWSONS HENRY VIII Y5 (AI)

BON VIEW NEW DESIGN 1407
DAM QHEB12 CARABAR BLACKCAP MARY B12 (AI) (ET)
 BOOROOMOOKA TRACY T4 (AI) (ET)



SIRE ►



◄ DAM

July 2015 Angus Australia BREEDPLAN

	CE	CE	GL	BW	200	400	600	MC	Milk	SS	DC	CWE	EMA	Rib	Rump	RBY	IMF
EBV	-1.1	-3.1	-4.1	+5.3	+49	+91	+127	+110	+18	+2.3	-4.2	+76	+4.4	+0.0	-0.3	-0.7	+3.1
Acc	62%	56%	64%	76%	71%	72%	71%	68%	63%	75%	50%	66%	65%	66%	67%	63%	63%
\$ INDEX VALUES				Angus Breeding: +\$124				Domestic: +\$105				Heavy Grain: +\$142				Heavy Grass: +\$116	

Wtkg Scrcm Rib/P8Fatmm/.....mm Dent EMAcm² IMF% DamCalvesYears

Comments: A moderate-framed bull with good body length and depth. Again with the Regent high growth, carcase and very high marbling.

Purchaser Price \$

Lot 46**CARABAR GABBA K15 (AI) (ET)**

Reg HBR

ID QHEK15

DOB 02/02/2014

TUWHARETOA REGENT D145 (AI) (ET)
SIRE BHRG548 DUNOON GABBA G548 (AI) (ET)
 DUNOON BEEAC Z120

BON VIEW NEW DESIGN 1407
DAM QHEB12 CARABAR BLACKCAP MARY B12 (AI) (ET)
 BOOROOMOOKA TRACY T4 (AI) (ET)



DAM

July 2015 Angus Australia BREEDPLAN

	CE	CE	GL	BW	200	400	600	MC	Milk	SS	DC	CWE	EMA	Rib	Rump	RBY	IMF
EBV	+0.1	-0.7	-4.7	+5.1	+48	+88	+120	+102	+18	+2.7	-4.2	+70	+3.7	+0.5	+0.8	-1.0	+2.9
Acc	54%	45%	64%	76%	71%	72%	68%	63%	53%	74%	43%	61%	61%	62%	63%	58%	57%
\$ INDEX VALUES				Angus Breeding: +\$120				Domestic: +\$105				Heavy Grain: +\$133				Heavy Grass: +\$114	

Wtkg Scrcm Rib/P8Fatmm/.....mm Dent EMAcm² IMF% DamCalvesYears

Comments: Solid type of bull with a moderate frame. Medium birthweight. Good growth and carcase. Very high marbling. Positive fat cover.

Purchaser Price \$

Lot 47**CARABAR 1407 K17 (AI) (ET)**

Reg HBR

ID QHEK17

DOB 02/02/2014

B/R NEW DESIGN 036
SIRE USA1407 BON VIEW NEW DESIGN 1407
 BON VIEW PRIDE 664

TE MANIA YORKSHIRE Y437 (AI)
DAM QHED6 CARABAR BLACKCAP MARY D6 (AI) (ET)
 BOOROOMOOKA TRACY T4 (AI) (ET)



DAM

July 2015 Angus Australia BREEDPLAN

	CE	CE	GL	BW	200	400	600	MC	Milk	SS	DC	CWE	EMA	Rib	Rump	RBY	IMF
EBV	+3.8	+2.7	-4.1	+3.6	+47	+86	+118	+95	+16	+1.3	-5.3	+58	+3.8	-0.3	-0.3	+0.0	+2.6
Acc	61%	58%	61%	75%	70%	71%	70%	67%	61%	74%	58%	65%	65%	66%	67%	64%	63%
\$ INDEX VALUES				Angus Breeding: +\$133				Domestic: +\$117				Heavy Grain: +\$148				Heavy Grass: +\$126	

Wtkg Scrcm Rib/P8Fatmm/.....mm Dent EMAcm² IMF% DamCalvesYears

Comments: Stylish young bull with good length and frame. Flush brother to K9 and K24. Low birthweight with growth and carcase. high marbling. Suitable for heifers.

Purchaser Price \$

Lot 48**CARABAR BERKLEY K18 (AI) (ET)**

Reg HBR

ID QHEK18

DOB 02/02/2014

TE MANIA YORKSHIRE Y437 (AI)
SIRE VTMB1 TE MANIA BERKLEY B1 (AI)
 TE MANIA LOWAN Z53 (AI) (ET)

C A FUTURE DIRECTION 5321
DAM QHEZ24 CARABAR HEATHER Z24 (AI) (ET)
 COMFORT HILL HEATHER X27 (AI)



July 2015 Angus Australia BREEDPLAN

	CE	CE	GL	BW	200	400	600	MC	Milk	SS	DC	CWE	EMA	Rib	Rump	RBY	IMF
EBV	+3.5	+3.2	-5.2	+3.3	+46	+79	+106	+103	+13	+1.5	-7.0	+65	+7.0	+0.3	+0.2	+0.1	+2.2
Acc	62%	57%	63%	76%	72%	73%	72%	68%	64%	76%	55%	67%	67%	67%	68%	65%	64%
\$ INDEX VALUES			Angus Breeding: +\$127				Domestic: +\$113				Heavy Grain: +\$137			Heavy Grass: +\$121			

Wtkg Scrcm Rib/P8Fatmm/.....mm Dent EMAcm² IMF% DamCalvesYears

Comments: A good, soft-skinned, easy-doing type with a moderate frame, low birthweight, high eye muscle and marbling. Suitable for heifers. Positive fat cover.

Purchaser Price \$

Lot 49**CARABAR 1407 K24 (AI) (ET)**

Reg HBR

ID QHEK24

DOB 03/02/2014

B/R NEW DESIGN 036
SIRE USA1407 BON VIEW NEW DESIGN 1407
 BON VIEW PRIDE 664

TE MANIA YORKSHIRE Y437 (AI)
DAM QHED6 CARABAR BLACKCAP MARY D6 (AI) (ET)
 BOOROOMOOKA TRACY T4 (AI) (ET)



July 2015 Angus Australia BREEDPLAN

	CE	CE	GL	BW	200	400	600	MC	Milk	SS	DC	CWE	EMA	Rib	Rump	RBY	IMF
EBV	+3.5	+2.5	-4.0	+3.9	+51	+94	+128	+102	+16	+2.0	-5.6	+64	+5.1	-0.4	-0.3	+0.2	+2.6
Acc	61%	58%	61%	75%	70%	71%	70%	67%	61%	74%	58%	65%	65%	66%	67%	64%	63%
\$ INDEX VALUES			Angus Breeding: +\$145				Domestic: +\$125				Heavy Grain: +\$162			Heavy Grass: +\$136			

Wtkg Scrcm Rib/P8Fatmm/.....mm Dent EMAcm² IMF% DamCalvesYears

Comments: Top class bull. Flush brother to K9 and K17, possibly the best of the three. Outstanding Dollar Index figures. Low birthweight, high growth, carcase and marbling. Suitable for heifers.

Purchaser Price \$

Lot 50**CARABAR REGENT K26 (AI) (ET)**

Reg HBR

ID QHEK26

DOB 03/02/2014

TE MANIA AMBASSADOR A134 (AI)
SIRE BNAD145 TUWHARETOA REGENT D145 (AI) (ET)
 LAWSONS HENRY VIII Y5 (AI)

BON VIEW NEW DESIGN 1407
DAM QHEB12 CARABAR BLACKCAP MARY B12 (AI) (ET)
 BOOROOMOOKA TRACY T4 (AI) (ET)



July 2015 Angus Australia BREEDPLAN

	CE	CE	GL	BW	200	400	600	MC	Milk	SS	DC	CWE	EMA	Rib	Rump	RBY	IMF
EBV	-0.5	-2.8	-4.4	+5.2	+51	+96	+130	+111	+19	+1.8	-4.0	+78	+4.0	+0.3	+0.0	-0.9	+3.1
Acc	62%	56%	64%	76%	71%	72%	71%	68%	63%	75%	50%	66%	65%	66%	67%	63%	63%
\$ INDEX VALUES			Angus Breeding: +\$126				Domestic: +\$109				Heavy Grain: +\$143			Heavy Grass: +\$119			

Wtkg Scrcm Rib/P8Fatmm/.....mm Dent EMAcm² IMF% DamCalvesYears

Comments: A larger-framed Regent son with extra body length, the same moderate birthweight, his growth, carcase and very high marbling. Positive fat cover.

Purchaser Price \$

Lot 51**CARABAR BANDIT K31****Reg** HBR **ID** QHEK31 **DOB** 04/02/2014

BON VIEW NEW DESIGN 1407
SIRE QHEB49 CARABAR BANDIT 1407 B49 (AI) (ET)
 CARABAR HEATHER Z24 (AI) (ET)

TE MANIA BETTER BEEF B177 (AI) (ET)
DAM QHEE46 CARABAR GRACEE46
 YTHANBRAE NEW DESIGN 036 V1037 (AI) (ET)



July 2015 Angus Australia BREEDPLAN																	
	CE	CE	GL	BW	200	400	600	MC	Milk	SS	DC	CWE	EMA	Rib	Rump	RBY	IMF
EBV	-1.3	-0.3	-1.9	+5.0	+45	+81	+111	+92	+16	+1.8	-3.9	+65	+9.5	-1.6	-2.5	+1.7	+2.1
Acc	47%	41%	54%	72%	66%	67%	67%	62%	50%	71%	41%	58%	59%	59%	60%	56%	54%
\$ INDEX VALUES			Angus Breeding: +\$121				Domestic: +\$110				Heavy Grain: +\$132				Heavy Grass: +\$115		

Wtkg Scrcm Rib/P8Fatmm/.....mm Dent EMAcm² IMF% DamCalvesYears

Comments: Great style of young bull with length and thickness, good growth and carcase. Very high eye muscle and high marbling.

Purchaser Price \$

Lot 52**CARABAR BODINE K35****Reg** HBR **ID** QHEK35 **DOB** 04/02/2014

BON VIEW NEW DESIGN 1407
SIRE QHEB16 CARABAR BODINE 1407 B16 (AI) (ET)
 BOOROOMOOKA TRACY T4 (AI) (ET)

CARABAR GOLDEN STONE C2 (AI) (ET)
DAM QHEG95 CARABAR BLACKCAPMARY G95 (AI)
 CARABAR BLACKCAP MARY D9 (AI) (ET)

July 2015 Angus Australia BREEDPLAN																	
	CE	CE	GL	BW	200	400	600	MC	Milk	SS	DC	CWE	EMA	Rib	Rump	RBY	IMF
EBV	+1.9	+0.8	-5.3	+4.5	+42	+78	+100	+81	+16	+2.4	-4.9	+50	+5.3	+0.6	+1.5	+0.1	+1.9
Acc	45%	39%	58%	69%	64%	66%	65%	60%	47%	70%	40%	56%	57%	58%	59%	54%	52%
\$ INDEX VALUES			Angus Breeding: +\$114				Domestic: +\$109				Heavy Grain: +\$116				Heavy Grass: +\$112		

Wtkg Scrcm Rib/P8Fatmm/.....mm Dent EMAcm² IMF% DamCalvesYears

Comments: Good type of thickset bull with a moderate frame, average birthweight with growth and high marbling.

Purchaser Price \$

Lot 53**CARABAR KNOCKOUT K37****Reg** HBR **ID** QHEK37 **DOB** 05/02/2014

SITZ NEW DESIGN 458N
SIRE NZCG152 KO PREMIER BULL DURHAM G152 (ET)
 VERMONT DREAM Y301 (AI) (ET)

CARABAR BANDIT 1407 B49 (AI) (ET)
DAM QHEG89 CARABAR BLACKCAP MARY G89
 CARABAR BLACKCAP MARY D6 (AI) (ET)

**GRAND DAM**

July 2015 Angus Australia BREEDPLAN																	
	CE	CE	GL	BW	200	400	600	MC	Milk	SS	DC	CWE	EMA	Rib	Rump	RBY	IMF
EBV	+1.7	+1.4	--	+4.6	+47	+90	+124	--	+18	+2.2	-3.4	+63	+4.4	-1.5	-1.6	+1.2	+1.8
Acc	43%	38%		65%	59%	62%	59%		43%	67%	38%	52%	53%	52%	54%	49%	47%
\$ INDEX VALUES			Angus Breeding: +\$127				Domestic: +\$115				Heavy Grain: +\$137				Heavy Grass: +\$122		

Wtkg Scrcm Rib/P8Fatmm/.....mm Dent EMAcm² IMF% DamCalvesYears

Comments: A medium-framed, thickset bull. Moderate birthweight. Very good growth and carcase figures.

Purchaser Price \$

Lot 54**CARABAR BERKLEY K39 (AI) (ET)**

Reg HBR

ID QHEK39

DOB 05/02/2014

TE MANIA YORKSHIRE Y437 (AI)
SIRE VTMB1 TE MANIA BERKLEY B1 (AI)
 TE MANIA LOWAN Z53 (AI) (ET)

G A R PREDESTINED
DAM QHEA49 CARABAR BLACKCAP MARY A49 (AI) (ET)
 BOOROOMOOKA TRACY T4 (AI) (ET)



July 2015 Angus Australia BREEDPLAN

	CE	CE	GL	BW	200	400	600	MC	Milk	SS	DC	CWE	EMA	Rib	Rump	RBY	IMF
EBV	+3.5	+4.2	-6.1	+4.0	+44	+79	+102	+103	+13	+1.4	-7.4	+57	+4.3	+0.4	+1.5	-0.9	+3.2
Acc	60%	55%	62%	75%	70%	71%	69%	67%	62%	74%	55%	65%	65%	65%	66%	63%	62%
\$ INDEX VALUES			Angus Breeding: +\$130				Domestic: +\$114				Heavy Grain: +\$147			Heavy Grass: +\$119			

Wtkg Scrcm Rib/P8Fatmm/.....mm Dent EMAcm² IMF% DamCalvesYears

Comments: A deep-bodied, lengthy bull with a moderate frame, low birthweight and very high marbling. Postive fat cover. Suitable for heifers.

Purchaser

Price \$

Lot 55**CARABAR REGENT K41 (ET)**

Reg HBR

ID QHEK41

DOB 05/02/2014

TE MANIA AMBASSADOR A134 (AI)
SIRE BNAD145 TUWHARETOA REGENT D145 (AI) (ET)
 LAWSONS HENRY VIII Y5 (AI)

BON VIEW NEW DESIGN 1407
DAM QHEB12 CARABAR BLACKCAP MARY B12 (AI) (ET)
 BOOROOMOOKA TRACY T4 (AI) (ET)



July 2015 Angus Australia BREEDPLAN

	CE	CE	GL	BW	200	400	600	MC	Milk	SS	DC	CWE	EMA	Rib	Rump	RBY	IMF
EBV	-0.2	-2.6	-4.5	+4.7	+48	+90	+124	+106	+19	+2.0	-4.5	+74	+3.4	+0.7	+0.5	-0.9	+2.9
Acc	62%	56%	64%	76%	71%	72%	71%	68%	63%	75%	50%	66%	65%	66%	67%	63%	63%
\$ INDEX VALUES			Angus Breeding: +\$122				Domestic: +\$105				Heavy Grain: +\$137			Heavy Grass: +\$116			

Wtkg Scrcm Rib/P8Fatmm/.....mm Dent EMAcm² IMF% DamCalvesYears

Comments: The last of 10 Regent D145 sons. Larger-framed, moderate birthweight, good growth and carcass, high marbling. Positive fat cover.

Purchaser

Price \$

MOOROOBIE

(CONTINUED)

Lot 56**MOOROOBIE JUNGLE J94 (APR)****Reg** APR**ID** QBPJ94**DOB** 19/06/2013

VERMILION NEW DESIGN L805
SIRE CCVE482 VERMONT DUKE E482 (AI)
 VERMONT LOWAN B261 (AI) (ET)

ARDROSSAN DIRECTION X3 (AI) (ET)
DAM VLYB1232 LAWSONS DIRECTION X3 B1232 (APR) (AI)
 LAWSONS GRIDMAKER Y1574 (APR) (AI)



July 2015 Angus Australia BREEDPLAN

	CE	CE	GL	BW	200	400	600	MC	Milk	SS	DC	CWE	EMA	Rib	Rump	RBY	IMF
EBV	-2.4	+1.2	-5.1	+6.1	+40	+71	+92	+78	+13	+1.8	-4.3	+53	+5.9	-1.4	-1.0	+1.7	+1.3
Acc	45%	38%	62%	73%	67%	66%	65%	61%	50%	64%	38%	56%	54%	55%	55%	51%	50%
\$ INDEX VALUES			Angus Breeding: +\$98				Domestic: +\$100				HeavyGrain: +\$98			HeavyGrass: +\$98			

Wtkg Scrcm Rib/P8Fatmm/.....mm Dent EMAcm² IMF% Dam 5 Calves 8 Years

Comments: A balanced bull from one of two Lawson cows still in our herd.

Purchaser

Price \$

Lot 57**MOOROOBIE JIGSAW J96****Reg** HBR**ID** QBPJ96**DOB** 20/06/2013

ARDROSSAN CASINO C18 (AI) (ET)
SIRE QBPF69 MOOROOBIE FIDDESTICKS F69 (AI)
 ALPINE DAWN D30

B T ULTRAVOX 297E
DAM QBPA37 MOOROOBIE DANDALOO ULTRAVOX A3 A37 (AI) (ET)
 MOOROOBIE DANDLOO S3 (AI) (ET)

July 2015 Angus Australia BREEDPLAN

	CE	CE	GL	BW	200	400	600	MC	Milk	SS	DC	CWE	EMA	Rib	Rump	RBY	IMF
EBV	-4.2	-2.6	--	+6.0	+46	+80	+108	+97	+11	+1.4	-1.9	+59	+3.5	-1.2	-1.4	+0.8	+1.4
Acc	45%	38%		72%	66%	67%	64%	59%	50%	69%	39%	56%	55%	55%	57%	52%	49%
\$ INDEX VALUES			Angus Breeding: +\$88				Domestic: +\$90				HeavyGrain: +\$87			HeavyGrass: +\$91			

Wtkg Scrcm Rib/P8Fatmm/.....mm Dent EMAcm² IMF% Dam 8 Calves 9 Years

Comments: An impressive bull sired by a son of Ardrossan Casino. His dam has had eight calves in her nine years.

Purchaser

Price \$

Lot 58**MOOROOBIE JEDDA J58 (AI)****Reg** HBR**ID** QBPJ58**DOB** 04/06/2013

TC TOTAL 410
SIRE USA15462648 TC FRANKLIN 619
 TC MARCIA 1069

B/R NEW DIMENSION 7127
DAM QBPC46 MOOROOBIE CHAMPAGNE 7127 C46 (AI) (ET)
 MERRIBROOK CHAMPAGNE S8 (AI) (ET)

**DAM** ▶◀ **SIRE**

July 2015 Angus Australia BREEDPLAN

	CE	CE	GL	BW	200	400	600	MC	Milk	SS	DC	CWE	EMA	Rib	Rump	RBY	IMF
EBV	-6.8	-5.5	+0.8	+5.2	+44	+77	+98	+87	+14	+1.9	-4.6	+53	+5.9	-1.5	-0.5	+0.8	+1.8
Acc	57%	49%	84%	75%	70%	71%	68%	65%	60%	74%	42%	62%	61%	61%	62%	57%	57%
\$ INDEX VALUES			Angus Breeding: +\$89				Domestic: +\$90				HeavyGrain: +\$90			HeavyGrass: +\$88			

Wtkg Scrcm Rib/P8Fatmm/.....mm Dent EMAcm² IMF% Dam 7 Calves 8 Years

Comments: The sire and dam have brought good carcase traits to this bull, coupled with longevity/fertility.

Purchaser

Price \$

Lot 59**MOOROOBIE JOPLIN J92****Reg** HBR**ID** QBPJ92**DOB** 18/06/2013

B/R 65R GENESIS

SIRE QBPE27 MOOROOBIE EDGEROI E27 (AI)
MOOROOBIE WILCOOLA 095 B32 (AI) (ET)

B/R NEW DESIGN 036

DAM QBPC35 MOOROOBIE EXPENSIVE 036 C C35 (AI) (ET)
FARRER EXPENSIVE R12 (AI)

July 2015 Angus Australia BREEDPLAN

	CE	CE	GL	BW	200	400	600	MC	Milk	SS	DC	CWE	EMA	Rib	Rump	RBY	IMF
EBV	-5.3	-0.7	+2.6	+6.9	+43	+76	+104	+101	+16	-0.1	-2.1	+61	+4.5	-3.8	-4.7	+1.4	+2.0
Acc	48%	43%	60%	74%	69%	69%	67%	61%	55%	71%	42%	59%	58%	57%	57%	53%	52%
\$ INDEX VALUES			Angus Breeding: +\$86				Domestic: +\$87				Heavy Grain: +\$95			Heavy Grass: +\$83			

Wtkg Scrcm Rib/P8Fatmm/.....mm Dent EMAcm² IMF% Dam 7 Calves 8 Years**Comments:** A son of our own trait leader Mooroobie Edgeroi E27 from a high-producing cow who has had seven calves in the last eight years.

Purchaser Price \$

Lot 60**MOOROOBIE JAMAICA J171****Reg** HBR**ID** QBPJ171**DOB** 02/08/2013

B/R 65R GENESIS

SIRE QBPE27 MOOROOBIE EDGEROI E27 (AI)
MOOROOBIE WILCOOLA 095 B32 (AI) (ET)

MOOROOBIE BARRY B23 (AI) (ET)

DAM QBPF79 MOOROOBIE DANDLOO NEBRASKA F79
MOOROOBIE DANDLOO FUTURE DIR C59

July 2015 Angus Australia BREEDPLAN

	CE	CE	GL	BW	200	400	600	MC	Milk	SS	DC	CWE	EMA	Rib	Rump	RBY	IMF
EBV	-11.2	-5.4	+4.9	+8.2	+49	+81	+110	+110	+13	+0.7	-2.8	+66	+3.2	-2.2	-2.2	+0.5	+1.7
Acc	43%	35%	53%	72%	64%	65%	63%	58%	49%	63%	35%	54%	52%	54%	54%	50%	48%
\$ INDEX VALUES			Angus Breeding: +\$70				Domestic: +\$72				Heavy Grain: +\$71			Heavy Grass: +\$71			

Wtkg Scrcm Rib/P8Fatmm/.....mm Dent EMAcm² IMF% Dam 2 Calves 5 Years**Comments:** A bull with frame and growth sired by our trait leader bull Mooroobie Edgeroi E27.

Purchaser Price \$

Lot 61**MOOROOBIE JAMAICA J107 (APR)****Reg** APR**ID** QBPJ107**DOB** 22/06/2013

ARDROSSAN CASINO C18 (AI) (ET)

SIRE QBPF69 MOOROOBIE FIDDESTICKS F69 (AI)
ALPINE DAWN D30

MOOROOBIE BARRY B23 (AI) (ET)

DAM QBPE52 MOOROOBIE BARUNAH E52 (APR)
WATTLETOP W295 (APR) (AI)

July 2015 Angus Australia BREEDPLAN

	CE	CE	GL	BW	200	400	600	MC	Milk	SS	DC	CWE	EMA	Rib	Rump	RBY	IMF
EBV	-3.3	--	--	+5.0	+42	+74	+101	+93	+12	+0.4	--	+58	+1.3	-0.7	-0.3	-0.2	+1.2
Acc	41%			72%	66%	66%	63%	58%	48%	69%		54%	54%	54%	56%	50%	47%
\$ INDEX VALUES			Angus Breeding: +\$79				Domestic: +\$83				Heavy Grain: +\$72			Heavy Grass: +\$84			

Wtkg Scrcm Rib/P8Fatmm/.....mm Dent EMAcm² IMF% Dam 5 Calves 6 Years**Comments:** From a cow who has had five calves in the last six years. Suitable for heifers.

Purchaser Price \$

Lot 62**MOOROOKIE JOSIAH J64 (ET)****Reg** HBR**ID** QBPJ64**DOB** 05/06/2013

TE MANIA BARTEL B219 (AI) (ET)
SIRE BHRE614 DUNOON EVIDENT E614 (AI) (ET)
 DUNOON ELSA B681

THREE TREES ROCK ON 0059
DAM QPDZ1 BULLIAC COPPER Z1 (AI)
 ARDROSSAN COPPER U117 (AI) (ET)

July 2015 Angus Australia BREEDPLAN																	
	CE	CE	GL	BW	200	400	600	MC	Milk	SS	DC	CWE	EMA	Rib	Rump	RBY	IMF
EBV	-8.6	-2.6	-0.9	+6.7	+51	+85	+113	+113	+13	+3.5	-5.0	+64	+8.9	-0.8	-0.9	+2.2	+0.4
Acc	55%	47%	66%	73%	69%	70%	69%	65%	59%	71%	42%	61%	61%	61%	62%	57%	58%
\$ INDEX VALUES			Angus Breeding: +\$94				Domestic: +\$94				Heavy Grain: +\$88			Heavy Grass: +\$97			

Wtkg Scrcm Rib/P8Fatmm/.....mm Dent EMAcm² IMF% Dam **16** Calves **11** Years

Comments: If growth, carcase and moderate birthweight are what your herd needs, this Dunoon Evident E614 son of a Bullia Copper cow is for you.

Purchaser

Price \$

Lot 63**MOOROOKIE JACKPOT J18 (ET)****Reg** HBR**ID** QBPJ18**DOB** 27/05/2013

TC TOTAL 410
SIRE USA15462648 TC FRANKLIN 619
 TC MARCIA 1069

BANQUET ABODE A005 (AI)
DAM NFJE12 FORRES BURNETTE E12
 FORRES BURNETTE Z46 (AI) (ET)

**SIRE****GRAND SIRE**

July 2015 Angus Australia BREEDPLAN																	
	CE	CE	GL	BW	200	400	600	MC	Milk	SS	DC	CWE	EMA	Rib	Rump	RBY	IMF
EBV	-1.1	+1.1	-3.4	+3.9	+49	+87	+114	+102	+14	+2.0	-4.0	+61	+4.3	-1.3	-0.2	+0.2	+1.5
Acc	54%	45%	61%	73%	68%	69%	68%	64%	57%	71%	38%	60%	60%	61%	61%	57%	56%
\$ INDEX VALUES			Angus Breeding: +\$108				Domestic: +\$105				Heavy Grain: +\$108			Heavy Grass: +\$108			

Wtkg Scrcm Rib/P8Fatmm/.....mm Dent EMAcm² IMF% Dam **10** Calves **7** Years

Comments: A good balance of low birthweight, growth and carcase from this son of the low birthweight TC Franklin 619 from the donor Forres Burnette E12 (a Banquet Adobe daughter) who has 10 offspring over seven years.

Purchaser

Price \$

Lot 64**MOOROOKIE JIM J9 (AI)****Reg** HBR**ID** QBPJ9**DOB** 24/05/2013

BALD BLAIR ULONG A16 (AI)
SIRE NBBD34 BALD BLAIR DEBONAIR D34 (AI)
 BALD BLAIR X14 (AI)

FAMOUS 7001
DAM QBPY24 MOOROOKIE EXPENSIVE FAMOUS Y24 (AI) (ET)
 FARRER EXPENSIVE R12 (AI)

July 2015 Angus Australia BREEDPLAN																	
	CE	CE	GL	BW	200	400	600	MC	Milk	SS	DC	CWE	EMA	Rib	Rump	RBY	IMF
EBV	+1.0	+3.5	-4.6	+3.2	+43	+75	+95	+93	+16	+3.5	-5.5	+52	+5.1	+0.0	-0.2	+0.7	+1.6
Acc	54%	44%	85%	75%	70%	71%	69%	65%	61%	73%	40%	62%	61%	61%	62%	57%	56%
\$ INDEX VALUES			Angus Breeding: +\$106				Domestic: +\$106				Heavy Grain: +\$107			Heavy Grass: +\$104			

Wtkg Scrcm Rib/P8Fatmm/.....mm Dent EMAcm² IMF% Dam **9** Calves **12** Years

Comments: A low birthweight bull derived from both parents with good carcase and fertility reflected by scrotal and longevity on the dam's side. The dam had nine calves in her 12 years prior to being sold. Farrer Expensive, the grand dam, had 38 calves for us over her 10 years.

Purchaser

Price \$

Lot 65**MOOROOKIE JEREMY J20 (AI)****Reg** HBR**ID** QBPJ20**DOB** 28/05/2013

SIRE BALD BLAIR ULONG A16 (AI)
 NBBD34 BALD BLAIR DEBONAIR D34 (AI)
 BALD BLAIR X14 (AI)

DAM MOOROOKIE ECLIPSE E38 (AI)
 QBPG60 MOOROOKIE WILCOOLA E38 G60 (AI)
 MOOROOKIE WILCOOLA HIGHMARK C43 (AI) (ET)

July 2015 Angus Australia BREEDPLAN																	
	CE	CE	GL	BW	200	400	600	MC	Milk	SS	DC	CWE	EMA	Rib	Rump	RBY	IMF
EBV	-4.9	-1.3	-0.5	+5.4	+43	+69	+92	+98	+11	+0.3	-4.4	+50	+2.9	-0.3	-0.3	-0.3	+1.6
Acc	49%	40%	84%	73%	68%	69%	66%	62%	55%	72%	38%	59%	52%	59%	61%	54%	54%
\$ INDEX VALUES			Angus Breeding: +\$75				Domestic: +\$79				Heavy Grain: +\$72				Heavy Grass: +\$77		

Wtkg Scrcm Rib/P8Fatmm/.....mm Dent EMAcm² IMF% Dam 3 Calves 4 Years

Comments: A moderate-birthweight bull with moderate growth and carcass.

Purchaser

Price \$

Lot 66**MOOROOKIE JACKAL J115****Reg** HBR**ID** QBPJ115**DOB** 24/06/2013

SIRE VERMILION NEW DESIGN L805
 CCVE482 VERMONT DUKE E482 (AI)
 VERMONT LOWAN B261 (AI) (ET)

DAM MOOROOKIE BAZOOKA B27 (AI) (ET)
 QBPD21 MOOROOKIE YANA B27 D2
 MOOROOKIE YANA 095 B14 (AI) (ET)



July 2015 Angus Australia BREEDPLAN																	
	CE	CE	GL	BW	200	400	600	MC	Milk	SS	DC	CWE	EMA	Rib	Rump	RBY	IMF
EBV	-2.2	--	-2.0	+5.8	+46	+80	+106	+100	+14	+1.8	--	+63	+7.1	-1.1	-1.2	+1.2	+1.7
Acc	42%		54%	72%	64%	64%	62%	57%	46%	62%		53%	50%	51%	51%	47%	45%
\$ INDEX VALUES			Angus Breeding: +\$107				Domestic: +\$103				Heavy Grain: +\$113				Heavy Grass: +\$105		

Wtkg Scrcm Rib/P8Fatmm/.....mm Dent EMAcm² IMF% Dam 7 Calves 7 Years

Comments: His moderate birthweight and carcass will make this bull an asset in any herd.

Purchaser

Price \$

Lot 67**MOOROOKIE JULIAN J78****Reg** HBR**ID** QBPJ78**DOB** 13/06/2013

SIRE VERMILION NEW DESIGN L805
 CCVE482 VERMONT DUKE E482 (AI)
 VERMONT LOWAN B261 (AI) (ET)

DAM PRAIRIEDGE MARBULL DESIGN931
 QBPF26 MOOROOKIE CHAMPAGNE 931 F26 (AI)
 MOOROOKIE CHAMPAGNE 931 B28 (AI) (ET)



July 2015 Angus Australia BREEDPLAN																	
	CE	CE	GL	BW	200	400	600	MC	Milk	SS	DC	CWE	EMA	Rib	Rump	RBY	IMF
EBV	-3.2	-2.1	-0.5	+5.4	+42	+75	+95	+82	+16	+1.7	-4.7	+57	+2.4	-1.9	-2.0	+0.8	+1.4
Acc	46%	39%	62%	73%	68%	69%	66%	61%	50%	69%	40%	57%	57%	58%	59%	54%	52%
\$ INDEX VALUES			Angus Breeding: +\$86				Domestic: +\$92				Heavy Grain: +\$86				Heavy Grass: +\$86		

Wtkg Scrcm Rib/P8Fatmm/.....mm Dent EMAcm² IMF% Dam 4 Calves 5 Years

Comments: A stylish bull from Vermont Duke E482 who had been widely used in our herd post-AI and going back to Ythanbrae VLYV19, who we bought as a heifer 15 years ago.

Purchaser

Price \$

CARABAR ANGUS

(CONTINUED)

Lot 68

CARABAR CRUISER J168

Reg HBR **ID** QHEJ168 **DOB** 03/10/2013

VS A NEUTRON 377
SIRE QHEC55 CARABAR CRUISER NEUTRON C55 (AI) (ET)
 BOOROOMOOKA TRACY T4 (AI) (ET)
 SUMMITCREST SCOTCH CAP OB45
DAM QHEE51 CARABAR HEATHER E51 (AI)
 CARABAR HEATHER C32 (AI) (ET)



July 2015 Angus Australia BREEDPLAN																	
	CE	CE	GL	BW	200	400	600	MC	Milk	SS	DC	CWE	EMA	Rib	Rump	RBV	IMF
EBV	+0.9	+0.9	-2.5	+5.3	+47	+84	+108	+87	+12	+2.7	-5.6	+56	+5.4	+1.6	+3.2	-0.1	+1.4
Acc	48%	43%	57%	74%	67%	67%	73%	66%	50%	72%	44%	59%	59%	59%	59%	55%	54%
\$ INDEX VALUES			Angus Breeding: +\$119				Domestic: +\$112				Heavy Grain: +\$116			Heavy Grass: +\$119			

Wtkg Scrcm Rib/P8Fatmm/.....mm Dent EMAcm² IMF% DamCalvesYears

Comments: Solid-type of easy-doing bull with moderate frame. Good growth and carcass figures.

Purchaser Price \$

Lot 69

CARABAR WHEEL WRIGHT J173

Reg HBR **ID** QHEJ173 **DOB** 14/10/2013

HYLINE RIGHT TIME 338 (ET)
SIRE EFTD6 THE GRANGE WHEEL WRIGHT D6 (AI) (ET)
 IMRAN MISS VEGAS U20 (AI) (ET)
 S A NEUTRON 377
DAM QHEC16 CARABAR HEATHER C16 (AI) (ET)
 COMFORT HILL HEATHER X89 (AI) (ET)



July 2015 Angus Australia BREEDPLAN																	
	CE	CE	GL	BW	200	400	600	MC	Milk	SS	DC	CWE	EMA	Rib	Rump	RBV	IMF
EBV	-4.2	+0.1	-2.4	+6.3	+52	+90	+114	+113	+13	+3.5	-5.9	+71	+5.2	-0.7	+0.7	+1.0	+1.0
Acc	50%	44%	58%	74%	68%	68%	73%	66%	55%	73%	43%	59%	59%	59%	61%	56%	54%
\$ INDEX VALUES			Angus Breeding: +\$108				Domestic: +\$106				Heavy Grain: +\$106			Heavy Grass: +\$108			

Wtkg Scrcm Rib/P8Fatmm/.....mm Dent EMAcm² IMF% DamCalvesYears

Comments: This bull has a moderate frame, high growth and carcass EBVs. A soft-skinned, good-doing type.

Purchaser Price \$

Lot 70**CARABAR GRANDSTAND K175**

Reg HBR

ID QHEK175

DOB 04/11/2014

ARDROSSAN ADMIRAL A2 (AI) (ET)
SIRE QHEG168 CARABAR GRANDSTAND G168 (AI) (ET)
 CARABAR BLACKCAP MARY B12 (AI) (ET)

TE MANIA BERKLEY B1 (AI)
DAM QHEG178 CARABAR PRINCESS ZENA G178 (AI) (ET)
 CARABAR PRINCESS ZENA C9 (AI) (ET)



July 2015 Angus Australia BREEDPLAN																	
	CE	CE	GL	BW	200	400	600	MC	Milk	SS	DC	CWE	EMA	Rib	Rump	RBY	IMF
EBV	+1.2	-0.3	--	+5.8	--	--	--	+121	+16	+1.8	-5.9	+71	--	--	--	--	--
Acc	46%	41%		70%				55%	45%	50%	40%	50%					
\$ INDEX VALUES			Angus Breeding: +\$133				Domestic: +\$115				Heavy Grain: +\$152				Heavy Grass: +\$123		

Wtkg Scrcm Rib/P8Fatmm/.....mm Dent EMAcm² IMF% DamCalvesYears

Comments: A solid type of bull. Medium birthweight, good growth and carcase figures. A moderate frame. Positive fat carrier.

Purchaser Price \$

Lot 71**CARABAR RITO 9969 J205 (AI) (ET)**

Reg HBR

ID QHEJ205

DOB 02/11/2013

RITO 707 OF IDEAL 3407 7075
SIRE USA16417285 S A V 707 RITO 9969
 BR POLLY 8077-472

BON VIEW NEW DESIGN 1407
DAM QHEB12 CARABAR BLACKCAP MARY B12 (AI) (ET)
 BOOROOMOOKA TRACY T4 (AI) (ET)



July 2015 Angus Australia BREEDPLAN																	
	CE	CE	GL	BW	200	400	600	MC	Milk	SS	DC	CWE	EMA	Rib	Rump	RBY	IMF
EBV	+0.7	+0.3	-3.7	+5.4	+49	+97	+129	+103	+19	+2.6	-3.0	+68	+2.3	-1.3	-0.6	+0.5	+1.2
Acc	48%	37%	62%	75%	69%	69%	73%	65%	54%	73%	39%	60%	60%	61%	61%	56%	55%
\$ INDEX VALUES			Angus Breeding: +\$117				Domestic: +\$112				Heavy Grain: +\$119				Heavy Grass: +\$118		

Wtkg Scrcm Rib/P8Fatmm/.....mm Dent EMAcm² IMF% DamCalvesYears

Comments: A muscular type of bull with good body length, moderate birthweight and very high growth.

Purchaser Price \$

Lot 72**CARABAR BANDIT J245**

Reg HBR

ID QHEJ245

DOB 04/12/2013

BON VIEW NEW DESIGN 1407
SIRE QHEB49 CARABAR BANDIT 1407 B49 (AI) (ET)
 CARABAR HEATHER Z24 (AI) (ET)

TE MANIA BETTER BEEF B177 (AI) (ET)
DAM QHEE90 CARABAR BLACKCAP MARY E90 (AI) (ET)
 BOOROOMOOKA TRACY T4 (AI) (ET)



July 2015 Angus Australia BREEDPLAN																	
	CE	CE	GL	BW	200	400	600	MC	Milk	SS	DC	CWE	EMA	Rib	Rump	RBY	IMF
EBV	+0.6	+0.3	-2.5	+4.4	+42	+73	+98	+73	+15	+1.6	-4.1	+54	+6.9	+0.1	+0.3	+0.5	+2.0
Acc	48%	41%	55%	72%	67%	67%	72%	65%	50%	72%	42%	59%	59%	59%	61%	56%	54%
\$ INDEX VALUES			Angus Breeding: +\$110				Domestic: +\$105				Heavy Grain: +\$112				Heavy Grass: +\$109		

Wtkg Scrcm Rib/P8Fatmm/.....mm Dent EMAcm² IMF% DamCalvesYears

Comments: A soft-skinned, good-doing type of bull with a moderate frame and good body length. High eye muscle and marbling. Positive fat cover. Suitable for heifers.

Purchaser Price \$

Lot 73**CARABAR BODINE J246**

Reg HBR

ID QHEJ246

DOB 05/12/2013

BON VIEW NEW DESIGN 1407
SIRE QHEB16 CARABAR BODINE 1407 B16 (AI) (ET)
 BOOROOMOOKA TRACY T4 (AI) (ET)

VERMILION YELLOWSTONE
DAM QHEE105 CARABAR BARBARA E105 (AI) (ET)
 CARABAR BARBARA Y5 (AI) (ET)



July 2015 Angus Australia BREEDPLAN																	
	CE	CE	GL	BW	200	400	600	MC	Milk	SS	DC	CWE	EMA	Rib	Rump	RBY	IMF
EBV	+2.5	+1.5	-3.9	+4.9	+41	+74	+101	+83	+15	+0.9	-5.0	+47	+1.9	-0.3	+0.3	-0.4	+2.1
Acc	50%	45%	51%	75%	68%	68%	73%	66%	52%	73%	45%	60%	60%	60%	62%	57%	55%
\$ INDEX VALUES			Angus Breeding: +\$108				Domestic: +\$101				Heavy Grain: +\$114				Heavy Grass: +\$106		

Wtkg Scrcm Rib/P8Fatmm/.....mm Dent EMAcm² IMF% DamCalvesYears

Comments: This bull has good body length with a moderate frame. Above-average growth, high marbling and positive fat cover.

Purchaser Price \$

Lot 74**CARABAR BODINE J272**

Reg HBR

ID QHEJ272

DOB 21/12/2013

BON VIEW NEW DESIGN 1407
SIRE QHEB16 CARABAR BODINE 1407 B16 (AI) (ET)
 BOOROOMOOKA TRACY T4 (AI) (ET)

CARABAR BANDIT 1407 B49 (AI) (ET)
DAM QHEE66 CARABAR PRINCESS ZENA E66
 CARABAR PRINCESS ZENA C10 (AI) (ET)



July 2015 Angus Australia BREEDPLAN																	
	CE	CE	GL	BW	200	400	600	MC	Milk	SS	DC	CWE	EMA	Rib	Rump	RBY	IMF
EBV	+1.0	+0.1	--	+5.0	+44	+78	+105	+82	+15	+1.1	-4.2	+53	+6.6	-0.3	-0.4	+0.4	+2.1
Acc	47%	40%		74%	68%	68%	73%	66%	50%	72%	42%	59%	59%	60%	61%	56%	54%
\$ INDEX VALUES			Angus Breeding: +\$115				Domestic: +\$107				Heavy Grain: +\$120				Heavy Grass: +\$112		

Wtkg Scrcm Rib/P8Fatmm/.....mm Dent EMAcm² IMF% DamCalvesYears

Comments: A nice style of good-doing bull with a moderate frame. Good growth with high eye muscle and marbling.

Purchaser Price \$

Lot 75**CARABAR JORDAN J280**

Reg HBR

ID QHEJ280

DOB 26/12/2013

VERMILION YELLOWSTONE
SIRE QHEE35 CARABAR ELITE E35 (AI) (ET)
 CARABAR BARBARA Y5 (AI) (ET)

CARABAR FUTURE DIRECTION A18 (AI) (ET)
DAM QHEC53 CARABAR HEATHER C53
 CARABAR HEATHER A33 (AI) (ET)



July 2015 Angus Australia BREEDPLAN																	
	CE	CE	GL	BW	200	400	600	MC	Milk	SS	DC	CWE	EMA	Rib	Rump	RBY	IMF
EBV	+0.7	+1.2	--	+5.2	+43	+75	+104	+91	+16	+0.7	-4.9	+55	+2.3	-1.3	-1.1	-0.1	+2.2
Acc	43%	37%		73%	65%	65%	71%	64%	46%	70%	39%	56%	55%	56%	58%	52%	49%
\$ INDEX VALUES			Angus Breeding: +\$107				Domestic: +\$99				Heavy Grain: +\$115				Heavy Grass: +\$103		

Wtkg Scrcm Rib/P8Fatmm/.....mm Dent EMAcm² IMF% DamCalvesYears

Comments: This bull has good body thickness and length. A good, easy-doing type with above-average growth and high marbling.

Purchaser Price \$

Lot 76**CARABAR WHEEL WRIGHT J283****Reg** HBR**ID** QHEJ283**DOB** 26/12/2013

HYLINE RIGHT TIME 338 (ET)

SIRE EFTD6 THE GRANGE WHEEL WRIGHT D6 (AI) (ET)
IMRAN MISS VEGAS U20 (AI) (ET)

TE MANIA BETTER BEEF B177 (AI) (ET)

DAM QHEE114 CARABAR BLACKCAP MARY E114 (AI) (ET)
BOOROOMOOKA TRACY T4 (AI) (ET)

July 2015 Angus Australia BREEDPLAN

	CE	CE	GL	BW	200	400	600	MC	Milk	SS	DC	CWE	EMA	Rib	Rump	RBY	IMF
EBV	-3.4	+0.3	-3.2	+6.8	+52	+92	+125	+111	+15	+3.1	-4.3	+70	+3.1	+0.6	+2.6	-0.5	+1.8
Acc	50%	43%	58%	74%	68%	68%	73%	66%	54%	73%	42%	59%	60%	60%	62%	57%	55%
\$ INDEX VALUES				Angus Breeding: +\$114				Domestic: +\$103			Heavy Grain: +\$116			Heavy Grass: +\$113			

Wtkg Scrcm Rib/P8Fatmm/.....mm Dent EMAcm² IMF% DamCalvesYears**Comments:** A moderate-framed, tickset bull with very high growth and carcase figures. High marbling. Positive fat cover.

Purchaser

Price \$

DANGARFIELD SANTA GERTRUDIS

THE ADAMS FAMILY of Dangarfield Cattle Co are looking forward to the chance of offering a draft of 10 young bulls at the Balonne Invitation Bull Sale.

We are now operating in the 4th generation of our family run business, since purchasing Dangarfield in 1947 and breeding Santa's since 1958. We currently join close to 1,300 females annually and conduct several ET programs throughout the year. Our breeders are all run under the same conditions and carry the expectations that they go in calf every year or be turned over to carcass.

Our goals are simple – high performing, easy doing, quiet and fertile cattle.

400-500 stud cows are joined annually, and we also run a purebred commercial herd, where the pick of the crop heifers are graded up into the stud herd each year.

All of our weaners are educated with horses, dogs and quad bikes, and worked on foot through the yards. Any trouble-makers along the way are culled and grown out for the EU market. After weaning, the bulls are placed on Leucaena, where they are grown out until 60-90 days (depending on the season) before the sale. The auction bulls are then supplementary-fed in open paddocks and are made to walk one kilometre from feed to water; meaning they cover a minimum of 4km a day, keeping them fit and healthy.

They are bred to perform, not fed to perform.

We take great pride in the number of our clients who return, year in, year out to buy our bulls through both auction and private sales. Over the last nine years our auction sales have enjoyed 93% repeat clientele.

When purchasing our cattle you can be confident with generations of fertile and efficient cattle that are backed by accurate information and our stud, family and personal reputation.

Feedback on our cattle is always welcome.

We look forward on catching up with you at the Balonne Sale.

Regards,
BEN & AMANDA ADAMS
Phone: 07 4627 3745 | 0427 061 081
"KINGSWOOD", Taroom
Email: ben@dangarfield.com.au

Lot 77	DANGARFIELD X159	Reg S	ID DAN14MX159	DOB 6/08/2013
---------------	-------------------------	--------------	----------------------	----------------------

G.B.L. 451 220085
SIRE HILLSIDE FOUREX (P) 260587
DIAMOND T VANITY (P) 192210
DANGARFIELD FIRETRUCK (P) 191926
DAM DANGARFIELD 1552 232728
DANGARFIELD 5204 AP4.188027

July 2015 Santa Gertrudis GROUP BREEDPLAN																	
	CE	CE	GL	BW	200	400	600	MC	Milk	SS	DC	CWE	EMA	Rib	Rump	RBV	IMF
EBV																	
Acc																	
\$ INDEX VALUES				Domestic: N/A								Export: N/A					

Wtkg Scrcm Rib/P8Fatmm/.....mm Dent EMAcm² IMF% Dam 12 Calves 14 Years

Comments: Hillside Fourex (P) has done a good job in the Dangarfield herd. We have used him successfully over yearling maiden heifers. Many daughters have been retained in herd and sons have sold to top at \$36,000. Dangarfield 1552 has raised 12 calves with a 358 day interval.

Purchaser Price \$

Lot 78**DANGARFIELD X155****Reg S****ID** DAN14MX155**DOB** 23/08/2013

G.B.L. 451 220085

SIRE HILLSIDE FOUREX (P) 260587
DIAMOND T VANITY (P) 192210

WARRILLEE VERNON 233904

DAM DANGARFIELD 7443 270862
DANGARFIELD 4557 (P) AP4.261307

July 2015 Santa Gertrudis GROUP BREEDPLAN																	
	CE	CE	GL	BW	200	400	600	MC	Milk	SS	DC	CWE	EMA	Rib	Rump	RBY	IMF
EBV																	
Acc																	
\$ INDEX VALUES				Domestic: N/A							Export: N/A						

Wtkg Scrcm Rib/P8Fatmm/.....mm Dent EMAcm² IMF% Dam 7 Calves 9 Years**Comments:** Dangarfield 7443 has raised seven calves with a 362 day interval and sons have sold to \$8500. She is by Warrillee Vernon who has left some top-shelf daughters in both our stud and commercial herds. X155 has two separate bloodlines in his pedigree that we used successfully over yearling maiden heifers.

Purchaser Price \$

Lot 79**DANGARFIELD X181****Reg****ID** DAN14MX181**DOB** 1/10/2013

DANGARFIELD LIEUTENANT 237964

SIRE DANGARFIELD UNDERCOVER U003 297427
DANGARFIELD 4713 AP4.252924

DANGARFIELD IMPROVEMENT I042 215077

DAM DANGARFIELD 7426 (AI) 270856
DANGARFIELD 5224 AP4.188047

July 2015 Santa Gertrudis GROUP BREEDPLAN																	
	CE	CE	GL	BW	200	400	600	MC	Milk	SS	DC	CWE	EMA	Rib	Rump	RBY	IMF
EBV																	
Acc																	
\$ INDEX VALUES				Domestic: N/A							Export: N/A						

Wtkg Scrcm Rib/P8Fatmm/.....mm Dent EMAcm² IMF% Dam 7 Calves 9 Years**Comments:** Two of our better bloodlines combine in X181's pedigree with Lieutenant and Improvement. Dangarfield 7426 has raised seven calves with a 359 day interval. Sons have sold to \$4500.

Purchaser Price \$

Lot 80**DANGARFIELD X241****Reg S****ID** DAN14MX241**DOB** 9/09/2013

ROCKINGHAM B14 (P)

SIRE ROCKINGHAM E-MALE (P)
ROCKINGHAM A77

MULTIPLE SIRE 999999

DAM DANGARFIELD 2257 (P) DAN12F2257

July 2015 Santa Gertrudis GROUP BREEDPLAN																	
	CE	CE	GL	BW	200	400	600	MC	Milk	SS	DC	CWE	EMA	Rib	Rump	RBY	IMF
EBV																	
Acc																	
\$ INDEX VALUES				Domestic: N/A							Export: N/A						

Wtkg Scrcm Rib/P8Fatmm/.....mm Dent EMAcm² IMF% Dam 2 Calves 4 Years**Comments:** Dangarfield X241 is a heifer's first calf.

Purchaser Price \$

Lot 81**DANGARFIELD X226****Reg****ID** DAN14MX226**DOB** 13/08/2013

MULTIPLE SIRE 999999

SIRE DANGARFIELD TAROOM DAN10MT241

MULTIPLE DAM 999998

DANGARFIELD LIEUTENANT 237964

DAM DANGARFIELD 7466 270870

DANGARFIELD 1463 232652

July 2015 Santa Gertrudis GROUP BREEDPLAN																	
	CE	CE	GL	BW	200	400	600	MC	Milk	SS	DC	CWE	EMA	Rib	Rump	RBY	IMF
EBV																	
Acc																	
\$ INDEX VALUES				Domestic: N/A								Export: N/A					

Wtkg Scrcm Rib/P8Fatmm/.....mm Dent EMAcm² IMF% Dam 6 Calves 8 Years**Comments:** Dangarfield 7466 has raised six progeny with a 340-day interval. This is the first son of Dangarfield Taroom to go to auction.

Purchaser Price \$

Lot 82**DANGARFIELD P129 (P)****Reg****ID** DAN14MP129**DOB** 1/09/2013

WARENDA ROLEX (AI) 256125

SIRE HARDIGREEN PARK LEGEND 278129

PINAROO P78 221915

DAM MULTIPLE DAM 999998

July 2015 Santa Gertrudis GROUP BREEDPLAN																	
	CE	CE	GL	BW	200	400	600	MC	Milk	SS	DC	CWE	EMA	Rib	Rump	RBY	IMF
EBV																	
Acc																	
\$ INDEX VALUES				Domestic: N/A								Export: N/A					

Wtkg Scrcm Rib/P8Fatmm/.....mm Dent EMAcm² IMF% DamCalvesYears**Comments:** If you want to breed big, easy-doing cattle to easily turn off grass, we strongly recommend the Hardigreen Park Legend bloodline.

Purchaser Price \$

Lot 83**DANGARFIELD X249****Reg****ID** DAN14MX249**DOB** 29/09/2013

WAVE HILL BALDWIN (P)

SIRE WARRILLEE EVERREADY

WARRILLEE B61

DANGARFIELD PATROL CHIEF 261568

DAM DANGARFIELD 2164 CR532495

DANGARFIELD 8491 279669

July 2015 Santa Gertrudis GROUP BREEDPLAN																	
	CE	CE	GL	BW	200	400	600	MC	Milk	SS	DC	CWE	EMA	Rib	Rump	RBY	IMF
EBV																	
Acc																	
\$ INDEX VALUES				Domestic: N/A								Export: N/A					

Wtkg Scrcm Rib/P8Fatmm/.....mm Dent EMAcm² IMF% Dam 2 Calves 4 Years**Comments:** Dangarfield S249 is a heifer's first calf. Dangarfield 2164 has raised two calves with a 395-day interval. She is by Patrol Chief who achieved plenty in his time in our stud herd. Twenty-three sons have sold to top at \$26,000 and average \$9930.

Purchaser Price \$

Lot 84**DANGARFIELD X262 (PS)****Reg S****ID** DAN14MX262**DOB** 15/09/2013

SAVE HILL BALDWIN (P)
SIRE WARRILLEE EVERREADY
 WARRILLEE B61

DANGARFIELD SUMMIT S020 (P) 283175
DAM DANGARFIELD 2025 DAN12F2025
 DANGARFIELD 5387 259180

July 2015 Santa Gertrudis GROUP BREEDPLAN																	
	CE	CE	GL	BW	200	400	600	MC	Milk	SS	DC	CWE	EMA	Rib	Rump	RBY	IMF
EBV																	
Acc																	
\$ INDEX VALUES			Domestic: N/A									Export: N/A					

Wtkg Scrcm Rib/P8Fatmm/.....mm Dent EMAcm² IMF% Dam 2 Calves 4 Years

Comments: Dangarfield X262 is a heifer's first calf.

Purchaser Price \$

Lot 85**DANGARFIELD X246 (P)****Reg****ID** DAN14MX246**DOB** 7/09/2013

ROCKINGHAM B14 (P)
SIRE ROCKINGHAM E-MALE (P)
 ROCKINGHAM A77

HILLSIDE FOUREX (P) 260587
DAM DANGARFIELD 2159 (P) DAN12F2159
 DANGARFIELD 3584 AP4.261330

July 2015 Santa Gertrudis GROUP BREEDPLAN																	
	CE	CE	GL	BW	200	400	600	MC	Milk	SS	DC	CWE	EMA	Rib	Rump	RBY	IMF
EBV																	
Acc																	
\$ INDEX VALUES			Domestic: N/A									Export: N/A					

Wtkg Scrcm Rib/P8Fatmm/.....mm Dent EMAcm² IMF% DamCalvesYears

Comments: Dangarfield X246 is a heifer's first calf. Hillside Fourex (P) has sold sons to \$36,000.

Purchaser Price \$

Lot 86**DANGARFIELD P139 (P)****Reg****ID** DAN14MP139**DOB** 1/11/2013

DRENSMAINE TANAMI (P) 273313
SIRE RAYTEK FULLBACK F16 (PS) 289476
 RAYTEK D38 275758

DAM MULTIPLE DAM 999998

July 2015 Santa Gertrudis GROUP BREEDPLAN																	
	CE	CE	GL	BW	200	400	600	MC	Milk	SS	DC	CWE	EMA	Rib	Rump	RBY	IMF
EBV																	
Acc																	
\$ INDEX VALUES			Domestic: N/A									Export: N/A					

Wtkg Scrcm Rib/P8Fatmm/.....mm Dent EMAcm² IMF% DamCalvesYears

Comments: ???

Purchaser Price \$

SWAN HILL SANTA GERTRUDIS

THE RUSSELL FAMILY has been breeding Santa Gertrudis at Swan Hill Stud since 1960, making Swan Hill one of the few studs to have reached 50 years of breeding.

The Swan Hill Stud was founded on King Ranch bloodlines and developed with predominantly Yarrowonga bloodlines. In recent years replacement sires have been secured from a range of studs as well as from within the Swan Hill Stud.

The Swan Hill breeding program places emphasis on good muscle, a calm temperament and fertility. A strong, but not dominant poll genetic mix has always been important at Swan Hill.

The poll bloodlines were strengthened in 2009 with the addition of new poll Yarrowonga bloodlines. Cam and Terry attended the Yarrowonga 50th Celebration Sale in September 2009 and the stud purchased Yarrowonga Wattle (P), the top price (\$18,000) female of the sale.

The poll sire, Waco Winner (P) was also purchased at the same sale. He displayed excellent muscle and masculinity and will be used to strengthen the poll influence at Swan Hill. Winner's sire Romeo matured into a big volume bull with excellent sheath, fertility and temperament. We look forward to Winner's contribution to our poll herd.

In addition to scans and semen tests, the Swan Hill bulls will be GeneStar tested and results will be available on sale day.

Vaccinations: Ephemeral fever, 7-in-1 and 3 germ blood.

SWAN HILL CATTLE CO.

Swan Hill, Blackall, 4472
Phone: 07 4657 6939 | Mobile: 0419 700 288
Email: admin@swanhillcattle.com.au
Web: www.swanhillcattle.com.au

Lot 87

SWAN HILL ULTIMA R3805

Reg

ID SWA14MR3805

DOB 15/09/2013

EL PASCOL RAWHIDE 218908

SIRE SWAN HILL OLLIE R0125 (P) 279973
SWAN HILL 7061 (PS) AP2.224411

DAM MULTIPLE DAM 999998

July 2015 Santa Gertrudis GROUP BREEDPLAN																	
	CE	CE	GL	BW	200	400	600	MC	Milk	SS	DC	CWE	EMA	Rib	Rump	RBY	IMF
EBV																	
Acc																	
\$ INDEX VALUES				Domestic: N/A								Export: N/A					

Wtkg Scrcm Rib/P8Fatmm/.....mm Dent EMAcm² IMF% DamCalvesYears

Comments: Ultima has a light, tropical coat. Good Bos Indicus type.

Purchaser

Price \$

Lot 88**SWAN HILL UMPIRE R3831****Reg****ID** SWA14MR3831**DOB** 4/09/2013

SWAN HILL CHURCHILL (PS) AP1.195096

SIRE SWAN HILL KENMORE 8341 245625

SWAN HILL 6848 224356

DAM MULTIPLE DAM 999998

July 2015 Santa Gertrudis GROUP BREEDPLAN																	
	CE	CE	GL	BW	200	400	600	MC	Milk	SS	DC	CWE	EMA	Rib	Rump	RBY	IMF
EBV																	
Acc																	
\$ INDEX VALUES				Domestic: N/A								Export: N/A					

Wtkg Scrcm Rib/P8Fatmm/.....mm Dent EMAcm² IMF% DamCalvesYears**Comments:** This bull is well-muscled along the topline, continuing down through the hindquarter. If you are looking for thickness in your herd, Umpire is the one for you.

Purchaser Price \$

Lot 89**SWAN HILL UNIQUE R3972 (PS)****Reg****ID** SWA14MR3972**DOB** 9/09/2013

DANGARFIELD J060 222718

SIRE SWAN HILL R1765 292914

SWAN HILL 9282 266045

SWAN HILL 9374 (PS) 259046

DAM SWAN HILL R1947 (P) 292818

SWAN HILL 6763 224327

July 2015 Santa Gertrudis GROUP BREEDPLAN																	
	CE	CE	GL	BW	200	400	600	MC	Milk	SS	DC	CWE	EMA	Rib	Rump	RBY	IMF
EBV																	
Acc																	
\$ INDEX VALUES				Domestic: N/A								Export: N/A					

Wtkg Scrcm Rib/P8Fatmm/.....mm Dent EMAcm² IMF% DamCalvesYears**Comments:** A well-muscled, thick-set bull with a light sheath and good set of testicles.

Purchaser Price \$

Lot 90**SWAN HILL URATIC R4223 (PS)****Reg****ID** SWA14MR4223**DOB** 27/10/2013

EL PASCOL RAWHIDE 218908

SIRE SWAN HILL OLLIE R0125 (P) 279973

SWAN HILL 7061 (PS) AP2.224411

YARRAWONGA INGHAM 192580

DAM SWAN HILL 7437 241571

SWAN HILL 5188 (P) 194957

July 2015 Santa Gertrudis GROUP BREEDPLAN																	
	CE	CE	GL	BW	200	400	600	MC	Milk	SS	DC	CWE	EMA	Rib	Rump	RBY	IMF
EBV																	
Acc																	
\$ INDEX VALUES				Domestic: N/A								Export: N/A					

Wtkg Scrcm Rib/P8Fatmm/.....mm Dent EMAcm² IMF% DamCalvesYears**Comments:** A tall, well-grown bull, Uratic has good bones and well-developed testicles.

Purchaser Price \$

Lot 91**SWAN HILL UNISON R3956 (P)****Reg****ID** SWA14MR3956**DOB** 17/08/2013

DANGARFIELD J060 222718

SIRE SWAN HILL R1765 292914

SWAN HILL 9282 266045

SWAN HILL 9390 (P) 259049

DAM SWAN HILL R1986 (P) 292856

SWAN HILL 9081 252157

July 2015 Santa Gertrudis GROUP BREEDPLAN																	
	CE	CE	GL	BW	200	400	600	MC	Milk	SS	DC	CWE	EMA	Rib	Rump	RBY	IMF
EBV																	
Acc																	
\$ INDEX VALUES				Domestic: N/A							Export: N/A						

Wtkg Scrcm Rib/P8Fatmm/.....mm Dent EMAcm² IMF% DamCalvesYears**Comments:** Unison is well-muscled, an ideal bull for the bullock breeder.

Purchaser Price \$

Lot 92**SWAN HILL UNITED R4267****Reg****ID** SWA14MR4267**DOB** 7/10/2013

SWAN HILL KENMORE 8341 245625

SIRE SWAN HILL OWEN R0870 279981

SWAN HILL 7927 241249

MULTIPLE SIRE 999999

DAM SWAN HILL R1744 (PS) AP2.292568

MULTIPLE DAM 999998

	July 2015 Santa Gertrudis GROUP BREEDPLAN																
	CE	CE	GL	BW	200	400	600	MC	Milk	SS	DC	CWE	EMA	Rib	Rump	RBY	IMF
EBV																	
Acc																	
\$ INDEX VALUES				Domestic: N/A							Export: N/A						

Wtkg Scrcm Rib/P8Fatmm/.....mm Dent EMAcm² IMF% DamCalvesYears**Comments:** United is a very quiet bull. He is well-muscled and early-maturing.

Purchaser Price \$

Lot 93**SWAN HILL UNIFIER R3840 (PS)****Reg****ID** SWA14MR3840**DOB** 3/09/2013

EL PASCOL RAWHIDE 218908

SIRE SWAN HILL OLLIE R0125 (P) 279973

SWAN HILL 7061 (PS) AP2.224411

DAM MULTIPLE DAM 999998

July 2015 Santa Gertrudis GROUP BREEDPLAN																	
	CE	CE	GL	BW	200	400	600	MC	Milk	SS	DC	CWE	EMA	Rib	Rump	RBY	IMF
EBV																	
Acc																	
\$ INDEX VALUES				Domestic: N/A							Export: N/A						

Wtkg Scrcm Rib/P8Fatmm/.....mm Dent EMAcm² IMF% DamCalvesYears**Comments:** Good testicle development with this bull. An ideal bull for the commercial operator.

Purchaser Price \$

Lot 94**SWAN HILL URANUS R3785 (P)****Reg****ID** SWA14MR3785**DOB** 6/10/2013

EL PASCOL RAWHIDE 218908

SIRE SWAN HILL OLLIE R0125 (P) 279973

SWAN HILL 7061 (PS) AP2.224411

DAM MULTIPLE DAM 999998

July 2015 Santa Gertrudis GROUP BREEDPLAN																	
	CE	CE	GL	BW	200	400	600	MC	Milk	SS	DC	CWE	EMA	Rib	Rump	RBY	IMF
EBV																	
Acc																	
\$ INDEX VALUES				Domestic: N/A							Export: N/A						

Wtkg Scrcm Rib/P8Fatmm/.....mm Dent EMAcm² IMF% DamCalvesYears**Comments:** Uranus has a great temperament and a good, light tropical coat.

Purchaser Price \$

Lot 95**SWAN HILL UNIFORM R4296 (P)****Reg****ID** SWA14MR4296**DOB** 6/08/2013

EL PASCOL RAWHIDE 218908

SIRE SWAN HILL OLLIE R0125 (P) 279973

SWAN HILL 7061 (PS) AP2.224411

DAM MULTIPLE DAM 999998

July 2015 Santa Gertrudis GROUP BREEDPLAN																	
	CE	CE	GL	BW	200	400	600	MC	Milk	SS	DC	CWE	EMA	Rib	Rump	RBY	IMF
EBV																	
Acc																	
\$ INDEX VALUES				Domestic: N/A							Export: N/A						

Wtkg Scrcm Rib/P8Fatmm/.....mm Dent EMAcm² IMF% DamCalvesYears**Comments:** A well-muscled, early-maturing bull.

Purchaser Price \$

Lot 96**SWAN HILL URSA R4705 (PS)****Reg****ID** SWA14MR4705**DOB** 3/12/2013

EL PASCOL RAWHIDE 218908

SIRE SWAN HILL OLLIE R0125 (P) 279973

SWAN HILL 7061 (PS) AP2.224411

DAM MULTIPLE DAM 999998

July 2015 Santa Gertrudis GROUP BREEDPLAN																	
	CE	CE	GL	BW	200	400	600	MC	Milk	SS	DC	CWE	EMA	Rib	Rump	RBY	IMF
EBV																	
Acc																	
\$ INDEX VALUES				Domestic: N/A							Export: N/A						

Wtkg Scrcm Rib/P8Fatmm/.....mm Dent EMAcm² IMF% DamCalvesYears**Comments:** Ursa is another good bull to suit the commercial breeder.

Purchaser Price \$

Lot 97**SWAN HILL UNIT SH2572 (PS)****Reg****ID** SWA14MSH2572**DOB** 11/09/2013

EL PASCOL RAWHIDE 218908

SIRE SWAN HILL OLLIE R0125 (P) 279973

SWAN HILL 7061 (PS) AP2.224411

DAM MULTIPLE DAM 999998

July 2015 Santa Gertrudis GROUP BREEDPLAN																	
	CE	CE	GL	BW	200	400	600	MC	Milk	SS	DC	CWE	EMA	Rib	Rump	RBY	IMF
EBV																	
Acc																	
\$ INDEX VALUES				Domestic: N/A								Export: N/A					

Wtkg Scrcm Rib/P8Fatmm/.....mm Dent EMAcm² IMF% DamCalvesYears**Comments:** Unit shows good Bos Indicus traits. He has a good hooded eye, loose skin, tidy sheath and excellent testicle development.

Purchaser Price \$

Lot 98**SWAN HILL URIC R4078****Reg****ID** SWA14MR4078**DOB** 26/08/2013

SANTA LYN Z226 AP1.250800

SIRE WACO VICTA 270455

WACO Y23 245659

YARRAWONGA KIMBA 206917

DAM SWAN HILL 9563 266105

SWAN HILL 5858 201432

July 2015 Santa Gertrudis GROUP BREEDPLAN																	
	CE	CE	GL	BW	200	400	600	MC	Milk	SS	DC	CWE	EMA	Rib	Rump	RBY	IMF
EBV																	
Acc																	
\$ INDEX VALUES				Domestic: N/A								Export: N/A					

Wtkg Scrcm Rib/P8Fatmm/.....mm Dent EMAcm² IMF% DamCalvesYears**Comments:** A well-muscled bull, Uric also has good carcass traits, good bones, soft skin and a good spring of rib.

Purchaser Price \$

Lot 99**SWAN HILL VAUGHAN R4586 (P)****Reg****ID** SWA14MR4586**DOB** 23/01/2014

SUJO DASHING (PS) 238520

SIRE ROWANLEA CRAWFORD C60 (PS) 269381

ROWANLEA WINNIE W119 235751

DAM MULTIPLE DAM 999998

July 2015 Santa Gertrudis GROUP BREEDPLAN																	
	CE	CE	GL	BW	200	400	600	MC	Milk	SS	DC	CWE	EMA	Rib	Rump	RBY	IMF
EBV																	
Acc																	
\$ INDEX VALUES				Domestic: N/A								Export: N/A					

Wtkg Scrcm Rib/P8Fatmm/.....mm Dent EMAcm² IMF% DamCalvesYears**Comments:** This bull is deep-girthed, with well-muscled hindquarter, light tropical coat, early-maturing and a great temperament.

Purchaser Price \$

Lot 100**SWAN HILL UTA R4677 (PS)****Reg****ID** SWA14MR4677**DOB** 28/11/2013

CREE COMMANDER (AI) (P) 269497

SIRE SWAN HILL R2146 (PS) SWA10M2146
SWAN HILL 9290 266047

SWAN HILL 9416 259053

DAM SWAN HILL R1607 (P) 292462
SWAN HILL 7588 (P) 241192

July 2015 Santa Gertrudis GROUP BREEDPLAN																	
	CE	CE	GL	BW	200	400	600	MC	Milk	SS	DC	CWE	EMA	Rib	Rump	RBY	IMF
EBV																	
Acc																	
\$ INDEX VALUES			Domestic: N/A									Export: N/A					

Wtkg Scrcm Rib/P8Fatmm/.....mm Dent EMAcm² IMF% DamCalvesYears**Comments:** Great carcase qualities to this bull, with an excellent hindquarter.

Purchaser Price \$

Lot 101**SWAN HILL ULTIMATE R4193****Reg****ID** SWA14MR4193**DOB** 15/09/2013

YARRAWONGA ROMEO (P) 249415

SIRE WACO WINNER (P) 279436
WACO A781 AP2.273487

SWAN HILL YACHTSMAN 169437

DAM SWAN HILL 7325 228720
SWAN HILL 3820 141840

July 2015 Santa Gertrudis GROUP BREEDPLAN																	
	CE	CE	GL	BW	200	400	600	MC	Milk	SS	DC	CWE	EMA	Rib	Rump	RBY	IMF
EBV																	
Acc																	
\$ INDEX VALUES			Domestic: N/A									Export: N/A					

Wtkg Scrcm Rib/P8Fatmm/.....mm Dent EMAcm² IMF% DamCalvesYears**Comments:** Ultimate has a tidy sheath, good clean shoulders and would suit the buyer looking for the right bull to put with heifers.

Purchaser Price \$

Lot 102**SWAN HILL VICTOR R4543****Reg****ID** SWA14MR4543**DOB** 21/01/2014

SWAN HILL CHURCHILL (PS) AP1.195096

SIRE SWAN HILL KENMORE 8341 245625
SWAN HILL 6848 224356

SWAN HILL YACHTSMAN 169437

DAM SWAN HILL 8430 241665
SWAN HILL 4339 169462

July 2015 Santa Gertrudis GROUP BREEDPLAN																	
	CE	CE	GL	BW	200	400	600	MC	Milk	SS	DC	CWE	EMA	Rib	Rump	RBY	IMF
EBV																	
Acc																	
\$ INDEX VALUES			Domestic: N/A									Export: N/A					

Wtkg Scrcm Rib/P8Fatmm/.....mm Dent EMAcm² IMF% DamCalvesYears**Comments:** Victor is one of the youngest bulls of the team. He is well-grown and shows signs of lots more growth potential.

Purchaser Price \$

Lot 103	SWAN HILL UNIVERSE R4228	Reg	ID SWA14MR4228	DOB 31/10/2013
----------------	---------------------------------	------------	-----------------------	-----------------------

DANGARFIELD J060 222718
SIRE SWAN HILL 9416 259053
 SWAN HILL 7325 228720
 YARRAWONGA INGHAM 192580
DAM SWAN HILL 8390 241654
 SWAN HILL 5819 201422

July 2015 Santa Gertrudis GROUP BREEDPLAN																	
	CE	CE	GL	BW	200	400	600	MC	Milk	SS	DC	CWE	EMA	Rib	Rump	RBY	IMF
EBV																	
Acc																	
\$ INDEX VALUES			Domestic: N/A									Export: N/A					

Wtkg Scrcm Rib/P8Fatmm/.....mm Dent EMAcm² IMF% DamCalvesYears

Comments: Universe is a young, thickset, well-muscled bull with good testicle development.

Purchaser Price \$

Lot 104	SWAN HILL UTOPIAN R4637	Reg	ID SWA14MR4637	DOB 25/11/2013
----------------	--------------------------------	------------	-----------------------	-----------------------

SANTA LYN Z226 AP1.250800
SIRE WACO VICTA 270455
 WACO Y23 245659

DAM SWAN HILL 8929 AP2.252131

July 2015 Santa Gertrudis GROUP BREEDPLAN																	
	CE	CE	GL	BW	200	400	600	MC	Milk	SS	DC	CWE	EMA	Rib	Rump	RBY	IMF
EBV																	
Acc																	
\$ INDEX VALUES			Domestic: N/A									Export: N/A					

Wtkg Scrcm Rib/P8Fatmm/.....mm Dent EMAcm² IMF% DamCalvesYears

Comments: Utopian is a tall bull with still lots of growth potential.

Purchaser Price \$

Lot 105	SWAN HILL VINCENT R4709	Reg	ID SWA14MR4709	DOB 2/01/2014
----------------	--------------------------------	------------	-----------------------	----------------------

SWAN HILL CHURCHILL (PS) AP1.195096
SIRE SWAN HILL KENMORE 8341 245625
 SWAN HILL 6848 224356

DAM MULTIPLE DAM 999998

July 2015 Santa Gertrudis GROUP BREEDPLAN																	
	CE	CE	GL	BW	200	400	600	MC	Milk	SS	DC	CWE	EMA	Rib	Rump	RBY	IMF
EBV																	
Acc																	
\$ INDEX VALUES			Domestic: N/A									Export: N/A					

Wtkg Scrcm Rib/P8Fatmm/.....mm Dent EMAcm² IMF% DamCalvesYears

Comments: Vincent is a long-bodied, young bull. He shows lots of thickness.

Purchaser Price \$

GREENUP EIDSVOLD STATION

Greenup Eidsvold Station cattle are bred for:

- Constitution that is bred and selected for, through environmental pressure placed on the female herd.
- Fertility through selection for fertility traits in males and females and placing emphasis on semen morphology.
- Predictable genetics through the use of accurate comparative data and over 50 years of consistent selection.
- Market versatility and carcase traits of growth, finishing ability and efficient yield while retaining eating quality.
- Longevity through the free range production of bulls and strict standards for functional conformation.

The ultimate purpose of breeding seedstock is to improve the beef industry bottom line. Whether our clients are a stud, commercial breeder, feedlots or retail – the objective is to produce as many kilos of scrumptious beef, with the best returns. The impact our genetics have on our clients' bottom line profit is the benchmark that matters to us.

Our commercial breeding objectives are reflected in the constitution and fertility of our females and the performance through the supply chain. In 2014 Greenup Eidsvold Station steers won the champion carcase and pen of carcasses at the 2014 Eidsvold Show. Presently our steers are in the top three pens out of 600 head in the RNA Paddock to Palate competition, with an average daily weight gain of 3.26kg/hd/day at the mid-weight.

In 2014 we had to de-stock just like most of Queensland. But the steers were lighter than usual coming out of the drought and they just didn't really fit any of the usual specs. We sent the line of 200-odd steers, weighing just 290kg, to Mort & Co Grassdale feedlot to target the domestic trade.

However the steers' capacity for growth meant that by 60 days Mort & Co decided they could make a higher return on the the Jap Ox grid, despite their low entry weights. The steers exited in June, killing as 20 month old Jap, milk tooth steers averaging approx. 300kg HSCW. The steers' capacity for growth was paramount in turning a drought-affected group of light store steers into a value-added high-worth commodity.

The steer's feedlot conversion of 4.04:1 (dry matter basis), converts to 5.28:1 on an as-fed basis, while the 207 steers averaged 2.49kg/head/day over 100 days. Compared with the Beef Central standard set of representative production values for 105-day grain fed steers of 2kg ADG /head/day and the as-fed feed conversion of 7.5:1, the Greenup Eidsvold Station steers saved \$203 per head in feed costs and produced an added 42 kg in live weight gain, resulting in an increased gross margin per head of \$287 above the representative values¹.

These numbers mean you can use Greenup Eidsvold Station Bulls with confidence to put more profit into your bottom line.

If you like what you've seen today, we invite you to join us at the Greenup Eidsvold Station Annual Bull Sale on Friday September 18, at Eidsvold, where over 100 Santa and Sanguis bulls will be offered by unreserved auction. For more information on upcoming cattle sales and background information visit www.greenup.com.au or contact Rick and Alice on 07 4164 4260 or email greenup@greenup.com.au or like us on Facebook, if you're into that sort of thing!

¹ Assumptions: ration cost of \$382/tonne as fed and assuming \$2/kg LW.

Lot 106**EIDSVOLD STATION J160 (P) (P)****Reg****ID** EID13MJ160**DOB** 17/11/2012

SWAN HILL HANDYMAN 7323 (PS) 233988
SIRE GREENUP BANANA (B8) P 287251
 ROSEVALE PROMICE V566 (P) 190702

EIDSVOLD STATION Z634 248395
DAM EIDSVOLD STATION E129 281289
 EIDSVOLD STATION W121 229173

July 2015 Santa Gertrudis GROUP BREEDPLAN																	
	CE	CE	GL	BW	200	400	600	MC	Milk	SS	DC	CWE	EMA	Rib	Rump	RBY	IMF
EBV					9	16	18	15	-1	0.6	-1.9		2.8	0.7	1.1	0.2	
Acc					64%	64%	60%	56%	42%	68%	38%		46%	55%	54%	38%	
\$ INDEX VALUES					Domestic: N/A						Export: N/A						

Wtkg Scrcm Rib/P8Fatmm/.....mm Dent EMAcm² IMF% DamCalvesYears

Comments: Eidsvold Station J160 is a polled bull and is eligible for classification. Banana was an easy-doing sire – a strong characteristic of th Handyman line. J160 (P) has an early maturing pattern – excellent for achieving weight-for-age, a clean dark coat and trim underline. With great muscle and plenty of softness and finishing ability, this is a very balanced package.

Purchaser Price \$

Lot 107**EIDSVOLD STATION J418 (P) (PS)****Reg** S**ID** EID13MJ418**DOB** 10/10/2012

EIDSVOLD STATION V162 (PS) 220434
SIRE EIDSVOLD STATION F194 291580
 EIDSVOLD STATION Y457 AP2.243932

DAM EIDSVOLD STATION E1051 (P) AP2.281450

July 2015 Santa Gertrudis GROUP BREEDPLAN																	
	CE	CE	GL	BW	200	400	600	MC	Milk	SS	DC	CWE	EMA	Rib	Rump	RBY	IMF
EBV					11	14	14	26	-3	0.5			1.2	-0.3	-0.7	0.4	
Acc					58%	60%	55%	51%	32%	66%			43%	53%	52%	35%	
\$ INDEX VALUES					Domestic: N/A						Export: N/A						

Wtkg Scrcm Rib/P8Fatmm/.....mm Dent EMAcm² IMF% DamCalvesYears

Comments: Eidsvold Station J418 is a classified, pollscur bull and is a first-release son of Finn – a powerful muscled bull with great depth and capacity. J418 (PS) is a thick-set, heavily-muscled bull with lovely mobility and structural soundness.

Purchaser Price \$

Lot 108**GREENUP J188 (PS)****Reg** S**ID** GUP13MJ188**DOB** 2/11/2012

ROSEVALE BASALT B32 (P) 260933
SIRE GREENUP EXCEPTIONAL E294 (P) 282610
 GREENUP CALLEEN (C189) 277475

MULTIPLE SIRE 999999
DAM EIDSVOLD STATION D243 (P) AP2.279303
 EIDSVOLD STATION A331 265885

July 2015 Santa Gertrudis GROUP BREEDPLAN																	
	CE	CE	GL	BW	200	400	600	MC	Milk	SS	DC	CWE	EMA	Rib	Rump	RBY	IMF
EBV					16	20	29	35	1	1.6	1.8		2.2	0.1	-0.6	0.7	
Acc					64%	64%	60%	55%	37%	68%	37%		46%	55%	55%	38%	
\$ INDEX VALUES					Domestic: N/A						Export: N/A						

Wtkg Scrcm Rib/P8Fatmm/.....mm Dent EMAcm² IMF% DamCalvesYears

Comments: Greenup J188 is a classified poll scur son of Exceptional. Seven sons of Exceptional have sold to date to average \$5071 and a son –Greenup Huntsman G264 (P) – was retained for stud use. J188 (PS) is a large-framed, high-growth bull with terrific length and tidy underline.

Purchaser Price \$

Lot 109**GREENUP J018 (P)****Reg ID** GUP13MJ18 **DOB** 8/09/2012

GYRANDA CRACKERJACK V532 221216
SIRE GYRANDA ATOM 257136
 GYRANDA V197 (AI) 221248

HARDIGREEN PARK EDITOR 225785
DAM EIDSVOLD STATION D219 279295
 EIDSVOLD STATION U593 213502

July 2015 Santa Gertrudis GROUP BREEDPLAN																	
	CE	CE	GL	BW	200	400	600	MC	Milk	SS	DC	CWE	EMA	Rib	Rump	RBY	IMF
EBV					13	19	24	35	-1	2.3	0.3		3.3	-0.3	-0.7	1	
Acc					66%	66%	63%	59%	48%	70%	45%		51%	58%	58%	43%	
\$ INDEX VALUES					Domestic: N/A							Export: N/A					

Wtkg Scrcm Rib/P8Fatmm/.....mm Dent EMAcm² IMF% DamCalvesYears

Comments: Atom consistently produces progeny with great muscle, growth and unsurpassed constitution – like himself. To date, 24 sons of Atom have sold to average \$4758 with a number selling as sires to stud herds. J18 is a polled bull with plenty of length, great muscle, a large set of stones and quiet temperament.

Purchaser Price \$

Lot 110**GREENUP J142 (PS)****Reg S ID** GUP13MJ142 **DOB** 27/10/2012

ROSEVALE BASALT B32 (P) 260933
SIRE GREENUP E252 (PS) 282608
 ROSEVALE JASMIN W166 197658

DANGARFIELD NITRATE 254935
DAM GREENUP E177 282666
 GREENUP KIT KAT Y17 AP2.247647

July 2015 Santa Gertrudis GROUP BREEDPLAN																	
	CE	CE	GL	BW	200	400	600	MC	Milk	SS	DC	CWE	EMA	Rib	Rump	RBY	IMF
EBV					3	3	7	1	2	-1	3		0.9	0.3	0	0.4	
Acc					64%	64%	60%	56%	38%	68%	37%		47%	56%	55%	39%	
\$ INDEX VALUES					Domestic: N/A							Export: N/A					

Wtkg Scrcm Rib/P8Fatmm/.....mm Dent EMAcm² IMF% DamCalvesYears

Comments: Echidna has one of the best constitutions in our entire sire battery and looks like a show bull after mating consecutive mobs on ironbark forest country. He has a slick, clean coat and great muscling. J142 (P) is a polled, classified bull, with a clean coat, early-maturing pattern and very sound structure. J142 would be suitable for breeders targeting domestic markets.

Purchaser Price \$

Lot 111**EIDSVOLD STATION J278 (P) (P)****Reg ID** EID13MJ278 **DOB** 3/11/2012

TYNDALE NODDY (AI) (P) 230435
SIRE EIDSVOLD STATION EPIC E50 (AI) 287085
 EIDSVOLD STATION B361 264737

EIDSVOLD STATION T180 (PS) 207112
DAM EIDSVOLD STATION A365 (P) 259255
 EIDSVOLD STATION T773 (P) 205362

July 2015 Santa Gertrudis GROUP BREEDPLAN																	
	CE	CE	GL	BW	200	400	600	MC	Milk	SS	DC	CWE	EMA	Rib	Rump	RBY	IMF
EBV					12	26	28	29	1	1.9	3.5		4.1	0.9	1	0.6	
Acc					66%	66%	62%	58%	45%	69%	44%		51%	59%	58%	43%	
\$ INDEX VALUES					Domestic: N/A							Export: N/A					

Wtkg Scrcm Rib/P8Fatmm/.....mm Dent EMAcm² IMF% DamCalvesYears

Comments: Epic is a standout sire, with terrific body, muscle and semen – he is a complete package. Eight of his sons have sold to date to average \$4438. Eidsvold Station J278 is a polled bull and is eligible for classification. He is a meat machine, with high growth and an early-maturing pattern. He provides that elusive combination of muscle and ability to lay down fat.

Purchaser Price \$

Lot 112**Reg ID DOB****SIRE****DAM**

July 2015 Santa Gertrudis GROUP BREEDPLAN																	
	CE	CE	GL	BW	200	400	600	MC	Milk	SS	DC	CWE	EMA	Rib	Rump	RBY	IMF
EBV																	
Acc																	
\$ INDEX VALUES					Domestic: N/A							Export: N/A					

Wtkg Scrcm Rib/P8Fatmm/.....mm Dent EMAcm² IMF% DamCalvesYears

Comments:

Purchaser Price \$

Lot 113**GREENUP J184 (P)****Reg ID GUP13MJ184 DOB 14/11/2012**

SIRE ROSEVALE BASALT B32 (P) 260933
 GREENUP EXCEPTIONAL E294 (P) 282610
 GREENUP CALLEEN (C189) 277475

DAM EIDSVOLD STATION ZORO Z188 (PS) 248357
 EIDSVOLD STATION D61 (P) 279271
 EIDSVOLD STATION Y325 243832

July 2015 Santa Gertrudis GROUP BREEDPLAN																	
	CE	CE	GL	BW	200	400	600	MC	Milk	SS	DC	CWE	EMA	Rib	Rump	RBY	IMF
EBV					8	12	16	17	0	2	0.2		0.4	0.5	0.1	0	
Acc					65%	65%	61%	57%	40%	69%	40%		48%	57%	56%	40%	
\$ INDEX VALUES					Domestic: N/A							Export: N/A					

Wtkg Scrcm Rib/P8Fatmm/.....mm Dent EMAcm² IMF% DamCalvesYears

Comments: Another polled son of Exceptional, J184 (P) is also eligible for classification. J184 (P) is out of a fertile daughter of Zoro – a sire who made his mark with 18 sons selling to average \$6444, including Fletch who sold to Gylanda for \$24,000 and Feremone who sold to Rosevale for \$11,000 and another son Giovanni selling for \$15,000. J184 (P) is a dark, big-boned, polled bull, with a very quiet temperament. He has a large set of stones and very high percent normal semen. J184 is another well-balanced package that offers growth, muscle and softness.

Purchaser Price \$

ELKAY 2

DROUGHTMASTERS STUD

In 2008 60 cows which were originally owned by Bernard Richter from Dirranbandi, were purchased. These cows are medium to large framed, with excellent milk and mothering abilities. Additional to these cows, another 50 large framed cows were purchased from Ian and Ann Galloway from Roma.

In May 2009 Elkay 2 was registered as a Droughtmaster Stud, number 1407. We then set about having the best of the above cows classified and registered. Many of these dams and their female progeny are still in our stud today.

In the last five years, we have also been purchasing purebred females (often in calf to well known bulls, eg Glenlands Imparja, Wingfield Boris), from studs such as Vale View, Lagoon Bay, Minlacowie, Haigslea, GlenValley, Cedar View and Rocky View.

Our foundation sires were purchased from the very well known Glenlands stud, and were selected on weight for age and fertility. Additional sires have since been purchased from Clonlara stud at Glenmorgan in September 2012 and Cedardale in October 2013.

Our aim is to breed high quality cattle which can withstand the harsher conditions and being of very quiet temperament, with good weight for age and high fertility.

LACH & KATE MCMASTER

Jindabyne, Bungunya Qld 4494
Telephone: 07 4667 6177 | 0428 776 177
Email: jindabyne10@activ8.net.au

Lot 114 **ELKAY 2 HONOURABLE (P) LK213885M D5** **Reg CR** **ID 885** **DOB 21/02/2013**

SIRE GLENLANDS D JOHNSTONE (D) RSD04102M D5
GLENLANDS NEW STANDARD (P) U9C087922M D5
GLENLANDS 4709 (D) U9C044709F D5

DAM WEDGWOOD 1161 (P) TTZ041161M D5
HAIGSLEA 3/01 (P) HCD1103F D5
SOUTHERN CROSS MISS JEWEL (P) OFR0231F D5



July 2015 Droughtmaster GROUP BREEDPLAN

	CE	CE	GL	BW	200	400	600	MC	Milk	SS	DC	CWE	EMA	Rib	Rump	RBY	IMF
EBV																	
Acc																	
\$ INDEX VALUES																	

Wtkg Scrcm Rib/P8Fatmm/.....mm Dent EMAcm² IMF% Dam 3 Calves 5 Years

Comments:

Purchaser

Price \$

Lot 115**ELKAY 2 JACKPOT (P) LK21407M D5****Reg** REG**ID** 07**DOB** 28/09/2013**SIRE** GLENLANDS INVINCIBLE (P) U9C033973M D5

GLENLANDS POCOCK (P) U9C108905M D5

HALCYON ENIGMA (P) J6T02162F D5

DAM FAIRHAVEN 05/37 (P) PTC0537M D5

MINLACOWIE NOTAKE 7571 (D) SSD117571F D4

MINLACOWIE NOTAKE 5890 (H) SSD075890F D3



July 2015 Droughtmaster GROUP BREEDPLAN

	CE	CE	GL	BW	200	400	600	MC	Milk	SS	DC	CWE	EMA	Rib	Rump	RBY	IMF
EBV																	
Acc																	
\$ INDEX VALUES																	

Wtkg Scrcm Rib/P8Fatmm/.....mm Dent EMAcm² IMF% Dam 3 Calves 4 Years**Comments:**

Purchaser

Price \$

Lot 116**ELKAY 2 JOCKEY****Reg****ID** 994**DOB** 14/01/2014**SIRE** GLENLANDS D JOHNSTONE (D) RSD04102M D5

GLENLANDS NEW STANDARD (P) U9C087922M D5

GLENLANDS 4709 (D) U9C044709F D5

DAM DROUGHTMASTER BULL 000505M

ELKAY 2 DESERT ROSE (P) LK210259F D1

DROUGHTMASTER COW 000506F



July 2015 Droughtmaster GROUP BREEDPLAN

	CE	CE	GL	BW	200	400	600	MC	Milk	SS	DC	CWE	EMA	Rib	Rump	RBY	IMF
EBV																	
Acc																	
\$ INDEX VALUES																	

Wtkg Scrcm Rib/P8Fatmm/.....mm Dent EMAcm² IMF% Dam 4 Calves 6 Years**Comments:**

Purchaser

Price \$

Lot 117**ELKAY 2 JUSTICE GOOD (S)****Reg****ID** 902**DOB** 07/12/2013**SIRE** CALIORAN ROGER (P) (ET) 2DP067M D5

CLONLARA 1185 (P) BOM1185M D5

CLONLARA 0893 (P) BOM0893F D5

DAM DROUGHTMASTER BULL 000505M

ELKAY 2 BOX SEAT (S) LK2069F D1

DROUGHTMASTER COW 000506F



July 2015 Droughtmaster GROUP BREEDPLAN

	CE	CE	GL	BW	200	400	600	MC	Milk	SS	DC	CWE	EMA	Rib	Rump	RBY	IMF
EBV																	
Acc																	
\$ INDEX VALUES																	

Wtkg Scrcm Rib/P8Fatmm/.....mm Dent EMAcm² IMF% Dam 6 Calves 8 Years**Comments:**

Purchaser

Price \$

Lot 118**ELKAY 2 JUMBUCK****Reg****ID** 931**DOB** 28/09/2013

SIRE CALIORAN ROGER (P) (ET) 2DP067M D5
 CLONLARA 1185 (P) BOM1185M D5
 CLONLARA 0893 (P) BOM0893F D5

DAM DROUGHTMASTER BULL 000505M
 ELKAY 2 BELLE (P) LK20645F D1
 DROUGHTMASTER COW 000506F



July 2015 Droughtmaster GROUP BREEDPLAN

	CE	CE	GL	BW	200	400	600	MC	Milk	SS	DC	CWE	EMA	Rib	Rump	RBY	IMF
EBV																	
Acc																	
\$ INDEX VALUES																	

Wtkg Scrcm Rib/P8Fatmm/.....mm Dent EMAcm² IMF% Dam 6 Calves 8 Years

Comments:

Purchaser Price \$

Lot 119**ELKAY 2 JUGGERNAUT****Reg****ID** 909**DOB** 20/10/2013

SIRE GLENLANDS D JOHNSTONE (D) RSD04102M D5
 GLENLANDS NEW STANDARD (P) U9C087922M D5
 GLENLANDS 4709 (D) U9C044709F D5

DAM DROUGHTMASTER BULL 000505M
 ELKAY 2 BUTTERCUP (P) LK20619F D1
 DROUGHTMASTER COW 000506F



July 2015 Droughtmaster GROUP BREEDPLAN

	CE	CE	GL	BW	200	400	600	MC	Milk	SS	DC	CWE	EMA	Rib	Rump	RBY	IMF
EBV																	
Acc																	
\$ INDEX VALUES																	

Wtkg Scrcm Rib/P8Fatmm/.....mm Dent EMAcm² IMF% Dam 6 Calves 8 Years

Comments:

Purchaser Price \$

Lot 120**ELKAY 2 JACK OF ALL TRADES****Reg****ID** 986**DOB** 01/01/2014

SIRE CALIORAN ROGER (P) (ET) 2DP067M D5
 CLONLARA 1185 (P) BOM1185M D5
 CLONLARA 0893 (P) BOM0893F D5

DAM DROUGHTMASTER BULL 000505M
 ELKAY 2 DELECTABLE BROOKE (S) LK210242F D1
 DROUGHTMASTER COW 000506F



July 2015 Droughtmaster GROUP BREEDPLAN

	CE	CE	GL	BW	200	400	600	MC	Milk	SS	DC	CWE	EMA	Rib	Rump	RBY	IMF
EBV																	
Acc																	
\$ INDEX VALUES																	

Wtkg Scrcm Rib/P8Fatmm/.....mm Dent EMAcm² IMF% Dam 3 Calves 5 Years

Comments:

Purchaser Price \$

Lot 121**ELKAY 2 JAM-PACKED****Reg****ID** 980**DOB** 18/10/2013

SIRE CALIORAN ROGER (P) (ET) 2DP067M D5
 CLONLARA 1185 (P) BOM1185M D5
 CLONLARA 0893 (P) BOM0893F D5

DAM DROUGHTMASTER BULL 000505M
 ELKAY 2 DIXIE CHICK (P) LK210142F D1
 DROUGHTMASTER COW 000506F



July 2015 Droughtmaster GROUP BREEDPLAN

	CE	CE	GL	BW	200	400	600	MC	Milk	SS	DC	CWE	EMA	Rib	Rump	RBY	IMF
EBV																	
Acc																	
\$ INDEX VALUES																	

Wtkg Scrcm Rib/P8Fatmm/.....mm Dent EMAcm² IMF% DamCalvesYears

Comments:

Purchaser

Price \$

KILKENNY CHAROLAIS

The well known meat industry identity Michael Lawlor founded the Kilkenny Charolais Stud in 1989 by purchasing the Evora Charolais Stud of 50 cows and 30 heifers. The stud now runs 500 purebred cows which are bred in ticky forest country near Eidsvold and then the progeny are grown out on the home property near Taroom, on buffel grass.

Kilkenny Charolais are compact cattle, that are easy doing, with good fat cover, on a medium frame.

MIKE LAWLOR

Verbena Park, Taroom Qld
 Phone 0428 745 095

Lot 122**KILKENNY H95F****Reg** Herd Bull**ID** H95F**DOB** 10/12/2012**SIRE** ANC ELVIS E269F**DAM** KILKENNY C146F

July 2015 Charolais Group BREEDPLAN

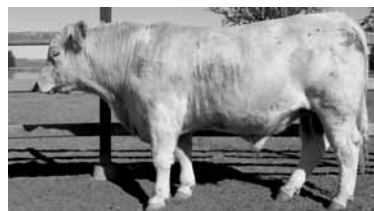
	CE	CE	GL	BW	200	400	600	MC	Milk	SS	DC	CWE	EMA	Rib	Rump	RBY	IMF
EBV																	
Acc																	
\$IndexValues: N/A				Supermarket: N/A				Grass Fed Steer: N/A				Grain Fed Steer: N/A				EU: N/A	

Wtkg Scrcm Rib/P8Fatmm/.....mm Dent EMAcm² IMF% DamCalvesYears

Comments: Full French.

Purchaser

Price \$

Lot 123**KILKENNY H208E****Reg** Herd Bull**ID** H208E**DOB** 11/12/2012**SIRE** GUNNADOO CHAIN SAW C160E**DAM** KILKENNY A22E

July 2015 Charolais Group BREEDPLAN																	
	CE	CE	GL	BW	200	400	600	MC	Milk	SS	DC	CWE	EMA	Rib	Rump	RBY	IMF
EBV																	
Acc																	
\$IndexValues: N/A				Supermarket: N/A			GrassFedSteer: N/A			GrainFedSteer: N/A			EU: N/A				

Wtkg Scrcm Rib/P8Fatmm/.....mm Dent EMAcm² IMF% DamCalvesYears

Comments: Aust Pure.

Purchaser Price \$

Lot 124**KILKENNY H167F****Reg** Herd Bull**ID** H167F**DOB** 17/12/2012**SIRE** AYR EDWARDS ELKINGTON D486F**DAM** KILKENNY C7F

	July 2015 Charolais Group BREEDPLAN																
	CE	CE	GL	BW	200	400	600	MC	Milk	SS	DC	CWE	EMA	Rib	Rump	RBY	IMF
EBV																	
Acc																	
\$IndexValues: N/A				Supermarket: N/A			Grass Fed Steer: N/A			Grain Fed Steer: N/A			EU: N/A				

Wtkg Scrcm Rib/P8Fatmm/.....mm Dent EMAcm² IMF% DamCalvesYears

Comments: Full French.

Purchaser Price \$

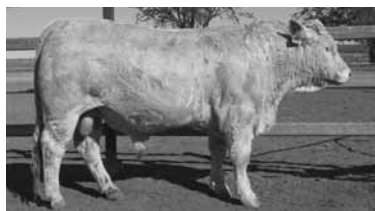
Lot 125**KILKENNY H209E****Reg** Herd Bull**ID** H209E**DOB** 24/12/2012**SIRE** GUNNADOO CHAINSAW C160E**DAM** KILKENNY Z41E

July 2015 Charolais Group BREEDPLAN																	
	CE	CE	GL	BW	200	400	600	MC	Milk	SS	DC	CWE	EMA	Rib	Rump	RBY	IMF
EBV																	
Acc																	
\$IndexValues: N/A			Supermarket: N/A			Grass Fed Steer: N/A			Grain Fed Steer: N/A			EU: N/A					

Wtkg Scrcm Rib/P8Fatmm/.....mm Dent EMAcm² IMF% DamCalvesYears

Comments: Aust Pure.

Purchaser Price \$

Lot 126**KILKENNY H30E****Reg** Herd Bull**ID** H30E**DOB** 17/12/2012**SIRE** AYR RELIEF'S ELDER D365F**DAM** KILKENNY X91E

July 2015 Charolais Group BREEDPLAN																	
	CE	CE	GL	BW	200	400	600	MC	Milk	SS	DC	CWE	EMA	Rib	Rump	RBY	IMF
EBV																	
Acc																	
\$IndexValues: N/A				Supermarket: N/A			GrassFedSteer: N/A				GrainFedSteer: N/A				EU: N/A		

Wtkg Scrcm Rib/P8Fatmm/.....mm Dent EMAcm² IMF% DamCalvesYears

Comments: Aust Pure.

Purchaser Price \$

Lot 127**KILKENNY H176F****Reg** Herd Bull**ID** H176F**DOB** 28/12/2012**SIRE** ANC DIGBY D216F**DAM** KILKENNY Y70F

	July 2015 Charolais Group BREEDPLAN																
	CE	CE	GL	BW	200	400	600	MC	Milk	SS	DC	CWE	EMA	Rib	Rump	RBY	IMF
EBV																	
Acc																	
\$IndexValues: N/A			Supermarket: N/A			Grass Fed Steer: N/A			Grain Fed Steer: N/A			EU: N/A					

Wtkg Scrcm Rib/P8Fatmm/.....mm Dent EMAcm² IMF% DamCalvesYears

Comments: Full French.

Purchaser Price \$

BLUE DOG SIMMENTAL STUD

Blue Dog Simmentals was established out of a need in 2005 to make our breeding and fattening enterprise a viable business.

Not being able to find the type of bulls we required, we decided to breed our own bulls from strong cow lines.

This led to the beginning of Blue Dog Simmentals and to this day our excitement is still there in being able to produce the right product and sell this product to other likeminded commercial breeders.

In the 10 short years since our establishment we have achieved many milestones, winning this year's Champion Overall pen of store steers at the Biggenden Store Show and Sale with a pen of ten Simbrah steers, 2014 equal top priced (\$10,000) Rocky All Breeds sale. A first for Simmentals, our sale average at All Breeds was just under \$6,000. Also 2014 saw Blue Dog Hunter win the Super Bull at the Taroom Show, Hunter then went on to win Senior Bull at Farm Fest.

In 2012 we won Supreme Simmental Bull at Sydney Royal Show, this bull sold for \$15,000 into a commercial herd.

We have had great success at Brisbane Royal Shows winning all Champion trophies at least once and one year winning Junior Heifer, Junior Bull, Supreme Cow and Reserve Senior Bull – an achievement we are very proud of.

While these achievements are great, our focus and our passion is to breed for the commercial breeder. To be able to pass on to them the right genetics to improve better eating quality, more weight gain at an early age, high fertility, temperaments we all dream about, structural correctness and high serving capacity.

With our bulls being sold into most parts of Queensland it is pleasing to hear that our bulls hold their condition even in the driest of times and that everyone is really happy with their offspring.

JAN & DOUG BRADSHAW

Telephone 07 4627 8133 | 0438 278 106

Red Range, Wandoan Qld 4419

bluedogsimmentals@bigpond.com

Lot 128

BLUE DOG J 756

Reg

ID DOGPJ756

DOB 24/09/2013

SIRE BOKARA XENOPHON
BLUE DOG CHARLIE (P)
BOOLAROO VERONICA (P)

DAM WOONALLEE BOAST (P)
BLUE DOG ALPHA E270 (P)
BOOLAROO W413

July 2015 Simmental Trans Tasman GROUP BREEDPLAN

	CE	CE	GL	BW	200	400	600	MC	Milk	SS	DC	CWE	EMA	Rib	Rump	RBY	IMF
EBV				-1.4													
Acc				72%													
\$ INDEX VALUES				Domestic Maternal: +\$19			Export Maternal: +\$22			Northern Terminal: +\$9			Vealer Terminal: +\$18				

Wtkg Scrcm Rib/P8Fatmm/.....mm Dent EMAcm² IMF% Dam 4 Calves 6 Years

Comments: We like this bull. His sire has been used a lot in our stud and the cow line is very strong as well.

Purchaser

Price \$

Lot 129**BLUE DOG J001****Reg** HERD BULL**ID** J001**DOB** 30/09/2013**SIRE** MELDON PARK FIREBALL**DAM** YARRAYNE BO

July 2015 Simmental Trans Tasman GROUP BREEDPLAN																	
	CE	CE	GL	BW	200	400	600	MC	Milk	SS	DC	CWE	EMA	Rib	Rump	RBY	IMF
EBV																	
Acc																	
\$ INDEX VALUES			Domestic Maternal: N/A				Export Maternal: N/A			Northern Terminal: N/A			Vealer Terminal: N/A				

Wtkg Scrcm Rib/P8Fatmm/.....mm Dent EMAcm² IMF% DamCalvesYears

Comments: This bull is out of a cow we bought last year ... he was a calf-at-foot.

Purchaser Price \$

Lot 130**BLUE DOG J770****Reg** HERD BULL**ID** J770**DOB** 25/12/2013

SIRE BOKARA XENOPHON
BLUE DOG COND
BREWERS MISKHA 7151

DAM WOONALLEE BOAST
BLUE DOG PG546

July 2015 Simmental Trans Tasman GROUP BREEDPLAN																	
	CE	CE	GL	BW	200	400	600	MC	Milk	SS	DC	CWE	EMA	Rib	Rump	RBY	IMF
EBV																	
Acc																	
\$ INDEX VALUES			Domestic Maternal: N/A				Export Maternal: N/A				Northern Terminal: N/A			Vealer Terminal: N/A			

Wtkg Scrcm Rib/P8Fatmm/.....mm Dent EMAcm² IMF% DamCalvesYears

Comments: Only 21 months old.

Purchaser Price \$

Lot 131**BLUE DOG KEL****Reg****ID** DOGPK815**DOB** 12/02/2014

SIRE BOKARA XENOPHON
BLUE DOG CONDAMINE
BREWERS MISHKA T151 (P)

DAM WOONALLEE BOAST (P)
BLUE DOG VANESSA G571 (P)
BLUE DOG VANESSA C214

July 2015 Simmental Trans Tasman GROUP BREEDPLAN																	
	CE	CE	GL	BW	200	400	600	MC	Milk	SS	DC	CWE	EMA	Rib	Rump	RBY	IMF
EBV	+2.2			+0.1													
Acc	35%			75%													
\$ INDEX VALUES				Domestic Maternal: +\$18			Export Maternal: +\$21			Northern Terminal: +\$11			Vealer Terminal: +\$19				

Wtkg Scrcm Rib/P8Fatmm/.....mm Dent EMAcm² IMF% Dam 2 Calves 4 Years

Comments: The cow line is very strong on both sides of this bull. 19 months old.

Purchaser Price \$

Lot 132**BLUE DOG J769****Reg****ID** DOGPJ769**DOB** 22/12/2013

SIRE BOKARA XENOPHON
BLUE DOG CONDAMINE
BREWERS MISHKA T151 (P)

DAM WOONALLEE BOAST (P)
BLUE DOG HEIDI F436
BLUE DOG HEIDI B111

	July 2015 Simmental Trans Tasman GROUP BREEDPLAN																		
	CE	CE	GL	BW	200	400	600	MC	Milk	SS	DC	CWE	EMA	Rib	Rump	RBY	IMF		
EBV	+3.2			-0.9															
Acc	35%			74%															
\$ INDEX VALUES				Domestic Maternal: +\$18				Export Maternal: +\$21				Northern Terminal: +\$11				Vealer Terminal: +\$19			

Wtkg Scrcm Rib/P8Fatmm/.....mm Dent EMAcm² IMF% Dam 3 Calves 5 Years

Comments: The sire of this bull is a very long bull and his mother is a very deep cow. 21 months old.

Purchaser Price \$

Lot 133**DOGP805****Reg****ID** DOGP805**DOB** 29/01/2014

SIRE BOKARA XENOPHON
BLUE DOG CONDAMINE
BREWERS MISHKA T151 (P)

DAM WOONALLEE BOAST
BLUE DOG PETA 590 (P)
NERO PARK CORALIE

July 2015 Simmental Trans Tasman GROUP BREEDPLAN																	
	CE	CE	GL	BW	200	400	600	MC	Milk	SS	DC	CWE	EMA	Rib	Rump	RBY	IMF
EBV				+1.1													
Acc				73%													
\$ INDEX VALUES				Domestic Maternal: +\$17			Export Maternal: +\$19			Northern Terminal: +\$11			Vealer Terminal: +\$29				

Wtkg Scrcm Rib/P8Fatmm/.....mm Dent EMAcm² IMF% DamCalvesYears

Comments: This bull is only 19 months old.

Purchaser Price \$

Lot 134**BLUE DOG J740 (P)****Reg****ID** DOGPJ740**DOB** 10/08/2013

SIRE BOKARA XENOPHON
BLUE DOG CHARLIE (P)
BOKARA XENOPHON

DAM WOONALLEE BOAST (P)
BLUE DOG VANESSA 0250
BOOLAROO VANESSA (P)

	July 2015 Simmental Trans Tasman GROUP BREEDPLAN																
	CE	CE	GL	BW	200	400	600	MC	Milk	SS	DC	CWE	EMA	Rib	Rump	RBY	IMF
EBV	+3.3	-0.7		-0.9													
Acc	36%	32%		75%													
\$ INDEX VALUES				Domestic Maternal: +\$17			Export Maternal: +\$20			Northern Terminal: +\$9			Vealer Terminal: +\$17				

Wtkg Scrcm Rib/P8Fatmm/.....mm Dent EMAcm² IMF% Dam 4 Calves 6 Years

Comments:

Purchaser Price \$

Lot 135**BLUE DOG J 733****Reg****ID J733****DOB** 31/07/2013

SIRE BOKARA XENOPHON
BLUE DOG CHARLIE
BOOLAROO VERONICA

DAM WOONALLEE BOAST
BLUE DOG DONNA G575
MURRINGSTONE Z113

July 2015 Simmental Trans Tasman GROUP BREEDPLAN

	CE	CE	GL	BW	200	400	600	MC	Milk	SS	DC	CWE	EMA	Rib	Rump	RBY	IMF
EBV																	
Acc																	
\$ INDEX VALUES				Domestic Maternal: ?			Export Maternal: ?			Northern Terminal: ?			Vealer Terminal: ?				

Wtkg **Scr**cm **Rib/P8Fat**mm/.....mm **Dent** **EMA**cm² **IMF**% **Dam**CalvesYears

Comments: The sire and mother of this bull are out of our most-productive lines.

Purchaser

Price \$

BOTTLE TREE BLONDES

Denton and Kay Wilson, with the purchase of 2 cows and a bull, the Stud was originally located at Roma but was relocated to Kilkivan in 2009 after Allan retired and handed the stud to daughter and her husband Michael.

Bottle Tree Blondes have a long list of success with their cattle, both in the stud ring and over the hooks in carcass competitions. Some of our biggest results to date:

Gympie Carcass Challenge Highest Saleable Meat Yield, 80.53%

Callide Dawson Hoof and hook, Most Successful Exhibitor

Beef Australia 2009 Carcass Comp, 1st Pen of Grass Fed Export Chiller Ox

Bull and Cow Champions at Brisbane Royal on Numerous occasions, and the list goes on ...

We pride our selves with breeding animals that meet the market with our cattle regularly grading MSA when put to slaughter. Type, Temperament and weight gains are all things we strive to achieve.

M. R. & K. S. O'NEILL

362 Cinnabar Road,
MS 372, Cinnabar, ia Gympie Qld
5484 1547 / 0447 008 228

Lot 136**BOTTLE TREE JAX (P)****Reg****ID** AC PJ0006**DOB** 09/08/2013

SIRE ZARINA PEGASUS II (P)
ZARINA EBENEZER (P)
ZARINA GINA (D)

DAM BOTTLE TREE ARIAT (H)
BOTTLE TREE DAIN TREE (H)
WILLROY ANGEL (H)



July 2015 Blonde d'Aquitaine GROUP BREEDPLAN

	CE	CE	GL	BW	200	400	600	MC	Milk	SS	DC	CWE	EMA	Rib	Rump	RBY	IMF
EBV																	
Acc																	
\$ INDEX VALUES																	

Wtkg **Scr**cm **Rib/P8Fat**mm/.....mm **Dent** **EMA**cm² **IMF**% **Dam**CalvesYears

Comments: Good growthy bull. Naturally quiet. Well-muscled with good fat cover. Currently doing 3.68kg/day at time of weighing 11/07/2015.

Purchaser

Price \$

Lot 137**BOTTLE TREE JORDAN****Reg****ID** AC 1J0028**DOB** 18/10/2013

WILLROY YAHOO SERIOUS (H)
SIRE BOTTLE TREE FROSTY (H)
 BOTTLE TREE CHARDONNAY (H)

DAM BOTTLE TREE

July 2015 Blonde d'Aquitaine GROUP BREEDPLAN																	
	CE	CE	GL	BW	200	400	600	MC	Milk	SS	DC	CWE	EMA	Rib	Rump	RBY	IMF
EBV																	
Acc																	
\$ INDEX VALUES																	

Wtkg Scrcm Rib/P8Fatmm/.....mm Dent EMAcm² IMF% DamCalvesYears

Comments: Nice, soft young bull, with good weight for age. Naturally quiet. This fella will put meat on any breed. Currently doing 2.44kg/day at time of weighing 11/07/2015.

Purchaser Price \$

Lot 138**BOTTLE TREE KOBI****Unreg****ID** AC 0K0005**DOB** 02/02/2014

WILLROY YAHOO SERIOUS (H)
SIRE BOTTLE TREE FROSTY (H)
 BOTTLE TREE CHARDONNAY (H)

DAM BOTTLE TREE

July 2015 Blonde d'Aquitaine GROUP BREEDPLAN																			
	CE	CE	GL	BW	200	400	600	MC	Milk	SS	DC	CWE	EMA	Rib	Rump	RBY	IMF		
EBV																			
Acc																			
\$ INDEX VALUES																			

Wtkg Scrcm Rib/P8Fatmm/.....mm Dent EMAcm² IMF% DamCalvesYears

Comments: The youngest of our bulls offered. Quiet, well-muscled but still soft. Shows the soft muscle of a Brahman but with the extra from the Blonde. Currently doing 2.94kg/day at time of weighing 11/07/2015.

Purchaser Price \$

LIVESTOCK AUCTION TERMS AND CONDITIONS OF SALE

These are recommended conditions of sale.

They are provided to ALPA members as recommended terms and conditions only.

© AUGUST 2013 Australian Livestock & Property Agents Association Limited All rights reserved.

CHAPTER ONE – PRELIMINARY

1. (a) A vendor is bound by these terms and conditions by offering livestock for sale by auction.
(b) An agent (which includes an auctioneer) is bound by these terms and conditions by conducting an auction sale.
(c) A buyer is bound by these terms and conditions by bidding at auction.
2. (a) In these terms the expression auctioneer, agent, buyer and vendor respectively includes the servants, contractors, agents of each of them. The auctioneer, agent, buyer and vendor shall be wholly responsible for the acts and omissions of their respective servants, contractors and agents. The term "auctioneer" includes, so far as the law and context permits, the vendor's agent.
(b) When used in these terms the expressions "companion animals" means all animals originating from the same property on a particular day. Where lots are split and sent to multiple establishments, then all of these animals shall be regarded as companions.
3. The following applies in interpreting these terms and conditions:
(a) The following words have the following meanings:
Fees means all levies, charges, fees, costs and other expenses incurred or relating to these terms and conditions and the sale and purchase of livestock including, without limitation, transaction levies, yard and weigh dues, cartage, advertising and rebates, and whether paid for, or incurred, by the agent;
Livestock means animals auctioned pursuant to these terms and conditions; and
Price means the amount at which the lot has been sold to the buyer referred to in clause 7 of these terms and conditions
(i) plus any Fees and other expenses incurred in relation to the purchase of livestock that are payable by the buyer; and
(ii) plus any GST added in accordance with clause 12.
(b) These terms and conditions are subject to legislation or regulation in the State in which the auction is conducted and in the event of any conflict then the legislation or regulation will prevail. The provisions of these terms and conditions are in addition to, and do not derogate from, the duties and rights of vendors, agents and buyers set out in legislation and regulation in the State in which the auction is conducted.

CHAPTER TWO – STANDARD TERMS OF SALE

4. Subject to any reserve price, and to the right, prior to the fall of the hammer, of the vendor to withdraw any lot without declaring the reserve, the highest bidder shall be the buyer.
5. The auctioneer has the right to bid on behalf of the vendor provided that right is notified prior to the commencement of the sale and is subject to State law.
6. A bid cannot be made or accepted after the fall of the hammer unless, in accordance with clause 8, the auctioneer decides to put the lot up again.
7. The last price called by the auctioneer at the fall of the hammer shall be the amount at which the lot has been sold.
8. In the event of a disputed bid, the auctioneer is the sole arbitrator of the successful bidder or the auctioneer may decide to put the lot up again. The auctioneer's decision is final.
9. The auctioneer may refuse to accept any bid which, in the auctioneer's opinion, is not in the best interest of the vendor and need not give reasons for doing so.
10. A bidder shall be deemed to be a principal unless, prior to bidding, the bidder has given to the auctioneer a copy of written authority to bid for or on behalf of another person.
11. The successful bidder at a livestock auction sale must give to the auctioneer at the fall of the hammer:
(a) the purchaser's name; or
(b) the bid card number which identifies the purchaser; or
(c) the name of the person on whose behalf the successful bid was made; and
(d) the Property Identification Code (known as the "PIC") of destination.
12. The auction shall be conducted on the basis that the bid price shall be exclusive of Goods and Services Tax (GST). GST shall be added after the fall of the hammer for those sales subject to GST.
13. As soon as practicable after the fall of the hammer, the buyer shall if requested by the agent, sign the agreement for sale.
14. If a buyer does not comply with any of these terms and conditions, which includes the requirements of State law, any livestock knocked down to that buyer may be re-sold by public auction or private contract in whatever lots and manner the auctioneer decides. The re-sale may be with or without notice and shall be at the buyer's risk. The buyer is responsible for all loss and expense arising out of a re-sale and is not entitled to any resulting profit.
15. The buyer of livestock must pay the agent the full amount of the purchase price in immediate funds on receipt of a tax invoice. Payment is required prior to delivery unless some other time for payment is specified in a written agreement between the buyer and the auctioneer that was made before the fall of the hammer. If, before delivery, payment has not been made then clauses 20 to 23 apply.
16. No person may bid unless, prior to the commencement of the sale, that person has made arrangements satisfactory to the auctioneer for payment for livestock purchased. If bids in breach of this condition are inadvertently accepted, delivery shall not be given until the purchase

money is paid and any law, rule or practice to the contrary is accordingly negated as far as possible.

17. (a) Cattle sold on a liveweight basis that are weighed pre-sale are at the risk and expense of the buyer upon the fall of the hammer.
(b) Cattle sold on a liveweight basis that are weighed post-sale are at the risk and expense of the buyer immediately after weighing.
(c) All livestock other than cattle sold on a liveweight basis are at the risk and expense of the buyer upon the fall of the hammer.
18. (a) Subject to this clause the sale is complete on the fall of the hammer.
(b) The time for rejection is the time commencing at the fall of the hammer and ending at the first of:
(i) delivery is taken by a representative of the buyer;
(ii) departure of the animal from the purchaser's delivery pen; or
(iii) one hour after the last animal is:
a. in the case of pre-sale weighing, sold; or
b. in the case of post-sale weighing, weighed.
(c) During the time for rejection the buyer may reject any animal which is lame, blind or diseased where that condition existed prior to the fall of the hammer but could not be reasonably observed when the animal was in the selling pen.
(d) If the purchaser rejects an animal during the time for rejection then the sale of that animal is cancelled and the animal is returned to the vendor or sold on such terms as any buyer and the agent may agree, after the agent has disclosed the reason for rejection to that buyer.
(e) This sub-clause applies only to cattle which are sold in Queensland at auction for slaughter. The agent has responsibility for the prevention of loss or escape (but not death, sickness or injury) of those cattle from the time of the fall of the hammer, through delivery to and from the scales, to the buyer's delivery pen and on to the buyer's nominated transport. This responsibility ends at the earlier of those cattle boarding the buyer's nominated transport or sunset on the day after the sale. This sub-clause does not apply if the agent makes an announcement to that effect prior to sale.
19. (a) Subject to the right of rejection in Clause 18, all conditions and warranties expressed or implied by law are hereby excluded from the sale to the extent that the law allows. All lots are open for inspection prior to the commencement of the sale and are sold with all faults, if any. No compensation shall be given for any faults, imperfections, errors of description, number in or of any lots sold or otherwise.
(b) Any claim or objection arising out of an error or misdescription in the provision of relevant information in terms of legislation or regulation concerning the National Livestock Identification Scheme (NLIS) must be made by 5:00pm on the seventh day after the fall of the hammer. No objection, requisition or claim against the vendor or agent in respect of such error or misdescription can be made after that time.
(c) Any statements made by the vendor or the auctioneer whether in writing or orally to the effect that any female has been pregnancy tested or scanned positive shall mean and require only that a certificate in writing shall be supplied to the buyer signed by a qualified veterinary surgeon or certified scanner certifying that the said female has been tested or scanned on the date specified in the certificate and that in the opinion of the surgeon or scanner was pregnant on that date.
(d) For slaughter cattle, the agent undertakes to make every reasonable effort to ensure that any NLIS cattle device number is transferred from the saleyard PIC to the purchaser's PIC on the NLIS database no later than midnight on the day of the sale.
(e) For other slaughter livestock the agent undertakes to make every reasonable effort to ensure that the NLIS information is transferred from the saleyard PIC to the purchaser's PIC on the NLIS database no later than midnight on the day of the sale.
(f) Where livestock have a food safety or market eligibility status derived from the National Vendor Declaration (NVD) and/or the NLIS/ERP database, the agent will inform the buyers by presale catalogue and/or announce the status prior to the offering of those lots.
20. If delivery is made to, or possession obtained by, the buyer or its representative before full payment of the Price, then until full payment is received, the buyer:
(a) does not acquire title to the livestock;
(b) holds the livestock as bailee only for the vendor;
(c) must act in a fiduciary capacity in its relationship with the vendor;
(d) must store the stock separately or so that they are readily distinguishable from other livestock owned by the buyer;
(e) is responsible for the safety and well being of the livestock;
(f) may make a bona fide sale for market value of any or all of the livestock. As between the buyer and the subsequent buyer, the sale shall be made by the buyer in its own name and not as agent for the vendor, however as between the vendor and buyer, the sale shall be made as bailee and agent for the vendor; and
(g) must keep and account for the proceeds of any subsequent sale separately from its other money and hold those proceeds, together with the benefits of any rights against subsequent buyers, on trust for the vendor.
21. In addition to clause 20, if payment is not made according to clause 15, but delivery has been made to, or possession obtained by, the buyer or its representative:

TERMS AND CONDITIONS OF SALE (continued)

- (a) The vendor or its agent may repossess and resell the livestock and enter property owned or occupied by the buyer or its representative if necessary to do so; and
- (b) Interest may be charged at the rate usually charged by the agent for overdue accounts on any amounts which remain owing at any time.
22. The buyer may not make any claim against the vendor for actions by the vendor or its agent under clauses 20 or 21 and indemnifies the vendor and its agent against any loss, damage, costs, expenses, penalties, fines or claims suffered by the vendor, the agent or any person or entity arising from the vendor exercising its rights under clauses 20 or 21.
- 23.1. Clause 23 applies whenever the agent pays the vendor before being paid by the buyer, which the agent is not bound to do. The agent is then the del credere agent of the vendor at law.
- 23.2. The vendor hereby gives notice to the buyer of the assignments referred to in clause 23.3.
- 23.3. When this clause applies, in addition to any rights of the agent that arise by operation of the law, the parties agree that, subject to clause 23.6 the agent is subrogated to all rights of the vendor under these terms and conditions against the buyer.
- 23.4. Title to the livestock does not pass to the agent or a nominee of the agent unless the agent, by written notice to the vendor, notifies the vendor that it is to be transferred to the agent or a nominee of the agent.
- 23.5. The vendor acknowledges that the agent may take enforcement, repossession or other action to recover any livestock for which the buyer has not paid in full, or the Price of such livestock, owing by the buyer under these terms and conditions:
- (a) when this clause does not apply, as agent of the vendor (including by reselling the livestock); and
- (b) when this clause applies, on the agent's own behalf exercising the rights of the vendor by subrogation or assignment under these terms and conditions (whether in the vendor's name or not) and, where title to the livestock has not passed to the agent, by selling the livestock as agent of the vendor without the agent having to account to the vendor for the proceeds of sale.
- 23.6. The agent may at any time, assign, transfer, securitise or otherwise dispose of all or any of its rights under these terms and conditions and any debts created pursuant to it (including, without limitation, the rights assigned to it under clause 23.3).
- 23.7. The vendor hereby irrevocably appoints the agent as the vendor's attorney to:
- (a) do at any time and in any manner as the agent thinks fit all acts necessary or desirable to perfect or improve the rights and interests afforded, or intended to be afforded, to the agent under these terms and conditions; and
- (b) appoint one or more sub-attorneys to do anything that the agent may do as the vendor's attorney.
- 23.8. These terms and conditions do not render the agent liable to the buyer as vendor nor entitle the buyer to set off against the agent any right the buyer may have against the vendor or otherwise.
- 23.9. The buyer acknowledges that the provisions of this clause 23 are intended solely for the benefit of the agent (and its assigns) and the vendor. The liabilities and obligations of the buyer will not be in any way affected:
- (a) by this clause 23, other than as it expressly provides; or
- (b) by the failure of the agent or the vendor or either of them to comply with the terms of this clause 23.
- 23.10. The buyer must pay all amounts payable to the vendor or the agent under these terms and conditions without any deduction, withholding, set off or counterclaim whatsoever, whether the benefit of a deduction, withholding, set off or counterclaim is alleged to exist in favour of the buyer as against the vendor or the agent in any capacity whatsoever or any other person including any assignor of the vendor's or the buyer's interests under these terms and conditions.
24. (a) The agent agrees that he is liable to pay to the vendor the Price, less such commission as is agreed between the vendor and the agent, and in the absence of any agreement such amount as is reasonable, and less the Fees that are payable by the vendor that were incurred by the agent on behalf of the vendor in relation to the sale of the livestock.
- (b) In the event that the buyer pays the Price or part of it direct to the vendor then the agent has no liability to the vendor for the amount of such payment. Further, if the agent pays the vendor any amount which the buyer also pays direct to the vendor in respect of the same livestock, then the vendor must repay the agent that amount and the agent may debit that amount to an account held in the name of the vendor by the agent.
- (c) Regardless of whether or not a sale has occurred the agent may, but is not under obligation so to do, instead of deducting payments owed to it by the vendor, debit the amount of the commission and fees to an account held in the name of the vendor by the agent.
25. (a) The auctioneer has been retained by the vendor as auctioneer for the purpose of selling the livestock comprised in the lots. The terms of engagement between the auctioneer and the vendor do not extend to the provision of advice by the auctioneer to the vendor in relation to the safety or otherwise of the sale ring, the saleyards and the surrounding environments.
- (b) The vendor, the agent and the buyer agree to comply with their several duties under the Australian Animal Welfare Standards and Guidelines for the Land Transport of Livestock and further to consign, manage, receive, transport and handle livestock in accordance with any other or additional requirements of animal welfare legislation specific to the jurisdiction in which livestock are consigned, managed, received, transported and handled in the course of the auction process.

CHAPTER THREE – VENDOR WARRANTY FOR CORRECT PRESENTATION AND DECLARATION

26. This chapter applies only in the case of livestock and their companion animals sold at auction for slaughter when the buyer is the slaughterer

and the livestock are transported direct from the sale yard to the meatworks at which they are slaughtered. This chapter does not apply if the buyer is a trader who subsequently resells the livestock to a slaughterer. A slaughterer is any person who pays the AMPC Processor levy.

27. The warranty of a vendor is that livestock and their companion animals offered for sale at auction:
- (a) pass DAFF and other regulatory authority requirements and inspections at the time of slaughter; (DAFF refers to the Federal Government Department of Agriculture, Fisheries and Forestry)
- (b) are of merchantable quality;
- (c) carry an NLIS device in accordance with State law;
- (d) in the case where a representation has been made in the pre-sale catalogue that the livestock have particular characteristics or are fit for a particular purpose or market, and such representations are based on information in the NVD, the livestock will have those characteristics or will be fit for the particular purpose or market; and
- (e) all information in any NVD provided by the vendor is true, complete and correct in all material respects.
28. In the event of a breach by the vendor of the vendor's warranty and provided such breach is notified by the buyer to the agent by 5:00pm on the 7th day after the fall of the hammer then the buyer is not liable to pay the portion of the Price of such of the vendor's livestock to which the breach applies.
29. However if the breach by the vendor is such that the livestock are not rejected outright but are instead downgraded then the buyer will pay the value of the livestock at their next highest and best use.
30. In the case of a breach by the vendor of the vendor's warranty then the vendor will also be liable to the buyer for any further losses which the buyer might establish but the buyer will take all reasonable steps in co-operation with the agent and vendor to mitigate both the effect of the breach and the amount of any loss.
31. Where a sentinel animal of a lot tests positive for chemical residue, or foreign material contamination and provided such test is certified and notified as required by these vendor warranty terms, then:
- (a) the buyer will be entitled to delay payment for the price of all livestock in that lot only; or
- (b) the vendor has the option, at the vendor's cost, of collecting the companion animals, if allowed by law; or of having the livestock slaughtered in which event the risk of further condemnations will be that of the vendor. Where product integrity is potentially jeopardised, the Processor has the right to refuse slaughter and send the livestock back to the consigning property at the vendor's cost.
32. The auctioneer is liable to the buyer in respect of any breach of the vendor's warranty arising out of:
- (a) any error, by the auctioneer, of transcription of information from the NVD completed by the vendor to the pre-sale catalogue or the buyers post-sale summary;
- (b) any failure by the auctioneer to notify the buyer, prior to bidding, of any breach by the vendor of the warranty of the vendor if the buyer establishes that the agent knew of such breach prior to the sale; and
- (c) any failure by the auctioneer to announce prior to bidding, or disclose in the pre-sale catalogue, that the vendor has failed to provide a NVD that is complete in all material aspects.

CHAPTER FOUR – OWNERS RISK FOR CONDITION OF CATTLE

33. This chapter applies only in the case of cattle and their companion animals sold at auction for slaughter when the buyer is the slaughterer and the cattle are transported direct from the sale yard to the meatworks at which they are slaughtered. This chapter does not apply if the buyer is a trader who subsequently resells cattle to a slaughterer. A slaughterer is any person who pays the AMPC Processor levy.
34. Owners risk reflects the producer's responsibility to provide slaughter cattle for sale that are fit for human consumption. Cattle are fit for human consumption if they are not condemned as unfit by DAFF. Owners risk applies if the condemnation is due to a condition in the animal which the buyer establishes, by the DAFF certificate, existed prior to the fall of the hammer.
35. A buyer with the benefit of owners risk protection is not liable to pay the Price of that animal to the vendor. The buyer remains nevertheless liable for all costs incurred after the fall of the hammer in transport, slaughter, testing and disposal of the animal.
36. Owners risk protection is available to the buyer of cattle to which this chapter applies if all of the following are satisfied:
- (a) a certificate is issued by DAFF which states the relevant NLIS RFID tag number and PIC, the date of the certificate, the reason for condemnation and that the reason for condemnation existed prior to the fall of the hammer;
- (b) the certificate is received by the selling agent either in its original form or by fax by 5:00pm on the 7th day after the fall of the hammer; and
- (c) if the condemnation is due to chemical residue the certificate follows testing in a DAFF approved laboratory which establishes maximum residue limits in excess of the Australian limit.
37. Owners risk does not apply, and the buyer must pay for the cattle, if the reason for condemnation is any of the following:
- (a) bruising,
- (b) fever,
- (c) partial condemnation, or
- (d) emaciation.

Thanks

TO ALL BIDDERS AND BUYERS AT THIS YEAR'S SALE,
FROM VENDORS AND AGENTS.

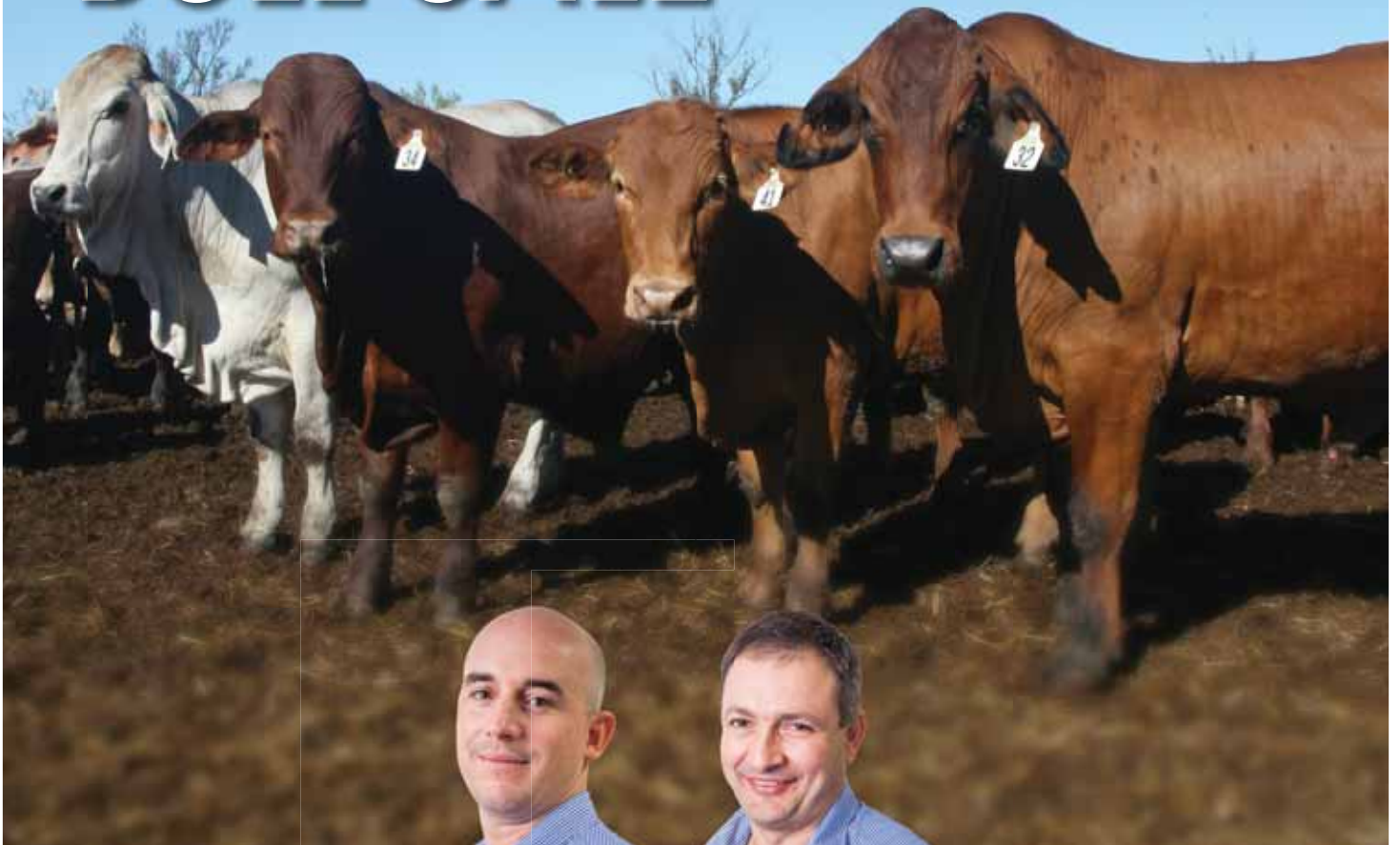
We wish you a safe trip home.

**Our next sale will be
Monday 5th September, 2016**

BALONNE 2015 SALE RESULTS				
BREED	# SOLD	GROSS \$	AVG \$	TOP \$
Angus				
Santa Gertrudis				
Droughtmaster				
Charolais				
Simmental				
Blondes				
TOTAL				

Proudly supporting...

THE BALONNE INVITATIONAL BULL SALE



BRENDAN CROUCH

Area Manager
(Central and Nth Qld)
Phone: 0429 474 767

ANDREW DOLJANIN

Key Account Business
Manager (Qld)
Phone: 0427 003 821



Follow us on Facebook
www.facebook.com/allflexaustralia

Contact our friendly
Customer Service Team

1300 138 247

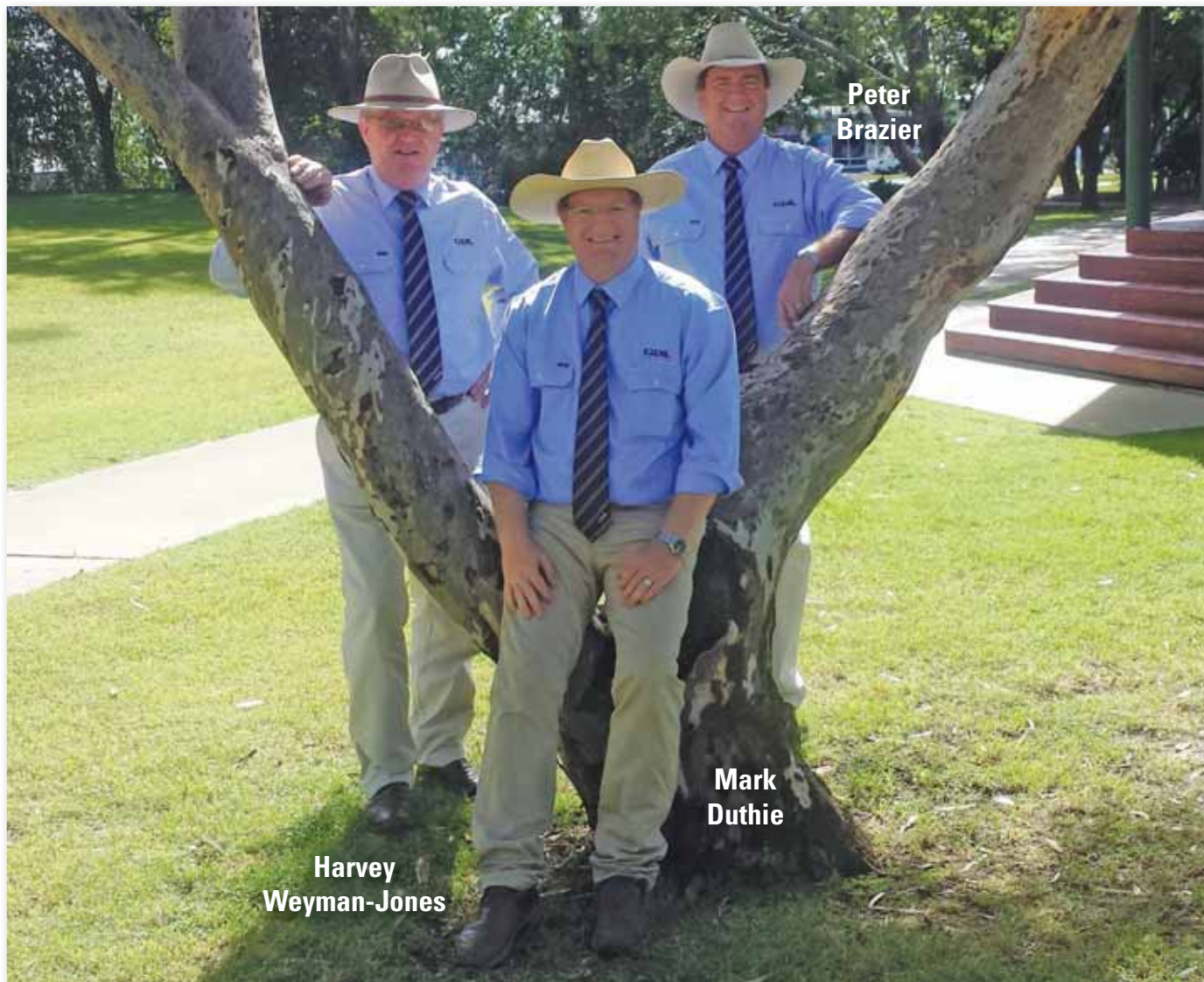
www.allflex.com.au



Identify the Difference

Stud Stock GDL

Do it simply. Do it well.



In 2014, while some saw risk, we saw opportunity. We were fortunate in having Peter Brazier join our team. Harvey, Mark and Peter have the expertise, knowledge and integrity to provide the very best customer service to stud and commercial cattle breeders. We offer stud breeders a fresh and dynamic service to market their genetics. We advise buyers on selecting the best cattle to meet their requirements. **More and more breeders are using us - are you?**

Supported by 15 GDL Branches serviced by a dedicated team of local livestock agents in Blackall, Cunnamulla, Dalby, Goondiwindi, Kingaroy, Longreach, Meandarra, Miles, Mitchell, Moura, Quilpie, Roma, St George, Taroom and Wandoan.

Supported by Ruralco "Our national strength is the best local service" with over 500 outlets across Australia, each operating under it's own brand, with it's own culture, service model and unique value proposition.

Stud Stock GDL... Trait leaders for growth, performance and commitment.



A RURALCO PARTNER

Call us now Stud Stock, Dalby (07) 4669 6955

**Harvey Weyman-Jones 0414 941 788 - Mark Duthie 0448 016 950
Peter Brazier 0407 525 983**