

Q-TEX

www.modular-signs.net

INSTRUCCIONES DE MONTAJE. **NQ2**

CONTENIDO. NQ2

x2

PERFIL CORTO



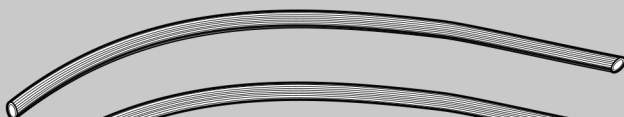
x2

PERFIL LARGO



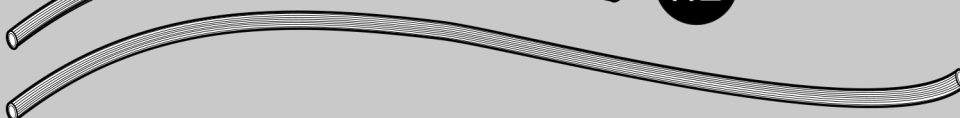
x2

PERFIL CAUCHO CORTO



x2

PERFIL CAUCHO LARGO



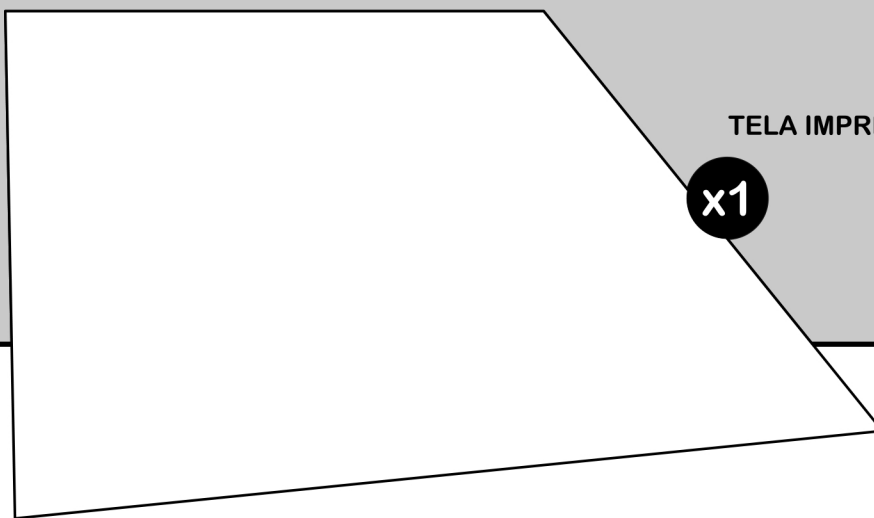
x4

ESCUADRAS

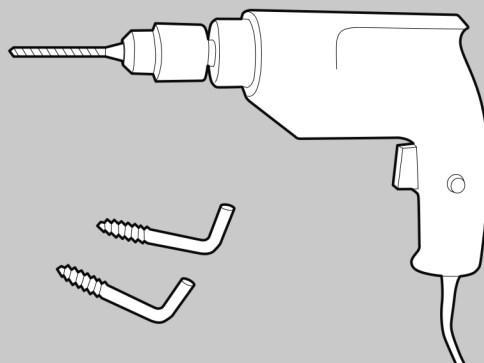
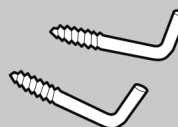
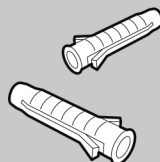
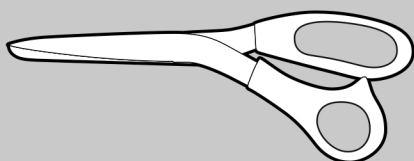


TELA IMPRESA

x1



HERRAMIENTAS NECESARIAS. NQ2

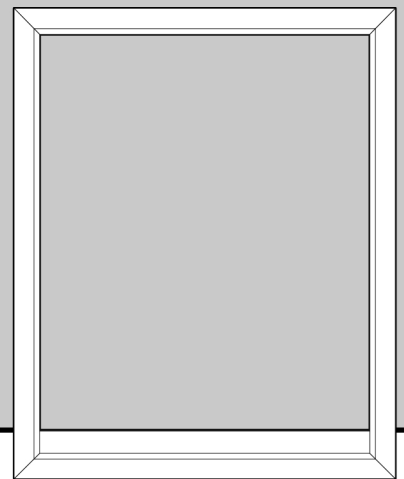
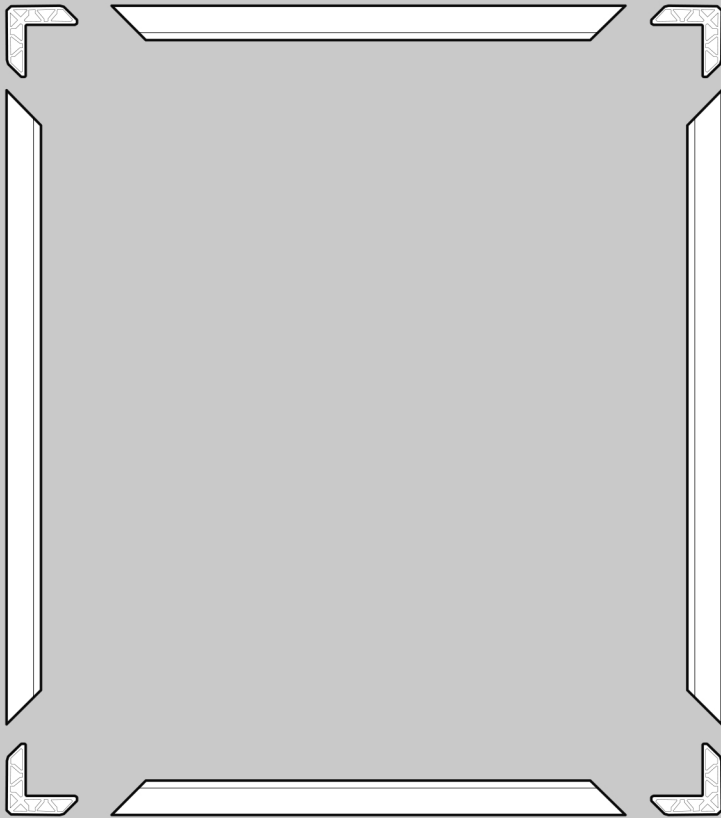


Q-TEX

www.modular-signs.net

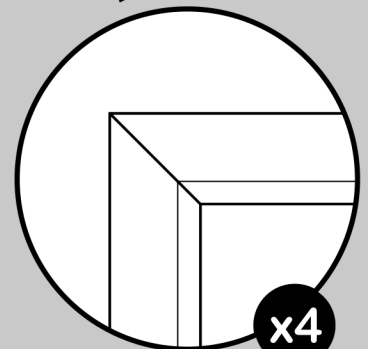
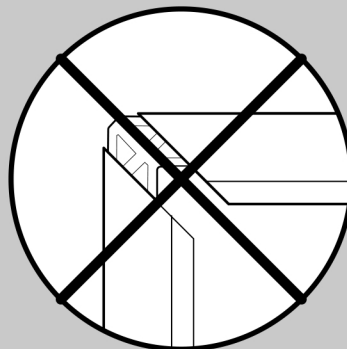
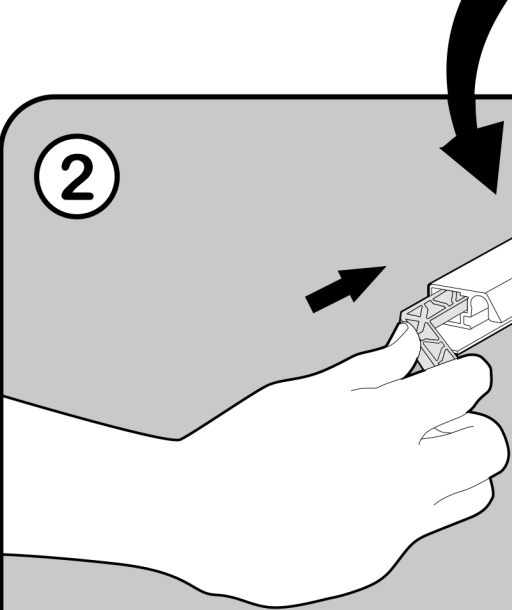
1

1



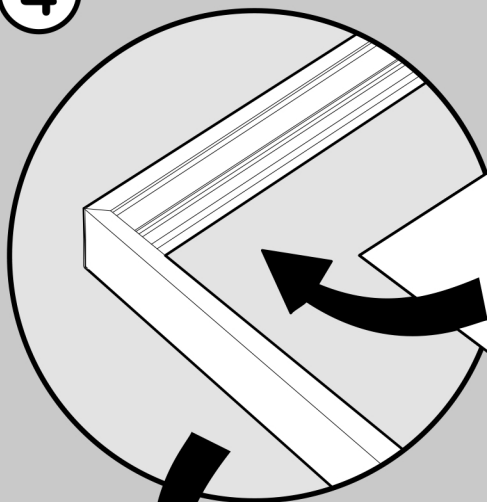
3

2

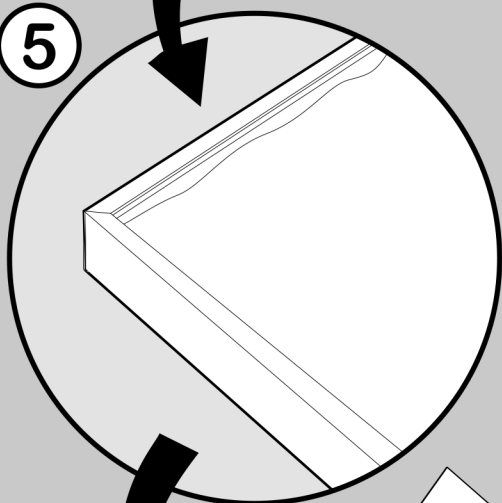


x4

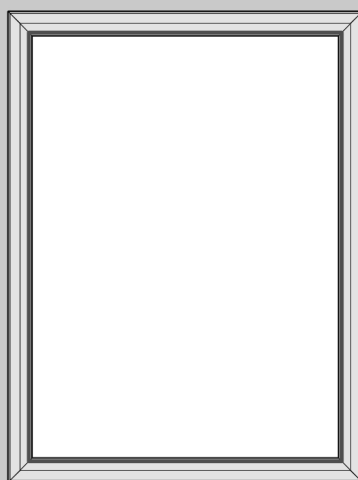
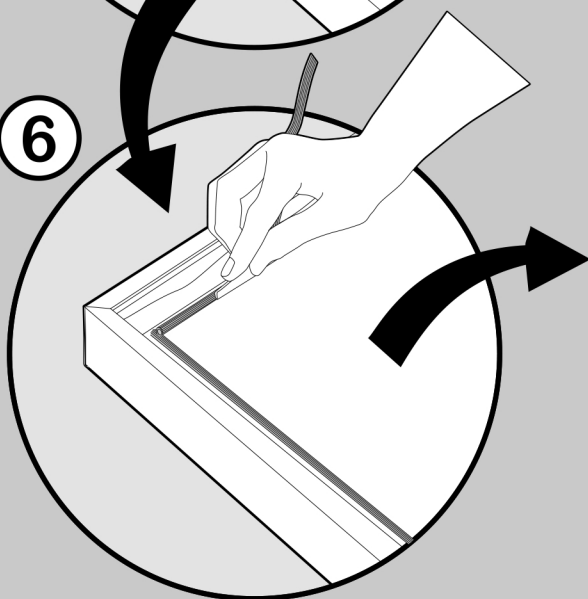
4



5



6



7

Q-TEX

www.modular-signs.net

3

