

**NEW PRODUCT  
RELEASE**

## WATER REFLECTIVE GLASS

Custom laminated glass product

Available in various Reflective colours

CLEAR, BRONZE, GREY, PEACH, BLUE, GOLD, COPPER RED

& COLOUR BACKED

Max size 2140<sup>H</sup> x 1320<sup>W</sup>



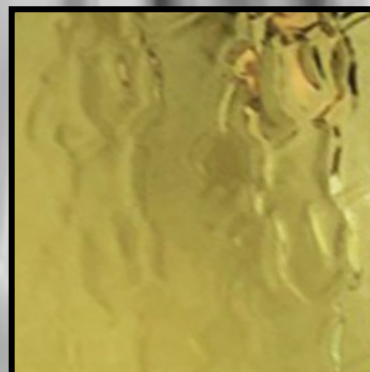
CLEAR WATER REFLECTIVE

9.52mm or 11.52mm



GREY WATER REFLECTIVE

9.52mm or 11.52mm



GOLD WATER REFLECTIVE

10.52mm



BRONZE WATER REFLECTIVE

9.52mm or 11.52mm



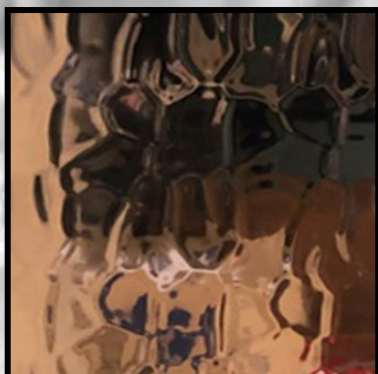
COPPER RED WATER REFLECTIVE

10.52mm



ROYAL BLUE WATER REFLECTIVE

10.52mm



PEACH WATER REFLECTIVE

10.52mm



**Spectrum  
Art Glass**

Inc. John Ashwin & Co  
ABN 19 069 918 716

### Decorative Glass Specialists

- Slumped Textural Glass
- Digital Printed Glass
- Sandblasted Glass & Sealed
- Splashbacks & Colour Backed
- Water Jet Cutting
- Glass Signage & Hardware
- Bent Glass
- Coloured Laminated Glass
- Leaded & Stained Glass
- Antique Mirror

Email: [sales@spectrumartglass.com.au](mailto:sales@spectrumartglass.com.au)

Website: [spectrumartglass.com.au](http://spectrumartglass.com.au)

PH. 02 97370666

This Product is a laminated safety glass to Australian Standards 2080.

The **face panel** can come in **Annealed** glass for cladding, bar mirrors, lifts, feature walls

& if used in wet areas the edges have to be sealed from the moisture.

Also **Toughened** face glass for thermal preposes e.g. Splashbacks

The colour options are created by the reflective rear panel so various types

of **Figured rolled glass** can be used for Decorative applications or **Acid etched glass**

for non reflective requirements. This gives a satin finish to the face.