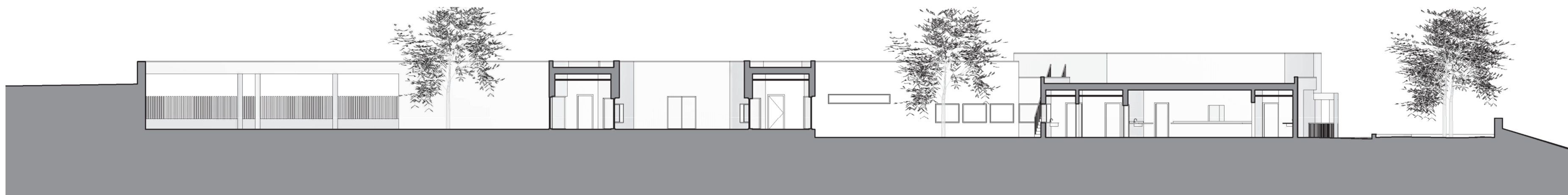


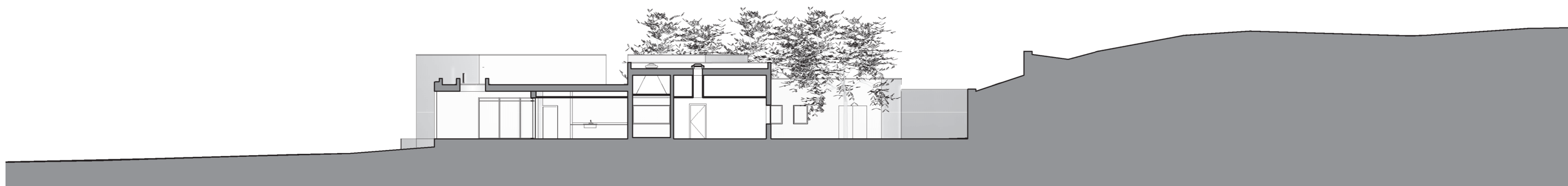
Ground Floor



Longitudinal Section



Transversal Section



Almada Council
Setúbal, Portugal

pages 002 - 003

Ramalha Kindergarten

Achievements:

- Architectural Assistant
- Architecture Initial Study; 3D management and modelling; create families (.RFA) and BIM materials; area schedules; photo realistic renders to simulate ambients; make virtual walkthroughs like a drone.

Project Size:

- 970 sqm Gross Area
- 2.918 sqm Field Area

Client:

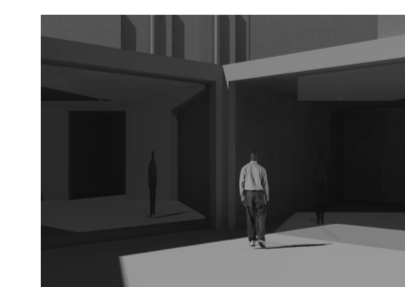
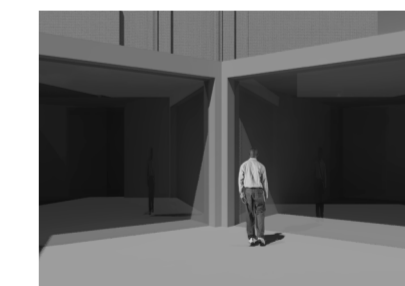
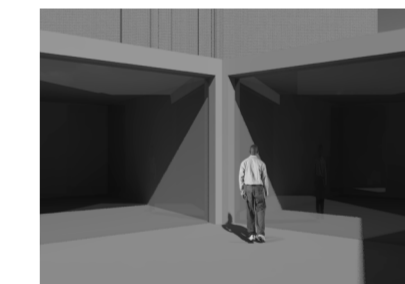
Public Sector

Software:

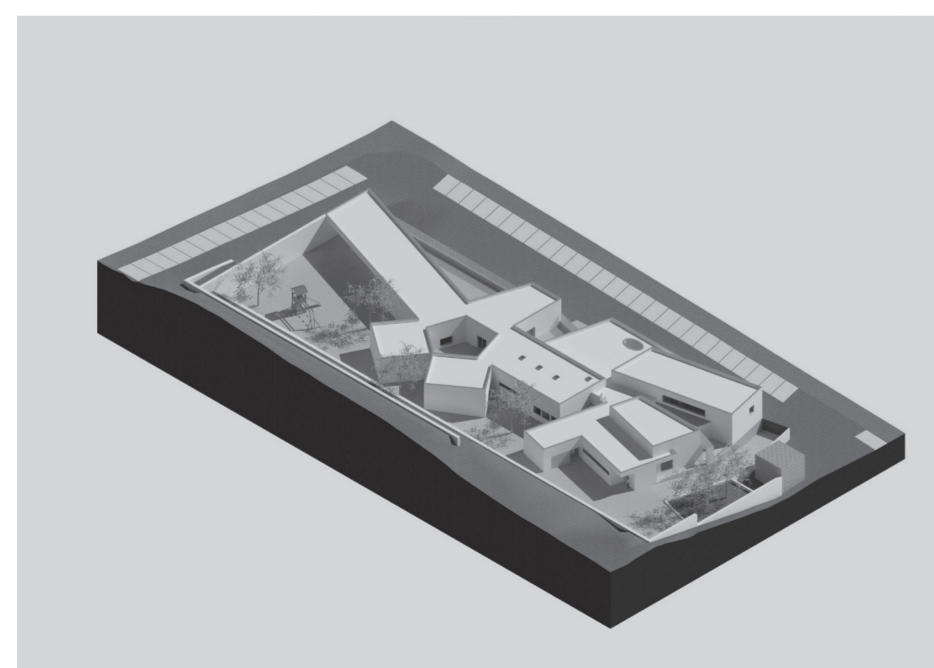
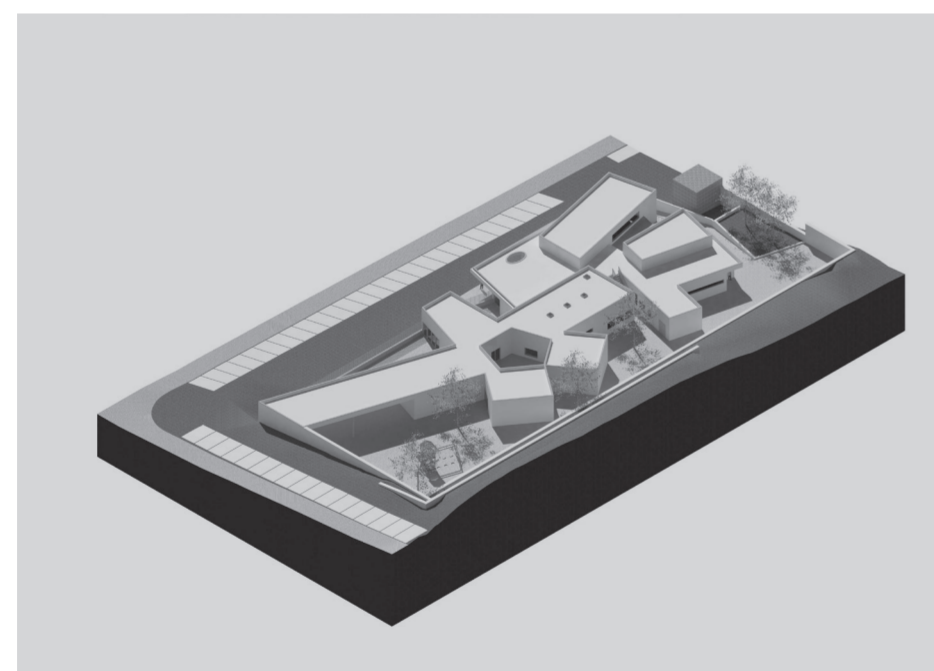
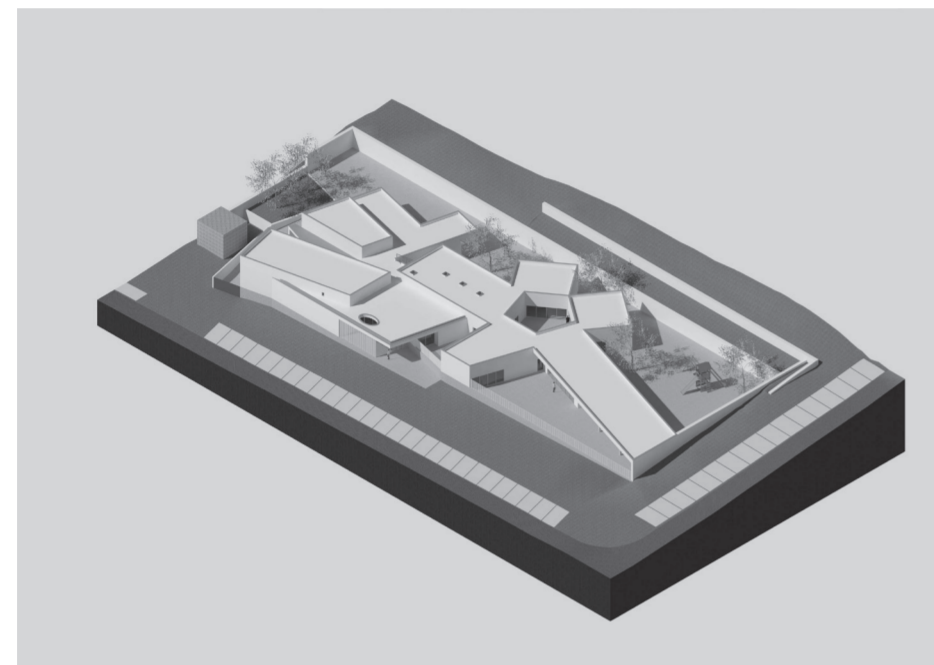
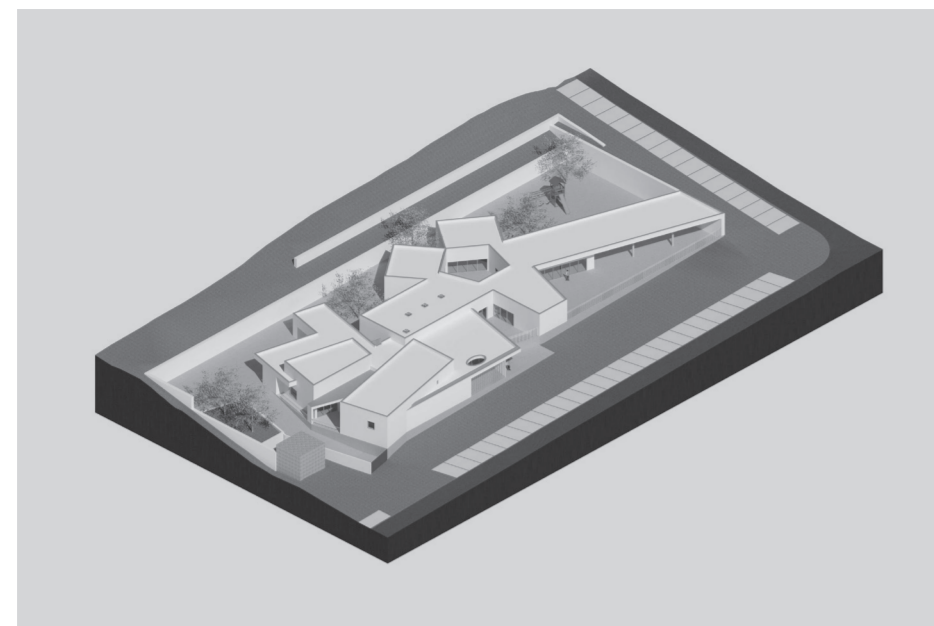
Autodesk Revit

I was nominated to work in collaboration with João Lucas Dias architect in this project; our team have two more great architects who helped us developing our ideas. Beside of that I was BIM Manager of all project and modelled everything, in this phase.

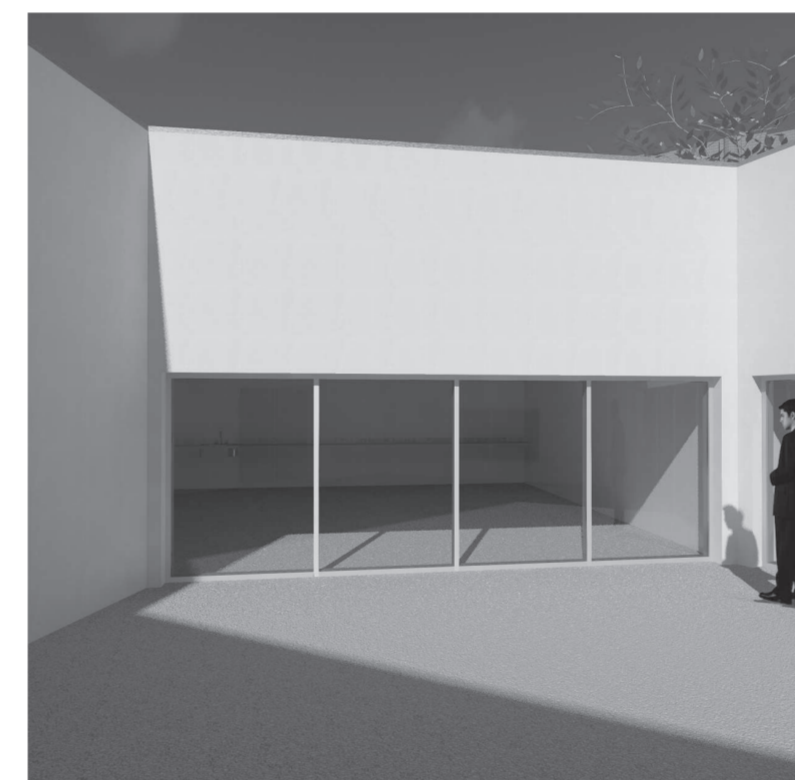
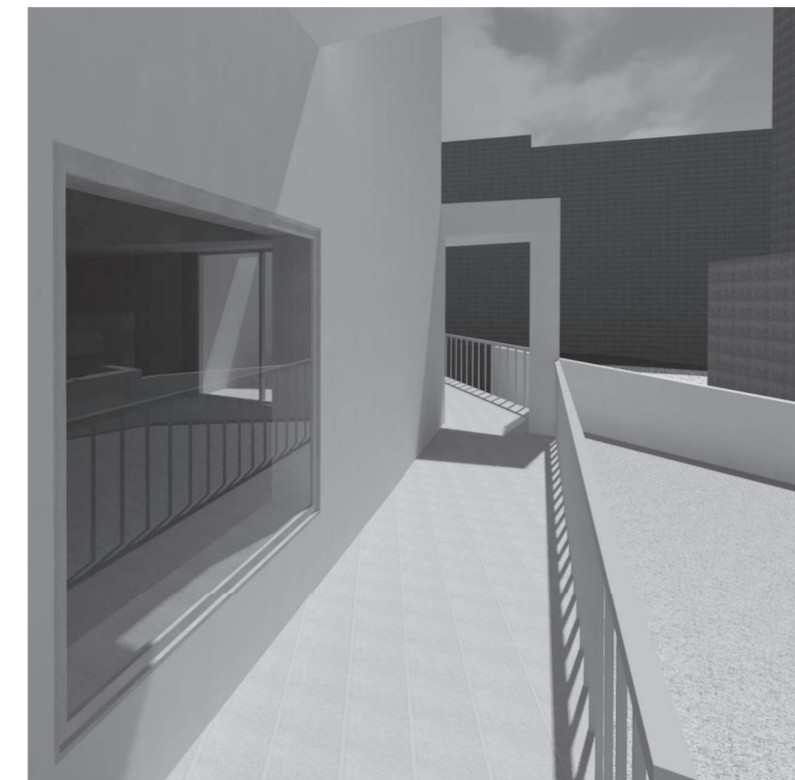
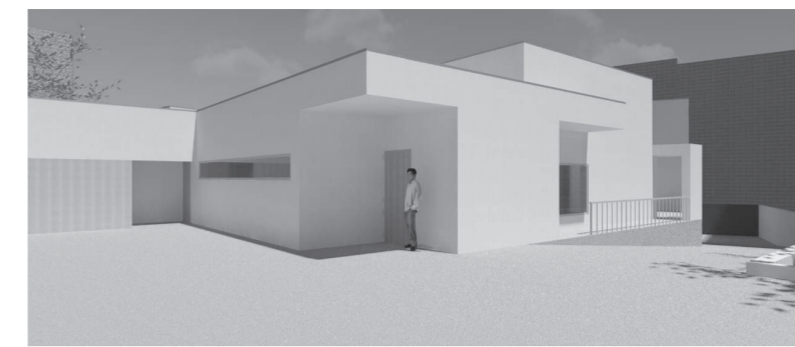
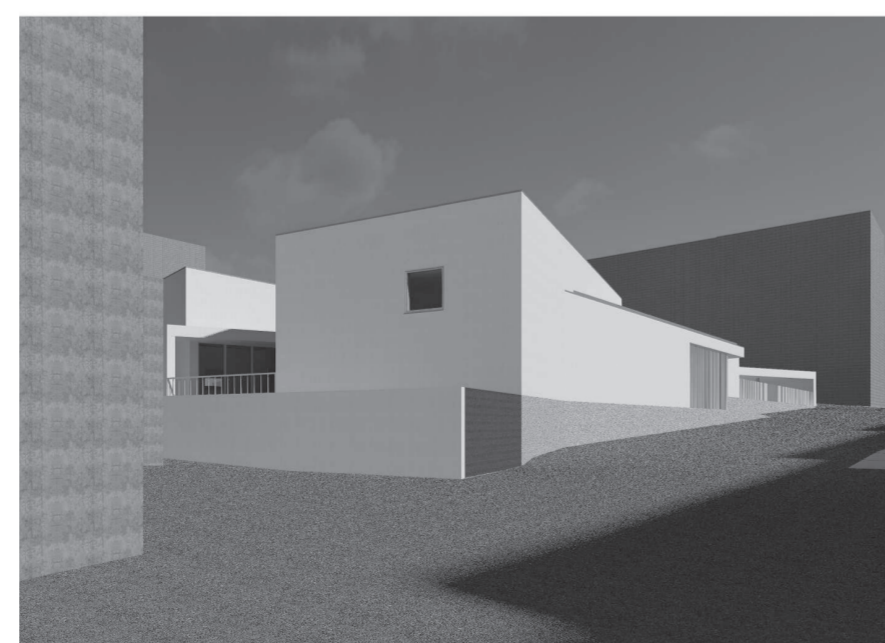
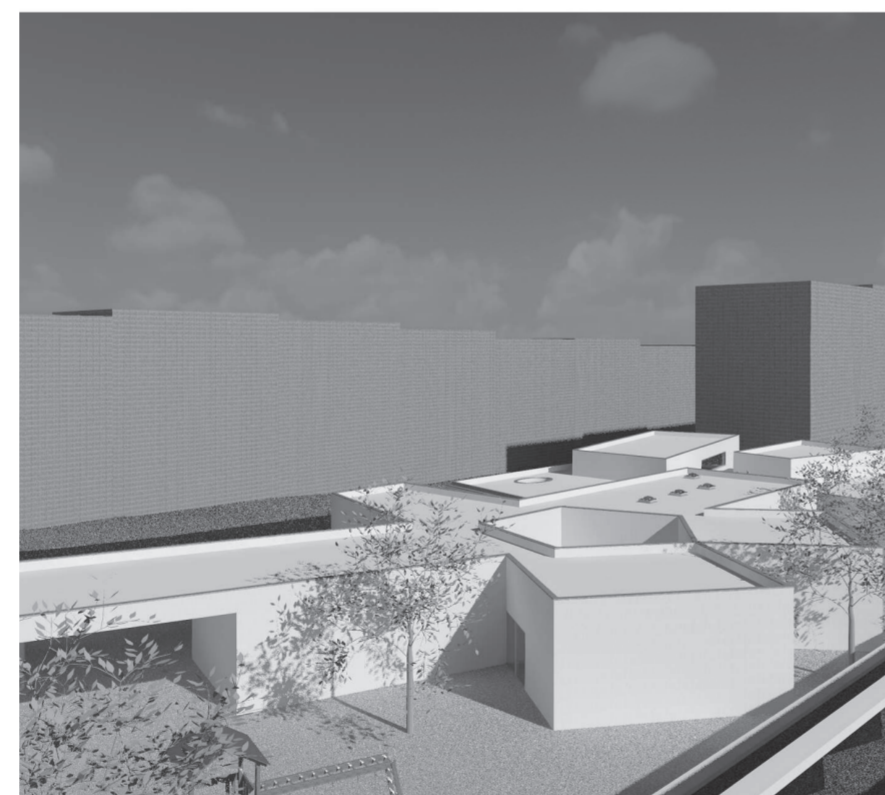
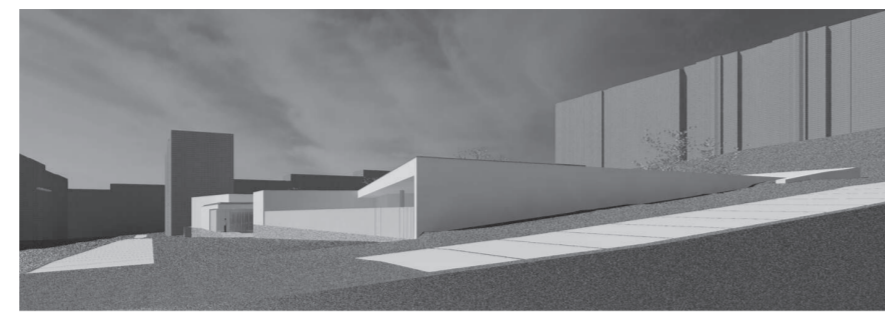
It was required to design a kindergarten with five classrooms in this area. Our approach was to not replicate what have been done in the past and try to create corners each give possibilities to their user, children, to play and make their little stories around the place they spend the majority of time.

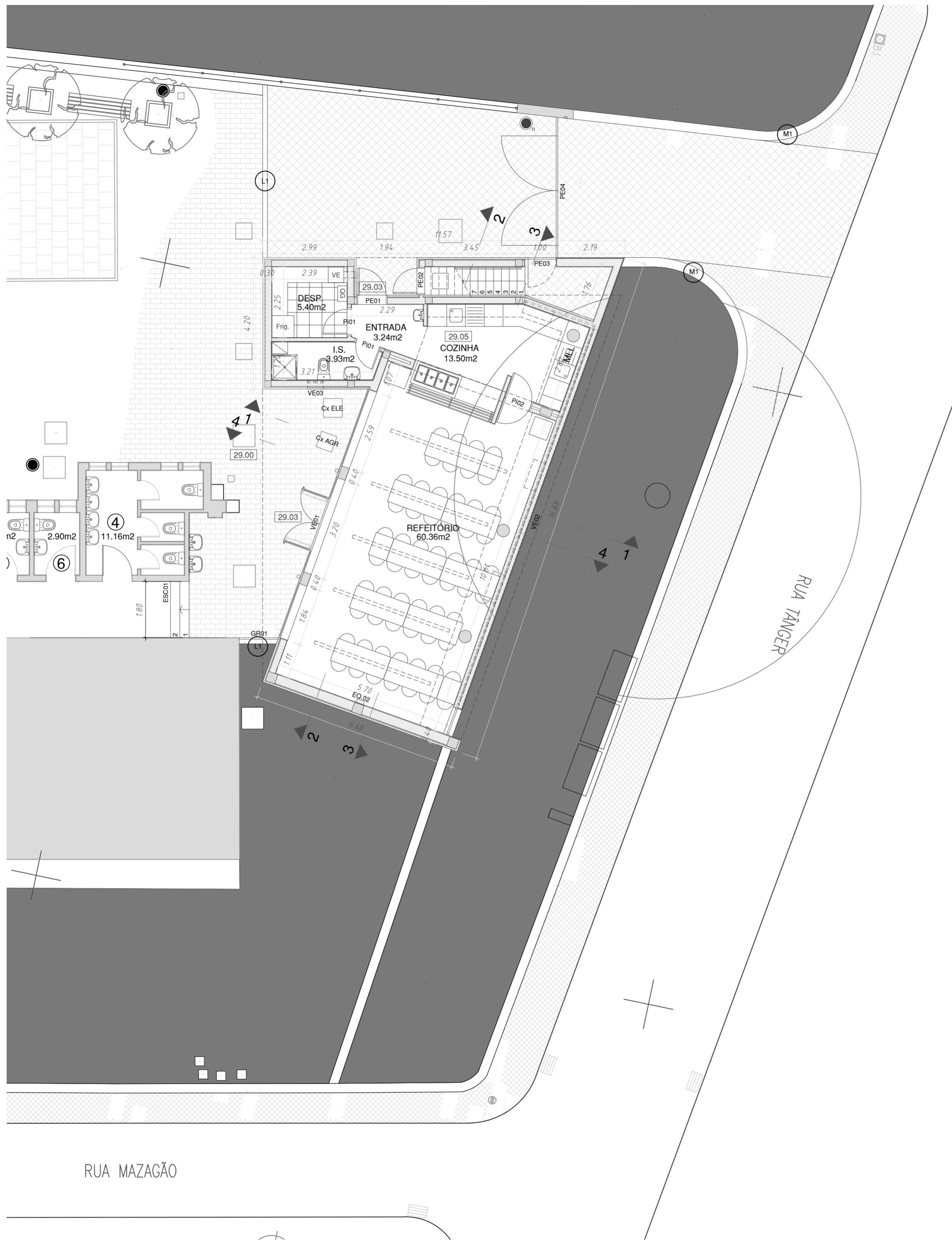


Patio Solar Study

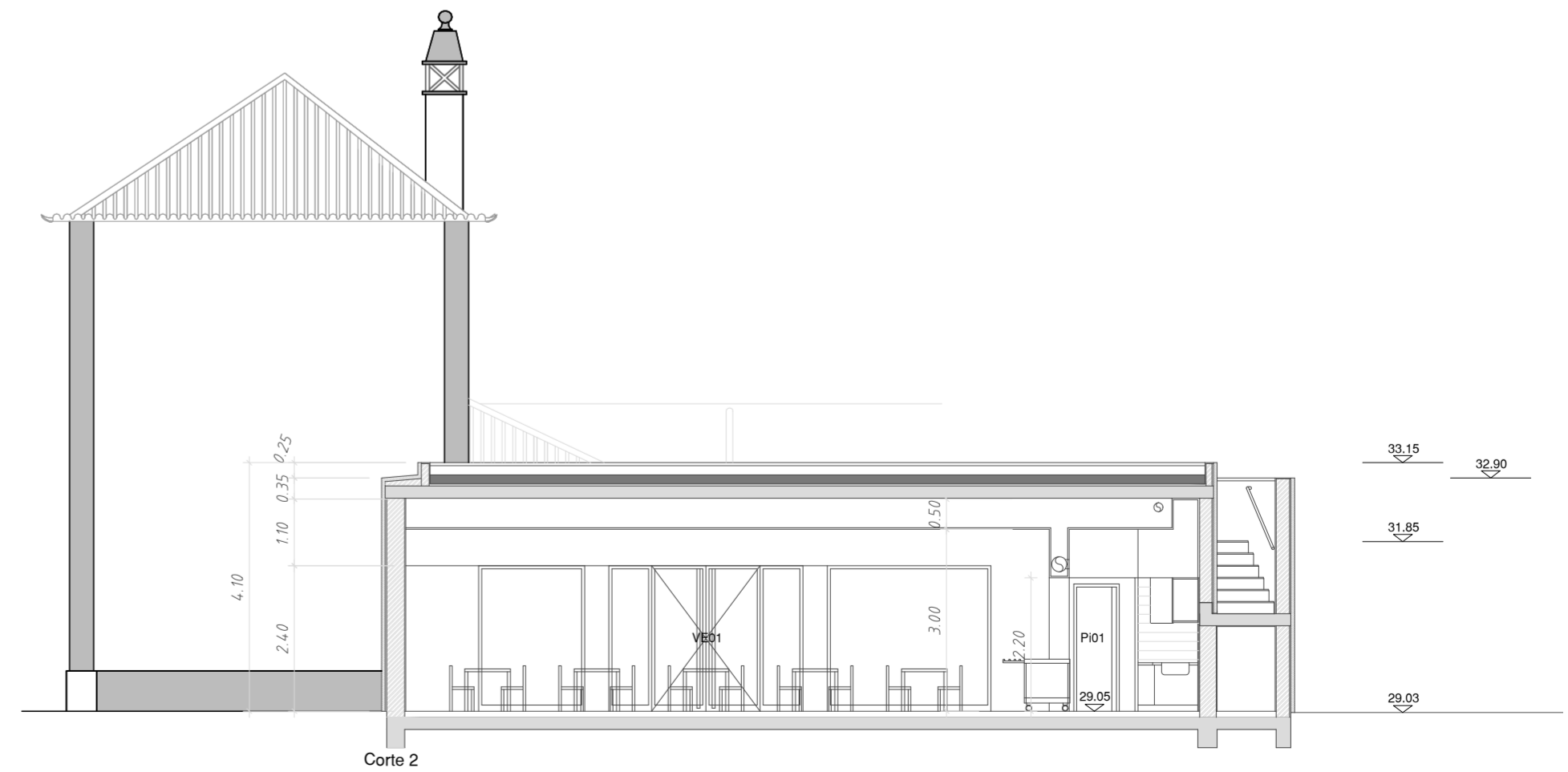
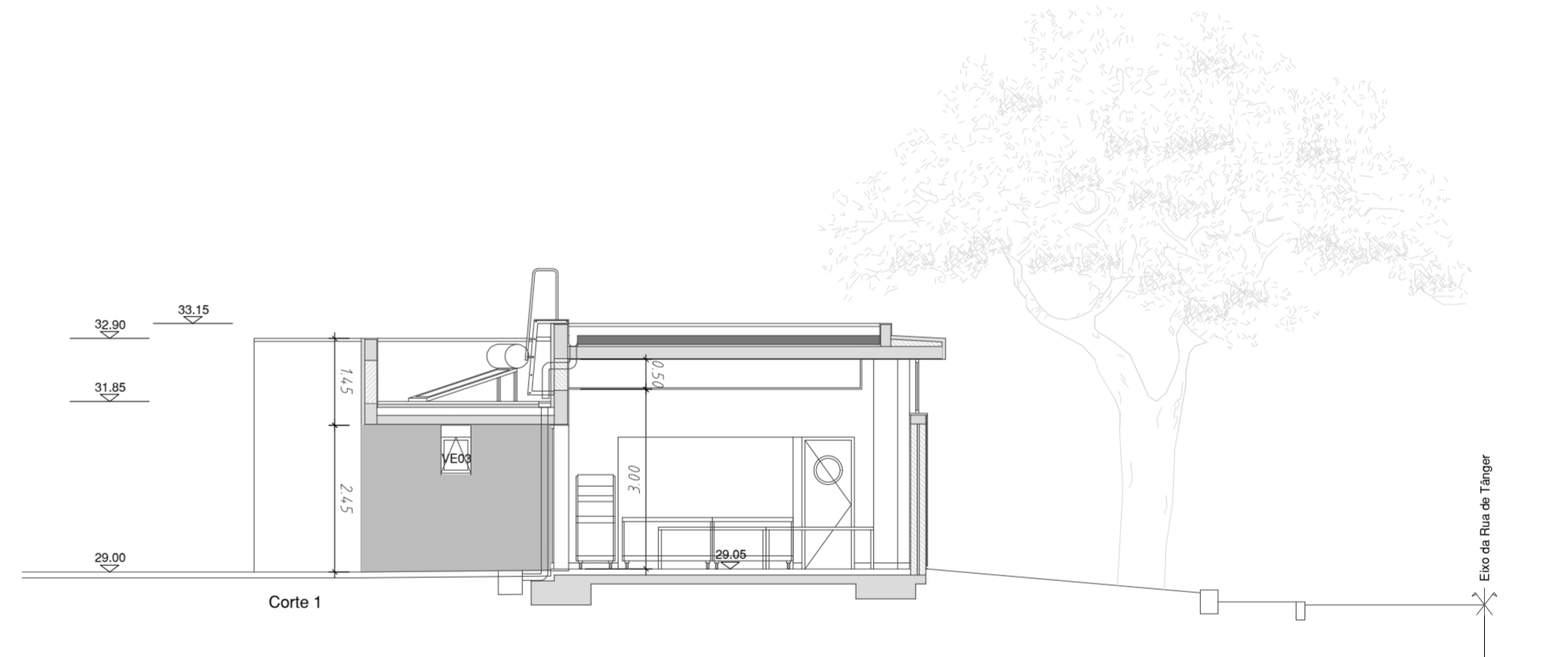


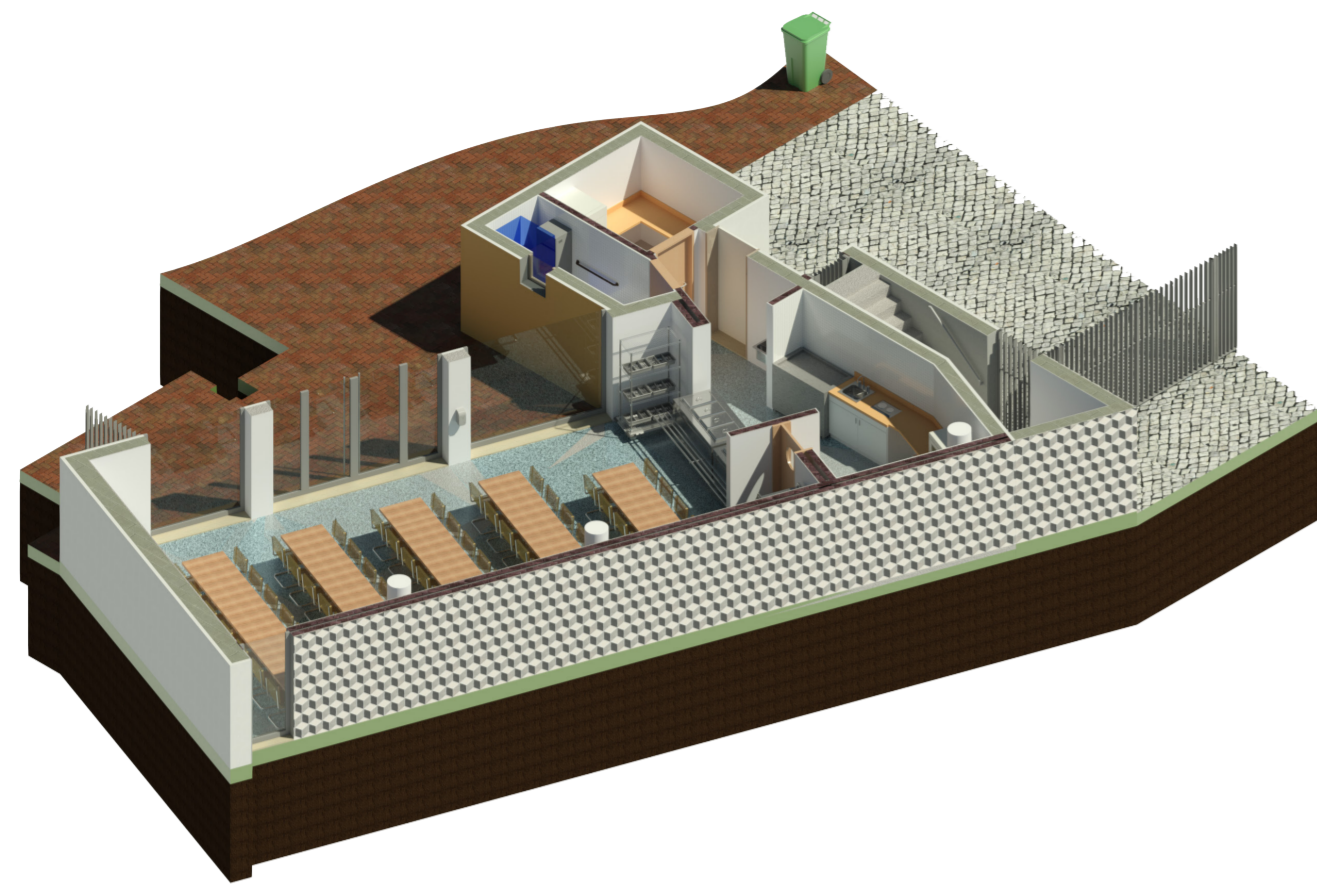
Axonometrics and Perspectives of electronic models





Working with PointClouds





3D Section



Photomontage of the construction work panel

Almada Council
Setúbal, Portugal

pages 004 - 005

BIM Models of Mazagão Canteen

Achievements:

- BIM Manager
- Detail Construction Pack - Construction and Handover
- 3D management and modelling; LOD 400; create families (RFA) and BIM materials; detailed quantity schedules; photo realistic render's to simulate ambients; image edition; construction monitoring; make presentations; 3D printing; work with point clouds; make virtual walkthroughs; clash detection between specialties.

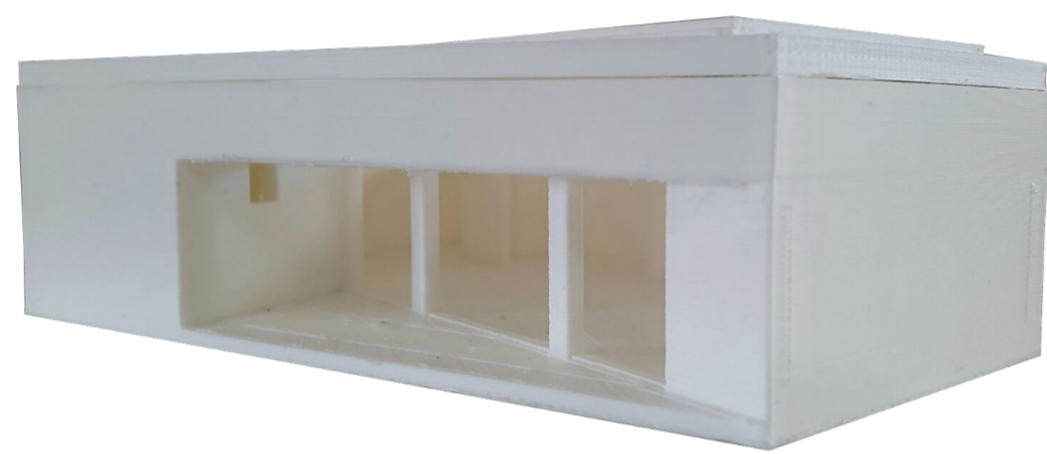
Project Size:
140 sqm

Client:
Public Sector

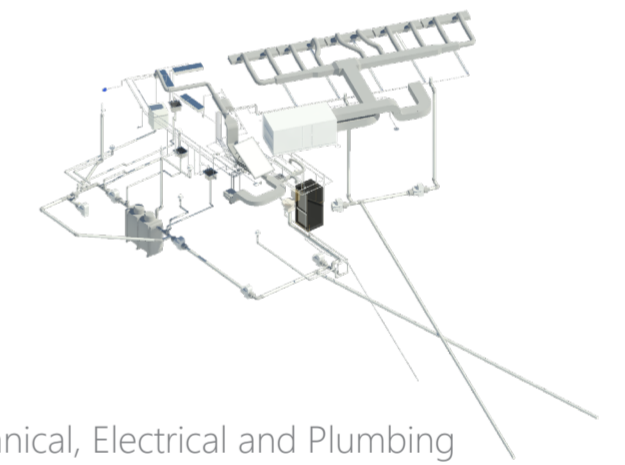
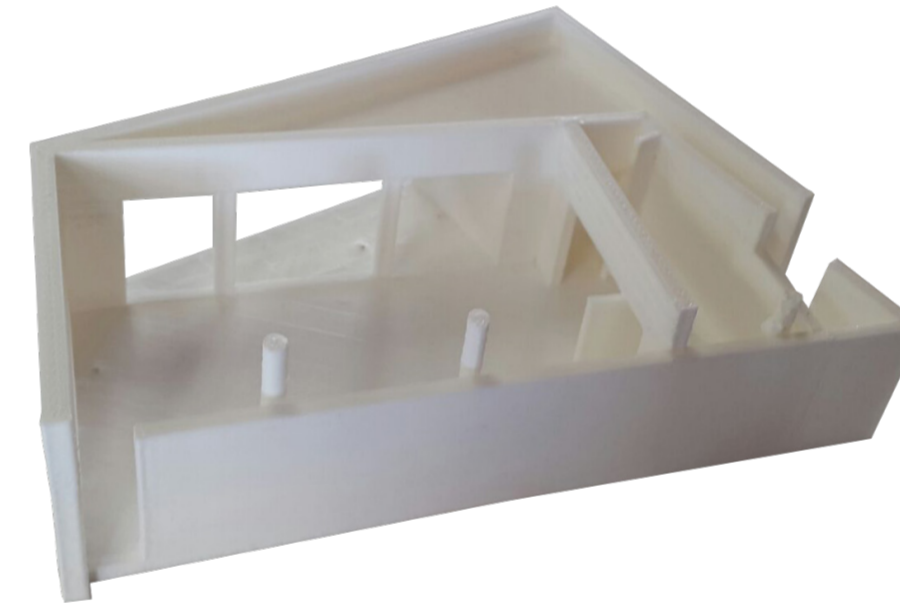
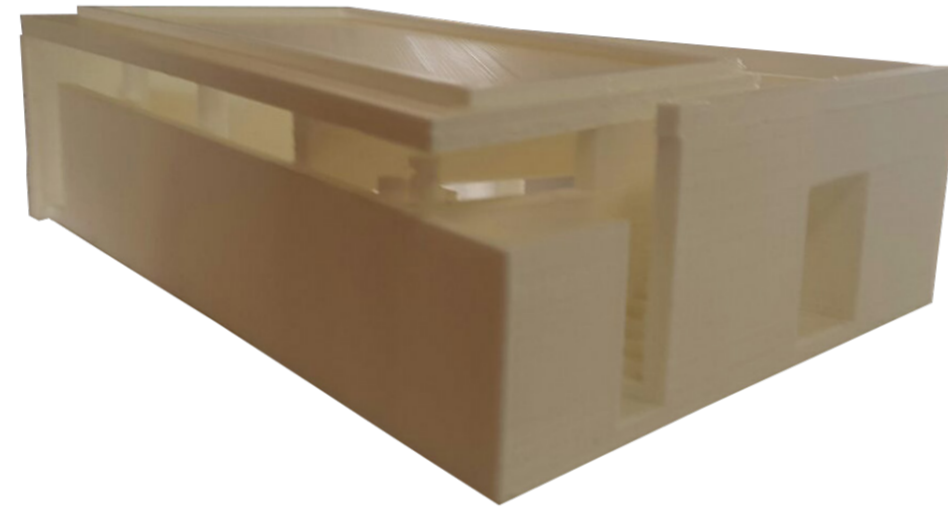
Software:
Autodesk Revit

Pilot project to implement BIM work methodology in the office.

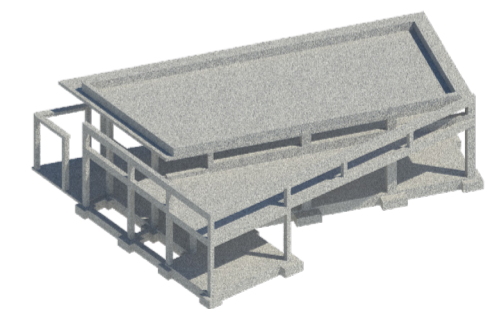
When I arrive the project was almost finished, but with this new tool we could resolve better some technical aspects. As main results the advertising campaign was much reliable and the construction process seemed to be easier, with digital monitoring.



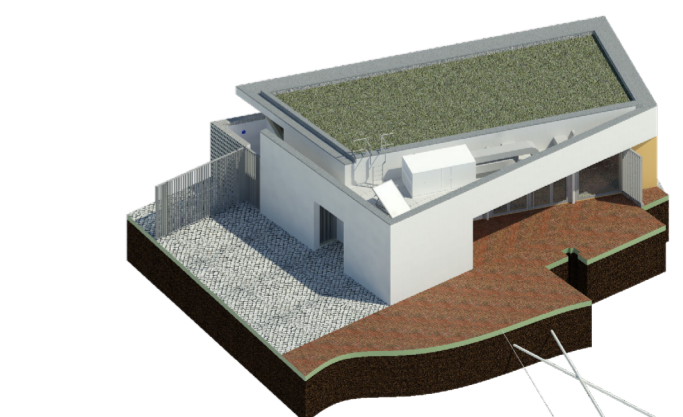
3D Printing Model in PLA



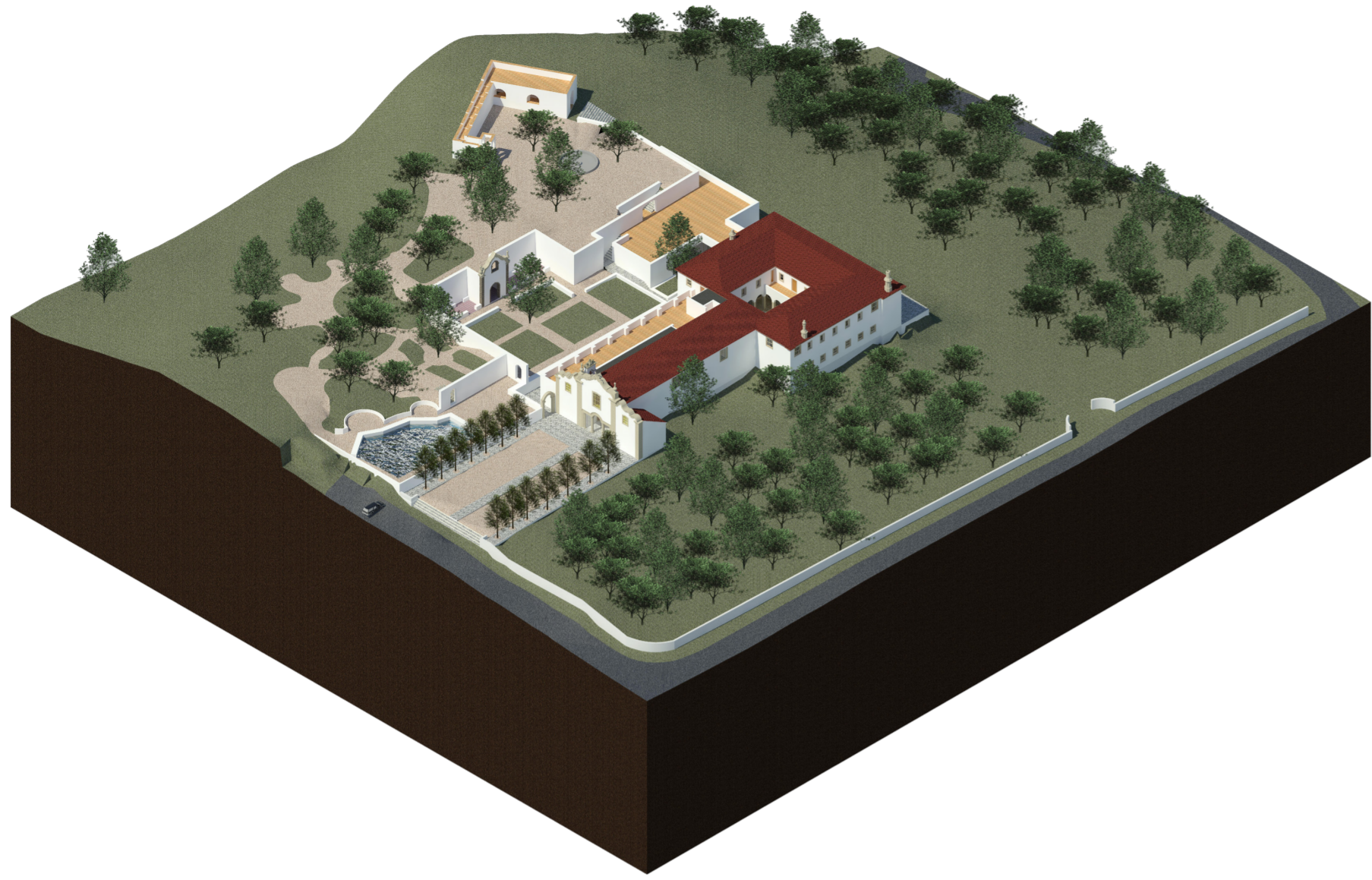
Mechanical, Electrical and Plumbing



Structure



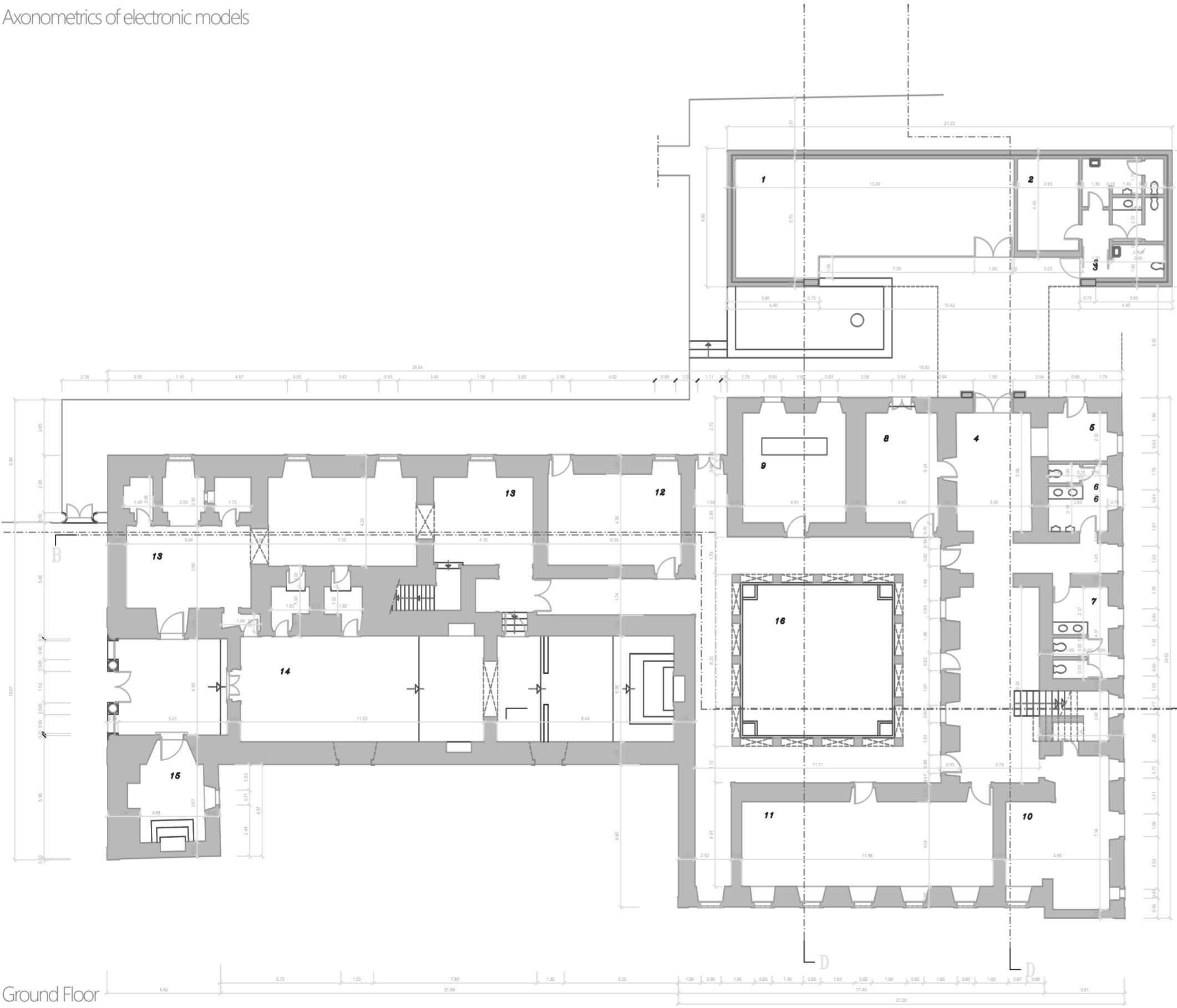
Architecture



Axonometrics of electronic models



Perspective of Monastery and its surroundings



Ground Floor



Transversal Section



Longitudinal Section



Almada Council Setúbal, Portugal

pages 004 - 005

Exploring BIM Models of Capuchos Monastery of Caparica

Achievements:

- Facility Manager
- 3D management and modelling; LOD 400; create families (RFA) and BIM materials; detailed quantity schedules; photo realistic render's to simulate ambients; image edition; make presentations; make both interior and exterior virtual walkthroughs; clash detection between specialties.

Project Size:
1.915 sqm

Client:
Public Sector

Software:
Autodesk Revit

Post Thesis conclusions and resolutions to complete the architectural BIM model already done with other specialties, and gather those electronic important files to future refurbishments or maintenance activities.

The implementation of BIM technology to heritage buildings provides the preservation of their constructive truth as well as the record of interventions and adaptations in the buildings. Moreover, this technology brings the possibility of patrimony disclosure to a wider range of population while preserving the fragility of its construction.



