



PermaTimber®

Eco Cladding Install Guide

Please ensure you follow these instructions carefully when installing your PermaTimber® Eco Cladding.



www.permatimber.com.au

Installation Guidelines

With correct installation, PermaTimber® Eco Cladding will provide years of enjoyment. Please read these instructions before installation and refer to them during.

Thanks to its special combination of reclaimed hardwoods and recycled plastics, PermaTimber® is a long lasting, low maintenance outdoor living product.

PermaTimber® maintains a natural wood look and feel, yet can far outlast all natural timbers with an ability to handle even the toughest of conditions.

PermaTimber® contains natural timber elements. As you would be aware, timber has different natural appearances and to ensure PermaTimber® does look like timber, it may also experience similar variations in colour, tone & grain.

As a result of this Perma Composites® may have natural variations in each decking boards and in some instances slight

variations in colour, tone and grain. The customer/installer is responsible for inspecting each board for colour, finish, size and other issues prior to installation.

If you have a large project, please ensure all order requirements are from the same batch number.

Cladding boards are never to be butt joined, an expansion trim must be used. All cladding boards and trims must start and stop on the centre of a batten. Failure to adhere to these points may void your warranty.

Perma Composites® will guarantee properly installed PermaTimber® Eco Cladding for 10 yrs in residential use and 7 yrs for commercial installations. Warranty information can be found at PermaTimber.com.au



Important Information

All instructions must be followed to ensure proper installation. Failure to follow all instructions may void warranty. Perma Composites® suggests using an experienced installer.

Subframe Information

If using a batten, preparation is crucial for an easy installation. Battens should be no less than 42mm x 16mm sawn treated timber.

When fixing to a frame or battens of this size, Cladding Boards, Starter Trim and Top/Window Trims require 8 gauge, 30mm pan head screws.

Internal/External and Expansion Trims require 8 gauge, 50mm pan head screws. Cladding planks have predrilled slots 450 & 600mm centres from edge of each plank.

Frame or batten spacing should be based around the best way to utilise the hole centres, as this will increase installation speed.

If hole centres miss the frame or battens appropriate holes must be drilled to allow for expansion &

contraction. Appropriate framing or battening for all trims (around doors & windows) is required.

Ensure all frame or battens are flat across the surface (using packers where appropriate).

Thanks to its special combination of recycled materials, PermaTimber® Eco Cladding will expand and contract along its length by up to 2mm per metre over a 40 degree Celsius temperature change.

Refer to temperature gapping requirements chart when joining boards or using expansion trim.

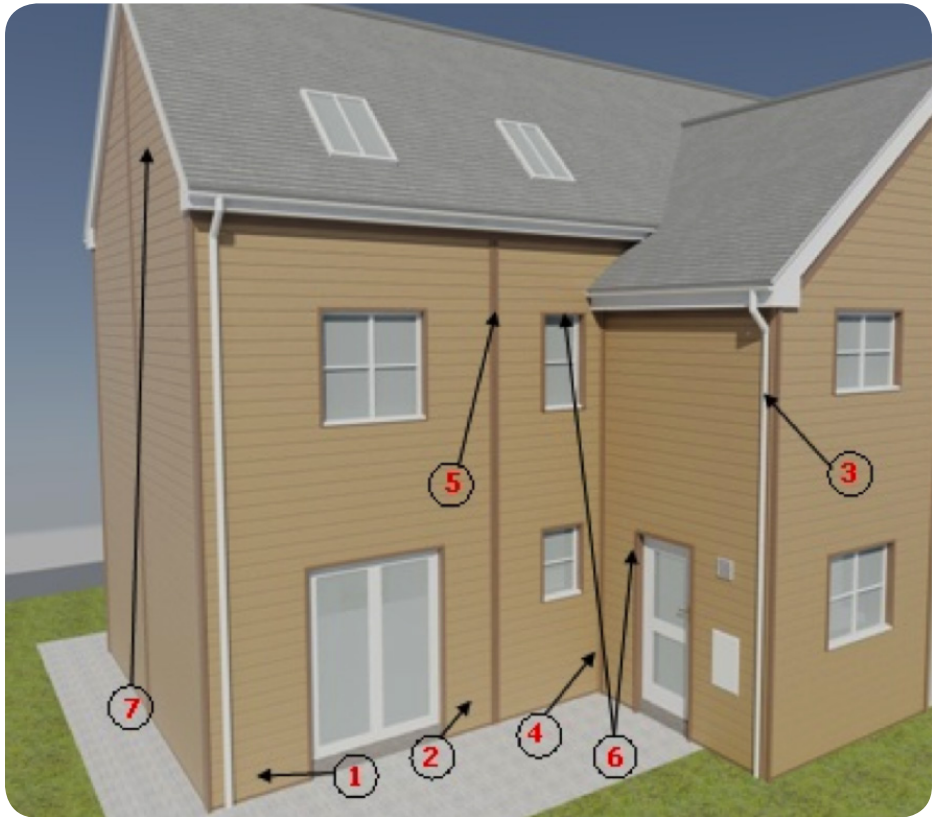
Gapping Requirements

Ambient Temp (°C)	Gap Size (mm)
45	0
40	1
35	2
30	3
25	4
20	5
15	6
10	7
5	8
0	9

NOTE – PermaTimber® Eco Cladding is NOT intended for use as columns, support posts, beams, joist stringers or other primary load-bearing members. PermaTimber® Eco Cladding must be supported by a code-compliant substructure.

While PermaTimber® Eco Cladding products are great for re-cladding (removing old cladding planks and installing PermaTimber® Eco Cladding on code-compliant substructure), PermaTimber® Eco Cladding CANNOT be installed on top of existing cladding.

Installation Guidelines



1. Starter Trim
2. First Plank
3. External Trim
4. Internal Trim
5. Expansion Trim
6. Top/Window & Door Finishing Trim

1. Starter Trim

Mark level lines on frame or battens and place starter trim in position.

Using 8g x 30mm pan head screws (when using 19mm battens), screw from the middle of starter trim in the centre of the hole.

Do not over tighten screw - use appropriate torque setting so that the starter batten isn't over tightened to restrict expansion & contraction. Torque settings are present on most combi drills drivers, please refer to your drill drive hand guide to establish how to use correctly - note each drill drivers settings are slightly different if your using more than one on site. A simple test should be carried out to establish which setting is best suitable. Do not over tighten.

Ensure starter trim is firmly in position laying flat across batten faces. Repeat process around building.



2. First Plank

Place plank in correct position on the starter plank, ensuring the hole centres line up with frame or battens (drill appropriate holes if required). As per the starter trim, use 8g x 30mm pan head screws.

Screw first plank using the same method as for the starter trim, working from the centre out.

Do not over tighten screw - use appropriate torque setting so that the starter batten isn't over tightened to restrict expansion & contraction.

Ensure cladding plank is secure.

Repeat the process, checking the levels as you progress plank by plank (slight adjustment may be required).



3. External Trim

Place External Trim into position & mark on the frame or battens to see where the cladding planks will finish.

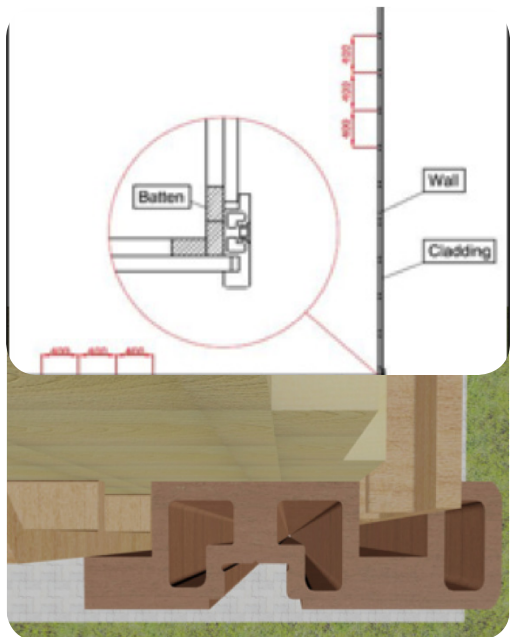
Cladding should sit half way in-between the recesses provided, ensuring suitable gaps for expansion & contraction

It is possible to install external trim after the cladding is installed as long as sufficient gaps have been allowed.

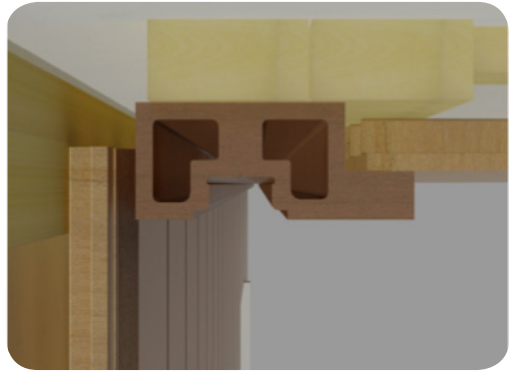
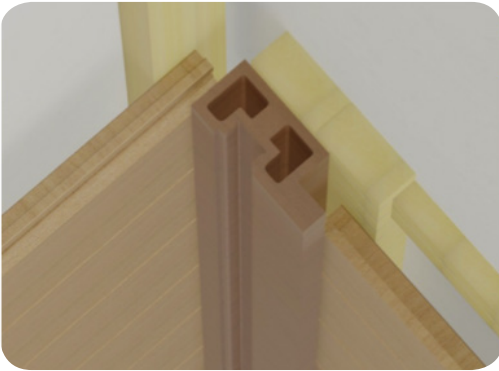
Installing the external trim:

1. Remove insert
2. Place trim in place
3. Fix into position ensuring it is plumb.

External Trims require 8g x 50mm pan head screws. Replace insert to cover up fixings.



4. Internal Trim



Place Internal trim in position & mark on frame or battens to see where the cladding planks will finish.

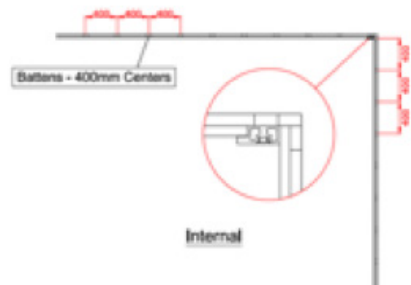
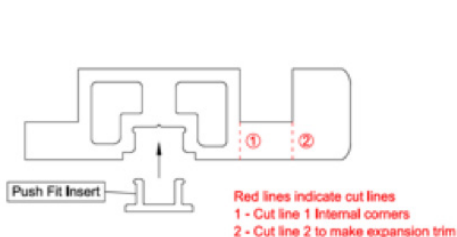
Cladding should sit half way in-between the recesses provided ensuring suitable gaps for expansion & contraction.

It is possible to install internal trim after cladding is installed as long as sufficient gaps have been left.

Installing the external trim:

1. Remove insert
2. Place trim in place
3. Fix into position ensuring it is plumb.

Internal Trims require 8g x 50mm pan head screws.



5. Expansion Trim

Place Expansion trim in position & mark on frame or battens to see where the cladding planks will finish.

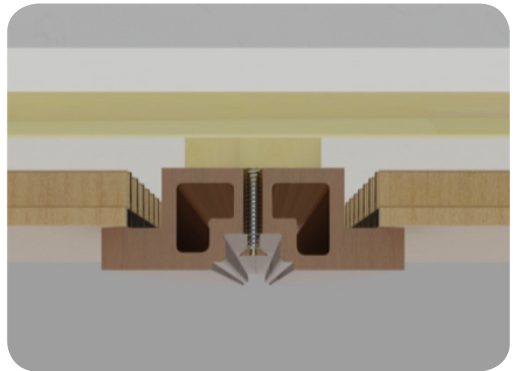
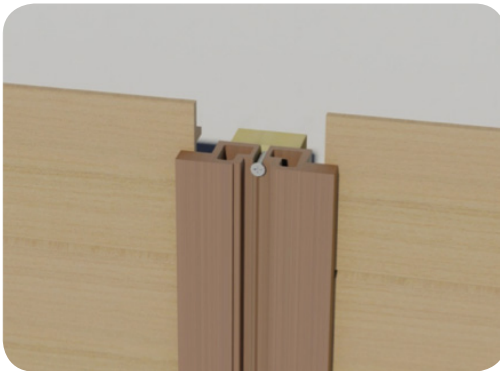
Cladding should sit half way in-between the recesses provided ensuring suitable gaps for expansion & contraction.

It possible to install expansion trim after cladding is installed as long as sufficient gaps have been left.

Installing the external trim:

1. Remove insert
2. Place trim in place
3. Fix into position ensuring it is plum.

Expansion Trims require 8g x 50mm pan head screws. Replace insert to cover up fixings.

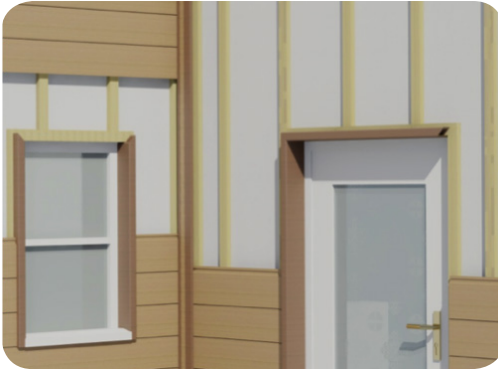


6. Top/Window Trim

Top/Window finishing trim can be cut down depending on the recess of the window or door frame to suit. Place trim in position mark & cut where appropriate. (Mitring or butt joining is acceptable).

Mark frame or batten centres, drill an over sized hole for plug in and fill on appropriate face. Fix trim though second surface (concealing screw head in box section). Mark frame or batten centres on trim profile with pencil to establish drilling positions.

Drill over sized hole 12mm in first face (for a plug). Use 8g, 30mm pan head screws to fix.



Fix trim though second surface (concealing screw head in box section).

Plugs can be used, see image to right.





PermaTimber® Eco Cladding in all profiles can be installed horizontally. Both Original and WideBoard profiles can be installed in vertical applications.

To install Permatimber Eco Cladding vertically, follow these instructions 1 through 5, the use of battens will most likely be required to suit maximum 600 spacing of fixings.

Top/Window & Door Finishing Trim instructions remain the same.

*Fixing screws must be pan head type (not countersunk head type).

Due to its special combination of recycled timber & recycled plastics, Permatimber will expand and contract with changes in outside temperatures.

Failure to abide by installation instructions may void the product warranty. Colours shown are representative only, due to the printing process.

Colour samples are available on request. Other colours available on request.

Due to our policy of continued improvement, we reserve the right to amend specifications and prices at all times.

The full suite:

Cladding

Screening

Decking



www.permatimber.com.au