

2105 SE 7TH AVENUE

Portland, OR 97214



For More Information, Contact:

Rod Brokenshire

503.972.7281

rod@macadamforbes.com

Licensed in OR

1800 SW First Avenue, Suite 650 | Portland, OR 97201
MACADAMFORBES.COM | 503.227.2500

All of the information contained herein was obtained either from the owner or other parties we consider reliable. We have no reason to doubt its accuracy, however we do not guarantee it.

FOR LEASE



FOR LEASE

2105 SE 7th Avenue, Portland, OR 97214



PROPERTY DESCRIPTION

Located in Portland's Central Eastside, this creative office space is light and bright featuring clear spans, glass overhead doors and abundant use of reclaimed woods and repurposed materials. Space includes two private offices, two conference rooms and two recording studios with an isolation booth for vocals.

PROPERTY HIGHLIGHTS

- Outdoor patio
- 5,000 SF of off-street parking
- Three grade level doors
- 14' to 16' clear height
- HVAC throughout space
- Shower

OFFERING SUMMARY

Lease Rate:	\$21.00 SF/yr (NNN)
Available SF:	7,282 SF
If Combined with 2121 SE 7th:	11,961 SF
Building Size:	17,167 SF
Main Level:	6,579 SF
Mezzanine:	703 SF



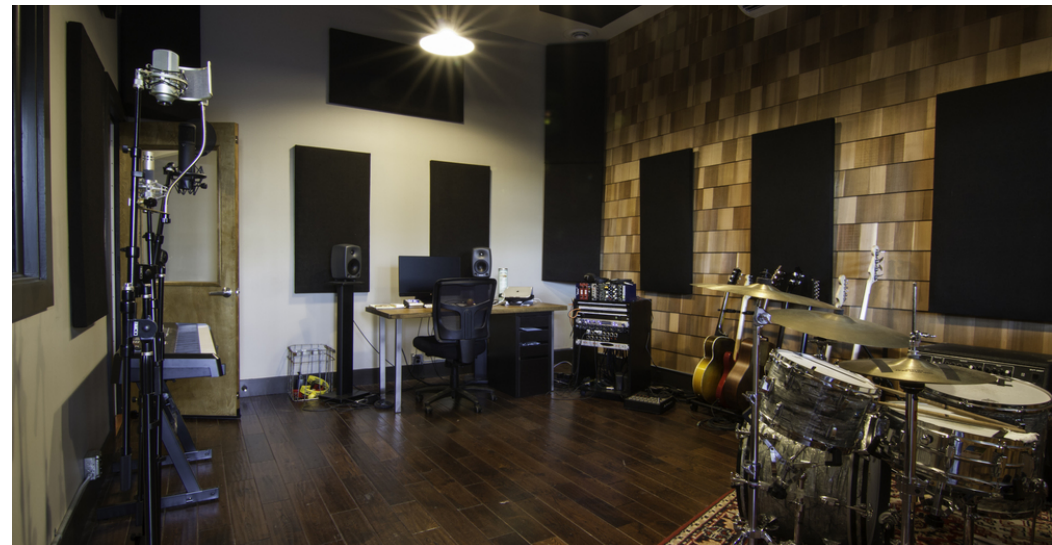
Rod Brokenshire
503.972.7281
rod@macadamforbes.com
Licensed in OR

All of the information contained herein was obtained either from the owner or other parties we consider reliable. We have no reason to doubt its accuracy, however we do not guarantee it.

MACADAMFORBES.COM | 503.227.2500

2105 SE 7th Avenue, Portland, OR 97214

FOR LEASE



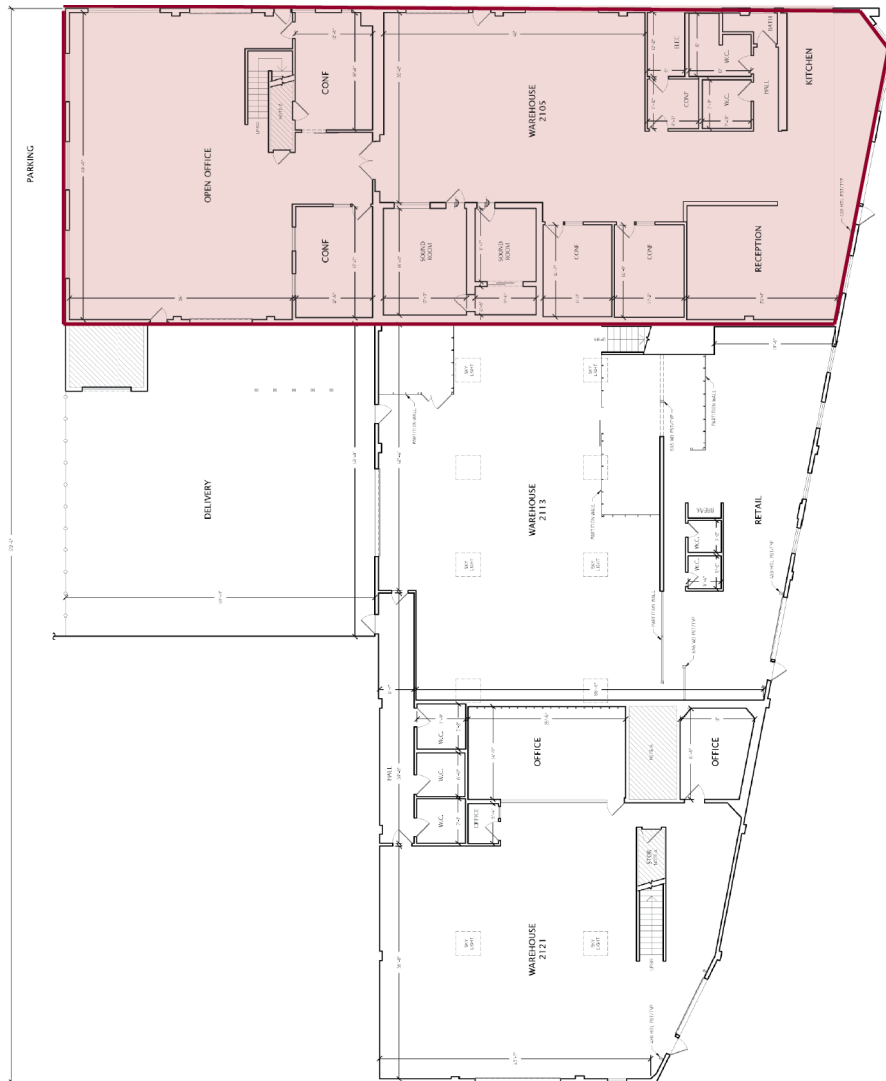
Rod Brokenshire
503.972.7281
rod@macadamforbes.com
Licensed in OR

All of the information contained herein was obtained either from the owner or other parties we consider reliable. We have no reason to doubt its accuracy, however we do not guarantee it.

MACADAMFORBES.COM | 503.227.2500

FOR LEASE

2105 SE 7th Avenue, Portland, OR 97214



Rod Brokenshire
503.972.7281
rod@macadamforbes.com
Licensed in OR

All of the information contained herein was obtained either from the owner or other parties we consider reliable. We have no reason to doubt its accuracy, however we do not guarantee it.

MACADAMFORBES.COM | 503.227.2500

2105 SE 7th Avenue, Portland, OR 97214

FOR LEASE



Map data ©2020 Google Imagery ©2020 , CNES / Airbus, Maxar Technologies, Metro, Portland Oregon, State of Oregon, U.S. Geological Survey, USDA Farm Service Agency



Rod Brokenshire
503.972.7281
rod@macadamforbes.com
Licensed in OR

All of the information contained herein was obtained either from the owner or other parties we consider reliable. We have no reason to doubt its accuracy, however we do not guarantee it.

MACADAMFORBES.COM | 503.227.2500