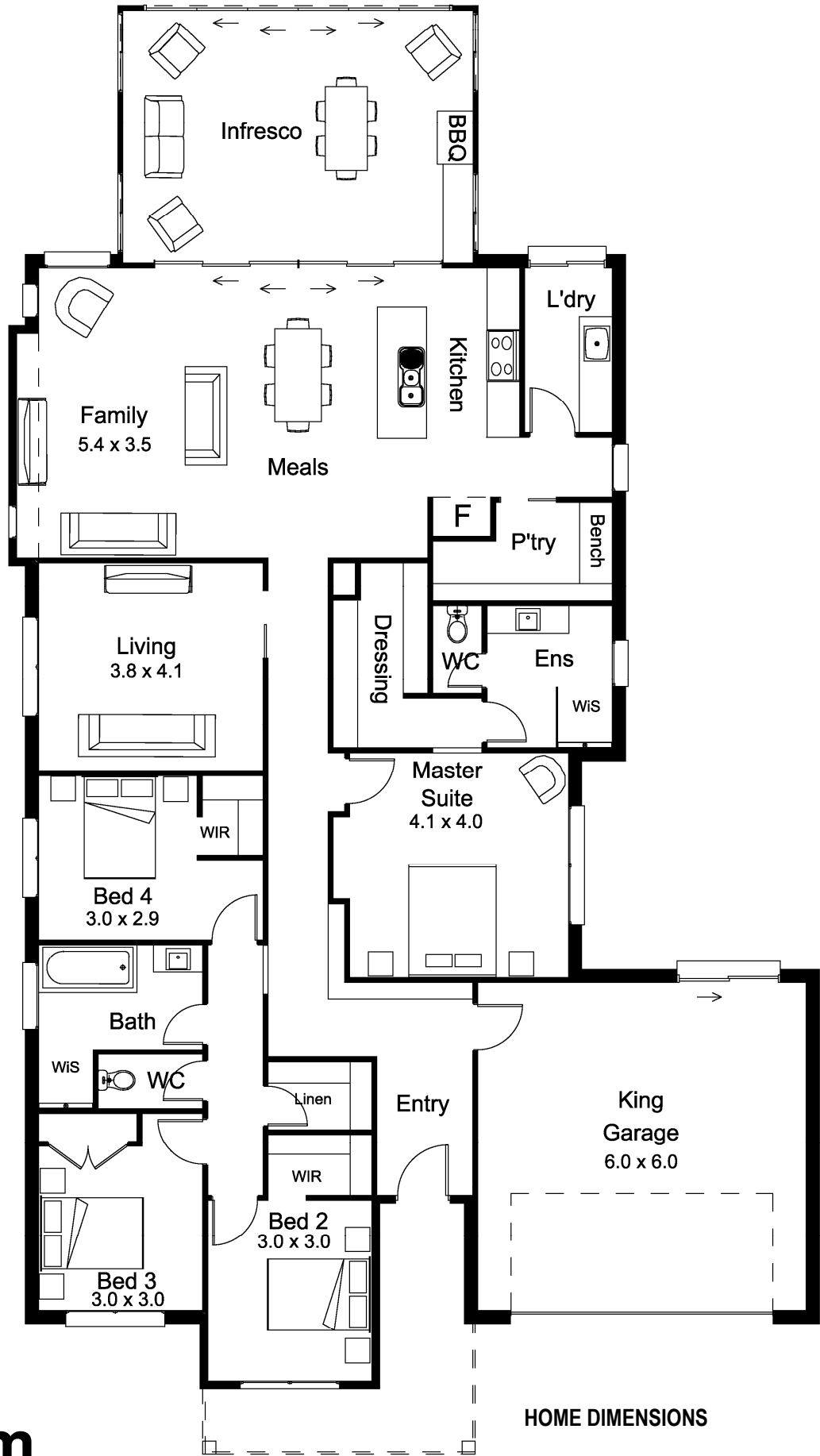


DISPLAY - HAMPTON 236



17.2m

Min. Block Width*

HOME DIMENSIONS

Living Area	195.5 m ²	21.04 Squares
Garage Area	40.5 m ²	4.36 Squares
Infresco Area	30.0 m ²	3.22 Squares
TOTAL AREA	266.0 m²	28.63 Squares

House Length 25.3m

House Width 14.8m

FOREVERHOMES

(03) 55 232 526 | foreverhomes.com.au

Hampton 236



The **Hampton 236** is Forever Homes latest Display Home. The Hampton has been designed and Built to present our design concepts and showcase the standard of craftsmanship which goes into all our new homes.

Step Inside this elegant home and find space for the whole family. The large open plan Kitchen with exposed truss ceiling forms the center piece of the homes leading to an In fresco area which allows for Indoor/outdoor living throughout the whole year. A Master bedroom with en-suite and Dressing room While 2 of the 3 additional bedrooms feature Walk In Robes.

ABOUT FOREVER HOMES

- ◆ Over 25 Years experience in building
- ◆ Locally owned award winning builder
- ◆ Member of a National Buying group
- ◆ Member of the Master Builders Association
- ◆ HIA Fixed price building contract
- ◆ HIA Indemnity Insurance
- ◆ Free site inspection
- ◆ No Obligation Estimates

SERVICES

- ◆ Custom Design House Plans
- ◆ House & Land Packages
- ◆ Preparation of Planning Applications
- ◆ Planning Reports
- ◆ Bushfire Management Statements
- ◆ Heritage Impact Statements
- ◆ Site Appraisals
- ◆ Planning Advice

